

Converting Colors

Decimal(15453386)

Have a look what the booklet for
Decimal(15453386) contains.

Decimal(15453386)	3
<i>Conversions</i>	4
<i>Details</i>	6
<i>Harmonies</i>	11
<i>Previews</i>	23
<i>Color Blindness Simulation</i>	26
<i>CSS Examples</i>	29

Color

Decimal(15453386)

Conversions

Conversions Part 1

Format	Color
Hex	EBCCCA
RGB	235, 204, 202
RGB Percent	92%, 80%, 79%
CMY	0.0784, 0.2000, 0.2078
CMYK	0.00, 0.13, 0.14, 0.08
HSL	4°, 45%, 86%
HSV	4°, 14%, 92%
XYZ	66.5145, 65.1122, 64.9393
YIQ	213.0410, 19.1180, 5.9500

Conversions

Conversions Part 2

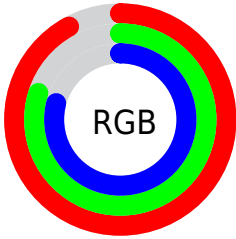
Format	Color
R _Y B	235, 204, 202
Decimal	15453386
CIE Lab	84.54, 10.54, 5.00
CIE LCh	85, 11.667, 25.363
Yxy	65.1122, 0.3384, 0.3312
Android (android.graphics.Color)	4293643466 (0xFFEBCCCA)
YUV	213.0410, -5.4432, 19.2580
Hunter-Lab	80.6921, 5.9263, 8.7691

Details

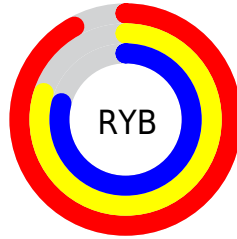
The Decimal color **15453386** is a light color, and the websafe version is hex **FFCCCC**. A complement of this color would be **13298155**, and the grayscale version is **14013909**.

A 20% lighter version of the original color is **16777215**, and **11769492** is the 20% darker color. If you saturate the color by 10%, you get **15447731**, and if you desaturate by 10%, it is **15459042**.

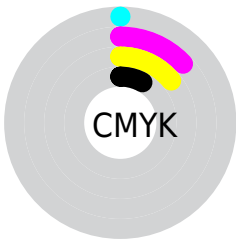
Distribution



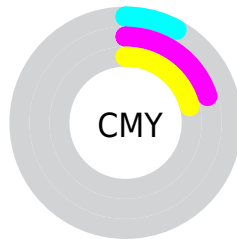
- Red (92%)
- Green (80%)
- Blue (79%)



- Red (92%)
- Yellow (80%)
- Blue (79%)



- Cyan (0%)
- Magenta (13%)
- Yellow (14%)
- Black (8%)



- Cyan (8%)
- Magenta (20%)
- Yellow (21%)

Brightness & Saturation Gradients

These gradients show how the Decimal color 15453386 changes by changing the brightness by 10 percent. The first figure shows a shift by +10% for each color and the second figure -10%.

Similar to the brightness gradients but the following saturation gradients show a change of the Decimal color 15453386 by changing the saturation by 10% instead.

15453386

15453386

16777215

13611439

11769492

9993338

8282977

6638410

4994099

3481374

2164741

0

 15453386

 15453386

 15447731

 15459042

 15442075

 15464697

 15436420

 15466495

 15430764

 15425109

 15419453

 15413541

 15407886

 15404544

Harmonies

Analogous

The Analogous color harmony consists of three colors that are next to each other on the color wheel.



15322325



15453386



15191745

Triad

The Triadic color harmony groups three colors that are evenly spaced from another and form a triangle on the color wheel.



15453386



12966086



13030633

Complementary

The Complementary color scheme is a pair of colors which are on the opposite of each other on the color wheel.



15453386



13298155

Split Complementary

Split-complementary colors differ from the complementary color scheme. The scheme consists of three colors, the original color and two neighbors of the complement color.



12310757



15453386



12311249

Square

The Square scheme is like the rectangle color scheme, but the four colors are evenly spaced on the color wheel.



15453386



13817279



12114396



13881831

Rectangle

The Rectangle color scheme consists of four colors that form a rectangle on the color wheel.



15453386



14864574



12114396



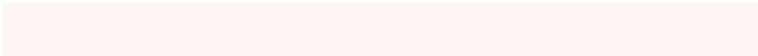
12769000

Sweetspot

The Sweet Spot groups the original color and five complimentary colors.



15453386



16774645



15452905



8419961



0



8421504

Same Dimension

The Same Dimension uses a secret algorithm to generate beautiful new colors.



15453386



16766676



15457482



7694954



11864832



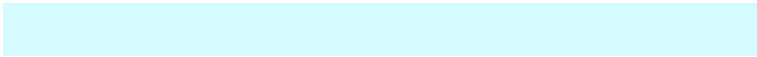
3539712

Inverse Universe

The Inverse Universe completely reimagines the original color for something new.



13298155



13958399



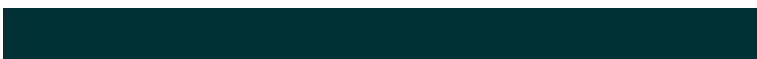
13294059



6976885



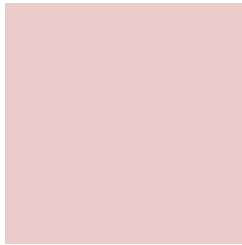
43701



12854

Previews

White Background



This preview shows how the Decimal color 15453386 looks on a white background.

Color Contrast Check

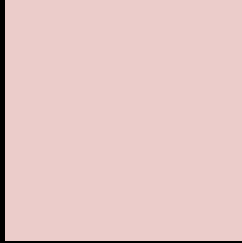
Large Text (above 18pt) WCAG AA × Fail

Any Text WCAG AA × Fail

Large Text (above 18pt) WCAG AAA × Fail

Any Text WCAG AAA × Fail

Black Background



This preview shows how the Decimal color 15453386 looks on a black background.

Color Contrast Check

Large Text (above 18pt) WCAG AA ✓ Pass

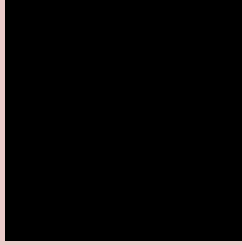
Any Text WCAG AA ✓ Pass

Large Text (above 18pt) WCAG AAA ✓ Pass

Any Text WCAG AAA ✓ Pass

If you want to check with other color combinations, try the [Color Contrast Checker](#).

Decimal 15453386 Background



This preview shows how black text looks on a background with the Decimal color 15453386.




This preview shows how white text looks on a background with the Decimal color 15453386.

Color Blindness Simulation

Color vision deficiency is a very complex topic, and I could not describe the different causes any better than Wikipedia does, so if you want to learn more, you should check out their [article about color blindness](#).

Dichromacy





Tritanopia
15583961

Trichromacy



Original Color
15453386

Protanomaly
14667980

Deuteranomaly
15453386

Tritanomaly
15518676

Monochromacy



Original Color
15453386

Achromatopsia
14013909

Achromatomaly
14537425

CSS Examples

Text

The CSS property to change the color of the text to Decimal 15453386 is called "color". The color property can be set on classes, ids or directly on the HTML element.

This example shows how text in the color #EBCCCA looks like.

```
.text, #text, p{  
  color:#EBCCCA  
}
```

If you want to add a text shadow in that color use the text-shadow property, you can generate a text shadow directly with our [CSS Text Shadow Generator](#).

Here you see how black text with a 4 pixel #EBCCCA colored shadow looks like.

```
.shadow{ text-shadow: 4px 4px 2px #EBCCCA
}
```

Border

The CSS property to change the border of an element to Decimal 15453386 is called "border". The border property can be set on classes, ids or directly on the HTML element.

This example shows the color as border, it can be applied via the CSS property "border" or "border-color".

```
.border, #border, table{ border:4px solid
#EBCCCA }
```

If only the border color should be changed use the property `border-color`.

```
.border{ border-color:#EBCCCA }
```

If you want to add a box shadow in that color use:

Here you see how a box with a 4 pixel #EBCCCA colored shadow looks like.

```
.boxshadow{ -moz-box-shadow:4px 4px 4px  
4px #EBCCCA; -webkit-box-shadow:4px 4px  
4px 4px #EBCCCA; box-shadow:4px 4px 4px  
4px #EBCCCA }
```

Background

The CSS property to change the background color of an element to Decimal 15453386 is called "background". The background property can be set on classes, ids or directly on the HTML element.

```
.background, #background, body{  
background:#EBCCCA }
```

If only the background color should be changed can be used:

```
.background{ background-color:#EBCCCA }
```

This example shows the color as background, it is applied via the CSS property "background".

To optimize and compress your CSS code, you can use our [online CSS compressor and optimizer](#) based on csstidy. If you want to create a linear or radial gradient as background or border, check our [CSS Gradient Generator](#).

Hey! You found this booklet interesting? Support Converting Colors with the new Membership Option!

The pro membership hides all ads, plus gives you double the colors in the color bucket, and more awesome pro features!

[Learn more, Memberships starting at \\$2.50/m!](#)

**Follow me
on Twitter!**

@ConvertingColor