

Converting Colors

Decimal(15453885)

Have a look what the booklet for
Decimal(15453885) contains.

| | |
|--|----|
| Decimal(15453885) | 3 |
| <i>Conversions</i> | 4 |
| <i>Details</i> | 6 |
| <i>Harmonies</i> | 11 |
| <i>Previews</i> | 23 |
| <i>Color Blindness Simulation</i> | 26 |
| <i>CSS Examples</i> | 29 |

Color

Decimal(15453885)

Conversions

Conversions Part 1

| Format | Color |
|-------------|---------------------------|
| Hex | EBCEBD |
| RGB | 235, 206, 189 |
| RGB Percent | 92%, 81%, 74% |
| CMY | 0.0784, 0.1922, 0.2588 |
| CMYK | 0.00, 0.12, 0.20, 0.08 |
| HSL | 22°, 53%, 83% |
| HSV | 22°, 20%, 92% |
| XYZ | 65.5176, 65.4789, 57.3297 |
| YIQ | 212.7330, 22.7410, 0.8610 |

Conversions

Conversions Part 2

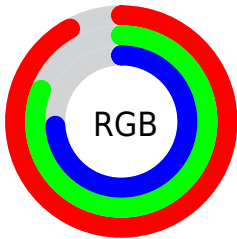
| Format | Color |
|-------------------------------------|--------------------------------|
| R _Y B | 235, 216, 189 |
| Decimal | 15453885 |
| CIE Lab | 84.73, 7.50, 12.17 |
| CIE LCh | 85, 14.299, 58.358 |
| Yxy | 65.4789, 0.3479, 0.3477 |
| Android (android.graphics.Color) | 4293643965 (0xFFEBCEBD) |
| YUV | 212.7330, -11.7004, 19.5282 |
| Hunter-Lab | 80.9190, 2.9174, 14.6374 |

Details

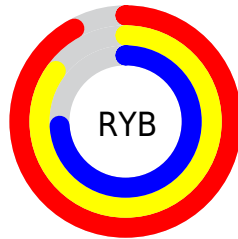
The Decimal color **15453885** is a light color, and the websafe version is hex **FFCCCC**. A complement of this color would be **12442347**, and the grayscale version is **14013909**.

A 20% lighter version of the original color is **16777205**, and **11769992** is the 20% darker color. If you saturate the color by 10%, you get **15450022**, and if you desaturate by 10%, it is **15457748**.

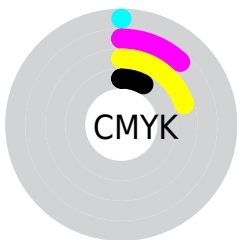
Distribution



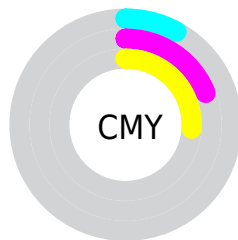
- Red (92%)
- Green (81%)
- Blue (74%)



- Red (92%)
- Yellow (85%)
- Blue (74%)



- Cyan (0%)
- Magenta (12%)
- Yellow (20%)
- Black (8%)



- Cyan (8%)
- Magenta (19%)
- Yellow (26%)

Brightness & Saturation Gradients

These gradients show how the Decimal color 15453885 changes by changing the brightness by 10 percent. The first figure shows a shift by +10% for each color and the second figure -10%.

Similar to the brightness gradients but the following saturation gradients show a change of the Decimal color 15453885 by changing the saturation by 10% instead.

| | |
|--|---|
|  15453885 |  15453885 |
| 16777215 |  13611938 |
|  16777205 |  11769992 |
| |  9993838 |
| |  8217942 |
| |  6573375 |
| |  4994601 |
| |  3416340 |
| |  2034432 |
| |  0 |

 15453885

 15453885

 15450022

 15457748

 15446158

 15461612

 15442551

 15465215

 15438687

 15466495

 15434824

 15430960

 15427097

 15423233

 15423232

Harmonies

Analogous

The Analogous color harmony consists of three colors that are next to each other on the color wheel.



15780807



15453885



14668473

Triad

The Triadic color harmony groups three colors that are evenly spaced from another and form a triangle on the color wheel.



15453885



11918546



14012651

Complementary

The Complementary color scheme is a pair of colors which are on the opposite of each other on the color wheel.



15453885



12442347

Split Complementary

Split-complementary colors differ from the complementary color scheme. The scheme consists of three colors, the original color and two neighbors of the complement color.



12899822



15453885



11656160

Square

The Square scheme is like the rectangle color scheme, but the four colors are evenly spaced on the color wheel.



15453885



12704453



12048874



15060194

Rectangle

The Rectangle color scheme consists of four colors that form a rectangle on the color wheel.



15453885



14079418



12048874



13685485

Sweetspot

The Sweet Spot groups the original color and five complimentary colors.



15453885



16774640



15449562



8419959



0



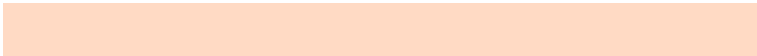
8421504

Same Dimension

The Same Dimension uses a secret algorithm to generate beautiful new colors.



15453885



16767684



15459773



7695978



11879168



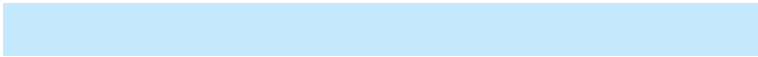
3544064

Inverse Universe

The Inverse Universe completely reimagines the original color for something new.



12442347



12904959



12436459



6975861



29365



8758

Previews

White Background



This preview shows how the Decimal color 15453885 looks on a white background.

Color Contrast Check

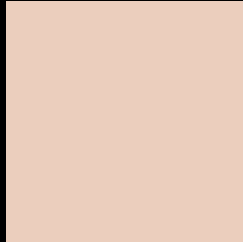
Large Text (above 18pt) WCAG AA × Fail

Any Text WCAG AA × Fail

Large Text (above 18pt) WCAG AAA × Fail

Any Text WCAG AAA × Fail

Black Background



This preview shows how the Decimal color 15453885 looks on a black background.

Color Contrast Check

Large Text (above 18pt) WCAG AA ✓ Pass

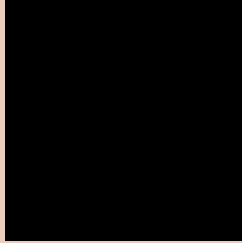
Any Text WCAG AA ✓ Pass

Large Text (above 18pt) WCAG AAA ✓ Pass

Any Text WCAG AAA ✓ Pass

If you want to check with other color combinations, try the [Color Contrast Checker](#).

Decimal 15453885 Background



This preview shows how black text looks on a background with the Decimal color 15453885.



This preview shows how white text looks on a background with the Decimal color 15453885.

Color Blindness Simulation

Color vision deficiency is a very complex topic, and I could not describe the different causes any better than Wikipedia does, so if you want to learn more, you should check out their [article about color blindness](#).

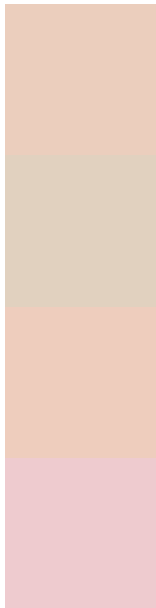
Dichromacy





Tritanopia
15715034

Trichromacy



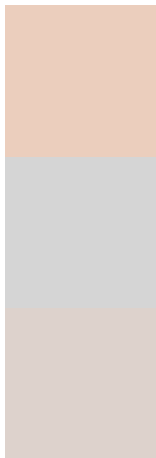
Original Color
15453885

Protanomaly
14799295

Deuteranomaly
15650237

Tritanomaly
15649743

Monochromacy



Original Color
15453885

Achromatopsia
14013909

Achromatomaly
14537420

CSS Examples

Text

The CSS property to change the color of the text to Decimal 15453885 is called "color". The color property can be set on classes, ids or directly on the HTML element.

This example shows how text in the color #EBCEBD looks like.

```
.text, #text, p{  
  color:#EBCEBD  
}
```

If you want to add a text shadow in that color use the text-shadow property, you can generate a text shadow directly with our [CSS Text Shadow Generator](#).

Here you see how black text with a 4 pixel #EBCEBD colored shadow looks like.

```
.shadow{ text-shadow: 4px 4px 2px #EBCEBD
}
```

Border

The CSS property to change the border of an element to Decimal 15453885 is called "border". The border property can be set on classes, ids or directly on the HTML element.

This example shows the color as border, it can be applied via the CSS property "border" or "border-color".

```
.border, #border, table{ border:4px solid
#EBCEBD }
```

If only the border color should be changed use the property `border-color`.

```
.border{ border-color:#EBCEBD }
```

If you want to add a box shadow in that color use:

Here you see how a box with a 4 pixel #EBCEBD colored shadow looks like.

```
.boxshadow{ -moz-box-shadow:4px 4px 4px  
4px #EBCEBD; -webkit-box-shadow:4px 4px  
4px 4px #EBCEBD; box-shadow:4px 4px 4px  
4px #EBCEBD }
```

Background

The CSS property to change the background color of an element to Decimal 15453885 is called "background". The background property can be set on classes, ids or directly on the HTML element.

```
.background, #background, body{  
background:#EBCEBD }
```

If only the background color should be changed can be used:

```
.background{ background-color:#EBCEBD }
```

This example shows the color as background, it is applied via the CSS property "background".

To optimize and compress your CSS code, you can use our [online CSS compressor and optimizer](#) based on csstidy. If you want to create a linear or radial gradient as background or border, check our [CSS Gradient Generator](#).

Hey! You found this booklet interesting? Support Converting Colors with the new Membership Option!

The pro membership hides all ads, plus gives you double the colors in the color bucket, and more awesome pro features!

[Learn more, Memberships starting at \\$2.50/m!](#)

**Follow me
on Twitter!**

@ConvertingColor