

Converting Colors

Decimal(15455696)

Have a look what the booklet for
Decimal(15455696) contains.

Decimal(15455696)	3
<i>Conversions</i>	4
<i>Details</i>	6
<i>Harmonies</i>	11
<i>Previews</i>	23
<i>Color Blindness Simulation</i>	26
<i>CSS Examples</i>	29

Color

Decimal(15455696)

Conversions

Conversions Part 1

Format	Color
Hex	EBD5D0
RGB	235, 213, 208
RGB Percent	92%, 84%, 82%
CMY	0.0784, 0.1647, 0.1843
CMYK	0.00, 0.09, 0.11, 0.08
HSL	11°, 40%, 87%
HSV	11°, 11%, 92%
XYZ	69.4404, 69.8047, 69.4883
YIQ	219.0080, 14.7170, 3.1090

Conversions

Conversions Part 2

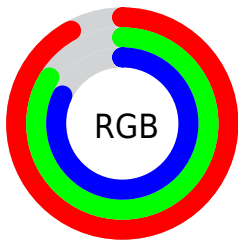
Format	Color
R _Y B	235, 214, 208
Decimal	15455696
CIE Lab	86.90, 6.79, 5.22
CIE LCh	87, 8.565, 37.577
Yxy	69.8047, 0.3327, 0.3344
Android (android.graphics.Color)	4293645776 (0xFFEBD5D0)
YUV	219.0080, -5.4269, 14.0250
Hunter-Lab	83.5492, 2.1458, 9.1727

Details

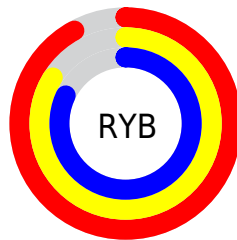
The Decimal color **15455696** is a light color, and the websafe version is hex **CCCCCC**. A complement of this color would be **13690603**, and the grayscale version is **14408667**.

A 20% lighter version of the original color is **16777215**, and **11771546** is the 20% darker color. If you saturate the color by 10%, you get **15450809**, and if you desaturate by 10%, it is **15460584**.

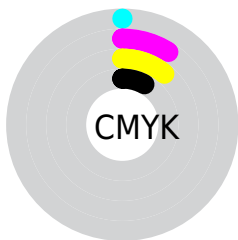
Distribution



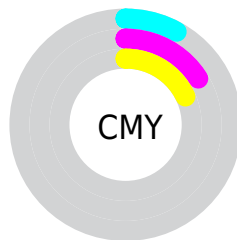
- Red (92%)
- Green (84%)
- Blue (82%)



- Red (92%)
- Yellow (84%)
- Blue (82%)



- Cyan (0%)
- Magenta (9%)
- Yellow (11%)
- Black (8%)



- Cyan (8%)
- Magenta (16%)
- Yellow (18%)

Brightness & Saturation Gradients

These gradients show how the Decimal color 15455696 changes by changing the brightness by 10 percent. The first figure shows a shift by +10% for each color and the second figure -10%.

Similar to the brightness gradients but the following saturation gradients show a change of the Decimal color 15455696 by changing the saturation by 10% instead.

15455696

15455696

16777215

13613492

11771546

9995392

8285031

6640463

5061688

3548706

2167309

0

 15455696

 15455696

 15450809

 15460584

 15445921

 15465471

 15441034

 15466495

 15435890

 15431003

 15426115

 15421228

 15416340

 15412224

Harmonies

Analogous

The Analogous color harmony consists of three colors that are next to each other on the color wheel.



15455448



15455696



15128523

Triad

The Triadic color harmony groups three colors that are evenly spaced from another and form a triangle on the color wheel.



15455696



13426387



13949674

Complementary

The Complementary color scheme is a pair of colors which are on the opposite of each other on the color wheel.



15455696



13690603

Split Complementary

Split-complementary colors differ from the complementary color scheme. The scheme consists of three colors, the original color and two neighbors of the complement color.



13360360



15455696



13098971

Square

The Square scheme is like the rectangle color scheme, but the four colors are evenly spaced on the color wheel.



15455696



14015693



13033187



14604262

Rectangle

The Rectangle color scheme consists of four colors that form a rectangle on the color wheel.



15455696



14801353



13033187



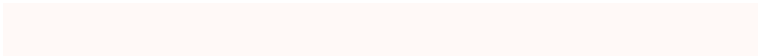
13753066

Sweetspot

The Sweet Spot groups the original color and five complimentary colors.



15455696



16775671



15454438



8420218



0



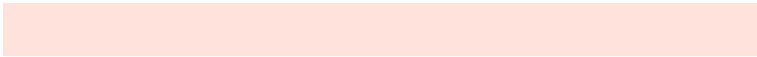
8421504

Same Dimension

The Same Dimension uses a secret algorithm to generate beautiful new colors.



15455696



16769755



15459024



7695466



11870720



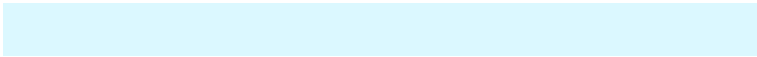
3541504

Inverse Universe

The Inverse Universe completely reimagines the original color for something new.



13690603



14416127



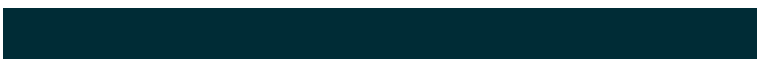
13687275



6976373



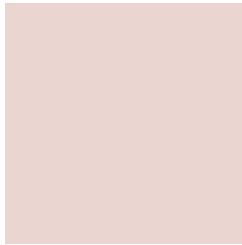
38069



11318

Previews

White Background



This preview shows how the Decimal color 15455696 looks on a white background.

Color Contrast Check

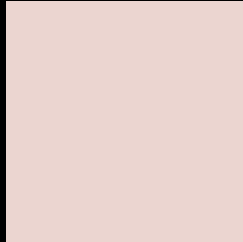
Large Text (above 18pt) WCAG AA × Fail

Any Text WCAG AA × Fail

Large Text (above 18pt) WCAG AAA × Fail

Any Text WCAG AAA × Fail

Black Background



This preview shows how the Decimal color 15455696 looks on a black background.

Color Contrast Check

Large Text (above 18pt) WCAG AA ✓ Pass

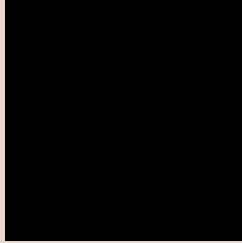
Any Text WCAG AA ✓ Pass

Large Text (above 18pt) WCAG AAA ✓ Pass

Any Text WCAG AAA ✓ Pass

If you want to check with other color combinations, try the [Color Contrast Checker](#).

Decimal 15455696 Background



This preview shows how black text looks on a background with the Decimal color 15455696.

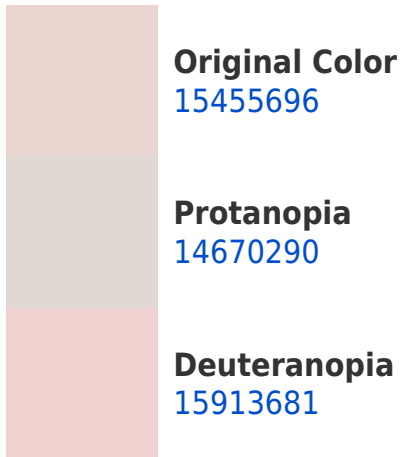



This preview shows how white text looks on a background with the Decimal color 15455696.

Color Blindness Simulation

Color vision deficiency is a very complex topic, and I could not describe the different causes any better than Wikipedia does, so if you want to learn more, you should check out their [article about color blindness](#).

Dichromacy





Tritanopia
15651555

Trichromacy



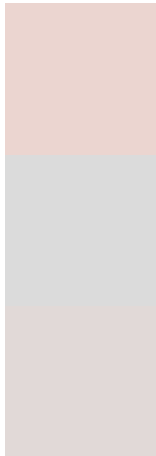
Original Color
15455696

Protanomaly
14932177

Deuteranomaly
15717329

Tritanomaly
15586268

Monochromacy



Original Color
15455696

Achromatopsia
14408667

Achromatomaly
14801367

CSS Examples

Text

The CSS property to change the color of the text to Decimal 15455696 is called "color". The color property can be set on classes, ids or directly on the HTML element.

This example shows how text in the color #EBD5D0 looks like.

```
.text, #text, p{  
    color:#EBD5D0  
}
```

If you want to add a text shadow in that color use the text-shadow property, you can generate a text shadow directly with our [CSS Text Shadow Generator](#).

Here you see how black text with a 4 pixel #EBD5D0 colored shadow looks like.

```
.shadow{ text-shadow: 4px 4px 2px #EBD5D0
}
```

Border

The CSS property to change the border of an element to Decimal 15455696 is called "border". The border property can be set on classes, ids or directly on the HTML element.

This example shows the color as border, it can be applied via the CSS property "border" or "border-color".

```
.border, #border, table{ border:4px solid
#EBD5D0 }
```

If only the border color should be changed use the property `border-color`.

```
.border{ border-color:#EBD5D0 }
```

If you want to add a box shadow in that color use:

Here you see how a box with a 4 pixel #EBD5D0 colored shadow looks like.

```
.boxshadow{ -moz-box-shadow:4px 4px 4px  
4px #EBD5D0; -webkit-box-shadow:4px 4px  
4px 4px #EBD5D0; box-shadow:4px 4px 4px  
4px #EBD5D0 }
```

Background

The CSS property to change the background color of an element to Decimal 15455696 is called "background". The background property can be set on classes, ids or directly on the HTML element.

```
.background, #background, body{  
background:#EBD5D0 }
```

If only the background color should be changed can be used:

```
.background{ background-color:#EBD5D0 }
```

This example shows the color as background, it is applied via the CSS property "background".

To optimize and compress your CSS code, you can use our [online CSS compressor and optimizer](#) based on csstidy. If you want to create a linear or radial gradient as background or border, check our [CSS Gradient Generator](#).

Hey! You found this booklet interesting? Support Converting Colors with the new Membership Option!

The pro membership hides all ads, plus gives you double the colors in the color bucket, and more awesome pro features!

[Learn more, Memberships starting at \\$2.50/m!](#)

**Follow me
on Twitter!**

@ConvertingColor