

Converting Colors

Decimal(15476853)

Have a look what the booklet for
Decimal(15476853) contains.

Decimal(15476853)	3
<i>Conversions</i>	4
<i>Details</i>	6
<i>Harmonies</i>	11
<i>Previews</i>	23
<i>Color Blindness Simulation</i>	26
<i>CSS Examples</i>	29

Color

Decimal(15476853)

Conversions

Conversions Part 1

Format	Color
Hex	EC2875
RGB	236, 40, 117
RGB Percent	93%, 16%, 46%
CMY	0.0745, 0.8431, 0.5412
CMYK	0.00, 0.83, 0.50, 0.07
HSL	336°, 84%, 54%
HSV	336°, 83%, 93%
XYZ	38.5617, 20.6348, 18.7801
YIQ	107.3820, 92.0990, 65.4990

Conversions

Conversions Part 2

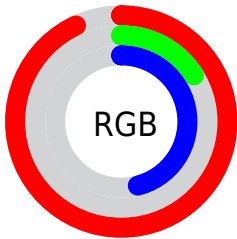
Format	Color
R_{YB}	236, 40, 117
Decimal	15476853
CIE _{Lab}	52.55, 74.69, 6.86
CIE _{LCh}	53, 74.999, 5.245
Yxy	20.6348, 0.4945, 0.2646
Android (android.graphics.Color)	4293666933 (0xFFEC2875)
YUV	107.3820, 4.7417, 112.7980
Hunter-Lab	45.4255, 72.0339, 7.2859

Details

The Decimal color **15476853** is a dark color, and the websafe version is hex **CC0066**. The color can be described as dark washed rose. A complement of this color would be **2682015**, and the grayscale version is **7039851**.

A 20% lighter version of the original color is **16739753**, and **11403333** is the 20% darker color. If you saturate the color by 10%, you get **15470695**, and if you desaturate by 10%, it is **15483011**.

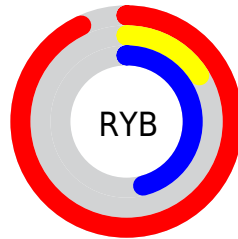
Distribution



Red (93%)

Green (16%)

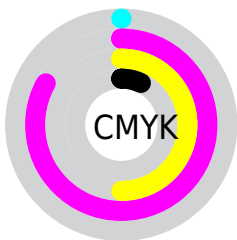
Blue (46%)



Red (93%)

Yellow (16%)

Blue (46%)

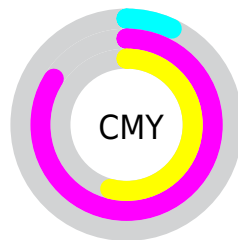


Cyan (0%)

Magenta (83%)

Yellow (50%)

Black (7%)



Cyan (7%)

Magenta (84%)

Yellow (54%)

Brightness & Saturation Gradients

These gradients show how the Decimal color 15476853 changes by changing the brightness by 10 percent. The first figure shows a shift by +10% for each color and the second figure -10%.

Similar to the brightness gradients but the following saturation gradients show a change of the Decimal color 15476853 by changing the saturation by 10% instead.

 15476853

 15476853

16777215

 13434973

 16739753

 11403333

 16747460

 9371695

 16754912

 7340059

 16762620

 5439491

 16770303

 3407874

 0

 15476853

 15476853

 15470695

 15483011

■ 15466589

■ 15488914

■ 15495072

■ 15500974

■ 15507133

■ 15513291

■ 15519193

■ 15525352

■ 15531254

Harmonies

Analogous

The Analogous color harmony consists of three colors that are next to each other on the color wheel.



13713589



15476853



14959159

Triad

The Triadic color harmony groups three colors that are evenly spaced from another and form a triangle on the color wheel.



15476853



4754944



37619

Complementary

The Complementary color scheme is a pair of colors which are on the opposite of each other on the color wheel.



15476853



2682015

Split Complementary

Split-complementary colors differ from the complementary color scheme. The scheme consists of three colors, the original color and two neighbors of the complement color.



39111



15476853



38467

Square

The Square scheme is like the rectangle color scheme, but the four colors are evenly spaced on the color wheel.



15476853



9338368



39303



33535

Rectangle

The Rectangle color scheme consists of four colors that form a rectangle on the color wheel.



15476853



13588993



39303



38375

Sweetspot

The Sweet Spot groups the original color and five complimentary colors.



15476853



16760792



10365164



8411496



0



8421504

Same Dimension

The Same Dimension uses a secret algorithm to generate beautiful new colors.



15476853



16711780



15481896



7694958



11862087



3538965

Inverse Universe

The Inverse Universe completely reimagines the original color for something new.



15476853



16711780



2676972



7694958



11862087



3538965

Previews

White Background



This preview shows how the Decimal color 15476853 looks on a white background.

Color Contrast Check

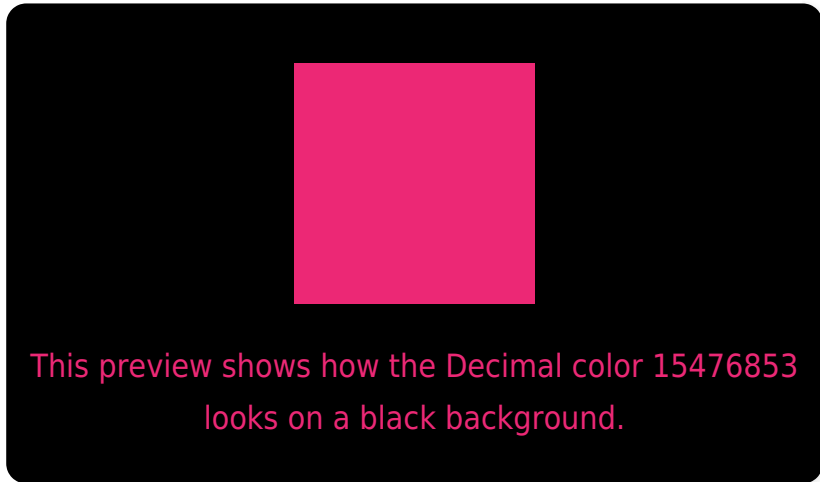
Large Text (above 18pt) WCAG AA ✓ Pass

Any Text WCAG AA × Fail

Large Text (above 18pt) WCAG AAA × Fail

Any Text WCAG AAA × Fail

Black Background



Color Contrast Check

Large Text (above 18pt) WCAG AA ✓ Pass

Any Text WCAG AA ✓ Pass

Large Text (above 18pt) WCAG AAA ✓ Pass

Any Text WCAG AAA × Fail

If you want to check with other color combinations, try the [Color Contrast Checker](#).

Decimal 15476853 Background



This preview shows how black text looks on a background with the Decimal color 15476853.



This preview shows how white text looks on a background with the Decimal color 15476853.

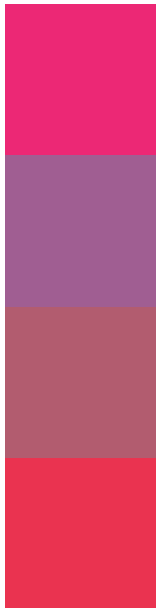
Color Blindness Simulation

Color vision deficiency is a very complex topic, and I could not describe the different causes any better than Wikipedia does, so if you want to learn more, you should check out their [article about color blindness](#).

Dichromacy



Trichromacy



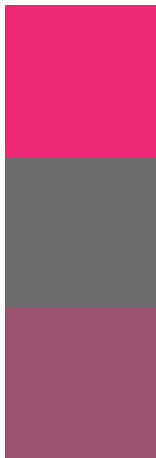
Original Color
15476853

Protanomaly
10509970

Deuteranomaly
11689071

Tritanomaly
15348560

Monochromacy



Original Color
15476853

Achromatopsia
7039851

Achromatomaly
10113903

CSS Examples

Text

The CSS property to change the color of the text to Decimal 15476853 is called "color". The color property can be set on classes, ids or directly on the HTML element.

This example shows how text in the color #EC2875 looks like.

```
.text, #text, p{  
  color:#EC2875  
}
```

If you want to add a text shadow in that color use the text-shadow property, you can generate a text shadow directly with our [CSS Text Shadow Generator](#).

Here you see how black text with a 4 pixel #EC2875 colored shadow looks like.

```
.shadow{ text-shadow: 4px 4px 2px #EC2875
}
```

Border

The CSS property to change the border of an element to Decimal 15476853 is called "border". The border property can be set on classes, ids or directly on the HTML element.

This example shows the color as border, it can be applied via the CSS property "border" or "border-color".

```
.border, #border, table{ border:4px solid
#EC2875 }
```

If only the border color should be changed use the property `border-color`.

```
.border{ border-color:#EC2875 }
```

If you want to add a box shadow in that color use:

Here you see how a box with a 4 pixel #EC2875 colored shadow looks like.

```
.boxshadow{ -moz-box-shadow:4px 4px 4px  
4px #EC2875; -webkit-box-shadow:4px 4px  
4px 4px #EC2875; box-shadow:4px 4px 4px  
4px #EC2875 }
```

Background

The CSS property to change the background color of an element to Decimal 15476853 is called "background". The background property can be set on classes, ids or directly on the HTML element.

```
.background, #background, body{  
background:#EC2875 }
```

If only the background color should be changed can be used:

```
.background{ background-color:#EC2875 }
```

This example shows the color as background, it is applied via the CSS property "background".

To optimize and compress your CSS code, you can use our [online CSS compressor and optimizer](#) based on csstidy. If you want to create a linear or radial gradient as background or border, check our [CSS Gradient Generator](#).

Hey! You found this booklet interesting? Support Converting Colors with the new Membership Option!

The pro membership hides all ads, plus gives you double the colors in the color bucket, and more awesome pro features!

[Learn more, Memberships starting at \\$2.50/m!](#)

**Follow me
on Twitter!**

@ConvertingColor