

# Converting Colors

Decimal(15481721)

Have a look what the booklet for  
Decimal(15481721) contains.

<b>Decimal(15481721)</b> .....	3
<i><b>Conversions</b></i> .....	4
<i><b>Details</b></i> .....	6
<i><b>Harmonies</b></i> .....	11
<i><b>Previews</b></i> .....	23
<i><b>Color Blindness Simulation</b></i> .....	26
<i><b>CSS Examples</b></i> .....	29

# Color

**Decimal(15481721)**

# Conversions

## Conversions Part 1

<b>Format</b>	<b>Color</b>
Hex	EC3B79
RGB	236, 59, 121
RGB Percent	93%, 23%, 47%
CMY	0.0745, 0.7686, 0.5255
CMYK	0.00, 0.75, 0.49, 0.07
HSL	339°, 82%, 58%
HSV	339°, 75%, 93%
XYZ	39.6072, 22.3413, 20.3139
YIQ	118.9910, 85.5900, 56.8060

# Conversions

## Conversions Part 2

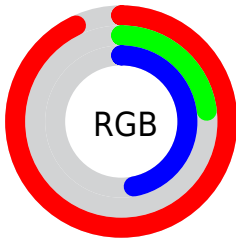
<b>Format</b>	<b>Color</b>
<b>R<sub>YB</sub></b>	236, 59, 121
Decimal	15481721
CIE <sub>Lab</sub>	54.39, 70.07, 7.08
CIE <sub>LCh</sub>	54, 70.427, 5.767
Yxy	22.3413, 0.4815, 0.2716
Android (android.graphics.Color)	4293671801 (0xFFEC3B79)
YUV	118.9910, 0.9904, 102.6169
Hunter-Lab	47.2666, 66.8584, 7.6053

# Details

The Decimal color **15481721** is a dark color, and the websafe version is hex **CC3366**. The color can be described as middle washed rose. A complement of this color would be **3927214**, and the grayscale version is **7829367**.

A 20% lighter version of the original color is **16742829**, and **11403337** is the 20% darker color. If you saturate the color by 10%, you get **15475562**, and if you desaturate by 10%, it is **15487880**.

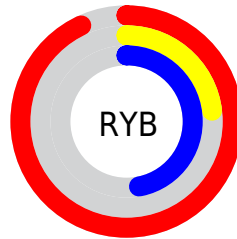
# Distribution



Red (93%)

Green (23%)

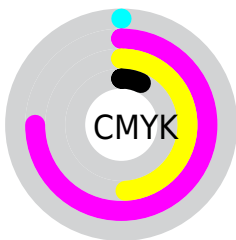
Blue (47%)



Red (93%)

Yellow (23%)

Blue (47%)

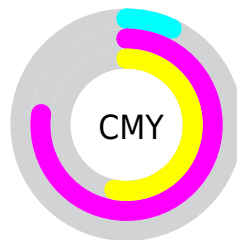


Cyan (0%)

Magenta (75%)

Yellow (49%)

Black (7%)



Cyan (7%)

Magenta (77%)

Yellow (53%)

# Brightness & Saturation Gradients

These gradients show how the Decimal color 15481721 changes by changing the brightness by 10 percent. The first figure shows a shift by +10% for each color and the second figure -10%.

Similar to the brightness gradients but the following saturation gradients show a change of the Decimal color 15481721 by changing the saturation by 10% instead.



 15481721

 15481721

16777215

 13438304

 16742829

 11403337

 16750280

 9437235

 16757732

 7405598

 16765439

 5505027

 16773119

 3538946

 458752

 0

 15481721

 15481721

■ 15475562

■ 15487880

■ 15469658

■ 15493784

■ 15466579

■ 15499943

■ 15505846

■ 15512006

■ 15518165

■ 15524068

■ 15530228

■ 15532031

# Harmonies

## Analogous

The Analogous color harmony consists of three colors that are next to each other on the color wheel.



13847733



15481721



14962238

# Triad

The Triadic color harmony groups three colors that are evenly spaced from another and form a triangle on the color wheel.



15481721



5345792



38641

# Complementary

The Complementary color scheme is a pair of colors which are on the opposite of each other on the color wheel.



15481721



3927214

# Split Complementary

Split-complementary colors differ from the complementary color scheme. The scheme consists of three colors, the original color and two neighbors of the complement color.



40136



15481721



39501

# Square

The Square scheme is like the rectangle color scheme, but the four colors are evenly spaced on the color wheel.



15481721



9601792



40333



34556

# Rectangle

The Rectangle color scheme consists of four colors that form a rectangle on the color wheel.



15481721



13656597



40333



39399



# Sweetspot

The Sweet Spot groups the original color and five complimentary colors.



15481721



16762073



11221996



8412264



0



8421504



# Same Dimension

The Same Dimension uses a secret algorithm to generate beautiful new colors.



15481721



16718186



15487803



7694958



11862079



3538963



# Inverse Universe

The Inverse Universe completely reimagines the original color for something new.



15481721



16718186



3921132



7694958



11862079



3538963



# Previews

## White Background



This preview shows how the Decimal color 15481721 looks on a white background.

## Color Contrast Check

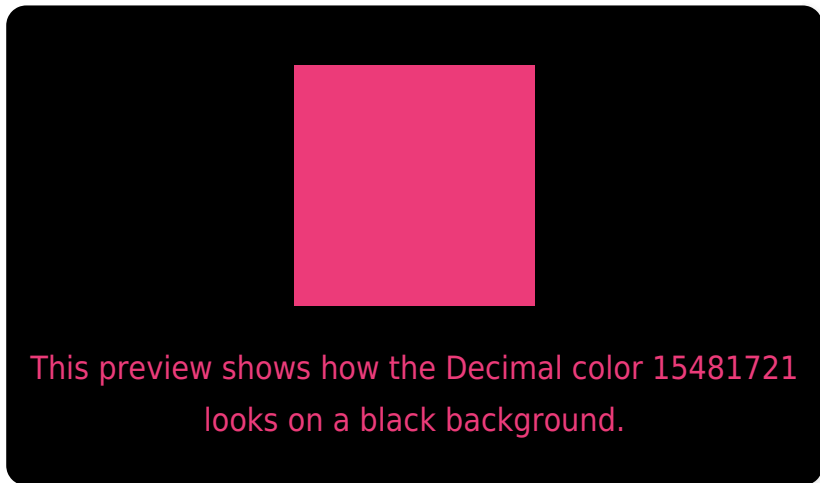
Large Text (above 18pt) WCAG AA ✓ Pass

Any Text WCAG AA × Fail

Large Text (above 18pt) WCAG AAA × Fail

Any Text WCAG AAA × Fail

# Black Background



## Color Contrast Check

Large Text (above 18pt) WCAG AA ✓ Pass

Any Text WCAG AA ✓ Pass

Large Text (above 18pt) WCAG AAA ✓ Pass

Any Text WCAG AAA × Fail

If you want to check with other color combinations, try the [Color Contrast Checker](#).



## Decimal 15481721 Background



This preview shows how black text looks on a background with the Decimal color 15481721.



This preview shows how white text looks on a background with the Decimal color 15481721.

# Color Blindness Simulation

Color vision deficiency is a very complex topic, and I could not describe the different causes any better than Wikipedia does, so if you want to learn more, you should check out their [article about color blindness](#).

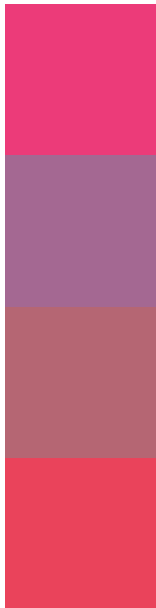
## Dichromacy





**Tritanopia**  
15288138

# Trichromacy



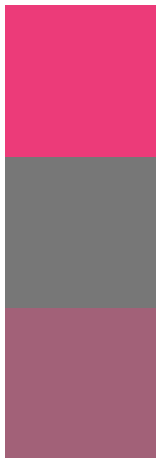
**Original Color**  
15481721

**Protanomaly**  
10774674

**Deuteranomaly**  
11888243

**Tritanomaly**  
15352667

# Monochromacy



**Original Color**  
15481721

**Achromatopsia**  
7829367

**Achromatomaly**  
10641784

# CSS Examples

## Text

The CSS property to change the color of the text to Decimal 15481721 is called "color". The color property can be set on classes, ids or directly on the HTML element.

This example shows how text in the color #EC3B79 looks like.

```
.text, #text, p{  
  color:#EC3B79  
}
```

If you want to add a text shadow in that color use the text-shadow property, you can generate a text shadow directly with our [CSS Text Shadow Generator](#).

Here you see how black text with a 4 pixel #EC3B79 colored shadow looks like.

```
.shadow{ text-shadow: 4px 4px 2px #EC3B79
}
```

## Border

The CSS property to change the border of an element to Decimal 15481721 is called "border". The border property can be set on classes, ids or directly on the HTML element.

This example shows the color as border, it can be applied via the CSS property "border" or "border-color".

```
.border, #border, table{ border:4px solid
#EC3B79 }
```

If only the border color should be changed use the property `border-color`.

```
.border{ border-color:#EC3B79 }
```

If you want to add a box shadow in that color use:

Here you see how a box with a 4 pixel #EC3B79 colored shadow looks like.

```
.boxshadow{ -moz-box-shadow:4px 4px 4px  
4px #EC3B79; -webkit-box-shadow:4px 4px  
4px 4px #EC3B79; box-shadow:4px 4px 4px  
4px #EC3B79 }
```

# Background

The CSS property to change the background color of an element to Decimal 15481721 is called "background". The background property can be set on classes, ids or directly on the HTML element.

```
.background, #background, body{  
background:#EC3B79 }
```

If only the background color should be changed can be used:

```
.background{ background-color:#EC3B79 }
```

This example shows the color as background, it is applied via the CSS property "background".

To optimize and compress your CSS code, you can use our [online CSS compressor and optimizer](#) based on csstidy. If you want to create a linear or radial gradient as background or border, check our [CSS Gradient Generator](#).



Hey! You found this booklet interesting? Support Converting Colors with the new Membership Option!

The pro membership hides all ads, plus gives you double the colors in the color bucket, and more awesome pro features!

**[Learn more, Memberships starting at \\$2.50/m!](#)**

**Follow me  
on Twitter!**

@ConvertingColor