

Converting Colors

Decimal(15489918)

Have a look what the booklet for
Decimal(15489918) contains.

Decimal(15489918)	3
<i>Conversions</i>	4
<i>Details</i>	6
<i>Harmonies</i>	11
<i>Previews</i>	23
<i>Color Blindness Simulation</i>	26
<i>CSS Examples</i>	29

Color

Decimal(15489918)

Conversions

Conversions Part 1

Format	Color
Hex	EC5B7E
RGB	236, 91, 126
RGB Percent	93%, 36%, 49%
CMY	0.0745, 0.6431, 0.5059
CMYK	0.00, 0.61, 0.47, 0.07
HSL	346°, 79%, 64%
HSV	346°, 61%, 93%
XYZ	42.0991, 26.8214, 22.6968
YIQ	138.3450, 75.1850, 41.6250

Conversions

Conversions Part 2

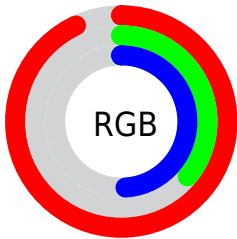
Format	Color
R_{YB}	236, 91, 126
Decimal	15489918
CIE _{Lab}	58.81, 58.69, 10.39
CIE _{LCh}	59, 59.600, 10.044
Yxy	26.8214, 0.4595, 0.2928
Android (android.graphics.Color)	4293679998 (0xFFEC5B7E)
YUV	138.3450, -6.0861, 85.6434
Hunter-Lab	51.7894, 54.4694, 10.2685

Details

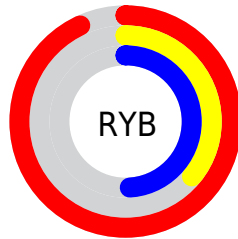
The Decimal color **15489918** is a dark color, and the websafe version is hex **FF6699**. The color can be described as middle muted rose. A complement of this color would be **6024393**, and the grayscale version is **9079434**.

A 20% lighter version of the original color is **16749490**, and **11476301** is the 20% darker color. If you saturate the color by 10%, you get **15483756**, and if you desaturate by 10%, it is **15496080**.

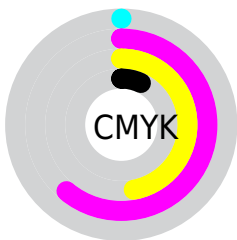
Distribution



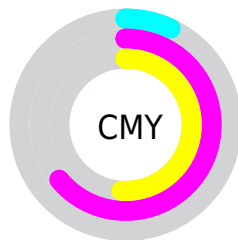
- Red (93%)
- Green (36%)
- Blue (49%)



- Red (93%)
- Yellow (36%)
- Blue (49%)



- Cyan (0%)
- Magenta (61%)
- Yellow (47%)
- Black (7%)



- Cyan (7%)
- Magenta (64%)
- Yellow (51%)

Brightness & Saturation Gradients

These gradients show how the Decimal color 15489918 changes by changing the brightness by 10 percent. The first figure shows a shift by +10% for each color and the second figure -10%.

Similar to the brightness gradients but the following saturation gradients show a change of the Decimal color 15489918 by changing the saturation by 10% instead.

 15489918

 15489918

16777215

 13450853

 16749490

 11476301

 16756942

 9502775

 16764138

 7602210

 16771839

 5701643

 3932163

 1441792

 0

 15489918

 15489918

 15483756

 15496080

 15477850

 15501986

 15471688

 15508148

 15466553

 15514054

 15520216

 15526377

 15532027

 15532031

Harmonies

Analogous

The Analogous color harmony consists of three colors that are next to each other on the color wheel.



14312114



15489918



14903629

Triad

The Triadic color harmony groups three colors that are evenly spaced from another and form a triangle on the color wheel.



15489918



6266167



40432

Complementary

The Complementary color scheme is a pair of colors which are on the opposite of each other on the color wheel.



15489918



6024393

Split Complementary

Split-complementary colors differ from the complementary color scheme. The scheme consists of three colors, the original color and two neighbors of the complement color.



42192



15489918



42088

Square

The Square scheme is like the rectangle color scheme, but the four colors are evenly spaced on the color wheel.



15489918



9998614



42654



4099829

Rectangle

The Rectangle color scheme consists of four colors that form a rectangle on the color wheel.



15489918



13662001



42654



41192

Sweetspot

The Sweet Spot groups the original color and five complimentary colors.



15489918



16765404



13130732



8414058



0



8421504

Same Dimension

The Same Dimension uses a secret algorithm to generate beautiful new colors.



15489918



16728688



15499099



7694956



11862060



3538957

Inverse Universe

The Inverse Universe completely reimagines the original color for something new.



15489918



16728688



6015212



7694956



11862060



3538957

Previews

White Background



This preview shows how the Decimal color 15489918 looks on a white background.

Color Contrast Check

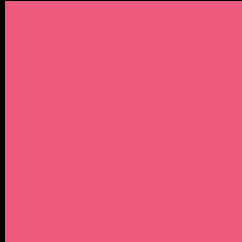
Large Text (above 18pt) WCAG AA ✓ Pass

Any Text WCAG AA × Fail

Large Text (above 18pt) WCAG AAA × Fail

Any Text WCAG AAA × Fail

Black Background



This preview shows how the Decimal color 15489918 looks on a black background.

Color Contrast Check

Large Text (above 18pt) WCAG AA ✓ Pass

Any Text WCAG AA ✓ Pass

Large Text (above 18pt) WCAG AAA ✓ Pass

Any Text WCAG AAA × Fail

If you want to check with other color combinations, try the [Color Contrast Checker](#).

Decimal 15489918 Background



This preview shows how black text looks on a background with the Decimal color 15489918.



This preview shows how white text looks on a background with the Decimal color 15489918.

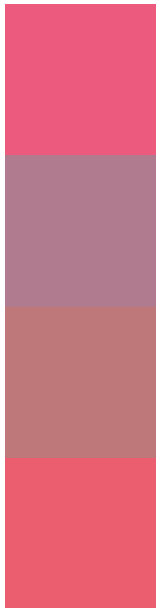
Color Blindness Simulation

Color vision deficiency is a very complex topic, and I could not describe the different causes any better than Wikipedia does, so if you want to learn more, you should check out their [article about color blindness](#).

Dichromacy



Trichromacy



Original Color
15489918

Protanomaly
11565967

Deuteranomaly
12482682

Tritanomaly
15425135

Monochromacy



Original Color
15489918

Achromatopsia
9079434

Achromatomaly
11434374

CSS Examples

Text

The CSS property to change the color of the text to Decimal 15489918 is called "color". The color property can be set on classes, ids or directly on the HTML element.

This example shows how text in the color #EC5B7E looks like.

```
.text, #text, p{  
  color:#EC5B7E  
}
```

If you want to add a text shadow in that color use the text-shadow property, you can generate a text shadow directly with our [CSS Text Shadow Generator](#).

Here you see how black text with a 4 pixel #EC5B7E colored shadow looks like.

```
.shadow{ text-shadow: 4px 4px 2px #EC5B7E
}
```

Border

The CSS property to change the border of an element to Decimal 15489918 is called "border". The border property can be set on classes, ids or directly on the HTML element.

This example shows the color as border, it can be applied via the CSS property "border" or "border-color".

```
.border, #border, table{ border:4px solid
#EC5B7E }
```

If only the border color should be changed use the property `border-color`.

```
.border{ border-color:#EC5B7E }
```

If you want to add a box shadow in that color use:

Here you see how a box with a 4 pixel #EC5B7E colored shadow looks like.

```
.boxshadow{ -moz-box-shadow:4px 4px 4px  
4px #EC5B7E; -webkit-box-shadow:4px 4px  
4px 4px #EC5B7E; box-shadow:4px 4px 4px  
4px #EC5B7E }
```

Background

The CSS property to change the background color of an element to Decimal 15489918 is called "background". The background property can be set on classes, ids or directly on the HTML element.

```
.background, #background, body{  
background:#EC5B7E }
```

If only the background color should be changed can be used:

```
.background{ background-color:#EC5B7E }
```

This example shows the color as background, it is applied via the CSS property "background".

To optimize and compress your CSS code, you can use our [online CSS compressor and optimizer](#) based on csstidy. If you want to create a linear or radial gradient as background or border, check our [CSS Gradient Generator](#).

Hey! You found this booklet interesting? Support Converting Colors with the new Membership Option!

The pro membership hides all ads, plus gives you double the colors in the color bucket, and more awesome pro features!

[Learn more, Memberships starting at \\$2.50/m!](#)

**Follow me
on Twitter!**

@ConvertingColor