

Converting Colors

Decimal(15497613)

Have a look what the booklet for
Decimal(15497613) contains.

Decimal(15497613)	3
<i>Conversions</i>	4
<i>Details</i>	6
<i>Harmonies</i>	11
<i>Previews</i>	23
<i>Color Blindness Simulation</i>	26
<i>CSS Examples</i>	29

Color

Decimal(15497613)

Conversions

Conversions Part 1

Format	Color
Hex	EC798D
RGB	236, 121, 141
RGB Percent	93%, 47%, 55%
CMY	0.0745, 0.5255, 0.4471
CMYK	0.00, 0.49, 0.40, 0.07
HSL	350°, 75%, 70%
HSV	350°, 49%, 93%
XYZ	46.2372, 33.4307, 29.2151
YIQ	157.6650, 62.1200, 30.6000

Conversions

Conversions Part 2

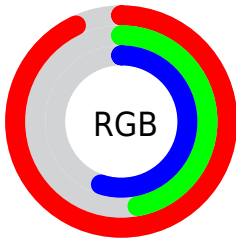
Format	Color
RYB	236, 121, 141
Decimal	15497613
CIELab	64.51, 46.22, 9.81
CIElCh	65, 47.249, 11.984
Yxy	33.4307, 0.4247, 0.3070
Android (android.graphics.Color)	4293687693 (0xFFEC798D)
YUV	157.6650, -8.2158, 68.6998
Hunter-Lab	57.8193, 41.5599, 10.5153

Details

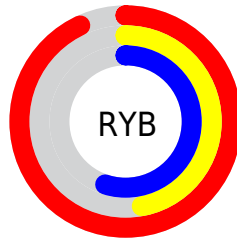
The Decimal color **15497613** is a light color, and the websafe version is hex **FF9999**. A complement of this color would be **7990488**, and the grayscale version is **10395294**.

A 20% lighter version of the original color is **16756930**, and **11617371** is the 20% darker color. If you saturate the color by 10%, you get **15491450**, and if you desaturate by 10%, it is **15503776**.

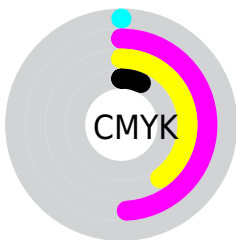
Distribution



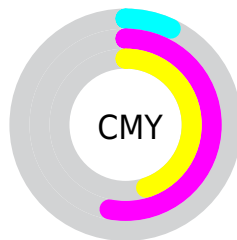
- Red (93%)
- Green (47%)
- Blue (55%)



- Red (93%)
- Yellow (47%)
- Blue (55%)



- Cyan (0%)
- Magenta (49%)
- Yellow (40%)
- Black (7%)



- Cyan (7%)
- Magenta (53%)
- Yellow (45%)

Brightness & Saturation Gradients

These gradients show how the Decimal color 15497613 changes by changing the brightness by 10 percent. The first figure shows a shift by +10% for each color and the second figure -10%.

Similar to the brightness gradients but the following saturation gradients show a change of the Decimal color 15497613 by changing the saturation by 10% instead.

 15497613

 15497613

16777215

 13524596

 16756930

 11617371

 16764126

 9709892

 16771579

 7800366

 5963801

 4259840

 2359297

 0

 15497613

 15497613

■ 15491450

■ 15503776

■ 15485542

■ 15509684

■ 15479379

■ 15515847

■ 15473471

■ 15521755

■ 15467308

■ 15527918

■ 15466537

■ 15532031

Harmonies

Analogous

The Analogous color harmony consists of three colors that are next to each other on the color wheel.



14515640



15497613



14975590

Triad

The Triadic color harmony groups three colors that are evenly spaced from another and form a triangle on the color wheel.



15497613



7842395



43244

Complementary

The Complementary color scheme is a pair of colors which are on the opposite of each other on the color wheel.



15497613



7990488

Split Complementary

Split-complementary colors differ from the complementary color scheme. The scheme consists of three colors, the original color and two neighbors of the complement color.



45268



15497613



3518593

Square

The Square scheme is like the rectangle color scheme, but the four colors are evenly spaced on the color wheel.



15497613



10854215



45741



7642095

Rectangle

The Rectangle color scheme consists of four colors that form a rectangle on the color wheel.



15497613



13995090



45741



44006

Sweetspot

The Sweet Spot groups the original color and five complimentary colors.



15497613



16767455



14121452



8415597



0



8421504

Same Dimension

The Same Dimension uses a secret algorithm to generate beautiful new colors.



15497613



16739205



15506809



7694956



11862047



3538953

Inverse Universe

The Inverse Universe completely reimagines the original color for something new.



15497613



16739205



7981292



7694956



11862047



3538953

Previews

White Background



This preview shows how the Decimal color 15497613 looks on a white background.

Color Contrast Check

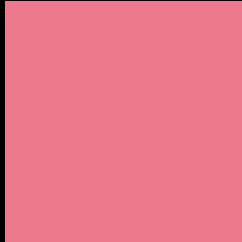
Large Text (above 18pt) WCAG AA × Fail

Any Text WCAG AA × Fail

Large Text (above 18pt) WCAG AAA × Fail

Any Text WCAG AAA × Fail

Black Background



This preview shows how the Decimal color 15497613 looks on a black background.

Color Contrast Check

Large Text (above 18pt) WCAG AA ✓ Pass

Any Text WCAG AA ✓ Pass

Large Text (above 18pt) WCAG AAA ✓ Pass

Any Text WCAG AAA ✓ Pass

If you want to check with other color combinations, try the [Color Contrast Checker](#).

Decimal 15497613 Background



This preview shows how black text looks on a background with the Decimal color 15497613.




This preview shows how white text looks on a background with the Decimal color 15497613.

Color Blindness Simulation

Color vision deficiency is a very complex topic, and I could not describe the different causes any better than Wikipedia does, so if you want to learn more, you should check out their [article about color blindness](#).

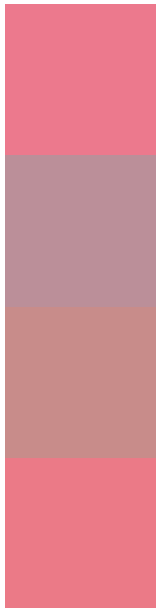
Dichromacy





Tritanopia
15432579

Trichromacy



Original Color
15497613

Protanomaly
12291993

Deuteranomaly
13143178

Tritanomaly
15432327

Monochromacy



Original Color
15497613

Achromatopsia
10395294

Achromatomaly
12226968

CSS Examples

Text

The CSS property to change the color of the text to Decimal 15497613 is called "color". The color property can be set on classes, ids or directly on the HTML element.

This example shows how text in the color #EC798D looks like.

```
.text, #text, p{  
    color:#EC798D  
}
```

If you want to add a text shadow in that color use the text-shadow property, you can generate a text shadow directly with our [CSS Text Shadow Generator](#).

Here you see how black text with a 4 pixel #EC798D colored shadow looks like.

```
.shadow{ text-shadow: 4px 4px 2px #EC798D
}
```

Border

The CSS property to change the border of an element to Decimal 15497613 is called "border". The border property can be set on classes, ids or directly on the HTML element.

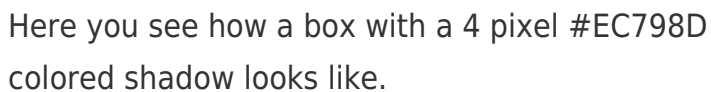
This example shows the color as border, it can be applied via the CSS property "border" or "border-color".

```
.border, #border, table{ border:4px solid
#EC798D }
```

If only the border color should be changed use the property `border-color`.

```
.border{ border-color:#EC798D }
```

If you want to add a box shadow in that color use:



Here you see how a box with a 4 pixel `#EC798D` colored shadow looks like.

```
.boxshadow{ -moz-box-shadow:4px 4px 4px  
4px #EC798D; -webkit-box-shadow:4px 4px  
4px 4px #EC798D; box-shadow:4px 4px 4px  
4px #EC798D }
```

Background

The CSS property to change the background color of an element to Decimal 15497613 is called "background". The background property can be set on classes, ids or directly on the HTML element.

```
.background, #background, body{  
background:#EC798D }
```

If only the background color should be changed can be used:

```
.background{ background-color:#EC798D }
```

This example shows the color as background, it is applied via the CSS property "background".

To optimize and compress your CSS code, you can use our [online CSS compressor and optimizer](#) based on csstidy. If you want to create a linear or radial gradient as background or border, check our [CSS Gradient Generator](#).

Hey! You found this booklet interesting? Support Converting Colors with the new Membership Option!

The pro membership hides all ads, plus gives you double the colors in the color bucket, and more awesome pro features!

[Learn more, Memberships starting at \\$2.50/m!](#)

**Follow me
on Twitter!**

@ConvertingColor