

# Converting Colors

Decimal(15501476)

Have a look what the booklet for  
Decimal(15501476) contains.

<b>Decimal(15501476)</b> .....	3
<i><b>Conversions</b></i> .....	4
<i><b>Details</b></i> .....	6
<i><b>Harmonies</b></i> .....	11
<i><b>Previews</b></i> .....	23
<i><b>Color Blindness Simulation</b></i> .....	26
<i><b>CSS Examples</b></i> .....	29

# **Color**

**Decimal(15501476)**

# Conversions

## Conversions Part 1

<b>Format</b>	<b>Color</b>
Hex	EC88A4
RGB	236, 136, 164
RGB Percent	93%, 53%, 64%
CMY	0.0745, 0.4667, 0.3569
CMYK	0.00, 0.42, 0.31, 0.07
HSL	343°, 72%, 73%
HSV	343°, 42%, 93%
XYZ	50.0971, 38.1215, 39.8397
YIQ	169.0920, 50.6120, 29.9080

# Conversions

## Conversions Part 2

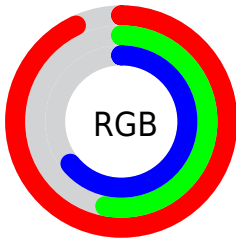
Format	Color
R <sub>Y</sub> B	236, 136, 164
Decimal	15501476
CIE Lab	68.11, 41.34, 1.97
CIE LCh	68, 41.392, 2.727
Yxy	38.1215, 0.3912, 0.2977
Android (android.graphics.Color)	4293691556 (0xFFEC88A4)
YUV	169.0920, -2.5104, 58.6783
Hunter-Lab	61.7426, 36.7827, 4.9627

# Details

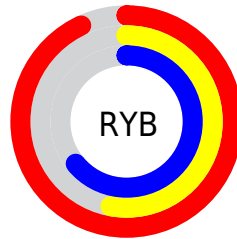
The Decimal color **15501476** is a light color, and the websafe version is hex **FF99CC**. A complement of this color would be **8973520**, and the grayscale version is **11119017**.

A 20% lighter version of the original color is **16760795**, and **11687024** is the 20% darker color. If you saturate the color by 10%, you get **15495315**, and if you desaturate by 10%, it is **15507637**.

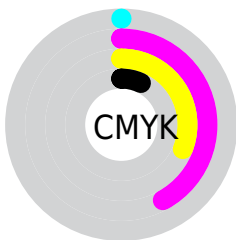
# Distribution



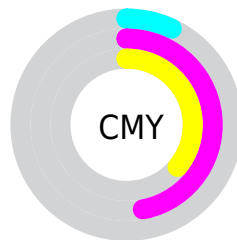
- Red (93%)
- Green (53%)
- Blue (64%)



- Red (93%)
- Yellow (53%)
- Blue (64%)



- Cyan (0%)
- Magenta (42%)
- Yellow (31%)
- Black (7%)



- Cyan (7%)
- Magenta (47%)
- Yellow (36%)

# Brightness & Saturation Gradients

These gradients show how the Decimal color 15501476 changes by changing the brightness by 10 percent. The first figure shows a shift by +10% for each color and the second figure -10%.

Similar to the brightness gradients but the following saturation gradients show a change of the Decimal color 15501476 by changing the saturation by 10% instead.



 15501476

 15501476

16777215

 13593994

 16760795

 11687024

 16767991

 9779800

 16775423

 8003393

 6160427

 4456471

 2949121

 0

 15501476

 15501476

15495315

15507637

15489410

15513542

15483249

15519703

15477344

15525608

15471183

15531769

15466562

15532031

# Harmonies

## Analogous

The Analogous color harmony consists of three colors that are next to each other on the color wheel.



14192329



15501476



15502464

# Triad

The Triadic color harmony groups three colors that are evenly spaced from another and form a triangle on the color wheel.



15501476



9678949



1160168

# Complementary

The Complementary color scheme is a pair of colors which are on the opposite of each other on the color wheel.



15501476



8973520

# Split Complementary

Split-complementary colors differ from the complementary color scheme. The scheme consists of three colors, the original color and two neighbors of the complement color.



47565



15501476



6666114

# Square

The Square scheme is like the rectangle color scheme, but the four colors are evenly spaced on the color wheel.



15501476



12232026



2210472



7514608

# Rectangle

The Rectangle color scheme consists of four colors that form a rectangle on the color wheel.



15501476



14783596



2210472



46561



# Sweetspot

The Sweet Spot groups the original color and five complimentary colors.



15501476



16768743



13666540



8416113



0



8421504



# Same Dimension

The Same Dimension uses a secret algorithm to generate beautiful new colors.



15501476



16743841



15507080



7694957



11862067



3538959



# Inverse Universe

The Inverse Universe completely reimagines the original color for something new.



15501476



16743841



8967916



7694957



11862067



3538959



# Previews

## White Background



This preview shows how the Decimal color 15501476 looks on a white background.

## Color Contrast Check

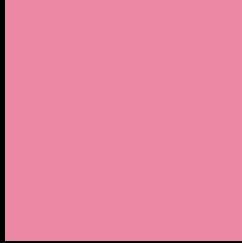
Large Text (above 18pt) WCAG AA × Fail

Any Text WCAG AA × Fail

Large Text (above 18pt) WCAG AAA × Fail

Any Text WCAG AAA × Fail

# Black Background



This preview shows how the Decimal color 15501476 looks on a black background.

## Color Contrast Check

Large Text (above 18pt) WCAG AA ✓ Pass

Any Text WCAG AA ✓ Pass

Large Text (above 18pt) WCAG AAA ✓ Pass

Any Text WCAG AAA ✓ Pass

If you want to check with other color combinations, try the [Color Contrast Checker](#).



## Decimal 15501476 Background



This preview shows how black text looks on a background with the Decimal color 15501476.

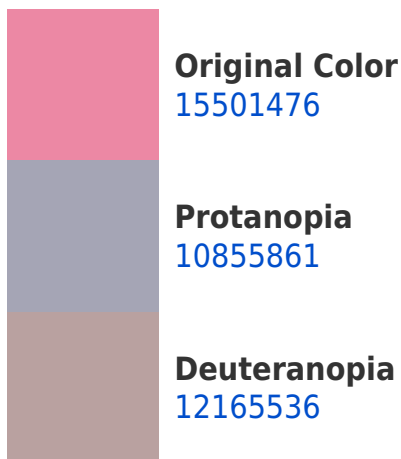



This preview shows how white text looks on a background with the Decimal color 15501476.

# Color Blindness Simulation

Color vision deficiency is a very complex topic, and I could not describe the different causes any better than Wikipedia does, so if you want to learn more, you should check out their [article about color blindness](#).

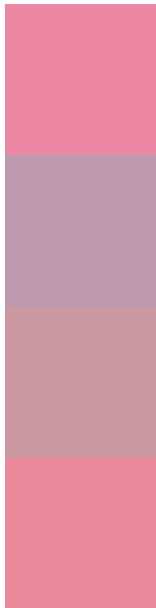
## Dichromacy





**Tritanopia**  
15436693

# Trichromacy



**Original Color**  
15501476

**Protanomaly**  
12556975

**Deuteranomaly**  
13408417

**Tritanomaly**  
15436442

# Monochromacy



**Original Color**  
15501476

**Achromatopsia**  
11119017

**Achromatomaly**  
12688807

# CSS Examples

## Text

The CSS property to change the color of the text to Decimal 15501476 is called "color". The color property can be set on classes, ids or directly on the HTML element.

This example shows how text in the color #EC88A4 looks like.

```
.text, #text, p{  
  color:#EC88A4  
}
```

If you want to add a text shadow in that color use the text-shadow property, you can generate a text shadow directly with our [CSS Text Shadow Generator](#).

Here you see how black text with a 4 pixel #EC88A4 colored shadow looks like.

```
.shadow{ text-shadow: 4px 4px 2px #EC88A4
}
```

## Border

The CSS property to change the border of an element to Decimal 15501476 is called "border". The border property can be set on classes, ids or directly on the HTML element.

This example shows the color as border, it can be applied via the CSS property "border" or "border-color".

```
.border, #border, table{ border:4px solid
#EC88A4 }
```

If only the border color should be changed use the property border-color.

```
.border{ border-color:#EC88A4 }
```

If you want to add a box shadow in that color use:

Here you see how a box with a 4 pixel #EC88A4 colored shadow looks like.

```
.boxshadow{ -moz-box-shadow:4px 4px 4px  
4px #EC88A4; -webkit-box-shadow:4px 4px  
4px 4px #EC88A4; box-shadow:4px 4px 4px  
4px #EC88A4 }
```

# Background

The CSS property to change the background color of an element to Decimal 15501476 is called "background". The background property can be set on classes, ids or directly on the HTML element.

```
.background, #background, body{  
background:#EC88A4 }
```

If only the background color should be changed can be used:

```
.background{ background-color:#EC88A4 }
```

This example shows the color as background, it is applied via the CSS property "background".

To optimize and compress your CSS code, you can use our [online CSS compressor and optimizer](#) based on csstidy. If you want to create a linear or radial gradient as background or border, check our [CSS Gradient Generator](#).



Hey! You found this booklet interesting? Support Converting Colors with the new Membership Option!

The pro membership hides all ads, plus gives you double the colors in the color bucket, and more awesome pro features!

**[Learn more, Memberships starting at \\$2.50/m!](#)**

**Follow me  
on Twitter!**

@ConvertingColor