

Converting Colors

Decimal(15518653)

Have a look what the booklet for
Decimal(15518653) contains.

Decimal(15518653)	3
<i>Conversions</i>	4
<i>Details</i>	6
<i>Harmonies</i>	11
<i>Previews</i>	23
<i>Color Blindness Simulation</i>	26
<i>CSS Examples</i>	29

Color

Decimal(15518653)

Conversions

Conversions Part 1

Format	Color
Hex	ECCBBD
RGB	236, 203, 189
RGB Percent	93%, 80%, 74%
CMY	0.0745, 0.2039, 0.2588
CMYK	0.00, 0.14, 0.20, 0.07
HSL	18°, 55%, 83%
HSV	18°, 20%, 93%
XYZ	65.1333, 64.2189, 57.1067
YIQ	211.2710, 24.1620, 2.6420

Conversions

Conversions Part 2

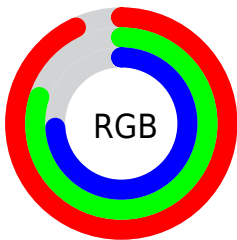
Format	Color
R _Y B	236, 209, 189
Decimal	15518653
CIE Lab	84.08, 9.44, 11.26
CIE LCh	84, 14.694, 50.031
Yxy	64.2189, 0.3493, 0.3444
Android (android.graphics.Color)	4293708733 (0xFFECCBBD)
YUV	211.2710, -10.9796, 21.6873
Hunter-Lab	80.1367, 4.8417, 13.8447

Details

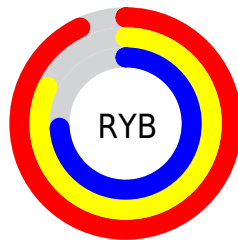
The Decimal color **15518653** is a light color, and the websafe version is hex **FFCCCC**. A complement of this color would be **12443372**, and the grayscale version is **13882323**.

A 20% lighter version of the original color is **16777205**, and **11834760** is the 20% darker color. If you saturate the color by 10%, you get **15514277**, and if you desaturate by 10%, it is **15523029**.

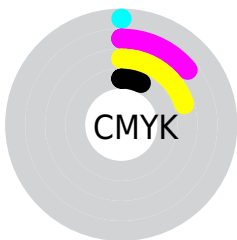
Distribution



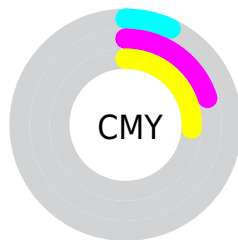
- Red (93%)
- Green (80%)
- Blue (74%)



- Red (93%)
- Yellow (82%)
- Blue (74%)



- Cyan (0%)
- Magenta (14%)
- Yellow (20%)
- Black (7%)



- Cyan (7%)
- Magenta (20%)
- Yellow (26%)

Brightness & Saturation Gradients

These gradients show how the Decimal color 15518653 changes by changing the brightness by 10 percent. The first figure shows a shift by +10% for each color and the second figure -10%.

Similar to the brightness gradients but the following saturation gradients show a change of the Decimal color 15518653 by changing the saturation by 10% instead.

 15518653

 15518653

16777215

 13676706

 16777205

 11834760

 10058606

 8282710

 6638143

 4994089

 3481108

 2098944

 0

 15518653

 15518653

 15514277

 15523029

 15510158

 15527148

 15505782

 15531519

 15501663

 15532031

 15497287

 15493167

 15488792

 15484416

Harmonies

Analogous

The Analogous color harmony consists of three colors that are next to each other on the color wheel.



15780297



15518653



14864311

Triad

The Triadic color harmony groups three colors that are evenly spaced from another and form a triangle on the color wheel.



15518653



11918028



13619436

Complementary

The Complementary color scheme is a pair of colors which are on the opposite of each other on the color wheel.



15518653



12443372

Split Complementary

Split-complementary colors differ from the complementary color scheme. The scheme consists of three colors, the original color and two neighbors of the complement color.



12506349



15518653



11524827

Square

The Square scheme is like the rectangle color scheme, but the four colors are evenly spaced on the color wheel.



15518653



12834752



11655398



14666724

Rectangle

The Rectangle color scheme consists of four colors that form a rectangle on the color wheel.



15518653



14209719



11655398



13226477

Sweetspot

The Sweet Spot groups the original color and five complimentary colors.



15518653



16774384



15515103



8419703



0



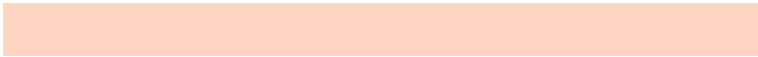
8421504

Same Dimension

The Same Dimension uses a secret algorithm to generate beautiful new colors.



15518653



16766146



15524541



7695722



11875840



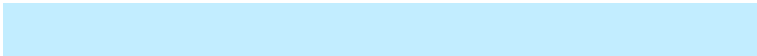
3543040

Inverse Universe

The Inverse Universe completely reimagines the original color for something new.



12443372



12774911



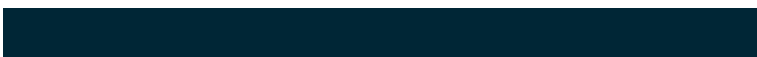
12437484



6976117



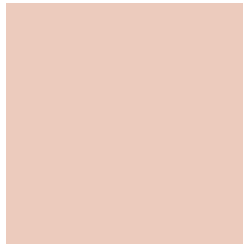
32693



9782

Previews

White Background



This preview shows how the Decimal color 15518653 looks on a white background.

Color Contrast Check

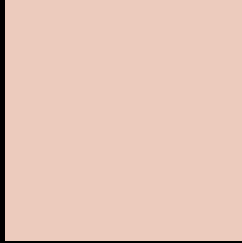
Large Text (above 18pt) WCAG AA × Fail

Any Text WCAG AA × Fail

Large Text (above 18pt) WCAG AAA × Fail

Any Text WCAG AAA × Fail

Black Background



This preview shows how the Decimal color 15518653 looks on a black background.

Color Contrast Check

Large Text (above 18pt) WCAG AA ✓ Pass

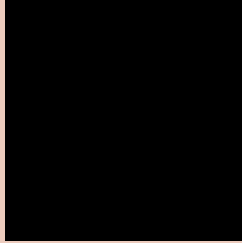
Any Text WCAG AA ✓ Pass

Large Text (above 18pt) WCAG AAA ✓ Pass

Any Text WCAG AAA ✓ Pass

If you want to check with other color combinations, try the [Color Contrast Checker](#).

Decimal 15518653 Background



This preview shows how black text looks on a background with the Decimal color 15518653.



This preview shows how white text looks on a background with the Decimal color 15518653.

Color Blindness Simulation

Color vision deficiency is a very complex topic, and I could not describe the different causes any better than Wikipedia does, so if you want to learn more, you should check out their [article about color blindness](#).

Dichromacy



Original Color
15518653

Protanopia
14340544

Deuteranopia
15649469



Tritanopia
15714263

Trichromacy



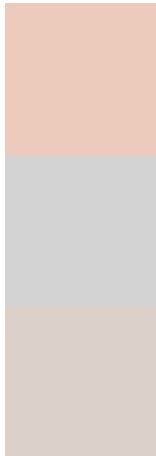
Original Color
15518653

Protanomaly
14798783

Deuteranomaly
15583933

Tritanomaly
15648974

Monochromacy



Original Color
15518653

Achromatopsia
13882323

Achromatomaly
14471371

CSS Examples

Text

The CSS property to change the color of the text to Decimal 15518653 is called "color". The color property can be set on classes, ids or directly on the HTML element.

This example shows how text in the color #ECCBBD looks like.

```
.text, #text, p{  
    color:#ECCBBD  
}
```

If you want to add a text shadow in that color use the text-shadow property, you can generate a text shadow directly with our [CSS Text Shadow Generator](#).

Here you see how black text with a 4 pixel #ECCBBD colored shadow looks like.

```
.shadow{ text-shadow: 4px 4px 2px #ECCBBD
}
```

Border

The CSS property to change the border of an element to Decimal 15518653 is called "border". The border property can be set on classes, ids or directly on the HTML element.

This example shows the color as border, it can be applied via the CSS property "border" or "border-color".

```
.border, #border, table{ border:4px solid
#ECCBBD }
```

If only the border color should be changed use the property `border-color`.

```
.border{ border-color:#ECCBBD }
```

If you want to add a box shadow in that color use:

Here you see how a box with a 4 pixel #ECCBBD colored shadow looks like.

```
.boxshadow{ -moz-box-shadow:4px 4px 4px  
4px #ECCBBD; -webkit-box-shadow:4px 4px  
4px 4px #ECCBBD; box-shadow:4px 4px 4px  
4px #ECCBBD }
```

Background

The CSS property to change the background color of an element to Decimal 15518653 is called "background". The background property can be set on classes, ids or directly on the HTML element.

```
.background, #background, body{  
background:#ECCBBD }
```

If only the background color should be changed can be used:

```
.background{ background-color:#ECCBBD }
```

This example shows the color as background, it is applied via the CSS property "background".

To optimize and compress your CSS code, you can use our [online CSS compressor and optimizer](#) based on csstidy. If you want to create a linear or radial gradient as background or border, check our [CSS Gradient Generator](#).

Hey! You found this booklet interesting? Support Converting Colors with the new Membership Option!

The pro membership hides all ads, plus gives you double the colors in the color bucket, and more awesome pro features!

[Learn more, Memberships starting at \\$2.50/m!](#)

**Follow me
on Twitter!**

@ConvertingColor