

Converting Colors

Decimal(15519183)

Have a look what the booklet for
Decimal(15519183) contains.

Decimal(15519183)	3
<i>Conversions</i>	4
<i>Details</i>	6
<i>Harmonies</i>	11
<i>Previews</i>	23
<i>Color Blindness Simulation</i>	26
<i>CSS Examples</i>	29

Color

Decimal(15519183)

Conversions

Conversions Part 1

Format	Color
Hex	ECCDCF
RGB	236, 205, 207
RGB Percent	93%, 80%, 81%
CMY	0.0745, 0.1961, 0.1882
CMYK	0.00, 0.13, 0.12, 0.07
HSL	356°, 45%, 86%
HSV	356°, 13%, 93%
XYZ	67.6859, 66.0005, 68.2034
YIQ	214.4970, 17.8340, 7.1940

Conversions

Conversions Part 2

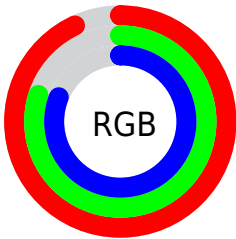
Format	Color
R _Y B	236, 205, 207
Decimal	15519183
CIE Lab	85.00, 11.17, 3.01
CIE LCh	85, 11.569, 15.069
Yxy	66.0005, 0.3353, 0.3269
Android (android.graphics.Color)	4293709263 (0xFFECCDCF)
YUV	214.4970, -3.6960, 18.8581
Hunter-Lab	81.2407, 6.5465, 7.0932

Details

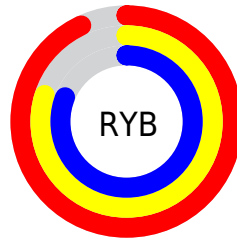
The Decimal color **15519183** is a light color, and the websafe version is hex **FFCCCC**. A complement of this color would be **13495530**, and the grayscale version is **14145495**.

A 20% lighter version of the original color is **16777215**, and **11835289** is the 20% darker color. If you saturate the color by 10%, you get **15513017**, and if you desaturate by 10%, it is **15525349**.

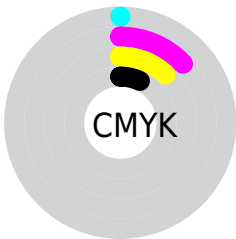
Distribution



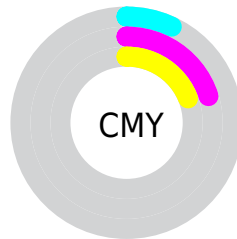
- Red (93%)
- Green (80%)
- Blue (81%)



- Red (93%)
- Yellow (80%)
- Blue (81%)



- Cyan (0%)
- Magenta (13%)
- Yellow (12%)
- Black (7%)



- Cyan (7%)
- Magenta (20%)
- Yellow (19%)

Brightness & Saturation Gradients

These gradients show how the Decimal color 15519183 changes by changing the brightness by 10 percent. The first figure shows a shift by +10% for each color and the second figure -10%.

Similar to the brightness gradients but the following saturation gradients show a change of the Decimal color 15519183 by changing the saturation by 10% instead.

15519183

15519183

16777215

13677235

11835289

10059135

8348774

6704206

5059895

3547170

2165003

0

 15519183

 15519183

 15513017

 15525349

 15507107

 15531259

 15500941

 15532031

 15495031

 15488865

 15482699

 15476788

 15470622

 15466511

Harmonies

Analogous

The Analogous color harmony consists of three colors that are next to each other on the color wheel.



15191514



15519183



15388613

Triad

The Triadic color harmony groups three colors that are evenly spaced from another and form a triangle on the color wheel.



15519183



13359301



12834793

Complementary

The Complementary color scheme is a pair of colors which are on the opposite of each other on the color wheel.



15519183



13495530

Split Complementary

Split-complementary colors differ from the complementary color scheme. The scheme consists of three colors, the original color and two neighbors of the complement color.



12311267



15519183



12638926

Square

The Square scheme is like the rectangle color scheme, but the four colors are evenly spaced on the color wheel.



15519183



14144959



12245977



13685737

Rectangle

The Rectangle color scheme consists of four colors that form a rectangle on the color wheel.



15519183



15126977



12245977



12572904

Sweetspot

The Sweet Spot groups the original color and five complimentary colors.



15519183



16774645



15388140



8419706



0



8421504

Same Dimension

The Same Dimension uses a secret algorithm to generate beautiful new colors.



15519183



16766681



15522509



7694954



11862028



3538947

Inverse Universe

The Inverse Universe completely reimagines the original color for something new.



15519183



16766681



13492204



7694954



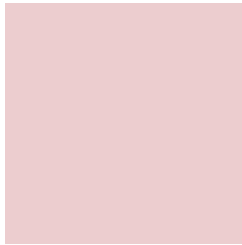
11862028



3538947

Previews

White Background



This preview shows how the Decimal color 15519183 looks on a white background.

Color Contrast Check

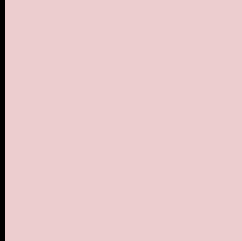
Large Text (above 18pt) WCAG AA × Fail

Any Text WCAG AA × Fail

Large Text (above 18pt) WCAG AAA × Fail

Any Text WCAG AAA × Fail

Black Background



This preview shows how the Decimal color 15519183 looks on a black background.

Color Contrast Check

Large Text (above 18pt) WCAG AA ✓ Pass

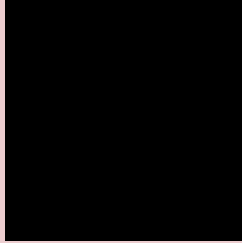
Any Text WCAG AA ✓ Pass

Large Text (above 18pt) WCAG AAA ✓ Pass

Any Text WCAG AAA ✓ Pass

If you want to check with other color combinations, try the [Color Contrast Checker](#).

Decimal 15519183 Background



This preview shows how black text looks on a background with the Decimal color 15519183.

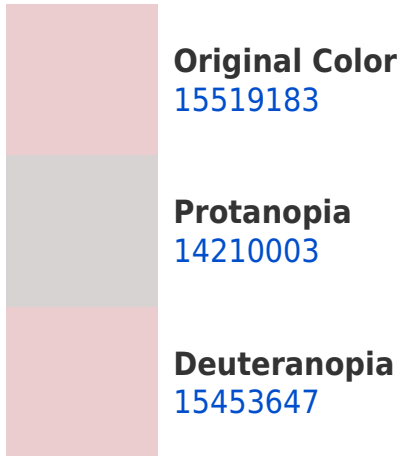



This preview shows how white text looks on a background with the Decimal color 15519183.

Color Blindness Simulation

Color vision deficiency is a very complex topic, and I could not describe the different causes any better than Wikipedia does, so if you want to learn more, you should check out their [article about color blindness](#).

Dichromacy





Tritanopia
15649755

Trichromacy



Original Color
15519183

Protanomaly
14668242

Deuteranomaly
15453647

Tritanomaly
15584471

Monochromacy



Original Color
15519183

Achromatopsia
14079702

Achromatomaly
14603219

CSS Examples

Text

The CSS property to change the color of the text to Decimal 15519183 is called "color". The color property can be set on classes, ids or directly on the HTML element.

This example shows how text in the color #ECCDCF looks like.

```
.text, #text, p{  
    color:#ECCDCF  
}
```

If you want to add a text shadow in that color use the text-shadow property, you can generate a text shadow directly with our [CSS Text Shadow Generator](#).

Here you see how black text with a 4 pixel #ECCDCF colored shadow looks like.

```
.shadow{ text-shadow: 4px 4px 2px #ECCDCF } }
```

Border

The CSS property to change the border of an element to Decimal 15519183 is called "border". The border property can be set on classes, ids or directly on the HTML element.

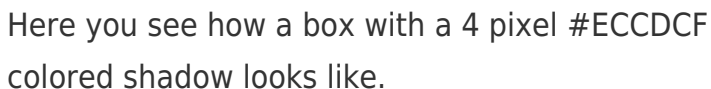
This example shows the color as border, it can be applied via the CSS property "border" or "border-color".

```
.border, #border, table{ border:4px solid #ECCDCF } }
```

If only the border color should be changed use the property `border-color`.

```
.border{ border-color:#ECCDCF }
```

If you want to add a box shadow in that color use:



Here you see how a box with a 4 pixel `#ECCDCF` colored shadow looks like.

```
.boxshadow{ -moz-box-shadow:4px 4px 4px  
4px #ECCDCF; -webkit-box-shadow:4px 4px  
4px 4px #ECCDCF; box-shadow:4px 4px 4px  
4px #ECCDCF }
```

Background

The CSS property to change the background color of an element to Decimal 15519183 is called "background". The background property can be set on classes, ids or directly on the HTML element.

```
.background, #background, body{  
background:#ECCDCF }
```

If only the background color should be changed can be used:

```
.background{ background-color:#ECCDCF }
```

This example shows the color as background, it is applied via the CSS property "background".

To optimize and compress your CSS code, you can use our [online CSS compressor and optimizer](#) based on csstidy. If you want to create a linear or radial gradient as background or border, check our [CSS Gradient Generator](#).

Hey! You found this booklet interesting? Support Converting Colors with the new Membership Option!

The pro membership hides all ads, plus gives you double the colors in the color bucket, and more awesome pro features!

[Learn more, Memberships starting at \\$2.50/m!](#)

**Follow me
on Twitter!**

@ConvertingColor