

# Converting Colors

Decimal(15519693)

Have a look what the booklet for  
Decimal(15519693) contains.

<b>Decimal(15519693)</b> .....	3
<i><b>Conversions</b></i> .....	4
<i><b>Details</b></i> .....	6
<i><b>Harmonies</b></i> .....	11
<i><b>Previews</b></i> .....	23
<i><b>Color Blindness Simulation</b></i> .....	26
<i><b>CSS Examples</b></i> .....	29

# **Color**

**Decimal(15519693)**

# Conversions

## Conversions Part 1

<b>Format</b>	<b>Color</b>
Hex	ECCFCD
RGB	236, 207, 205
RGB Percent	93%, 81%, 80%
CMY	0.0745, 0.1882, 0.1961
CMYK	0.00, 0.12, 0.13, 0.07
HSL	4°, 45%, 86%
HSV	4°, 13%, 93%
XYZ	67.9243, 66.8663, 67.0841
YIQ	215.4430, 17.9260, 5.5260

# Conversions

## Conversions Part 2

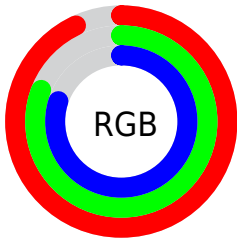
Format	Color
R <sub>Y</sub> B	236, 207, 205
Decimal	15519693
CIE Lab	85.44, 9.80, 4.71
CIE LCh	85, 10.872, 25.657
Yxy	66.8663, 0.3365, 0.3312
Android (android.graphics.Color)	4293709773 (0xFFECCFCD)
YUV	215.4430, -5.1484, 18.0285
Hunter-Lab	81.7718, 5.1716, 8.5998

# Details

The Decimal color **15519693** is a light color, and the websafe version is hex **FFCCCC**. A complement of this color would be **13495020**, and the grayscale version is **14145495**.

A 20% lighter version of the original color is **16777215**, and **11835799** is the 20% darker color. If you saturate the color by 10%, you get **15514037**, and if you desaturate by 10%, it is **15525349**.

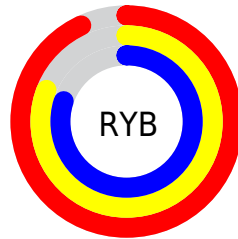
# Distribution



Red (93%)

Green (81%)

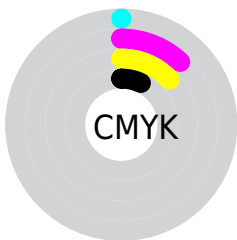
Blue (80%)



Red (93%)

Yellow (81%)

Blue (80%)

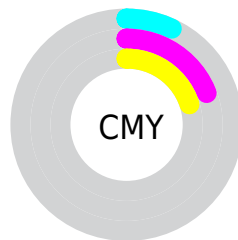


Cyan (0%)

Magenta (12%)

Yellow (13%)

Black (7%)



Cyan (7%)

Magenta (19%)

Yellow (20%)

# Brightness & Saturation Gradients

These gradients show how the Decimal color 15519693 changes by changing the brightness by 10 percent. The first figure shows a shift by +10% for each color and the second figure -10%.

Similar to the brightness gradients but the following saturation gradients show a change of the Decimal color 15519693 by changing the saturation by 10% instead.



15519693

15519693

16777215

13677490

11835799

10059645

8349284

6704716

5060406

3547424

2165769

0

 15519693

 15519693

 15514037

 15525349

 15508382

 15531004

 15502726

 15532031

 15497071

 15491415

 15485759

 15479848

 15474192

 15470336

# Harmonies

## Analogous

The Analogous color harmony consists of three colors that are next to each other on the color wheel.



15388631



15519693



15258053

# Triad

The Triadic color harmony groups three colors that are evenly spaced from another and form a triangle on the color wheel.



15519693



13228746



13228010

# Complementary

The Complementary color scheme is a pair of colors which are on the opposite of each other on the color wheel.



15519693



13495020

# Split Complementary

Split-complementary colors differ from the complementary color scheme. The scheme consists of three colors, the original color and two neighbors of the complement color.



12638950



15519693



12639444

# Square

The Square scheme is like the rectangle color scheme, but the four colors are evenly spaced on the color wheel.



15519693



13949123



12377054



14078952

# Rectangle

The Rectangle color scheme consists of four colors that form a rectangle on the color wheel.



15519693



14930882



12377054



12966121

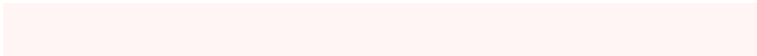


# Sweetspot

The Sweet Spot groups the original color and five complimentary colors.



15519693



16774645



15519210



8419961



0



8421504

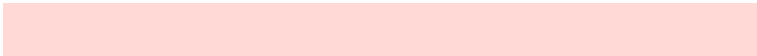


# Same Dimension

The Same Dimension uses a secret algorithm to generate beautiful new colors.



15519693



16767446



15523533



7694954



11865088



3539712

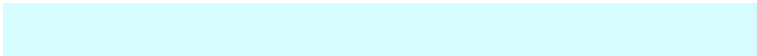


# Inverse Universe

The Inverse Universe completely reimagines the original color for something new.



13495020



14089471



13491180



6976885



43445

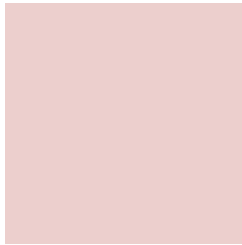


12854



# Previews

## White Background



This preview shows how the Decimal color 15519693 looks on a white background.

## Color Contrast Check

Large Text (above 18pt) WCAG AA × Fail

Any Text WCAG AA × Fail

Large Text (above 18pt) WCAG AAA × Fail

Any Text WCAG AAA × Fail

# Black Background



This preview shows how the Decimal color 15519693 looks on a black background.

## Color Contrast Check

Large Text (above 18pt) WCAG AA ✓ Pass

Any Text WCAG AA ✓ Pass

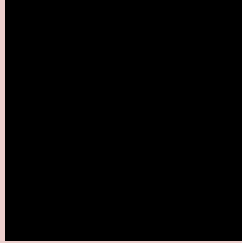
Large Text (above 18pt) WCAG AAA ✓ Pass

Any Text WCAG AAA ✓ Pass

If you want to check with other color combinations, try the [Color Contrast Checker](#).



## Decimal 15519693 Background



This preview shows how black text looks on a background with the Decimal color 15519693.




This preview shows how white text looks on a background with the Decimal color 15519693.

# Color Blindness Simulation

Color vision deficiency is a very complex topic, and I could not describe the different causes any better than Wikipedia does, so if you want to learn more, you should check out their [article about color blindness](#).

## Dichromacy





**Tritanopia**  
15650269

# Trichromacy



**Original Color**  
15519693

**Protanomaly**  
14799823

**Deuteranomaly**  
15584973

**Tritanomaly**  
15584983

# Monochromacy



**Original Color**  
15519693

**Achromatopsia**  
14145495

**Achromatomaly**  
14669011

# CSS Examples

## Text

The CSS property to change the color of the text to Decimal 15519693 is called "color". The color property can be set on classes, ids or directly on the HTML element.

This example shows how text in the color #ECCFCD looks like.

```
.text, #text, p{  
    color:#ECCFCD  
}
```

If you want to add a text shadow in that color use the text-shadow property, you can generate a text shadow directly with our [CSS Text Shadow Generator](#).

Here you see how black text with a 4 pixel #ECCFCD colored shadow looks like.

```
.shadow{ text-shadow: 4px 4px 2px #ECCFCD
}
```

## Border

The CSS property to change the border of an element to Decimal 15519693 is called "border". The border property can be set on classes, ids or directly on the HTML element.

This example shows the color as border, it can be applied via the CSS property "border" or "border-color".

```
.border, #border, table{ border:4px solid
#ECCFCD }
```

If only the border color should be changed use the property `border-color`.

```
.border{ border-color:#ECCFCD }
```

If you want to add a box shadow in that color use:

Here you see how a box with a 4 pixel #ECCFCD colored shadow looks like.

```
.boxshadow{ -moz-box-shadow:4px 4px 4px  
4px #ECCFCD; -webkit-box-shadow:4px 4px  
4px 4px #ECCFCD; box-shadow:4px 4px 4px  
4px #ECCFCD }
```

# Background

The CSS property to change the background color of an element to Decimal 15519693 is called "background". The background property can be set on classes, ids or directly on the HTML element.

```
.background, #background, body{  
background:#ECCFCD }
```

If only the background color should be changed can be used:

```
.background{ background-color:#ECCFCD }
```

This example shows the color as background, it is applied via the CSS property "background".

To optimize and compress your CSS code, you can use our [online CSS compressor and optimizer](#) based on csstidy. If you want to create a linear or radial gradient as background or border, check our [CSS Gradient Generator](#).



Hey! You found this booklet interesting? Support Converting Colors with the new Membership Option!

The pro membership hides all ads, plus gives you double the colors in the color bucket, and more awesome pro features!

**[Learn more, Memberships starting at \\$2.50/m!](#)**

**Follow me  
on Twitter!**

@ConvertingColor