

Converting Colors

Decimal(15519695)

Have a look what the booklet for
Decimal(15519695) contains.

Decimal(15519695)	3
<i>Conversions</i>	4
<i>Details</i>	6
<i>Harmonies</i>	11
<i>Previews</i>	23
<i>Color Blindness Simulation</i>	26
<i>CSS Examples</i>	29

Color

Decimal(15519695)

Conversions

Conversions Part 1

Format	Color
Hex	ECCFCF
RGB	236, 207, 207
RGB Percent	93%, 81%, 81%
CMY	0.0745, 0.1882, 0.1882
CMYK	0.00, 0.12, 0.12, 0.07
HSL	0°, 43%, 87%
HSV	0°, 12%, 93%
XYZ	68.1674, 66.9635, 68.3639
YIQ	215.6710, 17.2840, 6.1480

Conversions

Conversions Part 2

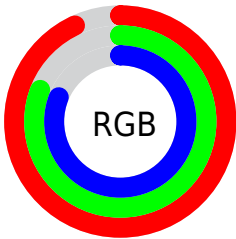
Format	Color
R _Y B	236, 207, 207
Decimal	15519695
CIE Lab	85.49, 10.12, 3.72
CIE LCh	85, 10.781, 20.164
Yxy	66.9635, 0.3350, 0.3291
Android (android.graphics.Color)	4293709775 (0xFFECCFCF)
YUV	215.6710, -4.2748, 17.8285
Hunter-Lab	81.8312, 5.4901, 7.7495

Details

The Decimal color **15519695** is a light color, and the websafe version is hex **FFCCCC**, and the color name is **lotion pink**. A complement of this color would be **13626604**, and the grayscale version is **14211288**.

A 20% lighter version of the original color is **16777215**, and **11835801** is the 20% darker color. If you saturate the color by 10%, you get **15513527**, and if you desaturate by 10%, it is **15525863**.

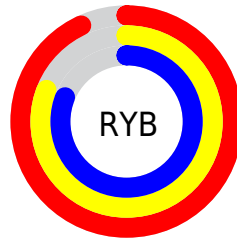
Distribution



Red (93%)

Green (81%)

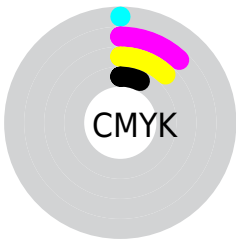
Blue (81%)



Red (93%)

Yellow (81%)

Blue (81%)

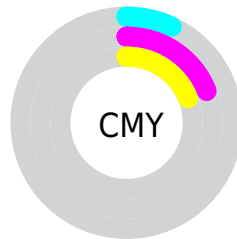


Cyan (0%)

Magenta (12%)

Yellow (12%)

Black (7%)



Cyan (7%)

Magenta (19%)

Yellow (19%)

Brightness & Saturation Gradients

These gradients show how the Decimal color 15519695 changes by changing the brightness by 10 percent. The first figure shows a shift by +10% for each color and the second figure -10%.

Similar to the brightness gradients but the following saturation gradients show a change of the Decimal color 15519695 by changing the saturation by 10% instead.

15519695

15519695

16777215

13677491

11835801

10059647

8349286

6704718

5060407

3547426

2165771

0

 15519695

 15519695

 15513527

 15525863

 15507616

 15531774

 15501448

 15532031

 15495537

 15489369

 15483201

 15477290

 15471122

 15466496

Harmonies

Analogous

The Analogous color harmony consists of three colors that are next to each other on the color wheel.



15323097



15519695



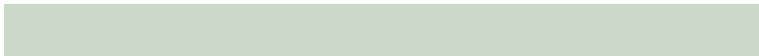
15323590

Triad

The Triadic color harmony groups three colors that are evenly spaced from another and form a triangle on the color wheel.



15519695



13359816



13097193

Complementary

The Complementary color scheme is a pair of colors which are on the opposite of each other on the color wheel.



15519695



13626604

Split Complementary

Split-complementary colors differ from the complementary color scheme. The scheme consists of three colors, the original color and two neighbors of the complement color.



12573413



15519695



12704978

Square

The Square scheme is like the rectangle color scheme, but the four colors are evenly spaced on the color wheel.



15519695



14145474



12442844



13948137

Rectangle

The Rectangle color scheme consists of four colors that form a rectangle on the color wheel.



15519695



15061955



12442844



12900840

Sweetspot

The Sweet Spot groups the original color and five complimentary colors.



15519695



16774645



15519724



8419705



0



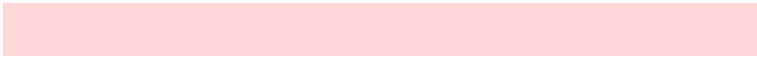
8421504

Same Dimension

The Same Dimension uses a secret algorithm to generate beautiful new colors.



15519695



16767449



15523279



7694954



11862016



3538944

Inverse Universe

The Inverse Universe completely reimagines the original color for something new.



13626604



14286847



13622764



6976885



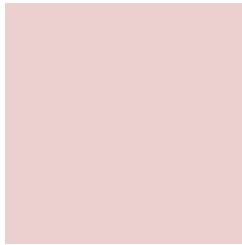
46517



13878

Previews

White Background



This preview shows how the Decimal color 15519695 looks on a white background.

Color Contrast Check

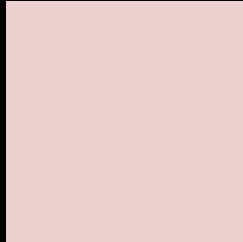
Large Text (above 18pt) WCAG AA × Fail

Any Text WCAG AA × Fail

Large Text (above 18pt) WCAG AAA × Fail

Any Text WCAG AAA × Fail

Black Background



This preview shows how the Decimal color 15519695 looks on a black background.

Color Contrast Check

Large Text (above 18pt) WCAG AA ✓ Pass

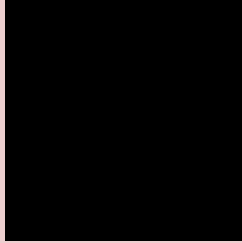
Any Text WCAG AA ✓ Pass

Large Text (above 18pt) WCAG AAA ✓ Pass

Any Text WCAG AAA ✓ Pass

If you want to check with other color combinations, try the [Color Contrast Checker](#).

Decimal 15519695 Background



This preview shows how black text looks on a background with the Decimal color 15519695.



This preview shows how white text looks on a background with the Decimal color 15519695.

Color Blindness Simulation

Color vision deficiency is a very complex topic, and I could not describe the different causes any better than Wikipedia does, so if you want to learn more, you should check out their [article about color blindness](#).

Dichromacy





Tritanopia
15650269

Trichromacy



Original Color
15519695

Protanomaly
14799825

Deuteranomaly
15585231

Tritanomaly
15584984

Monochromacy



Original Color
15519695

Achromatopsia
14211288

Achromatomaly
14669269

CSS Examples

Text

The CSS property to change the color of the text to Decimal 15519695 is called "color". The color property can be set on classes, ids or directly on the HTML element.

This example shows how text in the color #ECCFCF looks like.

```
.text, #text, p{  
    color:#ECCFCF  
}
```

If you want to add a text shadow in that color use the text-shadow property, you can generate a text shadow directly with our [CSS Text Shadow Generator](#).

Here you see how black text with a 4 pixel #ECCFCF colored shadow looks like.

```
.shadow{ text-shadow: 4px 4px 2px #ECCFCF } }
```

Border

The CSS property to change the border of an element to Decimal 15519695 is called "border". The border property can be set on classes, ids or directly on the HTML element.

This example shows the color as border, it can be applied via the CSS property "border" or "border-color".

```
.border, #border, table{ border:4px solid #ECCFCF } }
```

If only the border color should be changed use the property `border-color`.

```
.border{ border-color:#ECCFCF }
```

If you want to add a box shadow in that color use:

Here you see how a box with a 4 pixel #ECCFCF colored shadow looks like.

```
.boxshadow{ -moz-box-shadow:4px 4px 4px  
4px #ECCFCF; -webkit-box-shadow:4px 4px  
4px 4px #ECCFCF; box-shadow:4px 4px 4px  
4px #ECCFCF }
```

Background

The CSS property to change the background color of an element to Decimal 15519695 is called "background". The background property can be set on classes, ids or directly on the HTML element.

```
.background, #background, body{  
background:#ECCFCF }
```

If only the background color should be changed can be used:

```
.background{ background-color:#ECCFCF }
```

This example shows the color as background, it is applied via the CSS property "background".

To optimize and compress your CSS code, you can use our [online CSS compressor and optimizer](#) based on csstidy. If you want to create a linear or radial gradient as background or border, check our [CSS Gradient Generator](#).

Hey! You found this booklet interesting? Support Converting Colors with the new Membership Option!

The pro membership hides all ads, plus gives you double the colors in the color bucket, and more awesome pro features!

[Learn more, Memberships starting at \\$2.50/m!](#)

**Follow me
on Twitter!**

@ConvertingColor