

# Converting Colors

Decimal(15519944)

Have a look what the booklet for  
Decimal(15519944) contains.

<b>Decimal(15519944)</b> .....	3
<i><b>Conversions</b></i> .....	4
<i><b>Details</b></i> .....	6
<i><b>Harmonies</b></i> .....	11
<i><b>Previews</b></i> .....	23
<i><b>Color Blindness Simulation</b></i> .....	26
<i><b>CSS Examples</b></i> .....	29

# **Color**

**Decimal(15519944)**

# Conversions

## Conversions Part 1

Format	Color
Hex	ECD0C8
RGB	236, 208, 200
RGB Percent	93%, 82%, 78%
CMY	0.0745, 0.1843, 0.2157
CMYK	0.00, 0.12, 0.15, 0.07
HSL	13°, 49%, 85%
HSV	13°, 15%, 93%
XYZ	67.5733, 67.1147, 64.0365
YIQ	215.4600, 19.2560, 3.4480

# Conversions

## Conversions Part 2

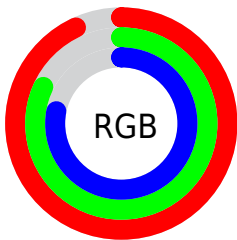
Format	Color
R <sub>Y</sub> B	236, 210, 200
Decimal	15519944
CIE Lab	85.56, 8.49, 7.54
CIE LCh	86, 11.353, 41.619
Yxy	67.1147, 0.3400, 0.3377
Android (android.graphics.Color)	4293710024 (0xFFECD0C8)
YUV	215.4600, -7.6218, 18.0136
Hunter-Lab	81.9236, 3.8664, 11.0018

# Details

The Decimal color **15519944** is a light color, and the websafe version is hex **FFCCCC**. A complement of this color would be **13165804**, and the grayscale version is **14211288**.

A 20% lighter version of the original color is **16777215**, and **11836050** is the 20% darker color. If you saturate the color by 10%, you get **15515312**, and if you desaturate by 10%, it is **15524576**.

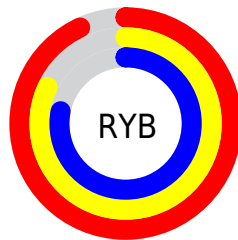
# Distribution



Red (93%)

Green (82%)

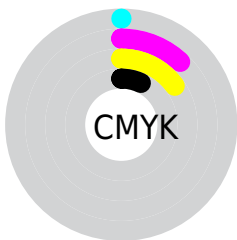
Blue (78%)



Red (93%)

Yellow (82%)

Blue (78%)

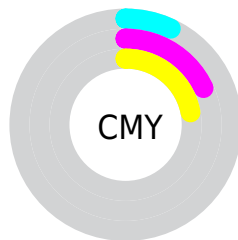


Cyan (0%)

Magenta (12%)

Yellow (15%)

Black (7%)



Cyan (7%)

Magenta (18%)

Yellow (22%)

# Brightness & Saturation Gradients

These gradients show how the Decimal color 15519944 changes by changing the brightness by 10 percent. The first figure shows a shift by +10% for each color and the second figure -10%.

Similar to the brightness gradients but the following saturation gradients show a change of the Decimal color 15519944 by changing the saturation by 10% instead.





 15519944

 15519944

 15515312

 15524576

 15510425

 15529463

 15505793

 15532031

 15501162

 15496274

 15491642

 15487011

 15482123

 15479808

# Harmonies

## Analogous

The Analogous color harmony consists of three colors that are next to each other on the color wheel.



15585234



15519944



15061954

# Triad

The Triadic color harmony groups three colors that are evenly spaced from another and form a triangle on the color wheel.



15519944



12836047



13686251

# Complementary

The Complementary color scheme is a pair of colors which are on the opposite of each other on the color wheel.



15519944



13165804

# Split Complementary

Split-complementary colors differ from the complementary color scheme. The scheme consists of three colors, the original color and two neighbors of the complement color.



12900842



15519944



12377306

# Square

The Square scheme is like the rectangle color scheme, but the four colors are evenly spaced on the color wheel.



15519944



13556422



12377060



14537446

# Rectangle

The Rectangle color scheme consists of four colors that form a rectangle on the color wheel.



15519944



14603713



12377060



13359083



# Sweetspot

The Sweet Spot groups the original color and five complimentary colors.



15519944



16774642



15517924



8419960



0



8421504



# Same Dimension

The Same Dimension uses a secret algorithm to generate beautiful new colors.



15519944



16767953



15524552



7695466



11872256



3542016

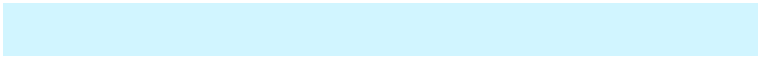


# Inverse Universe

The Inverse Universe completely reimagines the original color for something new.



13165804



13759999



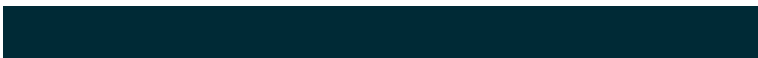
13161196



6976373



36277

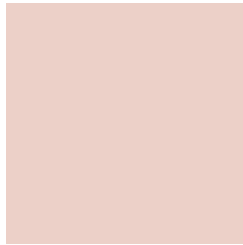


10806



# Previews

## White Background



This preview shows how the Decimal color 15519944 looks on a white background.

## Color Contrast Check

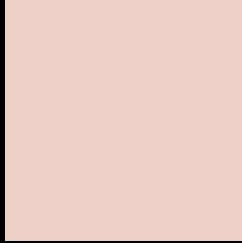
Large Text (above 18pt) WCAG AA × Fail

Any Text WCAG AA × Fail

Large Text (above 18pt) WCAG AAA × Fail

Any Text WCAG AAA × Fail

# Black Background



This preview shows how the Decimal color 15519944 looks on a black background.

## Color Contrast Check

Large Text (above 18pt) WCAG AA ✓ Pass

Any Text WCAG AA ✓ Pass

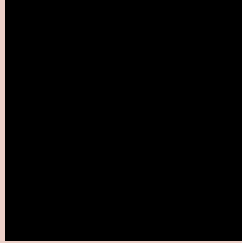
Large Text (above 18pt) WCAG AAA ✓ Pass

Any Text WCAG AAA ✓ Pass

If you want to check with other color combinations, try the [Color Contrast Checker](#).



## Decimal 15519944 Background



This preview shows how black text looks on a background with the Decimal color 15519944.



This preview shows how white text looks on a background with the Decimal color 15519944.

# Color Blindness Simulation

Color vision deficiency is a very complex topic, and I could not describe the different causes any better than Wikipedia does, so if you want to learn more, you should check out their [article about color blindness](#).

## Dichromacy





**Tritanopia**  
15715805

# Trichromacy



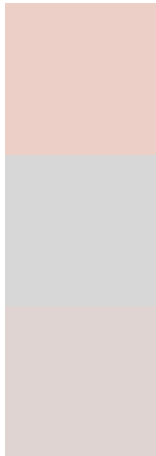
**Original Color**  
15519944

**Protanomaly**  
14865354

**Deuteranomaly**  
15716296

**Tritanomaly**  
15650517

# Monochromacy



**Original Color**  
15519944

**Achromatopsia**  
14145495

**Achromatomaly**  
14669010

# CSS Examples

## Text

The CSS property to change the color of the text to Decimal 15519944 is called "color". The color property can be set on classes, ids or directly on the HTML element.

This example shows how text in the color #ECD0C8 looks like.

```
.text, #text, p{  
  color:#ECD0C8  
}
```

If you want to add a text shadow in that color use the text-shadow property, you can generate a text shadow directly with our [CSS Text Shadow Generator](#).

Here you see how black text with a 4 pixel #ECD0C8 colored shadow looks like.

```
.shadow{ text-shadow: 4px 4px 2px #ECD0C8  
}
```

## Border

The CSS property to change the border of an element to Decimal 15519944 is called "border". The border property can be set on classes, ids or directly on the HTML element.

This example shows the color as border, it can be applied via the CSS property "border" or "border-color".

```
.border, #border, table{ border:4px solid  
#ECD0C8 }
```

If only the border color should be changed use the property `border-color`.

```
.border{ border-color:#ECD0C8 }
```

If you want to add a box shadow in that color use:

Here you see how a box with a 4 pixel #ECD0C8 colored shadow looks like.

```
.boxshadow{ -moz-box-shadow:4px 4px 4px  
4px #ECD0C8; -webkit-box-shadow:4px 4px  
4px 4px #ECD0C8; box-shadow:4px 4px 4px  
4px #ECD0C8 }
```

# Background

The CSS property to change the background color of an element to Decimal 15519944 is called "background". The background property can be set on classes, ids or directly on the HTML element.

```
.background, #background, body{  
background:#ECD0C8 }
```

If only the background color should be changed can be used:

```
.background{ background-color:#ECD0C8 }
```

This example shows the color as background, it is applied via the CSS property "background".

To optimize and compress your CSS code, you can use our [online CSS compressor and optimizer](#) based on csstidy. If you want to create a linear or radial gradient as background or border, check our [CSS Gradient Generator](#).



Hey! You found this booklet interesting? Support Converting Colors with the new Membership Option!

The pro membership hides all ads, plus gives you double the colors in the color bucket, and more awesome pro features!

**[Learn more, Memberships starting at \\$2.50/m!](#)**

**Follow me  
on Twitter!**

@ConvertingColor