

Converting Colors

Decimal(15543405)

Have a look what the booklet for
Decimal(15543405) contains.

Decimal(15543405)	3
<i>Conversions</i>	4
<i>Details</i>	6
<i>Harmonies</i>	11
<i>Previews</i>	23
<i>Color Blindness Simulation</i>	26
<i>CSS Examples</i>	29

Color

Decimal(15543405)

Conversions

Conversions Part 1

Format	Color
Hex	ED2C6D
RGB	237, 44, 109
RGB Percent	93%, 17%, 43%
CMY	0.0706, 0.8275, 0.5725
CMYK	0.00, 0.81, 0.54, 0.07
HSL	340°, 84%, 55%
HSV	340°, 81%, 93%
XYZ	38.5861, 20.9100, 16.4703
YIQ	109.1170, 94.1630, 61.1310

Conversions

Conversions Part 2

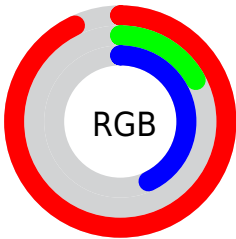
Format	Color
R_{YB}	237, 44, 109
Decimal	15543405
CIE _{Lab}	52.85, 73.46, 12.14
CIE _{LCh}	53, 74.452, 9.388
Yxy	20.9100, 0.5079, 0.2753
Android (android.graphics.Color)	4293733485 (0xFFED2C6D)
YUV	109.1170, -0.0577, 112.1534
Hunter-Lab	45.7275, 70.6000, 10.6539

Details

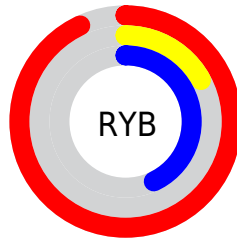
The Decimal color **15543405** is a dark color, and the websafe version is hex **FF3366**. The color can be described as dark washed rose. A complement of this color would be **2944428**, and the grayscale version is **7171437**.

A 20% lighter version of the original color is **16740256**, and **11403326** is the 20% darker color. If you saturate the color by 10%, you get **15537245**, and if you desaturate by 10%, it is **15549565**.

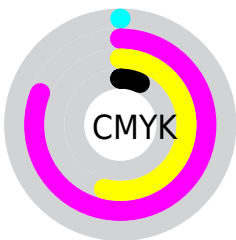
Distribution



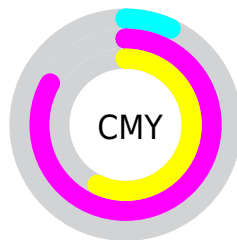
- Red (93%)
- Green (17%)
- Blue (43%)



- Red (93%)
- Yellow (17%)
- Blue (43%)



- Cyan (0%)
- Magenta (81%)
- Yellow (54%)
- Black (7%)



- Cyan (7%)
- Magenta (83%)
- Yellow (57%)

Brightness & Saturation Gradients

These gradients show how the Decimal color 15543405 changes by changing the brightness by 10 percent. The first figure shows a shift by +10% for each color and the second figure -10%.

Similar to the brightness gradients but the following saturation gradients show a change of the Decimal color 15543405 by changing the saturation by 10% instead.

 15543405

 15543405

16777215

 13434965

 16740256

 11403326

 16747963

 9371689

 16755415

 7405589

 16763123

 5439491

 16770815

 3407874

 0

 15543405

 15543405

 15537245

 15549565

 15532112

 15555468

 15561628

 15567788

 15573948

 15579851

 15586011

 15592171

 15597562

Harmonies

Analogous

The Analogous color harmony consists of three colors that are next to each other on the color wheel.



14171565



15543405



14764335

Triad

The Triadic color harmony groups three colors that are evenly spaced from another and form a triangle on the color wheel.



15543405



3969024



37367

Complementary

The Complementary color scheme is a pair of colors which are on the opposite of each other on the color wheel.



15543405



2944428

Split Complementary

Split-complementary colors differ from the complementary color scheme. The scheme consists of three colors, the original color and two neighbors of the complement color.



39375



15543405



38734

Square

The Square scheme is like the rectangle color scheme, but the four colors are evenly spaced on the color wheel.



15543405



8880640



39569



33022

Rectangle

The Rectangle color scheme consists of four colors that form a rectangle on the color wheel.



15543405



13262848



39569



38381

Sweetspot

The Sweet Spot groups the original color and five complimentary colors.



15543405



16761558



11087085



8412007



0



8421504

Same Dimension

The Same Dimension uses a secret algorithm to generate beautiful new colors.



15543405



16713049



15550764



7694958



11862077



3538962

Inverse Universe

The Inverse Universe completely reimagines the original color for something new.



15543405



16713049



2937069



7694958



11862077



3538962

Previews

White Background



This preview shows how the Decimal color 15543405 looks on a white background.

Color Contrast Check

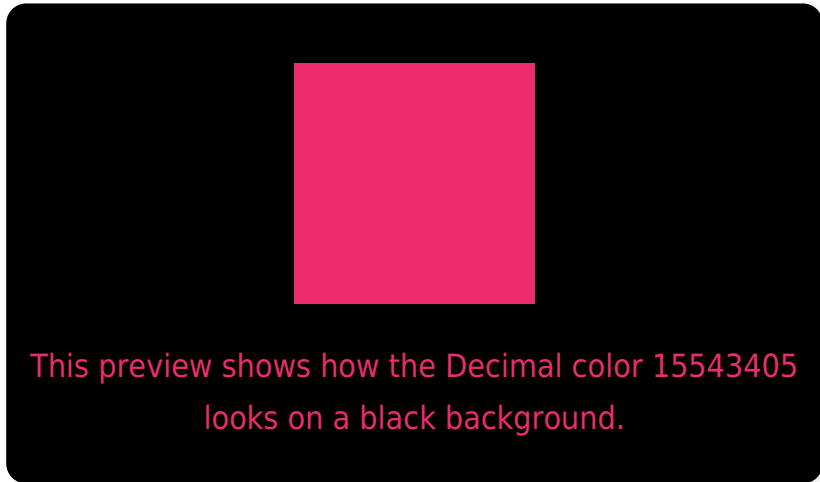
Large Text (above 18pt) WCAG AA ✓ Pass

Any Text WCAG AA × Fail

Large Text (above 18pt) WCAG AAA × Fail

Any Text WCAG AAA × Fail

Black Background



Color Contrast Check

Large Text (above 18pt) WCAG AA ✓ Pass

Any Text WCAG AA ✓ Pass

Large Text (above 18pt) WCAG AAA ✓ Pass

Any Text WCAG AAA × Fail

If you want to check with other color combinations, try the [Color Contrast Checker](#).

Decimal 15543405 Background



This preview shows how black text looks on a background with the Decimal color 15543405.

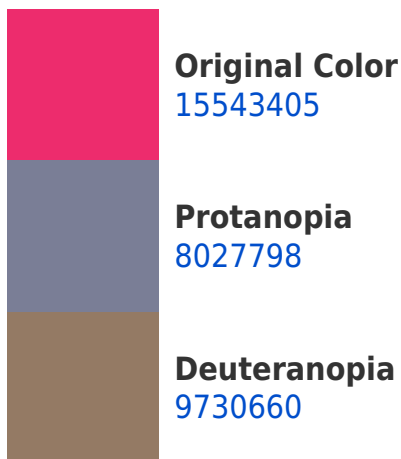



This preview shows how white text looks on a background with the Decimal color 15543405.

Color Blindness Simulation

Color vision deficiency is a very complex topic, and I could not describe the different causes any better than Wikipedia does, so if you want to learn more, you should check out their [article about color blindness](#).

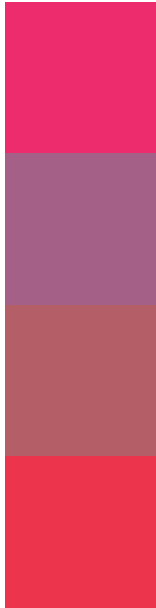
Dichromacy





Tritanopia
15415867

Trichromacy



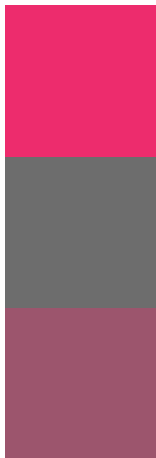
Original Color
15543405

Protanomaly
10772615

Deuteranomaly
11820647

Tritanomaly
15480141

Monochromacy



Original Color
15543405

Achromatopsia
7171437

Achromatomaly
10245485

CSS Examples

Text

The CSS property to change the color of the text to Decimal 15543405 is called "color". The color property can be set on classes, ids or directly on the HTML element.

This example shows how text in the color #ED2C6D looks like.

```
.text, #text, p{  
    color:#ED2C6D  
}
```

If you want to add a text shadow in that color use the text-shadow property, you can generate a text shadow directly with our [CSS Text Shadow Generator](#).

Here you see how black text with a 4 pixel #ED2C6D colored shadow looks like.

```
.shadow{ text-shadow: 4px 4px 2px #ED2C6D
}
```

Border

The CSS property to change the border of an element to Decimal 15543405 is called "border". The border property can be set on classes, ids or directly on the HTML element.

This example shows the color as border, it can be applied via the CSS property "border" or "border-color".

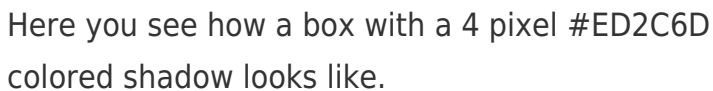
```
.border, #border, table{ border:4px solid
#ED2C6D }
```

If only the border color should be changed use the property `border-color`.

```
.border{ border-color:#ED2C6D }
```

If you want to add a box shadow in that color use:

Here you see how a box with a 4 pixel #ED2C6D colored shadow looks like.



```
.boxshadow{ -moz-box-shadow:4px 4px 4px  
4px #ED2C6D; -webkit-box-shadow:4px 4px  
4px 4px #ED2C6D; box-shadow:4px 4px 4px  
4px #ED2C6D }
```

Background

The CSS property to change the background color of an element to Decimal 15543405 is called "background". The background property can be set on classes, ids or directly on the HTML element.

```
.background, #background, body{  
background:#ED2C6D }
```

If only the background color should be changed can be used:

```
.background{ background-color:#ED2C6D }
```

This example shows the color as background, it is applied via the CSS property "background".

To optimize and compress your CSS code, you can use our [online CSS compressor and optimizer](#) based on csstidy. If you want to create a linear or radial gradient as background or border, check our [CSS Gradient Generator](#).

Hey! You found this booklet interesting? Support Converting Colors with the new Membership Option!

The pro membership hides all ads, plus gives you double the colors in the color bucket, and more awesome pro features!

[Learn more, Memberships starting at \\$2.50/m!](#)

**Follow me
on Twitter!**

@ConvertingColor