

Converting Colors

Decimal(15544424)

Have a look what the booklet for
Decimal(15544424) contains.

Decimal(15544424)	3
<i>Conversions</i>	4
<i>Details</i>	6
<i>Harmonies</i>	11
<i>Previews</i>	23
<i>Color Blindness Simulation</i>	26
<i>CSS Examples</i>	29

Color

Decimal(15544424)

Conversions

Conversions Part 1

Format	Color
Hex	ED3068
RGB	237, 48, 104
RGB Percent	93%, 19%, 41%
CMY	0.0706, 0.8118, 0.5922
CMYK	0.00, 0.80, 0.56, 0.07
HSL	342°, 84%, 56%
HSV	342°, 80%, 93%
XYZ	38.4807, 21.1179, 15.1447
YIQ	110.8950, 94.6680, 57.4840

Conversions

Conversions Part 2

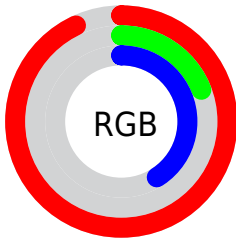
Format	Color
R_{YB}	237, 48, 104
Decimal	15544424
CIE _{Lab}	53.08, 72.14, 15.48
CIE _{LCh}	53, 73.779, 12.108
Yxy	21.1179, 0.5148, 0.2825
Android (android.graphics.Color)	4293734504 (0xFFED3068)
YUV	110.8950, -3.3992, 110.5941
Hunter-Lab	45.9542, 69.0507, 12.6283

Details

The Decimal color **15544424** is a dark color, and the websafe version is hex **FF3366**. The color can be described as dark washed rose. A complement of this color would be **3206581**, and the grayscale version is **7303023**.

A 20% lighter version of the original color is **16740763**, and **11403322** is the 20% darker color. If you saturate the color by 10%, you get **15538263**, and if you desaturate by 10%, it is **15550585**.

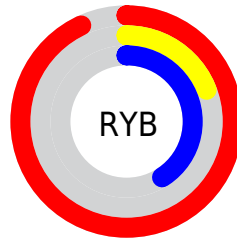
Distribution



Red (93%)

Green (19%)

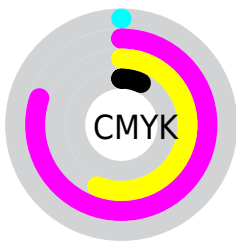
Blue (41%)



Red (93%)

Yellow (19%)

Blue (41%)

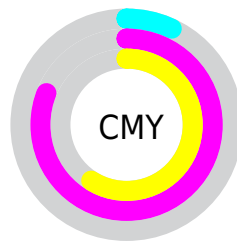


Cyan (0%)

Magenta (80%)

Yellow (56%)

Black (7%)



Cyan (7%)

Magenta (81%)

Yellow (59%)

Brightness & Saturation Gradients

These gradients show how the Decimal color 15544424 changes by changing the brightness by 10 percent. The first figure shows a shift by +10% for each color and the second figure -10%.

Similar to the brightness gradients but the following saturation gradients show a change of the Decimal color 15544424 by changing the saturation by 10% instead.

 15544424  15544424

16777215  13434960

 16740763  11403322

 16748469  9371685

 16755921  7340048

 16763629  5373955

 16771327  3407874

 0

 15544424  15544424

 15538263  15550585

■ 15532359

■ 15556489

■ 15532102

■ 15562650

■ 15568811

■ 15574715

■ 15580876

■ 15587037

■ 15593197

■ 15597566

Harmonies

Analogous

The Analogous color harmony consists of three colors that are next to each other on the color wheel.



14367911



15544424



14569003

Triad

The Triadic color harmony groups three colors that are evenly spaced from another and form a triangle on the color wheel.



15544424



3444998



37368

Complementary

The Complementary color scheme is a pair of colors which are on the opposite of each other on the color wheel.



15544424



3206581

Split Complementary

Split-complementary colors differ from the complementary color scheme. The scheme consists of three colors, the original color and two neighbors of the complement color.



39379



15544424



38997

Square

The Square scheme is like the rectangle color scheme, but the four colors are evenly spaced on the color wheel.



15544424



8553472



39576



32508

Rectangle

The Rectangle color scheme consists of four colors that form a rectangle on the color wheel.



15544424



13067264



39576



38127

Sweetspot

The Sweet Spot groups the original color and five complimentary colors.



15544424



16761556



11809005



8412005



0



8421504

Same Dimension

The Same Dimension uses a secret algorithm to generate beautiful new colors.



15544424



16714323



15554096



7694957



11862070



3538960

Inverse Universe

The Inverse Universe completely reimagines the original color for something new.



15544424



16714323



3196909



7694957



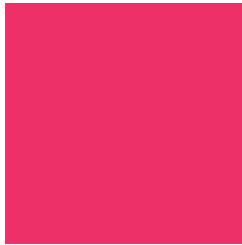
11862070



3538960

Previews

White Background



This preview shows how the Decimal color 15544424 looks on a white background.

Color Contrast Check

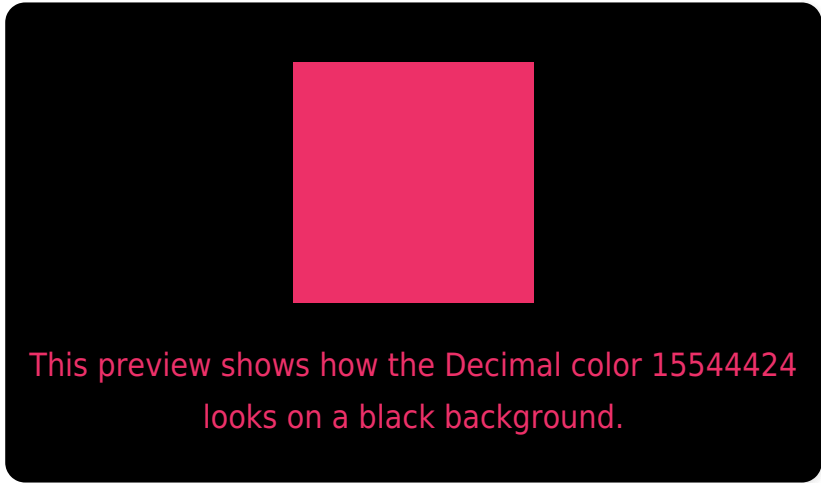
Large Text (above 18pt) WCAG AA ✓ Pass

Any Text WCAG AA × Fail

Large Text (above 18pt) WCAG AAA × Fail

Any Text WCAG AAA × Fail

Black Background



Color Contrast Check

Large Text (above 18pt) WCAG AA ✓ Pass

Any Text WCAG AA ✓ Pass

Large Text (above 18pt) WCAG AAA ✓ Pass

Any Text WCAG AAA × Fail

If you want to check with other color combinations, try the [Color Contrast Checker](#).

Decimal 15544424 Background



This preview shows how black text looks on a background with the Decimal color 15544424.



This preview shows how white text looks on a background with the Decimal color 15544424.

Color Blindness Simulation

Color vision deficiency is a very complex topic, and I could not describe the different causes any better than Wikipedia does, so if you want to learn more, you should check out their [article about color blindness](#).

Dichromacy

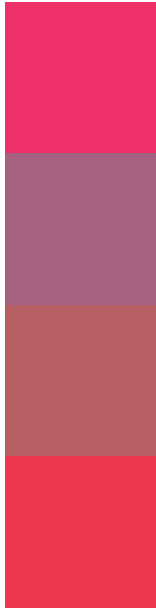


Original Color
15544424

Protanopia
8224398

Deuteranopia
9861727

Trichromacy



Original Color
15544424

Protanomaly
10904192

Deuteranomaly
11951970

Tritanomaly
15480653

Monochromacy



Original Color
15544424

Achromatopsia
7303023

Achromatomaly
10311788

CSS Examples

Text

The CSS property to change the color of the text to Decimal 15544424 is called "color". The color property can be set on classes, ids or directly on the HTML element.

This example shows how text in the color #ED3068 looks like.

```
.text, #text, p{  
    color:#ED3068  
}
```

If you want to add a text shadow in that color use the text-shadow property, you can generate a text shadow directly with our [CSS Text Shadow Generator](#).

Here you see how black text with a 4 pixel #ED3068 colored shadow looks like.

```
.shadow{ text-shadow: 4px 4px 2px #ED3068
}
```

Border

The CSS property to change the border of an element to Decimal 15544424 is called "border". The border property can be set on classes, ids or directly on the HTML element.

This example shows the color as border, it can be applied via the CSS property "border" or "border-color".

```
.border, #border, table{ border:4px solid
#ED3068 }
```

If only the border color should be changed use the property `border-color`.

```
.border{ border-color:#ED3068 }
```

If you want to add a box shadow in that color use:

Here you see how a box with a 4 pixel #ED3068 colored shadow looks like.

```
.boxshadow{ -moz-box-shadow:4px 4px 4px  
4px #ED3068; -webkit-box-shadow:4px 4px  
4px 4px #ED3068; box-shadow:4px 4px 4px  
4px #ED3068 }
```

Background

The CSS property to change the background color of an element to Decimal 15544424 is called "background". The background property can be set on classes, ids or directly on the HTML element.

```
.background, #background, body{  
background:#ED3068 }
```

If only the background color should be changed can be used:

```
.background{ background-color:#ED3068 }
```

This example shows the color as background, it is applied via the CSS property "background".

To optimize and compress your CSS code, you can use our [online CSS compressor and optimizer](#) based on csstidy. If you want to create a linear or radial gradient as background or border, check our [CSS Gradient Generator](#).

Hey! You found this booklet interesting? Support Converting Colors with the new Membership Option!

The pro membership hides all ads, plus gives you double the colors in the color bucket, and more awesome pro features!

[Learn more, Memberships starting at \\$2.50/m!](#)

**Follow me
on Twitter!**

@ConvertingColor