

Converting Colors

Decimal(15548512)

Have a look what the booklet for
Decimal(15548512) contains.

Decimal(15548512)	3
<i>Conversions</i>	4
<i>Details</i>	6
<i>Harmonies</i>	11
<i>Previews</i>	23
<i>Color Blindness Simulation</i>	26
<i>CSS Examples</i>	29

Color

Decimal(15548512)

Conversions

Conversions Part 1

Format	Color
Hex	ED4060
RGB	237, 64, 96
RGB Percent	93%, 25%, 38%
CMY	0.0706, 0.7490, 0.6235
CMYK	0.00, 0.73, 0.59, 0.07
HSL	349°, 83%, 59%
HSV	349°, 73%, 93%
XYZ	38.8698, 22.5158, 13.3637
YIQ	119.3750, 92.8360, 46.6280

Conversions

Conversions Part 2

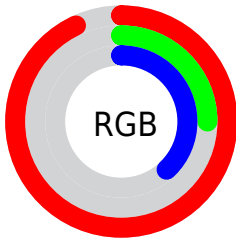
Format	Color
RYB	237, 64, 96
Decimal	15548512
CIELab	54.57, 66.95, 22.28
CIElCh	55, 70.560, 18.407
Yxy	22.5158, 0.5200, 0.3012
Android (android.graphics.Color)	4293738592 (0xFFED4060)
YUV	119.3750, -11.5239, 103.1571
Hunter-Lab	47.4509, 63.1807, 16.5177

Details

The Decimal color **15548512** is a dark color, and the websafe version is hex **FF3366**. The color can be described as middle muted rose. A complement of this color would be **4255181**, and the grayscale version is **7829367**.

A 20% lighter version of the original color is **16743570**, and **11403314** is the 20% darker color. If you saturate the color by 10%, you get **15542349**, and if you desaturate by 10%, it is **15554675**.

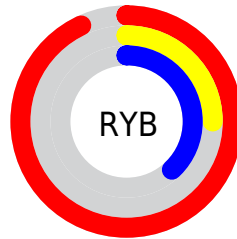
Distribution



Red (93%)

Green (25%)

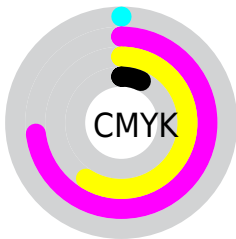
Blue (38%)



Red (93%)

Yellow (25%)

Blue (38%)

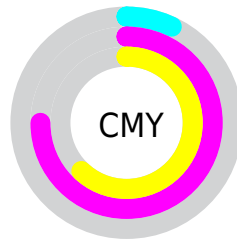


Cyan (0%)

Magenta (73%)

Yellow (59%)

Black (7%)



Cyan (7%)

Magenta (75%)

Yellow (62%)

Brightness & Saturation Gradients

These gradients show how the Decimal color 15548512 changes by changing the brightness by 10 percent. The first figure shows a shift by +10% for each color and the second figure -10%.

Similar to the brightness gradients but the following saturation gradients show a change of the Decimal color 15548512 by changing the saturation by 10% instead.

 15548512

 15548512

16777215

 13441608

 16743570

 11403314

 16751021

 9371678

 16758472

 7405574

 16766180

 5373954

 16773631

 3473410

 65536

 0

 15548512

 15548512

 15542349

 15554675

 15536441

 15560583

 15532076

 15566746

 15572909

 15579073

 15584980

 15591143

 15597307

 15597567

Harmonies

Analogous

The Analogous color harmony consists of three colors that are next to each other on the color wheel.



14893469



15548512



14244646

Triad

The Triadic color harmony groups three colors that are evenly spaced from another and form a triangle on the color wheel.



15548512



2332456



37371

Complementary

The Complementary color scheme is a pair of colors which are on the opposite of each other on the color wheel.



15548512



4255181

Split Complementary

Split-complementary colors differ from the complementary color scheme. The scheme consists of three colors, the original color and two neighbors of the complement color.



39901



15548512



40040

Square

The Square scheme is like the rectangle color scheme, but the four colors are evenly spaced on the color wheel.



15548512



8030976



40615



4423159

Rectangle

The Rectangle color scheme consists of four colors that form a rectangle on the color wheel.



15548512



12611328



40615



38388

Sweetspot

The Sweet Spot groups the original color and five complimentary colors.



15548512



16762833



13254893



8412772



0



8421504

Same Dimension

The Same Dimension uses a secret algorithm to generate beautiful new colors.



15548512



16719688



15561792



7694956



11862049



3538954

Inverse Universe

The Inverse Universe completely reimagines the original color for something new.



15548512



16719688



4241901



7694956



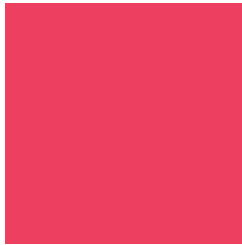
11862049



3538954

Previews

White Background



This preview shows how the Decimal color 15548512 looks on a white background.

Color Contrast Check

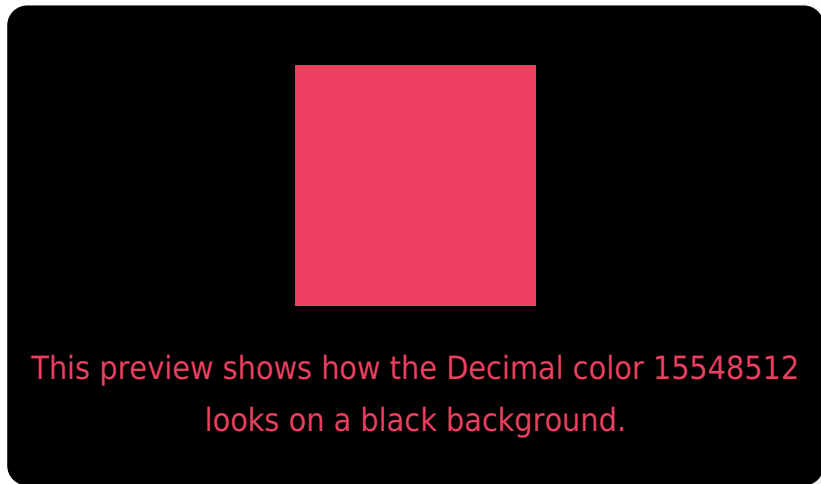
Large Text (above 18pt) WCAG AA ✓ Pass

Any Text WCAG AA × Fail

Large Text (above 18pt) WCAG AAA × Fail

Any Text WCAG AAA × Fail

Black Background



Color Contrast Check

Large Text (above 18pt) WCAG AA ✓ Pass

Any Text WCAG AA ✓ Pass

Large Text (above 18pt) WCAG AAA ✓ Pass

Any Text WCAG AAA × Fail

If you want to check with other color combinations, try the [Color Contrast Checker](#).

Decimal 15548512 Background



This preview shows how black text looks on a background with the Decimal color 15548512.

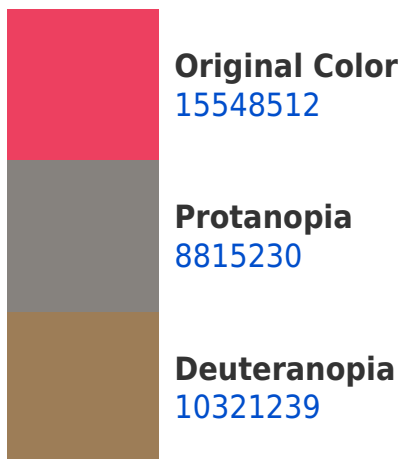


This preview shows how white text looks on a background with the Decimal color 15548512.

Color Blindness Simulation

Color vision deficiency is a very complex topic, and I could not describe the different causes any better than Wikipedia does, so if you want to learn more, you should check out their [article about color blindness](#).

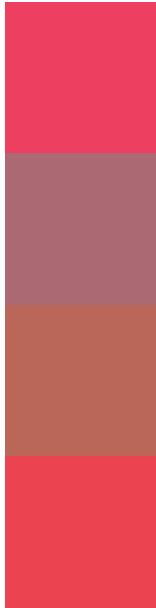
Dichromacy





Tritanopia
15484232

Trichromacy



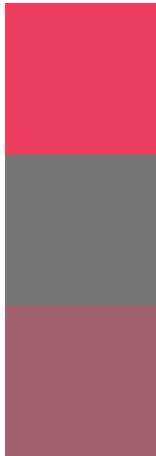
Original Color
15548512

Protanomaly
11233907

Deuteranomaly
12216154

Tritanomaly
15483729

Monochromacy



Original Color
15548512

Achromatopsia
7829367

Achromatomaly
10642287

CSS Examples

Text

The CSS property to change the color of the text to Decimal 15548512 is called "color". The color property can be set on classes, ids or directly on the HTML element.

This example shows how text in the color #ED4060 looks like.

```
.text, #text, p{  
    color:#ED4060  
}
```

If you want to add a text shadow in that color use the text-shadow property, you can generate a text shadow directly with our [CSS Text Shadow Generator](#).

Here you see how black text with a 4 pixel #ED4060 colored shadow looks like.

```
.shadow{ text-shadow: 4px 4px 2px #ED4060
}
```

Border

The CSS property to change the border of an element to Decimal 15548512 is called "border". The border property can be set on classes, ids or directly on the HTML element.

This example shows the color as border, it can be applied via the CSS property "border" or "border-color".

```
.border, #border, table{ border:4px solid
#ED4060 }
```

If only the border color should be changed use the property `border-color`.

```
.border{ border-color:#ED4060 }
```

If you want to add a box shadow in that color use:

Here you see how a box with a 4 pixel #ED4060 colored shadow looks like.

```
.boxshadow{ -moz-box-shadow:4px 4px 4px  
4px #ED4060; -webkit-box-shadow:4px 4px  
4px 4px #ED4060; box-shadow:4px 4px 4px  
4px #ED4060 }
```

Background

The CSS property to change the background color of an element to Decimal 15548512 is called "background". The background property can be set on classes, ids or directly on the HTML element.

```
.background, #background, body{  
background:#ED4060 }
```

If only the background color should be changed can be used:

```
.background{ background-color:#ED4060 }
```

This example shows the color as background, it is applied via the CSS property "background".

To optimize and compress your CSS code, you can use our [online CSS compressor and optimizer](#) based on csstidy. If you want to create a linear or radial gradient as background or border, check our [CSS Gradient Generator](#).

Hey! You found this booklet interesting? Support Converting Colors with the new Membership Option!

The pro membership hides all ads, plus gives you double the colors in the color bucket, and more awesome pro features!

[Learn more, Memberships starting at \\$2.50/m!](#)

**Follow me
on Twitter!**

@ConvertingColor