

Converting Colors

Decimal(15553401)

Have a look what the booklet for
Decimal(15553401) contains.

Decimal(15553401)	3
<i>Conversions</i>	4
<i>Details</i>	6
<i>Harmonies</i>	11
<i>Previews</i>	23
<i>Color Blindness Simulation</i>	26
<i>CSS Examples</i>	29

Color

Decimal(15553401)

Conversions

Conversions Part 1

Format	Color
Hex	ED5379
RGB	237, 83, 121
RGB Percent	93%, 33%, 47%
CMY	0.0706, 0.6745, 0.5255
CMYK	0.00, 0.65, 0.49, 0.07
HSL	345°, 81%, 63%
HSV	345°, 65%, 93%
XYZ	41.4695, 25.5715, 20.8393
YIQ	133.3780, 79.5860, 44.4660

Conversions

Conversions Part 2

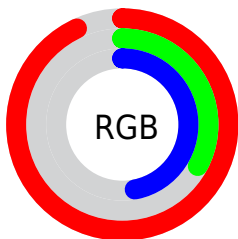
Format	Color
R_{YB}	237, 83, 121
Decimal	15553401
CIE _{Lab}	57.63, 61.87, 11.69
CIE _{LCh}	58, 62.960, 10.698
Yxy	25.5715, 0.4719, 0.2910
Android (android.graphics.Color)	4293743481 (0xFFED5379)
YUV	133.3780, -6.1024, 90.8765
Hunter-Lab	50.5683, 57.8879, 10.9643

Details

The Decimal color **15553401** is a dark color, and the websafe version is hex **FF6699**. The color can be described as middle muted rose. A complement of this color would be **5500359**, and the grayscale version is **8750469**.

A 20% lighter version of the original color is **16747693**, and **11536969** is the 20% darker color. If you saturate the color by 10%, you get **15547239**, and if you desaturate by 10%, it is **15559563**.

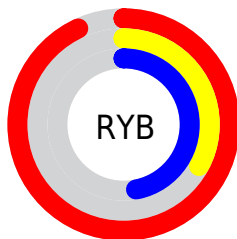
Distribution



Red (93%)

Green (33%)

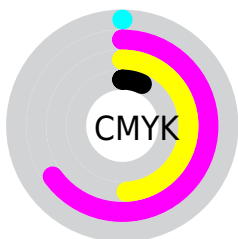
Blue (47%)



Red (93%)

Yellow (33%)

Blue (47%)

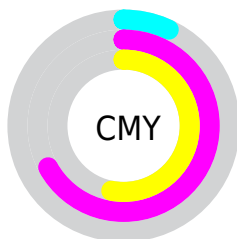


Cyan (0%)

Magenta (65%)

Yellow (49%)

Black (7%)



Cyan (7%)

Magenta (67%)

Yellow (53%)

Brightness & Saturation Gradients

These gradients show how the Decimal color 15553401 changes by changing the brightness by 10 percent. The first figure shows a shift by +10% for each color and the second figure -10%.

Similar to the brightness gradients but the following saturation gradients show a change of the Decimal color 15553401 by changing the saturation by 10% instead.

 15553401

 15553401

16777215

 13514080

 16747693

 11536969

 16755144

 9568307

 16762596

 7602206

 16770047

 5701636

 3866626

 1310720

 0

 15553401

 15553401

 15547239

 15559563

 15541333

 15565469

 15535171

 15571631

 15532090

 15577792

 15583698

 15589860

 15596022

 15597567

Harmonies

Analogous

The Analogous color harmony consists of three colors that are next to each other on the color wheel.



14375856



15553401



14836549

Triad

The Triadic color harmony groups three colors that are evenly spaced from another and form a triangle on the color wheel.



15553401



5675823



39666

Complementary

The Complementary color scheme is a pair of colors which are on the opposite of each other on the color wheel.



15553401



5500359

Split Complementary

Split-complementary colors differ from the complementary color scheme. The scheme consists of three colors, the original color and two neighbors of the complement color.



41681



15553401



41572

Square

The Square scheme is like the rectangle color scheme, but the four colors are evenly spaced on the color wheel.



15553401



9670144



42141



3115767

Rectangle

The Rectangle color scheme consists of four colors that form a rectangle on the color wheel.



15553401



13595430



42141



40682

Sweetspot

The Sweet Spot groups the original color and five complimentary colors.



15553401



16764891



12997613



8413801



0



8421504

Same Dimension

The Same Dimension uses a secret algorithm to generate beautiful new colors.



15553401



16726121



15563091



7694956



11862061



3538957

Inverse Universe

The Inverse Universe completely reimagines the original color for something new.



15553401



16726121



5490413



7694956



11862061



3538957

Previews

White Background



This preview shows how the Decimal color 15553401 looks on a white background.

Color Contrast Check

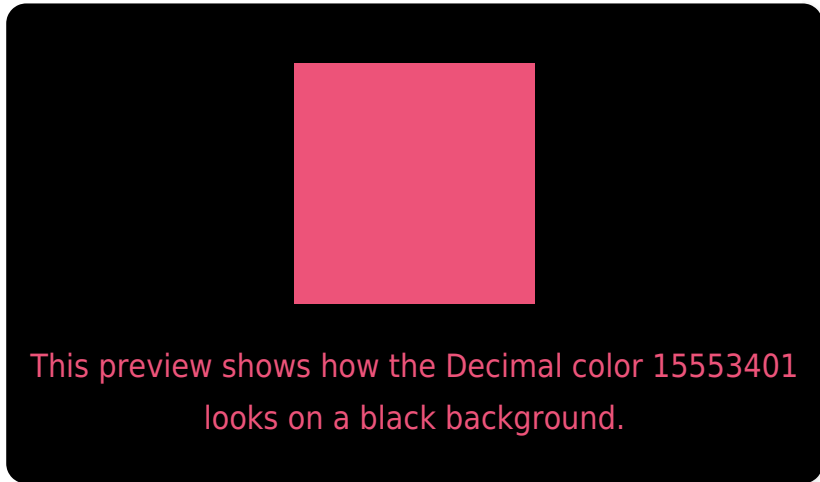
Large Text (above 18pt) WCAG AA ✓ Pass

Any Text WCAG AA × Fail

Large Text (above 18pt) WCAG AAA × Fail

Any Text WCAG AAA × Fail

Black Background



Color Contrast Check

Large Text (above 18pt) WCAG AA ✓ Pass

Any Text WCAG AA ✓ Pass

Large Text (above 18pt) WCAG AAA ✓ Pass

Any Text WCAG AAA × Fail

If you want to check with other color combinations, try the [Color Contrast Checker](#).

Decimal 15553401 Background



This preview shows how black text looks on a background with the Decimal color 15553401.



This preview shows how white text looks on a background with the Decimal color 15553401.

Color Blindness Simulation

Color vision deficiency is a very complex topic, and I could not describe the different causes any better than Wikipedia does, so if you want to learn more, you should check out their [article about color blindness](#).


Dichromacy



Original Color
15553401

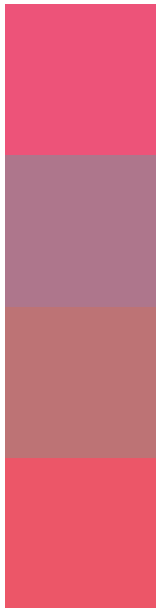
Protanopia
9079447

Deuteranopia
10585458



Tritanopia
15423582

Trichromacy



Original Color
15553401

Protanomaly
11433612

Deuteranomaly
12415861

Tritanomaly
15488616

Monochromacy



Original Color
15553401

Achromatopsia
8750469

Achromatomaly
11236225

CSS Examples

Text

The CSS property to change the color of the text to Decimal 15553401 is called "color". The color property can be set on classes, ids or directly on the HTML element.

This example shows how text in the color #ED5379 looks like.

```
.text, #text, p{  
  color:#ED5379  
}
```

If you want to add a text shadow in that color use the text-shadow property, you can generate a text shadow directly with our [CSS Text Shadow Generator](#).

Here you see how black text with a 4 pixel #ED5379 colored shadow looks like.

```
.shadow{ text-shadow: 4px 4px 2px #ED5379
}
```

Border

The CSS property to change the border of an element to Decimal 15553401 is called "border". The border property can be set on classes, ids or directly on the HTML element.

This example shows the color as border, it can be applied via the CSS property "border" or "border-color".

```
.border, #border, table{ border:4px solid
#ED5379 }
```

If only the border color should be changed use the property `border-color`.

```
.border{ border-color:#ED5379 }
```

If you want to add a box shadow in that color use:

Here you see how a box with a 4 pixel #ED5379 colored shadow looks like.

```
.boxshadow{ -moz-box-shadow:4px 4px 4px  
4px #ED5379; -webkit-box-shadow:4px 4px  
4px 4px #ED5379; box-shadow:4px 4px 4px  
4px #ED5379 }
```

Background

The CSS property to change the background color of an element to Decimal 15553401 is called "background". The background property can be set on classes, ids or directly on the HTML element.

```
.background, #background, body{  
background:#ED5379 }
```

If only the background color should be changed can be used:

```
.background{ background-color:#ED5379 }
```

This example shows the color as background, it is applied via the CSS property "background".

To optimize and compress your CSS code, you can use our [online CSS compressor and optimizer](#) based on csstidy. If you want to create a linear or radial gradient as background or border, check our [CSS Gradient Generator](#).

Hey! You found this booklet interesting? Support Converting Colors with the new Membership Option!

The pro membership hides all ads, plus gives you double the colors in the color bucket, and more awesome pro features!

[Learn more, Memberships starting at \\$2.50/m!](#)

**Follow me
on Twitter!**

@ConvertingColor