

Converting Colors

Decimal(15562135)

Have a look what the booklet for
Decimal(15562135) contains.

Decimal(15562135)	3
<i>Conversions</i>	4
<i>Details</i>	6
<i>Harmonies</i>	11
<i>Previews</i>	23
<i>Color Blindness Simulation</i>	26
<i>CSS Examples</i>	29

Color

Decimal(15562135)

Conversions

Conversions Part 1

Format	Color
Hex	ED7597
RGB	237, 117, 151
RGB Percent	93%, 46%, 59%
CMY	0.0706, 0.5412, 0.4078
CMYK	0.00, 0.51, 0.36, 0.07
HSL	343°, 77%, 69%
HSV	343°, 51%, 93%
XYZ	46.8723, 32.9615, 33.1699
YIQ	156.7560, 60.6060, 36.0140

Conversions

Conversions Part 2

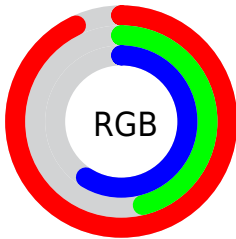
Format	Color
R _Y B	237, 117, 151
Decimal	15562135
CIE Lab	64.13, 49.64, 3.58
CIE LCh	64, 49.772, 4.127
Yxy	32.9615, 0.4148, 0.2917
Android (android.graphics.Color)	4293752215 (0xFFED7597)
YUV	156.7560, -2.8377, 70.3740
Hunter-Lab	57.4121, 45.2595, 5.9336

Details

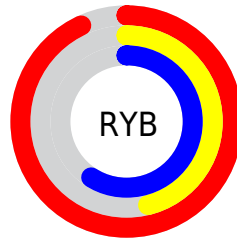
The Decimal color **15562135** is a light color, and the websafe version is hex **FF6699**. A complement of this color would be **7728587**, and the grayscale version is **10329501**.

A 20% lighter version of the original color is **16755917**, and **11681636** is the 20% darker color. If you saturate the color by 10%, you get **15555974**, and if you desaturate by 10%, it is **15568296**.

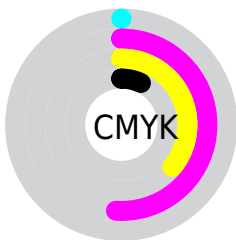
Distribution



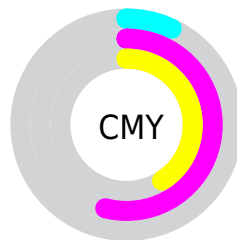
- Red (93%)
- Green (46%)
- Blue (59%)



- Red (93%)
- Yellow (46%)
- Blue (59%)



- Cyan (0%)
- Magenta (51%)
- Yellow (36%)
- Black (7%)



- Cyan (7%)
- Magenta (54%)
- Yellow (41%)

Brightness & Saturation Gradients

These gradients show how the Decimal color 15562135 changes by changing the brightness by 10 percent. The first figure shows a shift by +10% for each color and the second figure -10%.

Similar to the brightness gradients but the following saturation gradients show a change of the Decimal color 15562135 by changing the saturation by 10% instead.

 15562135

 15562135

16777215

 13589117


 16755917

 11681636

 16763113

 9773645

 16770559

 7864374

 6029345

 4325385

 2490369

 0

 15562135

 15562135

 15555974

 15568296

 15550069

 15574201

 15543908

 15580362

 15537747

 15586523

 15532099

 15592428

 15597565

 15597567

Harmonies

Analogous

The Analogous color harmony consists of three colors that are next to each other on the color wheel.



14122435



15562135



15367276

Triad

The Triadic color harmony groups three colors that are evenly spaced from another and form a triangle on the color wheel.



15562135



8496975



43755

Complementary

The Complementary color scheme is a pair of colors which are on the opposite of each other on the color wheel.



15562135



7728587

Split Complementary

Split-complementary colors differ from the complementary color scheme. The scheme consists of three colors, the original color and two neighbors of the complement color.



45260



15562135



4435827

Square

The Square scheme is like the rectangle color scheme, but the four colors are evenly spaced on the color wheel.



15562135



11508543



45728



5611252

Rectangle

The Rectangle color scheme consists of four colors that form a rectangle on the color wheel.



15562135



14517588



45728



44514

Sweetspot

The Sweet Spot groups the original color and five complimentary colors.



15562135



16767460



13333997



8415599



0



8421504

Same Dimension

The Same Dimension uses a secret algorithm to generate beautiful new colors.



15562135



16737168



15568757



7694957



11862067



3538959

Inverse Universe

The Inverse Universe completely reimagines the original color for something new.



15562135



16737168



7721965



7694957



11862067



3538959

Previews

White Background



This preview shows how the Decimal color 15562135 looks on a white background.

Color Contrast Check

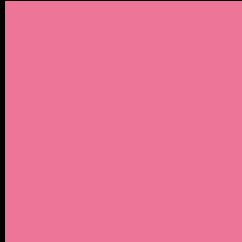
Large Text (above 18pt) WCAG AA × Fail

Any Text WCAG AA × Fail

Large Text (above 18pt) WCAG AAA × Fail

Any Text WCAG AAA × Fail

Black Background



This preview shows how the Decimal color 15562135 looks on a black background.

Color Contrast Check

Large Text (above 18pt) WCAG AA ✓ Pass

Any Text WCAG AA ✓ Pass

Large Text (above 18pt) WCAG AAA ✓ Pass

Any Text WCAG AAA ✓ Pass

If you want to check with other color combinations, try the [Color Contrast Checker](#).

Decimal 15562135 Background



This preview shows how black text looks on a background with the Decimal color 15562135.



This preview shows how white text looks on a background with the Decimal color 15562135.

Color Blindness Simulation

Color vision deficiency is a very complex topic, and I could not describe the different causes any better than Wikipedia does, so if you want to learn more, you should check out their [article about color blindness](#).


Dichromacy



Original Color
15562135

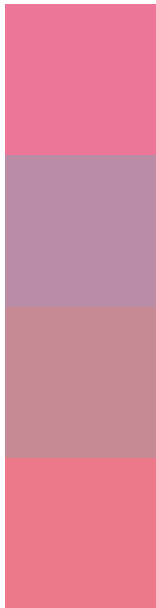
Protanopia
10132397

Deuteranopia
11507346



Tritanopia
15432066

Trichromacy



Original Color
15562135

Protanomaly
12094885

Deuteranomaly
13011604

Tritanomaly
15497354

Monochromacy



Original Color
15562135

Achromatopsia
10329501

Achromatomaly
12226203

CSS Examples

Text

The CSS property to change the color of the text to Decimal 15562135 is called "color". The color property can be set on classes, ids or directly on the HTML element.

This example shows how text in the color #ED7597 looks like.

```
.text, #text, p{  
    color:#ED7597  
}
```

If you want to add a text shadow in that color use the text-shadow property, you can generate a text shadow directly with our [CSS Text Shadow Generator](#).

Here you see how black text with a 4 pixel #ED7597 colored shadow looks like.

```
.shadow{ text-shadow: 4px 4px 2px #ED7597
}
```

Border

The CSS property to change the border of an element to Decimal 15562135 is called "border". The border property can be set on classes, ids or directly on the HTML element.

This example shows the color as border, it can be applied via the CSS property "border" or "border-color".

```
.border, #border, table{ border:4px solid
#ED7597 }
```

If only the border color should be changed use the property `border-color`.

```
.border{ border-color:#ED7597 }
```

If you want to add a box shadow in that color use:

Here you see how a box with a 4 pixel #ED7597 colored shadow looks like.

```
.boxshadow{ -moz-box-shadow:4px 4px 4px  
4px #ED7597; -webkit-box-shadow:4px 4px  
4px 4px #ED7597; box-shadow:4px 4px 4px  
4px #ED7597 }
```

Background

The CSS property to change the background color of an element to Decimal 15562135 is called "background". The background property can be set on classes, ids or directly on the HTML element.

```
.background, #background, body{  
background:#ED7597 }
```

If only the background color should be changed can be used:

```
.background{ background-color:#ED7597 }
```

This example shows the color as background, it is applied via the CSS property "background".

To optimize and compress your CSS code, you can use our [online CSS compressor and optimizer](#) based on csstidy. If you want to create a linear or radial gradient as background or border, check our [CSS Gradient Generator](#).

Hey! You found this booklet interesting? Support Converting Colors with the new Membership Option!

The pro membership hides all ads, plus gives you double the colors in the color bucket, and more awesome pro features!

[Learn more, Memberships starting at \\$2.50/m!](#)

**Follow me
on Twitter!**

@ConvertingColor