

Converting Colors

Decimal(15567251)

Have a look what the booklet for
Decimal(15567251) contains.

Decimal(15567251)	3
<i>Conversions</i>	4
<i>Details</i>	6
<i>Harmonies</i>	11
<i>Previews</i>	23
<i>Color Blindness Simulation</i>	26
<i>CSS Examples</i>	29

Color

Decimal(15567251)

Conversions

Conversions Part 1

Format	Color
Hex	ED8993
RGB	237, 137, 147
RGB Percent	93%, 54%, 58%
CMY	0.0706, 0.4627, 0.4235
CMYK	0.00, 0.42, 0.38, 0.07
HSL	354°, 74%, 73%
HSV	354°, 42%, 93%
XYZ	49.1372, 38.0024, 32.3492
YIQ	168.0400, 56.3900, 24.3100

Conversions

Conversions Part 2

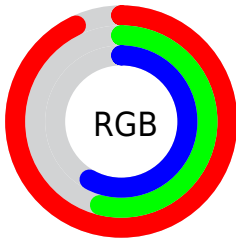
Format	Color
RYB	237, 137, 147
Decimal	15567251
CIELab	68.02, 39.13, 11.41
CIElCh	68, 40.757, 16.261
Yxy	38.0024, 0.4112, 0.3180
Android (android.graphics.Color)	4293757331 (0xFFED8993)
YUV	168.0400, -10.3727, 60.4779
Hunter-Lab	61.6461, 34.3989, 12.0395

Details

The Decimal color **15567251** is a light color, and the websafe version is hex **FF9999**. A complement of this color would be **9039331**, and the grayscale version is **11053224**.

A 20% lighter version of the original color is **16761033**, and **11687265** is the 20% darker color. If you saturate the color by 10%, you get **15561086**, and if you desaturate by 10%, it is **15573416**.

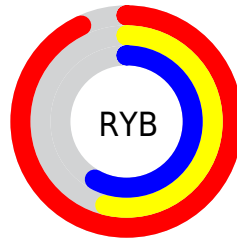
Distribution



Red (93%)

Green (54%)

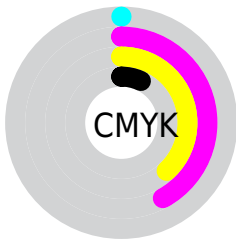
Blue (58%)



Red (93%)

Yellow (54%)

Blue (58%)

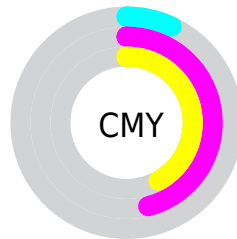


Cyan (0%)

Magenta (42%)

Yellow (38%)

Black (7%)



Cyan (7%)

Magenta (46%)

Yellow (42%)

Brightness & Saturation Gradients

These gradients show how the Decimal color 15567251 changes by changing the brightness by 10 percent. The first figure shows a shift by +10% for each color and the second figure -10%.

Similar to the brightness gradients but the following saturation gradients show a change of the Decimal color 15567251 by changing the saturation by 10% instead.

 15567251

 15567251

16777215

 13594489

 16761033

 11687265

 16768229

 9845577

 16775679

 8004147

 6160926

 4456452

 2818049

 0

 15567251

 15567251

 15561086

 15573416

 15555176

 15579326

 15549011

 15585491

 15542846

 15591656

 15536680

 15597566

 15532056

 15597567

Harmonies

Analogous

The Analogous color harmony consists of three colors that are next to each other on the color wheel.



14846648



15567251



14979442

Triad

The Triadic color harmony groups three colors that are evenly spaced from another and form a triangle on the color wheel.



15567251



8434545



4894445

Complementary

The Complementary color scheme is a pair of colors which are on the opposite of each other on the color wheel.



15567251



9039331

Split Complementary

Split-complementary colors differ from the complementary color scheme. The scheme consists of three colors, the original color and two neighbors of the complement color.



46810



15567251



5159059

Square

The Square scheme is like the rectangle color scheme, but the four colors are evenly spaced on the color wheel.



15567251



11119198



47545



9479148

Rectangle

The Rectangle color scheme consists of four colors that form a rectangle on the color wheel.



15567251



13998435



47545



2863848

Sweetspot

The Sweet Spot groups the original color and five complimentary colors.



15567251



16768737



14911981



8416109



0



8421504

Same Dimension

The Same Dimension uses a secret algorithm to generate beautiful new colors.



15567251



16743818



15577481



7694955



11862034



3538949

Inverse Universe

The Inverse Universe completely reimagines the original color for something new.



15567251



16743818



9029101



7694955



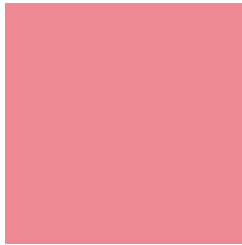
11862034



3538949

Previews

White Background



This preview shows how the Decimal color 15567251 looks on a white background.

Color Contrast Check

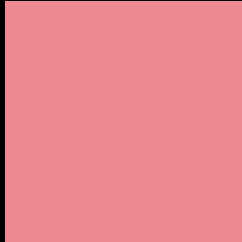
Large Text (above 18pt) WCAG AA × Fail

Any Text WCAG AA × Fail

Large Text (above 18pt) WCAG AAA × Fail

Any Text WCAG AAA × Fail

Black Background



This preview shows how the Decimal color 15567251 looks on a black background.

Color Contrast Check

Large Text (above 18pt) WCAG AA ✓ Pass

Any Text WCAG AA ✓ Pass

Large Text (above 18pt) WCAG AAA ✓ Pass

Any Text WCAG AAA ✓ Pass

If you want to check with other color combinations, try the [Color Contrast Checker](#).

Decimal 15567251 Background



This preview shows how black text looks on a background with the Decimal color 15567251.



This preview shows how white text looks on a background with the Decimal color 15567251.

Color Blindness Simulation

Color vision deficiency is a very complex topic, and I could not describe the different causes any better than Wikipedia does, so if you want to learn more, you should check out their [article about color blindness](#).


Dichromacy



Original Color
15567251

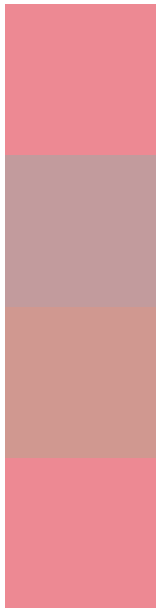
Protanopia
11183522

Deuteranopia
12558479



Tritanopia
15567251

Trichromacy



Original Color
15567251

Protanomaly
12753821

Deuteranomaly
13670544

Tritanomaly
15567251

Monochromacy



Original Color
15567251

Achromatopsia
11053224

Achromatomaly
12688800

CSS Examples

Text

The CSS property to change the color of the text to Decimal 15567251 is called "color". The color property can be set on classes, ids or directly on the HTML element.

This example shows how text in the color #ED8993 looks like.

```
.text, #text, p{  
    color:#ED8993  
}
```

If you want to add a text shadow in that color use the text-shadow property, you can generate a text shadow directly with our [CSS Text Shadow Generator](#).

Here you see how black text with a 4 pixel #ED8993 colored shadow looks like.

```
.shadow{ text-shadow: 4px 4px 2px #ED8993  
}
```

Border

The CSS property to change the border of an element to Decimal 15567251 is called "border". The border property can be set on classes, ids or directly on the HTML element.

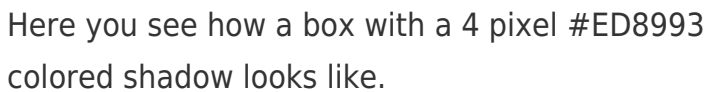
This example shows the color as border, it can be applied via the CSS property "border" or "border-color".

```
.border, #border, table{ border:4px solid  
#ED8993 }
```

If only the border color should be changed use the property `border-color`.

```
.border{ border-color:#ED8993 }
```

If you want to add a box shadow in that color use:



Here you see how a box with a 4 pixel `#ED8993` colored shadow looks like.

```
.boxshadow{ -moz-box-shadow:4px 4px 4px  
4px #ED8993; -webkit-box-shadow:4px 4px  
4px 4px #ED8993; box-shadow:4px 4px 4px  
4px #ED8993 }
```

Background

The CSS property to change the background color of an element to Decimal 15567251 is called "background". The background property can be set on classes, ids or directly on the HTML element.

```
.background, #background, body{  
background:#ED8993 }
```

If only the background color should be changed can be used:

```
.background{ background-color:#ED8993 }
```

This example shows the color as background, it is applied via the CSS property "background".

To optimize and compress your CSS code, you can use our [online CSS compressor and optimizer](#) based on csstidy. If you want to create a linear or radial gradient as background or border, check our [CSS Gradient Generator](#).

Hey! You found this booklet interesting? Support Converting Colors with the new Membership Option!

The pro membership hides all ads, plus gives you double the colors in the color bucket, and more awesome pro features!

[Learn more, Memberships starting at \\$2.50/m!](#)

**Follow me
on Twitter!**

@ConvertingColor