

Converting Colors

Decimal(15572136)

Have a look what the booklet for
Decimal(15572136) contains.

Decimal(15572136)	3
<i>Conversions</i>	4
<i>Details</i>	6
<i>Harmonies</i>	11
<i>Previews</i>	23
<i>Color Blindness Simulation</i>	26
<i>CSS Examples</i>	29

Color

Decimal(15572136)

Conversions

Conversions Part 1

Format	Color
Hex	ED9CA8
RGB	237, 156, 168
RGB Percent	93%, 61%, 66%
CMY	0.0706, 0.3882, 0.3412
CMYK	0.00, 0.34, 0.29, 0.07
HSL	351°, 69%, 77%
HSV	351°, 34%, 93%
XYZ	53.8814, 44.6086, 42.8163
YIQ	181.5870, 44.4240, 20.9040

Conversions

Conversions Part 2

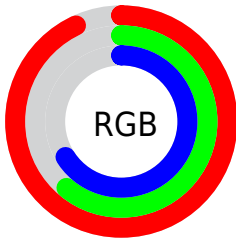
Format	Color
R _Y B	237, 156, 168
Decimal	15572136
CIE Lab	72.63, 31.77, 6.29
CIE LCh	73, 32.389, 11.200
Yxy	44.6086, 0.3813, 0.3157
Android (android.graphics.Color)	4293762216 (0xFFED9CA8)
YUV	181.5870, -6.6984, 48.5972
Hunter-Lab	66.7897, 27.1198, 8.7443

Details

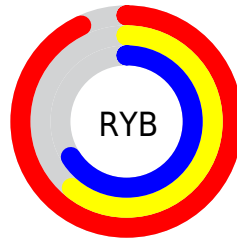
The Decimal color **15572136** is a light color, and the websafe version is hex **FF9999**. A complement of this color would be **10284513**, and the grayscale version is **11974326**.

A 20% lighter version of the original color is **16765919**, and **11757684** is the 20% darker color. If you saturate the color by 10%, you get **15565972**, and if you desaturate by 10%, it is **15578300**.

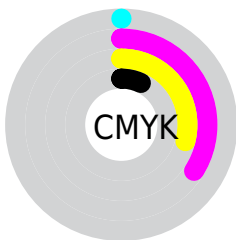
Distribution



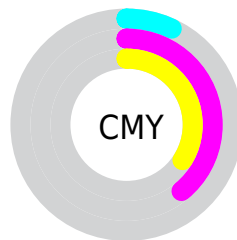
- Red (93%)
- Green (61%)
- Blue (66%)



- Red (93%)
- Yellow (61%)
- Blue (66%)



- Cyan (0%)
- Magenta (34%)
- Yellow (29%)
- Black (7%)



- Cyan (7%)
- Magenta (39%)
- Yellow (34%)

Brightness & Saturation Gradients

These gradients show how the Decimal color 15572136 changes by changing the brightness by 10 percent. The first figure shows a shift by +10% for each color and the second figure -10%.

Similar to the brightness gradients but the following saturation gradients show a change of the Decimal color 15572136 by changing the saturation by 10% instead.


 15572136

 15572136

16777215

 13664654

 16765919

 11757684

 16773372

 9916252

 8140356

 6364718

 4654105

 3211264

 0

 15572136

 15572136

 15565972

 15578300

 15560064

 15584208

 15553899

 15590373

 15547735

 15596537

 15541827

 15597567

 15535663

 15532067

Harmonies

Analogous

The Analogous color harmony consists of three colors that are next to each other on the color wheel.



14786246



15572136



15311245

Triad

The Triadic color harmony groups three colors that are evenly spaced from another and form a triangle on the color wheel.



15572136



10206341



7322346

Complementary

The Complementary color scheme is a pair of colors which are on the opposite of each other on the color wheel.



15572136



10284513

Split Complementary

Split-complementary colors differ from the complementary color scheme. The scheme consists of three colors, the original color and two neighbors of the complement color.



5357784



15572136



7913886

Square

The Square scheme is like the rectangle color scheme, but the four colors are evenly spaced on the color wheel.



15572136



12366968



5882813



10269164

Rectangle

The Rectangle color scheme consists of four colors that form a rectangle on the color wheel.



15572136



14591871



5882813



6471141

Sweetspot

The Sweet Spot groups the original color and five complimentary colors.



15572136



16770793



14785773



8417394



0



8421504

Same Dimension

The Same Dimension uses a secret algorithm to generate beautiful new colors.



15572136



16750246



15579292



7694955



11862043



3538952

Inverse Universe

The Inverse Universe completely reimagines the original color for something new.



15572136



16750246



10277357



7694955



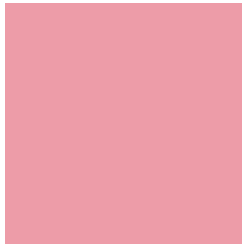
11862043



3538952

Previews

White Background



This preview shows how the Decimal color 15572136 looks on a white background.

Color Contrast Check

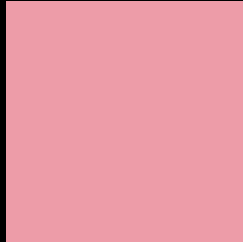
Large Text (above 18pt) WCAG AA × Fail

Any Text WCAG AA × Fail

Large Text (above 18pt) WCAG AAA × Fail

Any Text WCAG AAA × Fail

Black Background



This preview shows how the Decimal color 15572136 looks on a black background.

Color Contrast Check

Large Text (above 18pt) WCAG AA ✓ Pass

Any Text WCAG AA ✓ Pass

Large Text (above 18pt) WCAG AAA ✓ Pass

Any Text WCAG AAA ✓ Pass

If you want to check with other color combinations, try the [Color Contrast Checker](#).

Decimal 15572136 Background



This preview shows how black text looks on a background with the Decimal color 15572136.

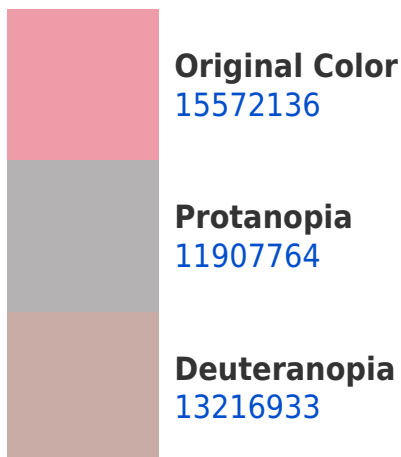



This preview shows how white text looks on a background with the Decimal color 15572136.

Color Blindness Simulation

Color vision deficiency is a very complex topic, and I could not describe the different causes any better than Wikipedia does, so if you want to learn more, you should check out their [article about color blindness](#).

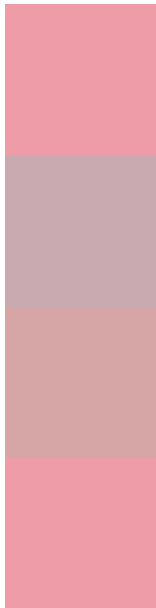
Dichromacy





Tritanopia
15572136

Trichromacy



Original Color
15572136

Protanomaly
13216432

Deuteranomaly
14067366

Tritanomaly
15572136

Monochromacy



Original Color
15572136

Achromatopsia
11974326

Achromatomaly
13282737

CSS Examples

Text

The CSS property to change the color of the text to Decimal 15572136 is called "color". The color property can be set on classes, ids or directly on the HTML element.

This example shows how text in the color #ED9CA8 looks like.

```
.text, #text, p{  
    color:#ED9CA8  
}
```

If you want to add a text shadow in that color use the text-shadow property, you can generate a text shadow directly with our [CSS Text Shadow Generator](#).

Here you see how black text with a 4 pixel #ED9CA8 colored shadow looks like.

```
.shadow{ text-shadow: 4px 4px 2px #ED9CA8  
}
```

Border

The CSS property to change the border of an element to Decimal 15572136 is called "border". The border property can be set on classes, ids or directly on the HTML element.

This example shows the color as border, it can be applied via the CSS property "border" or "border-color".

```
.border, #border, table{ border:4px solid  
#ED9CA8 }
```

If only the border color should be changed use the property `border-color`.

```
.border{ border-color:#ED9CA8 }
```

If you want to add a box shadow in that color use:

Here you see how a box with a 4 pixel #ED9CA8 colored shadow looks like.

```
.boxshadow{ -moz-box-shadow:4px 4px 4px  
4px #ED9CA8; -webkit-box-shadow:4px 4px  
4px 4px #ED9CA8; box-shadow:4px 4px 4px  
4px #ED9CA8 }
```

Background

The CSS property to change the background color of an element to Decimal 15572136 is called "background". The background property can be set on classes, ids or directly on the HTML element.

```
.background, #background, body{  
background:#ED9CA8 }
```

If only the background color should be changed can be used:

```
.background{ background-color:#ED9CA8 }
```

This example shows the color as background, it is applied via the CSS property "background".

To optimize and compress your CSS code, you can use our [online CSS compressor and optimizer](#) based on csstidy. If you want to create a linear or radial gradient as background or border, check our [CSS Gradient Generator](#).

Hey! You found this booklet interesting? Support Converting Colors with the new Membership Option!

The pro membership hides all ads, plus gives you double the colors in the color bucket, and more awesome pro features!

[Learn more, Memberships starting at \\$2.50/m!](#)

**Follow me
on Twitter!**

@ConvertingColor