

Converting Colors

Decimal(15576516)

Have a look what the booklet for
Decimal(15576516) contains.

Decimal(15576516)	3
<i>Conversions</i>	4
<i>Details</i>	6
<i>Harmonies</i>	11
<i>Previews</i>	23
<i>Color Blindness Simulation</i>	26
<i>CSS Examples</i>	29

Color

Decimal(15576516)

Conversions

Conversions Part 1

Format	Color
Hex	EDADC4
RGB	237, 173, 196
RGB Percent	93%, 68%, 77%
CMY	0.0706, 0.3216, 0.2314
CMYK	0.00, 0.27, 0.17, 0.07
HSL	338°, 64%, 80%
HSV	338°, 27%, 93%
XYZ	59.8324, 51.8772, 59.0843
YIQ	194.7580, 30.7610, 20.7210

Conversions

Conversions Part 2

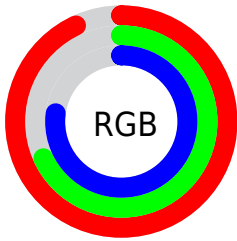
Format	Color
R_{YB}	237, 173, 196
Decimal	15576516
CIE _{Lab}	77.21, 26.76, -2.43
CIE _{LCh}	77, 26.872, 354.817
Yxy	51.8772, 0.3503, 0.3037
Android (android.graphics.Color)	4293766596 (0xFFEDADC4)
YUV	194.7580, 0.6123, 37.0462
Hunter-Lab	72.0258, 22.2362, 1.7812

Details

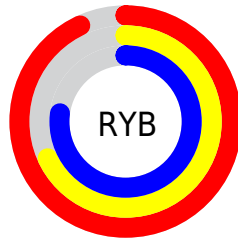
The Decimal color **15576516** is a light color, and the websafe version is hex **CC9999**. A complement of this color would be **11398614**, and the grayscale version is **12829635**.

A 20% lighter version of the original color is **16770557**, and **11827342** is the 20% darker color. If you saturate the color by 10%, you get **15570357**, and if you desaturate by 10%, it is **15582675**.

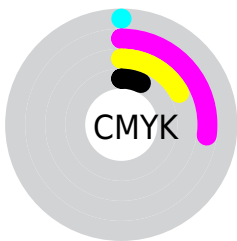
Distribution



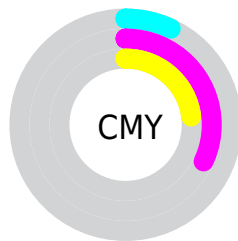
- Red (93%)
- Green (68%)
- Blue (77%)



- Red (93%)
- Yellow (68%)
- Blue (77%)



- Cyan (0%)
- Magenta (27%)
- Yellow (17%)
- Black (7%)



- Cyan (7%)
- Magenta (32%)
- Yellow (23%)

Brightness & Saturation Gradients

These gradients show how the Decimal color 15576516 changes by changing the brightness by 10 percent. The first figure shows a shift by +10% for each color and the second figure -10%.

Similar to the brightness gradients but the following saturation gradients show a change of the Decimal color 15576516 by changing the saturation by 10% instead.

 15576516

 15576516

16777215

 13669033

 16770557

 11827342

 10051445

 8275548

 6565701

 4921391

 3342618

 1835009

 0

 15576516

 15576516

 15570357

 15582675

 15564454

 15588578

 15558294

 15594738

 15552135

 15597567

 15546232

 15540073

 15533914

 15532117

Harmonies

Analogous

The Analogous color harmony consists of three colors that are next to each other on the color wheel.



14398172



15576516



15838891

Triad

The Triadic color harmony groups three colors that are evenly spaced from another and form a triangle on the color wheel.



15576516



12305297



8309223

Complementary

The Complementary color scheme is a pair of colors which are on the opposite of each other on the color wheel.



15576516



11398614

Split Complementary

Split-complementary colors differ from the complementary color scheme. The scheme consists of three colors, the original color and two neighbors of the complement color.



7785683



15576516



10471841

Square

The Square scheme is like the rectangle color scheme, but the four colors are evenly spaced on the color wheel.



15576516



14007437



8768697



10142448

Rectangle

The Rectangle color scheme consists of four colors that form a rectangle on the color wheel.



15576516



15577501



8768697



7981793

Sweetspot

The Sweet Spot groups the original color and five complimentary colors.



15576516



16772082



14069229



8418167



0



8421504

Same Dimension

The Same Dimension uses a secret algorithm to generate beautiful new colors.



15576516



16756171



15578797



7694958



11862081



3538963

Inverse Universe

The Inverse Universe completely reimagines the original color for something new.



15576516



16756171



11396333



7694958



11862081



3538963

Previews

White Background



This preview shows how the Decimal color 15576516 looks on a white background.

Color Contrast Check

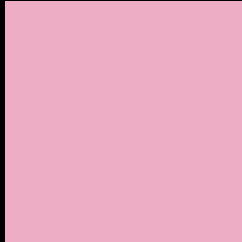
Large Text (above 18pt) WCAG AA × Fail

Any Text WCAG AA × Fail

Large Text (above 18pt) WCAG AAA × Fail

Any Text WCAG AAA × Fail

Black Background



This preview shows how the Decimal color 15576516 looks on a black background.

Color Contrast Check

Large Text (above 18pt) WCAG AA ✓ Pass

Any Text WCAG AA ✓ Pass

Large Text (above 18pt) WCAG AAA ✓ Pass

Any Text WCAG AAA ✓ Pass

If you want to check with other color combinations, try the [Color Contrast Checker](#).

Decimal 15576516 Background



This preview shows how black text looks on a background with the Decimal color 15576516.




This preview shows how white text looks on a background with the Decimal color 15576516.

Color Blindness Simulation

Color vision deficiency is a very complex topic, and I could not describe the different causes any better than Wikipedia does, so if you want to learn more, you should check out their [article about color blindness](#).

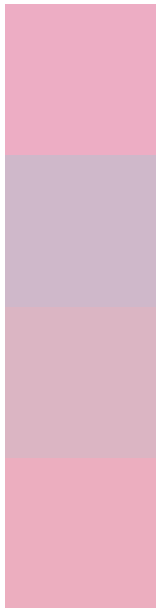
Dichromacy





Tritanopia
15511228

Trichromacy



Original Color
15576516

Protanomaly
13613258

Deuteranomaly
14398915

Tritanomaly
15511231

Monochromacy



Original Color
15576516

Achromatopsia
12829635

Achromatomaly
13810627

CSS Examples

Text

The CSS property to change the color of the text to Decimal 15576516 is called "color". The color property can be set on classes, ids or directly on the HTML element.

This example shows how text in the color #EDADC4 looks like.

```
.text, #text, p{  
    color:#EDADC4  
}
```

If you want to add a text shadow in that color use the text-shadow property, you can generate a text shadow directly with our [CSS Text Shadow Generator](#).

Here you see how black text with a 4 pixel #EDADC4 colored shadow looks like.

```
.shadow{ text-shadow: 4px 4px 2px #EDADC4
}
```

Border

The CSS property to change the border of an element to Decimal 15576516 is called "border". The border property can be set on classes, ids or directly on the HTML element.

This example shows the color as border, it can be applied via the CSS property "border" or "border-color".

```
.border, #border, table{ border:4px solid
#EDADC4 }
```

If only the border color should be changed use the property `border-color`.

```
.border{ border-color:#EDADC4 }
```

If you want to add a box shadow in that color use:

Here you see how a box with a 4 pixel #EDADC4 colored shadow looks like.

```
.boxshadow{ -moz-box-shadow:4px 4px 4px  
4px #EDADC4; -webkit-box-shadow:4px 4px  
4px 4px #EDADC4; box-shadow:4px 4px 4px  
4px #EDADC4 }
```

Background

The CSS property to change the background color of an element to Decimal 15576516 is called "background". The background property can be set on classes, ids or directly on the HTML element.

```
.background, #background, body{  
background:#EDADC4 }
```

If only the background color should be changed can be used:

```
.background{ background-color:#EDADC4 }
```

This example shows the color as background, it is applied via the CSS property "background".

To optimize and compress your CSS code, you can use our [online CSS compressor and optimizer](#) based on csstidy. If you want to create a linear or radial gradient as background or border, check our [CSS Gradient Generator](#).

Hey! You found this booklet interesting? Support Converting Colors with the new Membership Option!

The pro membership hides all ads, plus gives you double the colors in the color bucket, and more awesome pro features!

[Learn more, Memberships starting at \\$2.50/m!](#)

**Follow me
on Twitter!**

@ConvertingColor