

# Converting Colors

Decimal(15580640)

Have a look what the booklet for  
Decimal(15580640) contains.

<b>Decimal(15580640)</b> .....	3
<i><b>Conversions</b></i> .....	4
<i><b>Details</b></i> .....	6
<i><b>Harmonies</b></i> .....	11
<i><b>Previews</b></i> .....	23
<i><b>Color Blindness Simulation</b></i> .....	26
<i><b>CSS Examples</b></i> .....	29

# **Color**

**Decimal(15580640)**

# Conversions

## Conversions Part 1

<b>Format</b>	<b>Color</b>
Hex	EDBDE0
RGB	237, 189, 224
RGB Percent	93%, 74%, 88%
CMY	0.0706, 0.2588, 0.1216
CMYK	0.00, 0.20, 0.05, 0.07
HSL	316°, 57%, 84%
HSV	316°, 20%, 93%
XYZ	66.5772, 59.7815, 78.5510
YIQ	207.3420, 17.3730, 21.0610

# Conversions

## Conversions Part 2

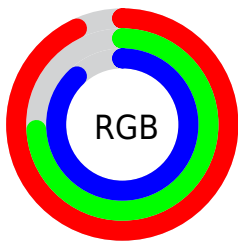
<b>Format</b>	<b>Color</b>
R <sub>Y</sub> B	237, 189, 224
Decimal	15580640
CIE Lab	81.72, 22.85, -10.89
CIE LCh	82, 25.311, 334.509
Yxy	59.7815, 0.3249, 0.2917
Android (android.graphics.Color)	4293770720 (0xFFEDBDE0)
YUV	207.3420, 8.2124, 26.0101
Hunter-Lab	77.3185, 18.3948, -6.1121

# Details

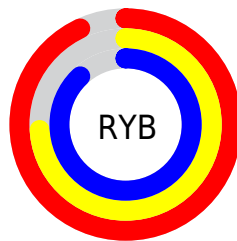
The Decimal color **15580640** is a light color, and the websafe version is hex **FFCCFF**. A complement of this color would be **12447178**, and the grayscale version is **13619151**.

A 20% lighter version of the original color is **16774655**, and **11896745** is the 20% darker color. If you saturate the color by 10%, you get **15574490**, and if you desaturate by 10%, it is **15586790**.

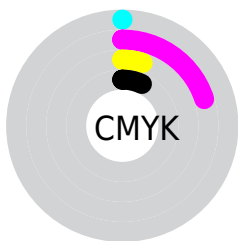
# Distribution



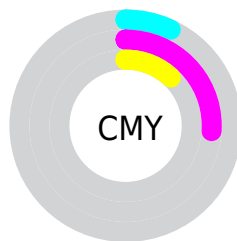
- Red (93%)
- Green (74%)
- Blue (88%)



- Red (93%)
- Yellow (74%)
- Blue (88%)



- Cyan (0%)
- Magenta (20%)
- Yellow (5%)
- Black (7%)



- Cyan (7%)
- Magenta (26%)
- Yellow (12%)

# Brightness & Saturation Gradients

These gradients show how the Decimal color 15580640 changes by changing the brightness by 10 percent. The first figure shows a shift by +10% for each color and the second figure -10%.

Similar to the brightness gradients but the following saturation gradients show a change of the Decimal color 15580640 by changing the saturation by 10% instead.



15580640

15580640

16777215

13738692

16774655

11896745

10120846

8344949

6700380

5056324

3543342

2228250

0

 15580640

 15580640

 15574490

 15586790

 15568595

 15592685

 15562445

 15597555

 15556294

 15597562

 15550400

 15597567

 15544249

 15538099

 15532205

# Harmonies

## Analogous

The Analogous color harmony consists of three colors that are next to each other on the color wheel.



13944050



15580640



16431816

# Triad

The Triadic color harmony groups three colors that are evenly spaced from another and form a triangle on the color wheel.



15580640



14273436



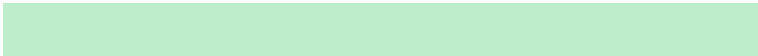
8968421

# Complementary

The Complementary color scheme is a pair of colors which are on the opposite of each other on the color wheel.



15580640



12447178

# Split Complementary

Split-complementary colors differ from the complementary color scheme. The scheme consists of three colors, the original color and two neighbors of the complement color.



9427406



15580640



12571300

# Square

The Square scheme is like the rectangle color scheme, but the four colors are evenly spaced on the color wheel.



15580640



15713185



10803126



9950197

# Rectangle

The Rectangle color scheme consists of four colors that form a rectangle on the color wheel.



15580640



16563129



10803126



8968414



# Sweetspot

The Sweet Spot groups the original color and five complimentary colors.



15580640



16773371



13286893



8419197



0



8421504



# Same Dimension

The Same Dimension uses a secret algorithm to generate beautiful new colors.



15580640



16761582



15580616



7694962



11862148



3538983



# Inverse Universe

The Inverse Universe completely reimagines the original color for something new.



15580640



16761582



12447202



7694962



11862148



3538983



# Previews

## White Background



This preview shows how the Decimal color 15580640 looks on a white background.

## Color Contrast Check

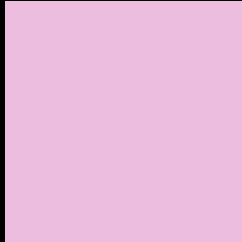
Large Text (above 18pt) WCAG AA × Fail

Any Text WCAG AA × Fail

Large Text (above 18pt) WCAG AAA × Fail

Any Text WCAG AAA × Fail

# Black Background



This preview shows how the Decimal color 15580640 looks on a black background.

## Color Contrast Check

Large Text (above 18pt) WCAG AA ✓ Pass

Any Text WCAG AA ✓ Pass

Large Text (above 18pt) WCAG AAA ✓ Pass

Any Text WCAG AAA ✓ Pass

If you want to check with other color combinations, try the [Color Contrast Checker](#).



## Decimal 15580640 Background



This preview shows how black text looks on a background with the Decimal color 15580640.




This preview shows how white text looks on a background with the Decimal color 15580640.

# Color Blindness Simulation

Color vision deficiency is a very complex topic, and I could not describe the different causes any better than Wikipedia does, so if you want to learn more, you should check out their [article about color blindness](#).

## Dichromacy





**Tritanopia**  
15450319

# Trichromacy



**Original Color**  
15580640



**Protanomaly**  
13944293



**Deuteranomaly**  
14599135

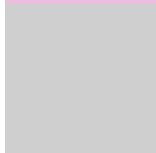


**Tritanomaly**  
15515605

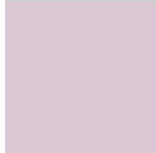
# Monochromacy



**Original Color**  
15580640



**Achromatopsia**  
13619151



**Achromatomaly**  
14338261

# CSS Examples

## Text

The CSS property to change the color of the text to Decimal 15580640 is called "color". The color property can be set on classes, ids or directly on the HTML element.

This example shows how text in the color #EDBDE0 looks like.

```
.text, #text, p{  
    color:#EDBDE0  
}
```

If you want to add a text shadow in that color use the text-shadow property, you can generate a text shadow directly with our [CSS Text Shadow Generator](#).

Here you see how black text with a 4 pixel #EDBDE0 colored shadow looks like.

```
.shadow{ text-shadow: 4px 4px 2px #EDBDE0  
}
```

## Border

The CSS property to change the border of an element to Decimal 15580640 is called "border". The border property can be set on classes, ids or directly on the HTML element.

This example shows the color as border, it can be applied via the CSS property "border" or "border-color".

```
.border, #border, table{ border:4px solid  
#EDBDE0 }
```

If only the border color should be changed use the property `border-color`.

```
.border{ border-color:#EDBDE0 }
```

If you want to add a box shadow in that color use:

Here you see how a box with a 4 pixel #EDBDE0 colored shadow looks like.

```
.boxshadow{ -moz-box-shadow:4px 4px 4px  
4px #EDBDE0; -webkit-box-shadow:4px 4px  
4px 4px #EDBDE0; box-shadow:4px 4px 4px  
4px #EDBDE0 }
```

# Background

The CSS property to change the background color of an element to Decimal 15580640 is called "background". The background property can be set on classes, ids or directly on the HTML element.

```
.background, #background, body{  
background:#EDBDE0 }
```

If only the background color should be changed can be used:

```
.background{ background-color:#EDBDE0 }
```

This example shows the color as background, it is applied via the CSS property "background".

To optimize and compress your CSS code, you can use our [online CSS compressor and optimizer](#) based on csstidy. If you want to create a linear or radial gradient as background or border, check our [CSS Gradient Generator](#).



Hey! You found this booklet interesting? Support Converting Colors with the new Membership Option!

The pro membership hides all ads, plus gives you double the colors in the color bucket, and more awesome pro features!

**[Learn more, Memberships starting at \\$2.50/m!](#)**

**Follow me  
on Twitter!**

@ConvertingColor