

Converting Colors

Decimal(15580898)

Have a look what the booklet for
Decimal(15580898) contains.

| | |
|--|----|
| Decimal(15580898) | 3 |
| <i>Conversions</i> | 4 |
| <i>Details</i> | 6 |
| <i>Harmonies</i> | 11 |
| <i>Previews</i> | 23 |
| <i>Color Blindness Simulation</i> | 26 |
| <i>CSS Examples</i> | 29 |

Color

Decimal(15580898)

Conversions

Conversions Part 1

| Format | Color |
|---------------|----------------------------|
| Hex | EDBEE2 |
| RGB | 237, 190, 226 |
| RGB Percent | 93%, 75%, 89% |
| CMY | 0.0706, 0.2549, 0.1137 |
| CMYK | 0.00, 0.20, 0.05, 0.07 |
| HSL | 314°, 57%, 84% |
| HSV | 314°, 20%, 93% |
| XYZ | 67.0660, 60.3224, 80.0601 |
| YIQ | 208.1570, 16.4560, 21.1600 |

Conversions

Conversions Part 2

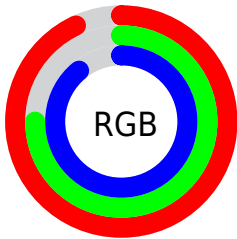
| Format | Color |
|-------------------------------------|------------------------------|
| R_{YB} | 237, 190, 226 |
| Decimal | 15580898 |
| CIE _{Lab} | 82.01, 22.66, -11.53 |
| CIE _{LCh} | 82, 25.427, 333.041 |
| Yxy | 60.3224, 0.3233, 0.2908 |
| Android (android.graphics.Color) | 4293770978 (0xFFEDBEE2) |
| YUV | 208.1570, 8.7966, 25.2953 |
| Hunter-Lab | 77.6675, 18.2168, -6.7492 |

Details

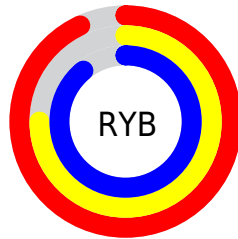
The Decimal color **15580898** is a light color, and the websafe version is hex **FFCCFF**. A complement of this color would be **12512713**, and the grayscale version is **13684944**.

A 20% lighter version of the original color is **16775167**, and **11897003** is the 20% darker color. If you saturate the color by 10%, you get **15574748**, and if you desaturate by 10%, it is **15587048**.

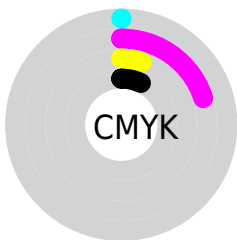
Distribution



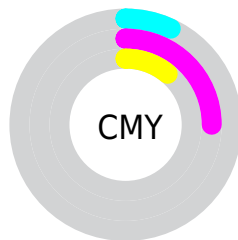
- Red (93%)
- Green (75%)
- Blue (89%)



- Red (93%)
- Yellow (75%)
- Blue (89%)



- Cyan (0%)
- Magenta (20%)
- Yellow (5%)
- Black (7%)



- Cyan (7%)
- Magenta (25%)
- Yellow (11%)

Brightness & Saturation Gradients

These gradients show how the Decimal color 15580898 changes by changing the brightness by 10 percent. The first figure shows a shift by +10% for each color and the second figure -10%.

Similar to the brightness gradients but the following saturation gradients show a change of the Decimal color 15580898 by changing the saturation by 10% instead.

15580898

15580898

16777215

13738950

16775167

11897003

10121104

8345206

6700638

5056582

3543600

2228251

0

 15580898

 15580898

 15574748

 15587048

 15568855

 15592941

 15562705

 15597555

 15556556

 15597560

 15550406

 15597566

 15544513

 15597567

 15538363

 15532214

Harmonies

Analogous

The Analogous color harmony consists of three colors that are next to each other on the color wheel.



13878772



15580898



16497610

Triad

The Triadic color harmony groups three colors that are evenly spaced from another and form a triangle on the color wheel.



15580898



14470044



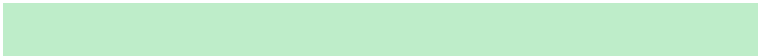
9034213

Complementary

The Complementary color scheme is a pair of colors which are on the opposite of each other on the color wheel.



15580898



12512713

Split Complementary

Split-complementary colors differ from the complementary color scheme. The scheme consists of three colors, the original color and two neighbors of the complement color.



9493198



15580898



12702372

Square

The Square scheme is like the rectangle color scheme, but the four colors are evenly spaced on the color wheel.



15580898



15778722



10934198



9884918

Rectangle

The Rectangle color scheme consists of four colors that form a rectangle on the color wheel.



15580898



16628922



10934198



9034206

Sweetspot

The Sweet Spot groups the original color and five complimentary colors.



15580898



16773371



13221613



8419197



0



8421504

Same Dimension

The Same Dimension uses a secret algorithm to generate beautiful new colors.



15580898



16761585



15580875



7694963



11862155



3538985

Inverse Universe

The Inverse Universe completely reimagines the original color for something new.



15580898



16761585



12512736



7694963



11862155



3538985

Previews

White Background



This preview shows how the Decimal color 15580898 looks on a white background.

Color Contrast Check

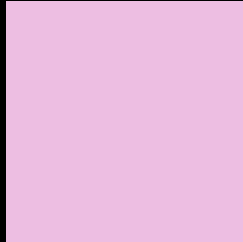
Large Text (above 18pt) WCAG AA × Fail

Any Text WCAG AA × Fail

Large Text (above 18pt) WCAG AAA × Fail

Any Text WCAG AAA × Fail

Black Background



This preview shows how the Decimal color 15580898 looks on a black background.

Color Contrast Check

Large Text (above 18pt) WCAG AA ✓ Pass

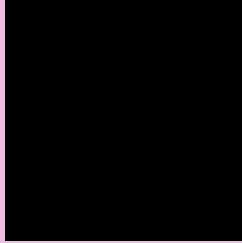
Any Text WCAG AA ✓ Pass

Large Text (above 18pt) WCAG AAA ✓ Pass

Any Text WCAG AAA ✓ Pass

If you want to check with other color combinations, try the [Color Contrast Checker](#).

Decimal 15580898 Background



This preview shows how black text looks on a background with the Decimal color 15580898.



This preview shows how white text looks on a background with the Decimal color 15580898.

Color Blindness Simulation

Color vision deficiency is a very complex topic, and I could not describe the different causes any better than Wikipedia does, so if you want to learn more, you should check out their [article about color blindness](#).

Dichromacy



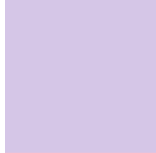


Tritanopia
15450576

Trichromacy



Original Color
15580898



Protanomaly
14010087



Deuteranomaly
14664929

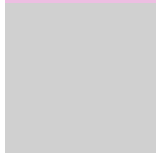


Tritanomaly
15515863

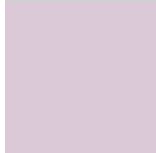
Monochromacy



Original Color
15580898



Achromatopsia
13684944



Achromatomaly
14404055

CSS Examples

Text

The CSS property to change the color of the text to Decimal 15580898 is called "color". The color property can be set on classes, ids or directly on the HTML element.

This example shows how text in the color #EDBEE2 looks like.

```
.text, #text, p{  
  color:#EDBEE2  
}
```

If you want to add a text shadow in that color use the text-shadow property, you can generate a text shadow directly with our [CSS Text Shadow Generator](#).

Here you see how black text with a 4 pixel #EDBEE2 colored shadow looks like.

```
.shadow{ text-shadow: 4px 4px 2px #EDBEE2
}
```

Border

The CSS property to change the border of an element to Decimal 15580898 is called "border". The border property can be set on classes, ids or directly on the HTML element.

This example shows the color as border, it can be applied via the CSS property "border" or "border-color".

```
.border, #border, table{ border:4px solid
#EDBEE2 }
```

If only the border color should be changed use the property `border-color`.

```
.border{ border-color:#EDBEE2 }
```

If you want to add a box shadow in that color use:

Here you see how a box with a 4 pixel #EDBEE2 colored shadow looks like.

```
.boxshadow{ -moz-box-shadow:4px 4px 4px  
4px #EDBEE2; -webkit-box-shadow:4px 4px  
4px 4px #EDBEE2; box-shadow:4px 4px 4px  
4px #EDBEE2 }
```

Background

The CSS property to change the background color of an element to Decimal 15580898 is called "background". The background property can be set on classes, ids or directly on the HTML element.

```
.background, #background, body{  
background:#EDBEE2 }
```

If only the background color should be changed can be used:

```
.background{ background-color:#EDBEE2 }
```

This example shows the color as background, it is applied via the CSS property "background".

To optimize and compress your CSS code, you can use our [online CSS compressor and optimizer](#) based on csstidy. If you want to create a linear or radial gradient as background or border, check our [CSS Gradient Generator](#).

Hey! You found this booklet interesting? Support Converting Colors with the new Membership Option!

The pro membership hides all ads, plus gives you double the colors in the color bucket, and more awesome pro features!

[Learn more, Memberships starting at \\$2.50/m!](#)

**Follow me
on Twitter!**

@ConvertingColor