

Converting Colors

Decimal(15581421)

Have a look what the booklet for
Decimal(15581421) contains.

Decimal(15581421)	3
<i>Conversions</i>	4
<i>Details</i>	6
<i>Harmonies</i>	11
<i>Previews</i>	23
<i>Color Blindness Simulation</i>	26
<i>CSS Examples</i>	29

Color

Decimal(15581421)

Conversions

Conversions Part 1

Format	Color
Hex	EDC0ED
RGB	237, 192, 237
RGB Percent	93%, 75%, 93%
CMY	0.0706, 0.2471, 0.0706
CMYK	0.00, 0.19, 0.00, 0.07
HSL	300°, 56%, 84%
HSV	300°, 19%, 93%
XYZ	69.0608, 61.8182, 88.4130
YIQ	210.5850, 12.3750, 23.5350

Conversions

Conversions Part 2

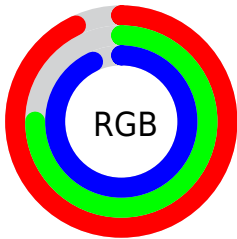
Format	Color
R _Y B	237, 192, 237
Decimal	15581421
CIE Lab	82.82, 23.57, -16.21
CIE LCh	83, 28.609, 325.477
Yxy	61.8182, 0.3149, 0.2819
Android (android.graphics.Color)	4293771501 (0xFFEDC0ED)
YUV	210.5850, 13.0226, 23.1660
Hunter-Lab	78.6246, 19.1944, -11.6341

Details

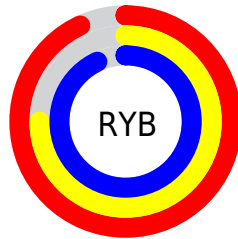
The Decimal color **15581421** is a light color, and the websafe version is hex **FFCCFF**. A complement of this color would be **12643776**, and the grayscale version is **13816530**.

A 20% lighter version of the original color is **16775679**, and **11897525** is the 20% darker color. If you saturate the color by 10%, you get **15575277**, and if you desaturate by 10%, it is **15587565**.

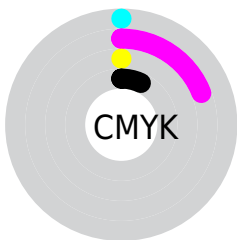
Distribution



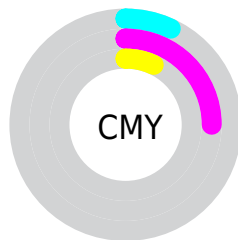
- Red (93%)
- Green (75%)
- Blue (93%)



- Red (93%)
- Yellow (75%)
- Blue (93%)



- Cyan (0%)
- Magenta (19%)
- Yellow (0%)
- Black (7%)



- Cyan (7%)
- Magenta (25%)
- Yellow (7%)

Brightness & Saturation Gradients

These gradients show how the Decimal color 15581421 changes by changing the brightness by 10 percent. The first figure shows a shift by +10% for each color and the second figure -10%.

Similar to the brightness gradients but the following saturation gradients show a change of the Decimal color 15581421 by changing the saturation by 10% instead.

 15581421

 15581421

16777215

 13739473

 16775679

 11897525

 10121626

 8345728

 6701159

 5056847

 3543864

 2228259

 9

 15581421

 15581421

 15575277

 15587565

 15569389

 15593453

 15563245

 15597549

 15557101

 15550957

 15545069

 15538925

 15532781

 15532269

Harmonies

Analogous

The Analogous color harmony consists of three colors that are next to each other on the color wheel.



13486591



15581421



16759763

Triad

The Triadic color harmony groups three colors that are evenly spaced from another and form a triangle on the color wheel.



15581421



15125401



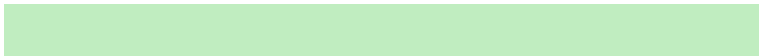
8445412

Complementary

The Complementary color scheme is a pair of colors which are on the opposite of each other on the color wheel.



15581421



12643776

Split Complementary

Split-complementary colors differ from the complementary color scheme. The scheme consists of three colors, the original color and two neighbors of the complement color.



9428425



15581421



13292701

Square

The Square scheme is like the rectangle color scheme, but the four colors are evenly spaced on the color wheel.



15581421



16499363



11262639



9034234

Rectangle

The Rectangle color scheme consists of four colors that form a rectangle on the color wheel.



15581421



16759745



11262639



8576476

Sweetspot

The Sweet Spot groups the original color and five complimentary colors.



15581421



16773375



12632301



8419200



0



8421504

Same Dimension

The Same Dimension uses a secret algorithm to generate beautiful new colors.



15581421



16762111



15581398



7694965



11862197



3538998

Inverse Universe

The Inverse Universe completely reimagines the original color for something new.



15581421



16762111



12643798



7694965



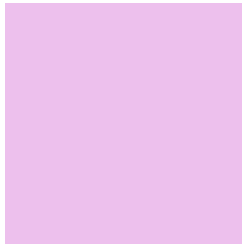
11862197



3538998

Previews

White Background



This preview shows how the Decimal color 15581421 looks on a white background.

Color Contrast Check

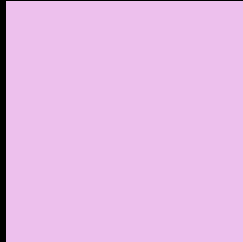
Large Text (above 18pt) WCAG AA × Fail

Any Text WCAG AA × Fail

Large Text (above 18pt) WCAG AAA × Fail

Any Text WCAG AAA × Fail

Black Background



This preview shows how the Decimal color 15581421 looks on a black background.

Color Contrast Check

Large Text (above 18pt) WCAG AA ✓ Pass

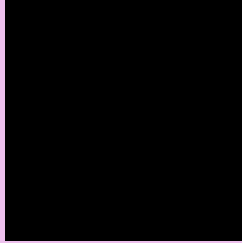
Any Text WCAG AA ✓ Pass

Large Text (above 18pt) WCAG AAA ✓ Pass

Any Text WCAG AAA ✓ Pass

If you want to check with other color combinations, try the [Color Contrast Checker](#).

Decimal 15581421 Background



This preview shows how black text looks on a background with the Decimal color 15581421.



This preview shows how white text looks on a background with the Decimal color 15581421.

Color Blindness Simulation

Color vision deficiency is a very complex topic, and I could not describe the different causes any better than Wikipedia does, so if you want to learn more, you should check out their [article about color blindness](#).

Dichromacy





Tritanopia
15320276

Trichromacy



Original Color
15581421



Protanomaly
13945074



Deuteranomaly
14599916

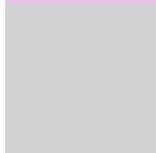


Tritanomaly
15385565

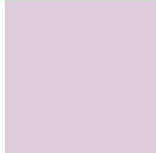
Monochromacy



Original Color
15581421



Achromatopsia
13882323



Achromatomaly
14470364

CSS Examples

Text

The CSS property to change the color of the text to Decimal 15581421 is called "color". The color property can be set on classes, ids or directly on the HTML element.

This example shows how text in the color #EDC0ED looks like.

```
.text, #text, p{  
  color:#EDC0ED  
}
```

If you want to add a text shadow in that color use the text-shadow property, you can generate a text shadow directly with our [CSS Text Shadow Generator](#).

Here you see how black text with a 4 pixel #EDC0ED colored shadow looks like.

```
.shadow{ text-shadow: 4px 4px 2px #EDC0ED
}
```

Border

The CSS property to change the border of an element to Decimal 15581421 is called "border". The border property can be set on classes, ids or directly on the HTML element.

This example shows the color as border, it can be applied via the CSS property "border" or "border-color".

```
.border, #border, table{ border:4px solid
#EDC0ED }
```

If only the border color should be changed use the property `border-color`.

```
.border{ border-color:#EDC0ED }
```

If you want to add a box shadow in that color use:

Here you see how a box with a 4 pixel #EDC0ED colored shadow looks like.

```
.boxshadow{ -moz-box-shadow:4px 4px 4px  
4px #EDC0ED; -webkit-box-shadow:4px 4px  
4px 4px #EDC0ED; box-shadow:4px 4px 4px  
4px #EDC0ED }
```

Background

The CSS property to change the background color of an element to Decimal 15581421 is called "background". The background property can be set on classes, ids or directly on the HTML element.

```
.background, #background, body{  
background:#EDC0ED }
```

If only the background color should be changed can be used:

```
.background{ background-color:#EDC0ED }
```

This example shows the color as background, it is applied via the CSS property "background".

To optimize and compress your CSS code, you can use our [online CSS compressor and optimizer](#) based on csstidy. If you want to create a linear or radial gradient as background or border, check our [CSS Gradient Generator](#).

Hey! You found this booklet interesting? Support Converting Colors with the new Membership Option!

The pro membership hides all ads, plus gives you double the colors in the color bucket, and more awesome pro features!

[Learn more, Memberships starting at \\$2.50/m!](#)

**Follow me
on Twitter!**

@ConvertingColor