

# Converting Colors

Decimal(15628171)

Have a look what the booklet for  
Decimal(15628171) contains.

<b>Decimal(15628171)</b> .....	3
<i><b>Conversions</b></i> .....	4
<i><b>Details</b></i> .....	6
<i><b>Harmonies</b></i> .....	11
<i><b>Previews</b></i> .....	23
<i><b>Color Blindness Simulation</b></i> .....	26
<i><b>CSS Examples</b></i> .....	29

# **Color**

**Decimal(15628171)**

# Conversions

## Conversions Part 1

Format	Color
Hex	EE778B
RGB	238, 119, 139
RGB Percent	93%, 47%, 55%
CMY	0.0667, 0.5333, 0.4549
CMYK	0.00, 0.50, 0.42, 0.07
HSL	350°, 78%, 70%
HSV	350°, 50%, 93%
XYZ	46.5169, 33.2349, 28.3894
YIQ	156.8610, 64.5040, 31.4480

# Conversions

## Conversions Part 2

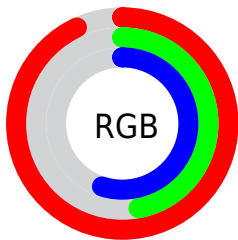
Format	Color
R <sub>Y</sub> B	238, 119, 139
Decimal	15628171
CIE Lab	64.35, 47.69, 10.77
CIE LCh	64, 48.889, 12.721
Yxy	33.2349, 0.4302, 0.3073
Android (android.graphics.Color)	4293818251 (0xFFEE778B)
YUV	156.8610, -8.8055, 71.1589
Hunter-Lab	57.6497, 43.1428, 11.1577

# Details

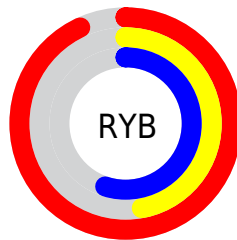
The Decimal color **15628171** is a light color, and the websafe version is hex **CC6666**. A complement of this color would be **7859930**, and the grayscale version is **10329501**.

A 20% lighter version of the original color is **16756416**, and **11682393** is the 20% darker color. If you saturate the color by 10%, you get **15622007**, and if you desaturate by 10%, it is **15634335**.

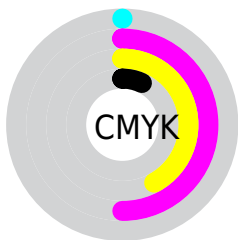
# Distribution



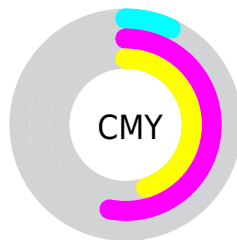
- Red (93%)
- Green (47%)
- Blue (55%)



- Red (93%)
- Yellow (47%)
- Blue (55%)



- Cyan (0%)
- Magenta (50%)
- Yellow (42%)
- Black (7%)



- Cyan (7%)
- Magenta (53%)
- Yellow (45%)

# Brightness & Saturation Gradients

These gradients show how the Decimal color 15628171 changes by changing the brightness by 10 percent. The first figure shows a shift by +10% for each color and the second figure -10%.

Similar to the brightness gradients but the following saturation gradients show a change of the Decimal color 15628171 by changing the saturation by 10% instead.



 15628171

 15628171

16777215

 13655154

 16756416

 11682393

 16763612

 9774658

 16771065

 7929900

 6029336

 4325376

 2424833

 0

 15628171

 15628171

 15622007

 15634335

 15615843

 15640499

 15609936

 15646406

 15603772

 15652570

 15597608

 15658734

 15663103

# Harmonies

## Analogous

The Analogous color harmony consists of three colors that are next to each other on the color wheel.



14711735



15628171



15040867

# Triad

The Triadic color harmony groups three colors that are evenly spaced from another and form a triangle on the color wheel.



15628171



7580249



43247

# Complementary

The Complementary color scheme is a pair of colors which are on the opposite of each other on the color wheel.



15628171



7859930

# Split Complementary

Split-complementary colors differ from the complementary color scheme. The scheme consists of three colors, the original color and two neighbors of the complement color.



45270



15628171



2797697

# Square

The Square scheme is like the rectangle color scheme, but the four colors are evenly spaced on the color wheel.



15628171



10788931



45742



7576305

# Rectangle

The Rectangle color scheme consists of four colors that form a rectangle on the color wheel.



15628171



13994830



45742



44009



# Sweetspot

The Sweet Spot groups the original color and five complimentary colors.



15628171



16767455



14186478



8415596



0



8421504



# Same Dimension

The Same Dimension uses a secret algorithm to generate beautiful new colors.



15628171



16737920



15637879



7892078



12058655



3670025



# Inverse Universe

The Inverse Universe completely reimagines the original color for something new.



15628171



16737920



7850222



7892078



12058655



3670025



# Previews

## White Background



This preview shows how the Decimal color 15628171 looks on a white background.

## Color Contrast Check

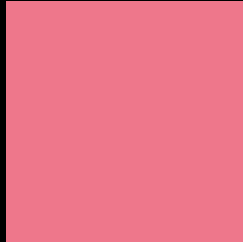
Large Text (above 18pt) WCAG AA × Fail

Any Text WCAG AA × Fail

Large Text (above 18pt) WCAG AAA × Fail

Any Text WCAG AAA × Fail

# Black Background



This preview shows how the Decimal color 15628171 looks on a black background.

## Color Contrast Check

Large Text (above 18pt) WCAG AA ✓ Pass

Any Text WCAG AA ✓ Pass

Large Text (above 18pt) WCAG AAA ✓ Pass

Any Text WCAG AAA ✓ Pass

If you want to check with other color combinations, try the [Color Contrast Checker](#).



## Decimal 15628171 Background



This preview shows how black text looks on a background with the Decimal color 15628171.

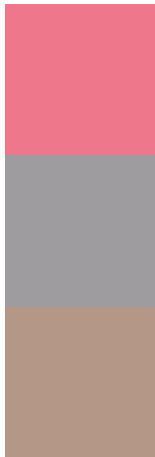


This preview shows how white text looks on a background with the Decimal color 15628171.

# Color Blindness Simulation

Color vision deficiency is a very complex topic, and I could not describe the different causes any better than Wikipedia does, so if you want to learn more, you should check out their [article about color blindness](#).


## Dichromacy



**Original Color**  
15628171

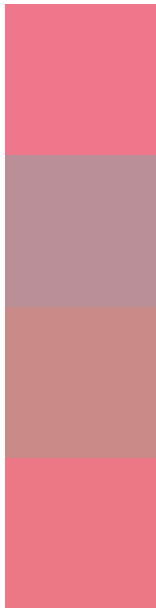
**Protanopia**  
10394783

**Deuteranopia**  
11835270



**Tritanopia**  
15563137

# Trichromacy



**Original Color**  
15628171

**Protanomaly**  
12291992

**Deuteranomaly**  
13208456

**Tritanomaly**  
15562885

# Monochromacy



**Original Color**  
15628171

**Achromatopsia**  
10329501

**Achromatomaly**  
12226454

# CSS Examples

## Text

The CSS property to change the color of the text to Decimal 15628171 is called "color". The color property can be set on classes, ids or directly on the HTML element.

This example shows how text in the color #EE778B looks like.

```
.text, #text, p{  
    color:#EE778B  
}
```

If you want to add a text shadow in that color use the text-shadow property, you can generate a text shadow directly with our [CSS Text Shadow Generator](#).

Here you see how black text with a 4 pixel #EE778B colored shadow looks like.

```
.shadow{ text-shadow: 4px 4px 2px #EE778B
}
```

## Border

The CSS property to change the border of an element to Decimal 15628171 is called "border". The border property can be set on classes, ids or directly on the HTML element.

This example shows the color as border, it can be applied via the CSS property "border" or "border-color".

```
.border, #border, table{ border:4px solid
#EE778B }
```

If only the border color should be changed use the property `border-color`.

```
.border{ border-color:#EE778B }
```

If you want to add a box shadow in that color use:

Here you see how a box with a 4 pixel #EE778B colored shadow looks like.

```
.boxshadow{ -moz-box-shadow:4px 4px 4px  
4px #EE778B; -webkit-box-shadow:4px 4px  
4px 4px #EE778B; box-shadow:4px 4px 4px  
4px #EE778B }
```

# Background

The CSS property to change the background color of an element to Decimal 15628171 is called "background". The background property can be set on classes, ids or directly on the HTML element.

```
.background, #background, body{  
background:#EE778B }
```

If only the background color should be changed can be used:

```
.background{ background-color:#EE778B }
```

This example shows the color as background, it is applied via the CSS property "background".

To optimize and compress your CSS code, you can use our [online CSS compressor and optimizer](#) based on csstidy. If you want to create a linear or radial gradient as background or border, check our [CSS Gradient Generator](#).



Hey! You found this booklet interesting? Support Converting Colors with the new Membership Option!

The pro membership hides all ads, plus gives you double the colors in the color bucket, and more awesome pro features!

**[Learn more, Memberships starting at \\$2.50/m!](#)**

**Follow me  
on Twitter!**

@ConvertingColor