

# Converting Colors

Decimal(15634085)

Have a look what the booklet for  
Decimal(15634085) contains.

<b>Decimal(15634085)</b> .....	3
<i><b>Conversions</b></i> .....	4
<i><b>Details</b></i> .....	6
<i><b>Harmonies</b></i> .....	11
<i><b>Previews</b></i> .....	23
<i><b>Color Blindness Simulation</b></i> .....	26
<i><b>CSS Examples</b></i> .....	29

# **Color**

**Decimal(15634085)**

# Conversions

## Conversions Part 1

Format	Color
Hex	EE8EA5
RGB	238, 142, 165
RGB Percent	93%, 56%, 65%
CMY	0.0667, 0.4431, 0.3529
CMYK	0.00, 0.40, 0.31, 0.07
HSL	346°, 74%, 75%
HSV	346°, 40%, 93%
XYZ	51.7244, 40.2398, 40.6382
YIQ	173.3260, 49.8330, 27.5050

# Conversions

## Conversions Part 2

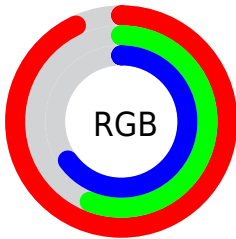
<b>Format</b>	<b>Color</b>
<b>R<sub>YB</sub></b>	238, 142, 165
Decimal	15634085
CIE <sub>Lab</sub>	69.64, 39.08, 3.66
CIE <sub>LCh</sub>	70, 39.248, 5.347
Yxy	40.2398, 0.3901, 0.3035
Android (android.graphics.Color)	4293824165 (0xFFEE8EA5)
YUV	173.3260, -4.1047, 56.7191
Hunter-Lab	63.4348, 34.5371, 6.4215

# Details

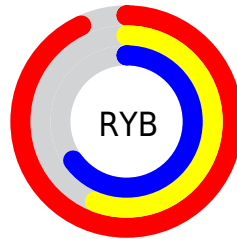
The Decimal color **15634085** is a light color, and the websafe version is hex **FF9999**. A complement of this color would be **9367255**, and the grayscale version is **11382189**.

A 20% lighter version of the original color is **16762332**, and **11819633** is the 20% darker color. If you saturate the color by 10%, you get **15627923**, and if you desaturate by 10%, it is **15640247**.

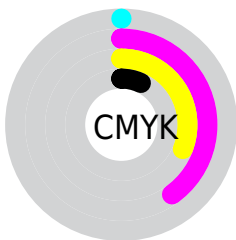
# Distribution



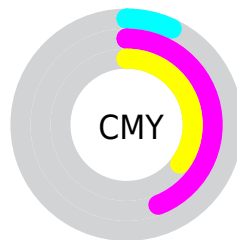
- Red (93%)
- Green (56%)
- Blue (65%)



- Red (93%)
- Yellow (56%)
- Blue (65%)



- Cyan (0%)
- Magenta (40%)
- Yellow (31%)
- Black (7%)



- Cyan (7%)
- Magenta (44%)
- Yellow (35%)

# Brightness & Saturation Gradients

These gradients show how the Decimal color 15634085 changes by changing the brightness by 10 percent. The first figure shows a shift by +10% for each color and the second figure -10%.

Similar to the brightness gradients but the following saturation gradients show a change of the Decimal color 15634085 by changing the saturation by 10% instead.



 15634085

 15634085

16777215

 13726603

 16762332

 11819633

 16769528

 9912409

 8136514

 6359340

 4587543

 3145730

 0

 15634085

 15634085

 15627923

 15640247

 15621761

 15646409

 15615855

 15652315

 15609693

 15658477

 15603531

 15663103

 15597625

# Harmonies

## Analogous

The Analogous color harmony consists of three colors that are next to each other on the color wheel.



14455753



15634085



15504259

# Triad

The Triadic color harmony groups three colors that are evenly spaced from another and form a triangle on the color wheel.



15634085



9811055



3978986

# Complementary

The Complementary color scheme is a pair of colors which are on the opposite of each other on the color wheel.



15634085



9367255

# Split Complementary

Split-complementary colors differ from the complementary color scheme. The scheme consists of three colors, the original color and two neighbors of the complement color.



48338



15634085



6929291

# Square

The Square scheme is like the rectangle color scheme, but the four colors are evenly spaced on the color wheel.



15634085



12298850



3325360



8432881

# Rectangle

The Rectangle color scheme consists of four colors that form a rectangle on the color wheel.



15634085



14785137



3325360



2078948



# Sweetspot

The Sweet Spot groups the original color and five complimentary colors.



15634085



16769256



14061294



8416882



0



8421504



# Same Dimension

The Same Dimension uses a secret algorithm to generate beautiful new colors.



15634085



16745890



15640206



7892079



12058668



3670029



# Inverse Universe

The Inverse Universe completely reimagines the original color for something new.



15634085



16745890



9361134



7892079



12058668



3670029



# Previews

## White Background



This preview shows how the Decimal color 15634085 looks on a white background.

## Color Contrast Check

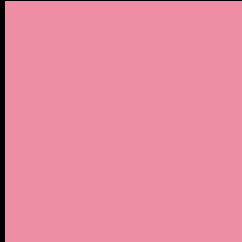
Large Text (above 18pt) WCAG AA × Fail

Any Text WCAG AA × Fail

Large Text (above 18pt) WCAG AAA × Fail

Any Text WCAG AAA × Fail

# Black Background



This preview shows how the Decimal color 15634085 looks on a black background.

## Color Contrast Check

Large Text (above 18pt) WCAG AA ✓ Pass

Any Text WCAG AA ✓ Pass

Large Text (above 18pt) WCAG AAA ✓ Pass

Any Text WCAG AAA ✓ Pass

If you want to check with other color combinations, try the [Color Contrast Checker](#).



## Decimal 15634085 Background



This preview shows how black text looks on a background with the Decimal color 15634085.



This preview shows how white text looks on a background with the Decimal color 15634085.

# Color Blindness Simulation

Color vision deficiency is a very complex topic, and I could not describe the different causes any better than Wikipedia does, so if you want to learn more, you should check out their [article about color blindness](#).

## Dichromacy



**Original Color**  
15634085

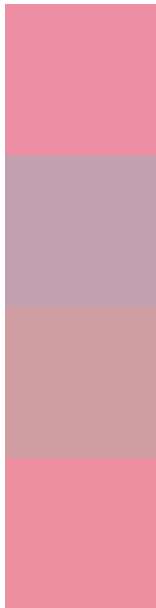
**Protanopia**  
11250357

**Deuteranopia**  
12559777



**Tritanopia**  
15569050

# Trichromacy



**Original Color**  
15634085

**Protanomaly**  
12820655

**Deuteranomaly**  
13671842

**Tritanomaly**  
15568798

# Monochromacy



**Original Color**  
15634085

**Achromatopsia**  
11382189

**Achromatomaly**  
12952234

# CSS Examples

## Text

The CSS property to change the color of the text to Decimal 15634085 is called "color". The color property can be set on classes, ids or directly on the HTML element.

This example shows how text in the color #EE8EA5 looks like.

```
.text, #text, p{  
    color:#EE8EA5  
}
```

If you want to add a text shadow in that color use the text-shadow property, you can generate a text shadow directly with our [CSS Text Shadow Generator](#).

Here you see how black text with a 4 pixel #EE8EA5 colored shadow looks like.

```
.shadow{ text-shadow: 4px 4px 2px #EE8EA5  
}
```

## Border

The CSS property to change the border of an element to Decimal 15634085 is called "border". The border property can be set on classes, ids or directly on the HTML element.

This example shows the color as border, it can be applied via the CSS property "border" or "border-color".

```
.border, #border, table{ border:4px solid  
#EE8EA5 }
```

If only the border color should be changed use the property `border-color`.

```
.border{ border-color:#EE8EA5 }
```

If you want to add a box shadow in that color use:

Here you see how a box with a 4 pixel #EE8EA5 colored shadow looks like.

```
.boxshadow{ -moz-box-shadow:4px 4px 4px  
4px #EE8EA5; -webkit-box-shadow:4px 4px  
4px 4px #EE8EA5; box-shadow:4px 4px 4px  
4px #EE8EA5 }
```

# Background

The CSS property to change the background color of an element to Decimal 15634085 is called "background". The background property can be set on classes, ids or directly on the HTML element.

```
.background, #background, body{  
background:#EE8EA5 }
```

If only the background color should be changed can be used:

```
.background{ background-color:#EE8EA5 }
```

This example shows the color as background, it is applied via the CSS property "background".

To optimize and compress your CSS code, you can use our [online CSS compressor and optimizer](#) based on csstidy. If you want to create a linear or radial gradient as background or border, check our [CSS Gradient Generator](#).



Hey! You found this booklet interesting? Support Converting Colors with the new Membership Option!

The pro membership hides all ads, plus gives you double the colors in the color bucket, and more awesome pro features!

**[Learn more, Memberships starting at \\$2.50/m!](#)**

**Follow me  
on Twitter!**

@ConvertingColor