

Converting Colors

Decimal(15641787)

Have a look what the booklet for
Decimal(15641787) contains.

Decimal(15641787)	3
<i>Conversions</i>	4
<i>Details</i>	6
<i>Harmonies</i>	11
<i>Previews</i>	23
<i>Color Blindness Simulation</i>	26
<i>CSS Examples</i>	29

Color

Decimal(15641787)

Conversions

Conversions Part 1

Format	Color
Hex	EEACBB
RGB	238, 172, 187
RGB Percent	93%, 67%, 73%
CMY	0.0667, 0.3255, 0.2667
CMYK	0.00, 0.28, 0.21, 0.07
HSL	346°, 66%, 80%
HSV	346°, 28%, 93%
XYZ	58.9821, 51.2700, 53.8011
YIQ	193.4440, 34.5210, 18.6570

Conversions

Conversions Part 2

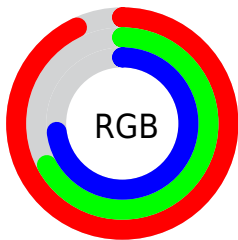
Format	Color
R _{YB}	238, 172, 187
Decimal	15641787
CIE Lab	76.84, 26.30, 1.96
CIE LCh	77, 26.369, 4.258
Yxy	51.2700, 0.3595, 0.3125
Android (android.graphics.Color)	4293831867 (0xFFEEACBB)
YUV	193.4440, -3.1769, 39.0756
Hunter-Lab	71.6031, 21.7315, 5.5729

Details

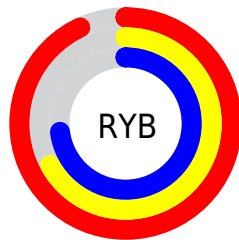
The Decimal color **15641787** is a light color, and the websafe version is hex **CC9999**. A complement of this color would be **11333343**, and the grayscale version is **12698049**.

A 20% lighter version of the original color is **16770291**, and **11892614** is the 20% darker color. If you saturate the color by 10%, you get **15635625**, and if you desaturate by 10%, it is **15647949**.

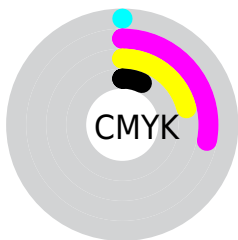
Distribution



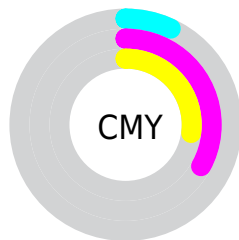
- Red (93%)
- Green (67%)
- Blue (73%)



- Red (93%)
- Yellow (67%)
- Blue (73%)



- Cyan (0%)
- Magenta (28%)
- Yellow (21%)
- Black (7%)



- Cyan (7%)
- Magenta (33%)
- Yellow (27%)

Brightness & Saturation Gradients

These gradients show how the Decimal color 15641787 changes by changing the brightness by 10 percent. The first figure shows a shift by +10% for each color and the second figure -10%.

Similar to the brightness gradients but the following saturation gradients show a change of the Decimal color 15641787 by changing the saturation by 10% instead.

 15641787

 15641787

16777215

 13734304

 16770291

 11892614

 10051181

 8341076

 6565437

 4921128

 3342611

 1703937

 0

 15641787

 15641787

 15635625

 15647949

 15629462

 15654112

 15623556

 15660018

 15617393

 15663103

 15611231

 15605069

 15598906

 15597622

Harmonies

Analogous

The Analogous color harmony consists of three colors that are next to each other on the color wheel.



14725075



15641787



15642275

Triad

The Triadic color harmony groups three colors that are evenly spaced from another and form a triangle on the color wheel.



15641787



11650197



8832745

Complementary

The Complementary color scheme is a pair of colors which are on the opposite of each other on the color wheel.



15641787



11333343

Split Complementary

Split-complementary colors differ from the complementary color scheme. The scheme consists of three colors, the original color and two neighbors of the complement color.



7850712



15641787



9882024

Square

The Square scheme is like the rectangle color scheme, but the four colors are evenly spaced on the color wheel.



15641787



13417869



8375488



10862574

Rectangle

The Rectangle color scheme consists of four colors that form a rectangle on the color wheel.



15641787



15184791



8375488



8308964

Sweetspot

The Sweet Spot groups the original color and five complimentary colors.



15641787



16772079



14658798



8418166



0



8421504

Same Dimension

The Same Dimension uses a secret algorithm to generate beautiful new colors.



15641787



16755646



15646380



7892079



12058666



3670029

Inverse Universe

The Inverse Universe completely reimagines the original color for something new.



15641787



16755646



11328750



7892079



12058666



3670029

Previews

White Background



This preview shows how the Decimal color 15641787 looks on a white background.

Color Contrast Check

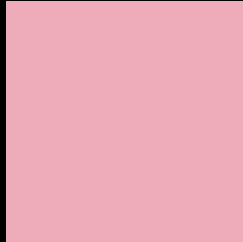
Large Text (above 18pt) WCAG AA × Fail

Any Text WCAG AA × Fail

Large Text (above 18pt) WCAG AAA × Fail

Any Text WCAG AAA × Fail

Black Background



This preview shows how the Decimal color 15641787 looks on a black background.

Color Contrast Check

Large Text (above 18pt) WCAG AA ✓ Pass

Any Text WCAG AA ✓ Pass

Large Text (above 18pt) WCAG AAA ✓ Pass

Any Text WCAG AAA ✓ Pass

If you want to check with other color combinations, try the [Color Contrast Checker](#).

Decimal 15641787 Background



This preview shows how black text looks on a background with the Decimal color 15641787.



This preview shows how white text looks on a background with the Decimal color 15641787.

Color Blindness Simulation

Color vision deficiency is a very complex topic, and I could not describe the different causes any better than Wikipedia does, so if you want to learn more, you should check out their [article about color blindness](#).

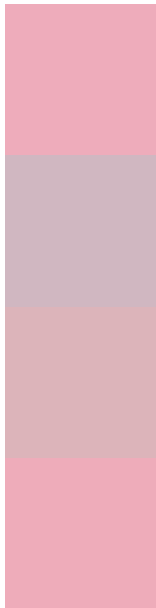
Dichromacy





Tritanopia
15641785

Trichromacy



Original Color
15641787

Protanomaly
13678529

Deuteranomaly
14464186

Tritanomaly
15641786

Monochromacy



Original Color
15641787

Achromatopsia
12698049

Achromatomaly
13744575

CSS Examples

Text

The CSS property to change the color of the text to Decimal 15641787 is called "color". The color property can be set on classes, ids or directly on the HTML element.

This example shows how text in the color #EEACBB looks like.

```
.text, #text, p{  
    color:#EEACBB  
}
```

If you want to add a text shadow in that color use the text-shadow property, you can generate a text shadow directly with our [CSS Text Shadow Generator](#).

Here you see how black text with a 4 pixel #EEACBB colored shadow looks like.

```
.shadow{ text-shadow: 4px 4px 2px #EEACBB
}
```

Border

The CSS property to change the border of an element to Decimal 15641787 is called "border". The border property can be set on classes, ids or directly on the HTML element.

This example shows the color as border, it can be applied via the CSS property "border" or "border-color".

```
.border, #border, table{ border:4px solid
#EEACBB }
```

If only the border color should be changed use the property `border-color`.

```
.border{ border-color:#EEACBB }
```

If you want to add a box shadow in that color use:

Here you see how a box with a 4 pixel #EEACBB colored shadow looks like.

```
.boxshadow{ -moz-box-shadow:4px 4px 4px  
4px #EEACBB; -webkit-box-shadow:4px 4px  
4px 4px #EEACBB; box-shadow:4px 4px 4px  
4px #EEACBB }
```

Background

The CSS property to change the background color of an element to Decimal 15641787 is called "background". The background property can be set on classes, ids or directly on the HTML element.

```
.background, #background, body{  
background:#EEACBB }
```

If only the background color should be changed can be used:

```
.background{ background-color:#EEACBB }
```

This example shows the color as background, it is applied via the CSS property "background".

To optimize and compress your CSS code, you can use our [online CSS compressor and optimizer](#) based on csstidy. If you want to create a linear or radial gradient as background or border, check our [CSS Gradient Generator](#).

Hey! You found this booklet interesting? Support Converting Colors with the new Membership Option!

The pro membership hides all ads, plus gives you double the colors in the color bucket, and more awesome pro features!

[Learn more, Memberships starting at \\$2.50/m!](#)

**Follow me
on Twitter!**

@ConvertingColor