

Converting Colors

Decimal(15646901)

Have a look what the booklet for
Decimal(15646901) contains.

Decimal(15646901)	3
<i>Conversions</i>	4
<i>Details</i>	6
<i>Harmonies</i>	11
<i>Previews</i>	23
<i>Color Blindness Simulation</i>	26
<i>CSS Examples</i>	29

Color

Decimal(15646901)

Conversions

Conversions Part 1

Format	Color
Hex	EEC0B5
RGB	238, 192, 181
RGB Percent	93%, 75%, 71%
CMY	0.0667, 0.2471, 0.2902
CMYK	0.00, 0.19, 0.24, 0.07
HSL	12°, 63%, 82%
HSV	12°, 24%, 93%
XYZ	62.4500, 59.2126, 51.8538
YIQ	204.5000, 30.9470, 6.3310

Conversions

Conversions Part 2

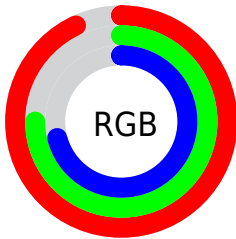
Format	Color
R _Y B	238, 195, 181
Decimal	15646901
CIE Lab	81.41, 14.81, 11.76
CIE LCh	81, 18.916, 38.445
Yxy	59.2126, 0.3599, 0.3413
Android (android.graphics.Color)	4293836981 (0xFFEEC0B5)
YUV	204.5000, -11.5855, 29.3795
Hunter-Lab	76.9497, 10.2030, 13.9113

Details

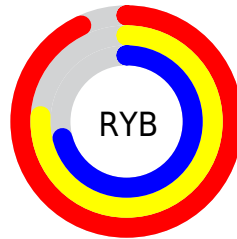
The Decimal color **15646901** is a light color, and the websafe version is hex **FFCCCC**. A complement of this color would be **11920366**, and the grayscale version is **13487565**.

A 20% lighter version of the original color is **16775405**, and **11897472** is the 20% darker color. If you saturate the color by 10%, you get **15642013**, and if you desaturate by 10%, it is **15651789**.

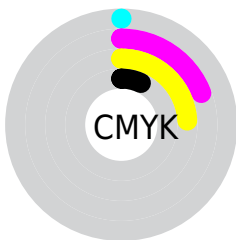
Distribution



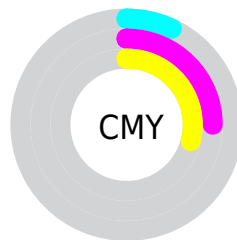
- Red (93%)
- Green (75%)
- Blue (71%)



- Red (93%)
- Yellow (76%)
- Blue (71%)



- Cyan (0%)
- Magenta (19%)
- Yellow (24%)
- Black (7%)



- Cyan (7%)
- Magenta (25%)
- Yellow (29%)

Brightness & Saturation Gradients

These gradients show how the Decimal color 15646901 changes by changing the brightness by 10 percent. The first figure shows a shift by +10% for each color and the second figure -10%.

Similar to the brightness gradients but the following saturation gradients show a change of the Decimal color 15646901 by changing the saturation by 10% instead.

 15646901

 15646901

16777215

 13739418

 16775405

 11897472

 10121575

 8345679

 6635832

 4991523

 3413261

 2097152

 0

 15646901

 15646901

 15642013

 15651789

 15637125

 15656677

 15631982

 15661820

 15627094

 15663103

 15622206

 15617318

 15612430

 15609344

Harmonies

Analogous

The Analogous color harmony consists of three colors that are next to each other on the color wheel.



15711942



15646901



14992810

Triad

The Triadic color harmony groups three colors that are evenly spaced from another and form a triangle on the color wheel.



15646901



11326397



12438253

Complementary

The Complementary color scheme is a pair of colors which are on the opposite of each other on the color wheel.



15646901



11920366

Split Complementary

Split-complementary colors differ from the complementary color scheme. The scheme consists of three colors, the original color and two neighbors of the complement color.



11063531



15646901



10409423

Square

The Square scheme is like the rectangle color scheme, but the four colors are evenly spaced on the color wheel.



15646901



12570798



10277856



13944038

Rectangle

The Rectangle color scheme consists of four colors that form a rectangle on the color wheel.



15646901



14272935



10277856



11914477

Sweetspot

The Sweet Spot groups the original color and five complimentary colors.



15646901



16773613



15644132



8419189



0



8421504

Same Dimension

The Same Dimension uses a secret algorithm to generate beautiful new colors.



15646901



16761781



15654069



7892588



12067584



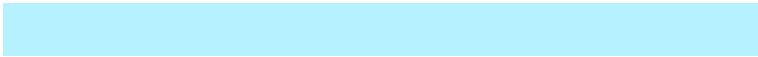
3672832

Inverse Universe

The Inverse Universe completely reimagines the original color for something new.



11920366



11923967



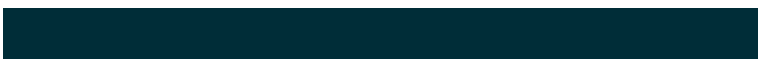
11913198



7108216



38072



11576

Previews

White Background



This preview shows how the Decimal color 15646901 looks on a white background.

Color Contrast Check

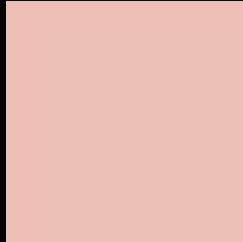
Large Text (above 18pt) WCAG AA × Fail

Any Text WCAG AA × Fail

Large Text (above 18pt) WCAG AAA × Fail

Any Text WCAG AAA × Fail

Black Background



This preview shows how the Decimal color 15646901 looks on a black background.

Color Contrast Check

Large Text (above 18pt) WCAG AA ✓ Pass

Any Text WCAG AA ✓ Pass

Large Text (above 18pt) WCAG AAA ✓ Pass

Any Text WCAG AAA ✓ Pass

If you want to check with other color combinations, try the [Color Contrast Checker](#).

Decimal 15646901 Background



This preview shows how black text looks on a background with the Decimal color 15646901.

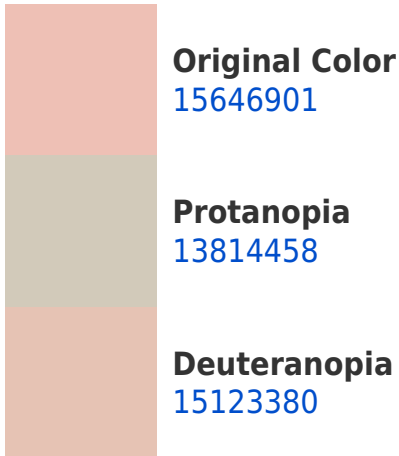


This preview shows how white text looks on a background with the Decimal color 15646901.

Color Blindness Simulation

Color vision deficiency is a very complex topic, and I could not describe the different causes any better than Wikipedia does, so if you want to learn more, you should check out their [article about color blindness](#).

Dichromacy





Tritanopia
15842763

Trichromacy



Original Color
15646901

Protanomaly
14468792

Deuteranomaly
15319732

Tritanomaly
15777475

Monochromacy



Original Color
15646901

Achromatopsia
13487565

Achromatomaly
14272708

CSS Examples

Text

The CSS property to change the color of the text to Decimal 15646901 is called "color". The color property can be set on classes, ids or directly on the HTML element.

This example shows how text in the color #EEC0B5 looks like.

```
.text, #text, p{  
  color:#EEC0B5  
}
```

If you want to add a text shadow in that color use the text-shadow property, you can generate a text shadow directly with our [CSS Text Shadow Generator](#).

Here you see how black text with a 4 pixel #EEC0B5 colored shadow looks like.

```
.shadow{ text-shadow: 4px 4px 2px #EEC0B5
}
```

Border

The CSS property to change the border of an element to Decimal 15646901 is called "border". The border property can be set on classes, ids or directly on the HTML element.

This example shows the color as border, it can be applied via the CSS property "border" or "border-color".

```
.border, #border, table{ border:4px solid
#EEC0B5 }
```

If only the border color should be changed use the property `border-color`.

```
.border{ border-color:#EEC0B5 }
```

If you want to add a box shadow in that color use:

Here you see how a box with a 4 pixel #EEC0B5 colored shadow looks like.

```
.boxshadow{ -moz-box-shadow:4px 4px 4px  
4px #EEC0B5; -webkit-box-shadow:4px 4px  
4px 4px #EEC0B5; box-shadow:4px 4px 4px  
4px #EEC0B5 }
```

Background

The CSS property to change the background color of an element to Decimal 15646901 is called "background". The background property can be set on classes, ids or directly on the HTML element.

```
.background, #background, body{  
background:#EEC0B5 }
```

If only the background color should be changed can be used:

```
.background{ background-color:#EEC0B5 }
```

This example shows the color as background, it is applied via the CSS property "background".

To optimize and compress your CSS code, you can use our [online CSS compressor and optimizer](#) based on csstidy. If you want to create a linear or radial gradient as background or border, check our [CSS Gradient Generator](#).

Hey! You found this booklet interesting? Support Converting Colors with the new Membership Option!

The pro membership hides all ads, plus gives you double the colors in the color bucket, and more awesome pro features!

[Learn more, Memberships starting at \\$2.50/m!](#)

**Follow me
on Twitter!**

@ConvertingColor