

Converting Colors

Decimal(15651536)

Have a look what the booklet for
Decimal(15651536) contains.

Decimal(15651536)	3
<i>Conversions</i>	4
<i>Details</i>	6
<i>Harmonies</i>	11
<i>Previews</i>	23
<i>Color Blindness Simulation</i>	26
<i>CSS Examples</i>	29

Color

Decimal(15651536)

Conversions

Conversions Part 1

Format	Color
Hex	EED2D0
RGB	238, 210, 208
RGB Percent	93%, 82%, 82%
CMY	0.0667, 0.1765, 0.1843
CMYK	0.00, 0.12, 0.13, 0.07
HSL	4°, 47%, 87%
HSV	4°, 13%, 93%
XYZ	69.6917, 68.8244, 69.2858
YIQ	218.1440, 17.3300, 5.3140

Conversions

Conversions Part 2

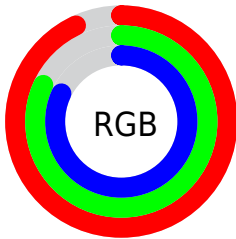
Format	Color
R _Y B	238, 210, 208
Decimal	15651536
CIE Lab	86.42, 9.42, 4.56
CIE LCh	86, 10.461, 25.819
Yxy	68.8244, 0.3354, 0.3312
Android (android.graphics.Color)	4293841616 (0xFFEED2D0)
YUV	218.1440, -5.0010, 17.4137
Hunter-Lab	82.9605, 4.7696, 8.5553

Details

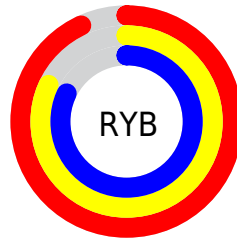
The Decimal color **15651536** is a light color, and the websafe version is hex **FFCCCC**. A complement of this color would be **13692142**, and the grayscale version is **14342874**.

A 20% lighter version of the original color is **16777215**, and **11967642** is the 20% darker color. If you saturate the color by 10%, you get **15645880**, and if you desaturate by 10%, it is **15657192**.

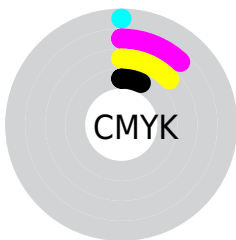
Distribution



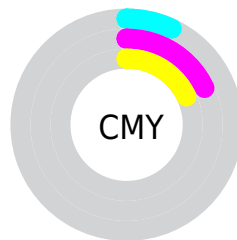
- Red (93%)
- Green (82%)
- Blue (82%)



- Red (93%)
- Yellow (82%)
- Blue (82%)



- Cyan (0%)
- Magenta (12%)
- Yellow (13%)
- Black (7%)



- Cyan (7%)
- Magenta (18%)
- Yellow (18%)

Brightness & Saturation Gradients

These gradients show how the Decimal color 15651536 changes by changing the brightness by 10 percent. The first figure shows a shift by +10% for each color and the second figure -10%.

Similar to the brightness gradients but the following saturation gradients show a change of the Decimal color 15651536 by changing the saturation by 10% instead.

15651536

15651536

16777215

13809332

11967642

10191232

8480871

6770767

5191992

3679267

2232077

0

 15651536

 15651536

 15645880

 15657192

 15640224

 15662847

 15634313

 15663103

 15628657

 15623001

 15617345

 15611689

 15605778

 15601664

Harmonies

Analogous

The Analogous color harmony consists of three colors that are next to each other on the color wheel.



15520474



15651536



15389896

Triad

The Triadic color harmony groups three colors that are evenly spaced from another and form a triangle on the color wheel.



15651536



13426125



13425132

Complementary

The Complementary color scheme is a pair of colors which are on the opposite of each other on the color wheel.



15651536



13692142

Split Complementary

Split-complementary colors differ from the complementary color scheme. The scheme consists of three colors, the original color and two neighbors of the complement color.



12836072



15651536



12836566

Square

The Square scheme is like the rectangle color scheme, but the four colors are evenly spaced on the color wheel.



15651536



14146246



12639968



14276330

Rectangle

The Rectangle color scheme consists of four colors that form a rectangle on the color wheel.



15651536



15062725



12639968



13229035

Sweetspot

The Sweet Spot groups the original color and five complimentary colors.



15651536



16774645



15651052



8419961



0



8421504

Same Dimension

The Same Dimension uses a secret algorithm to generate beautiful new colors.



15651536



16767961



15655120



7892332



12061696



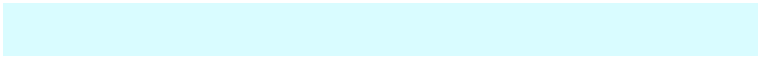
3671040

Inverse Universe

The Inverse Universe completely reimagines the original color for something new.



13692142



14286079



13688302



7108472



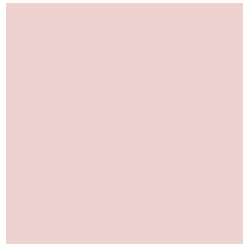
43960



13368

Previews

White Background



This preview shows how the Decimal color 15651536 looks on a white background.

Color Contrast Check

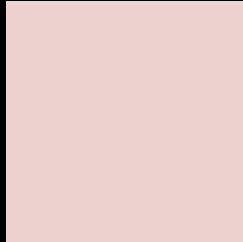
Large Text (above 18pt) WCAG AA × Fail

Any Text WCAG AA × Fail

Large Text (above 18pt) WCAG AAA × Fail

Any Text WCAG AAA × Fail

Black Background



This preview shows how the Decimal color 15651536 looks on a black background.

Color Contrast Check

Large Text (above 18pt) WCAG AA ✓ Pass

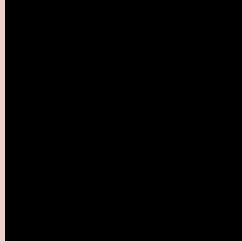
Any Text WCAG AA ✓ Pass

Large Text (above 18pt) WCAG AAA ✓ Pass

Any Text WCAG AAA ✓ Pass

If you want to check with other color combinations, try the [Color Contrast Checker](#).

Decimal 15651536 Background



This preview shows how black text looks on a background with the Decimal color 15651536.



This preview shows how white text looks on a background with the Decimal color 15651536.

Color Blindness Simulation

Color vision deficiency is a very complex topic, and I could not describe the different causes any better than Wikipedia does, so if you want to learn more, you should check out their [article about color blindness](#).

Dichromacy





Tritanopia
15782112

Trichromacy



Original Color
15651536

Protanomaly
14931410

Deuteranomaly
15716816

Tritanomaly
15716826

Monochromacy



Original Color
15651536

Achromatopsia
14342874

Achromatomaly
14800854

CSS Examples

Text

The CSS property to change the color of the text to Decimal 15651536 is called "color". The color property can be set on classes, ids or directly on the HTML element.

This example shows how text in the color #EED2D0 looks like.

```
.text, #text, p{  
    color:#EED2D0  
}
```

If you want to add a text shadow in that color use the text-shadow property, you can generate a text shadow directly with our [CSS Text Shadow Generator](#).

Here you see how black text with a 4 pixel #EED2D0 colored shadow looks like.

```
.shadow{ text-shadow: 4px 4px 2px #EED2D0  
}
```

Border

The CSS property to change the border of an element to Decimal 15651536 is called "border". The border property can be set on classes, ids or directly on the HTML element.

This example shows the color as border, it can be applied via the CSS property "border" or "border-color".

```
.border, #border, table{ border:4px solid  
#EED2D0 }
```

If only the border color should be changed use the property `border-color`.

```
.border{ border-color:#EED2D0 }
```

If you want to add a box shadow in that color use:

Here you see how a box with a 4 pixel #EED2D0 colored shadow looks like.

```
.boxshadow{ -moz-box-shadow:4px 4px 4px  
4px #EED2D0; -webkit-box-shadow:4px 4px  
4px 4px #EED2D0; box-shadow:4px 4px 4px  
4px #EED2D0 }
```

Background

The CSS property to change the background color of an element to Decimal 15651536 is called "background". The background property can be set on classes, ids or directly on the HTML element.

```
.background, #background, body{  
background:#EED2D0 }
```

If only the background color should be changed can be used:

```
.background{ background-color:#EED2D0 }
```

This example shows the color as background, it is applied via the CSS property "background".

To optimize and compress your CSS code, you can use our [online CSS compressor and optimizer](#) based on csstidy. If you want to create a linear or radial gradient as background or border, check our [CSS Gradient Generator](#).

Hey! You found this booklet interesting? Support Converting Colors with the new Membership Option!

The pro membership hides all ads, plus gives you double the colors in the color bucket, and more awesome pro features!

[Learn more, Memberships starting at \\$2.50/m!](#)

**Follow me
on Twitter!**

@ConvertingColor