

# Converting Colors

Decimal(15652815)

Have a look what the booklet for  
Decimal(15652815) contains.

<b>Decimal(15652815)</b> .....	3
<i><b>Conversions</b></i> .....	4
<i><b>Details</b></i> .....	6
<i><b>Harmonies</b></i> .....	11
<i><b>Previews</b></i> .....	23
<i><b>Color Blindness Simulation</b></i> .....	26
<i><b>CSS Examples</b></i> .....	29

# **Color**

**Decimal(15652815)**

# Conversions

## Conversions Part 1

Format	Color
Hex	EED7CF
RGB	238, 215, 207
RGB Percent	93%, 84%, 81%
CMY	0.0667, 0.1569, 0.1882
CMYK	0.00, 0.10, 0.13, 0.07
HSL	15°, 48%, 87%
HSV	15°, 13%, 93%
XYZ	70.8228, 71.2830, 69.0577
YIQ	220.9650, 16.2760, 2.3880

# Conversions

## Conversions Part 2

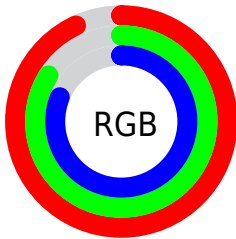
Format	Color
R <sub>Y</sub> B	238, 218, 207
Decimal	15652815
CIE Lab	87.62, 6.65, 6.82
CIE LCh	88, 9.526, 45.746
Yxy	71.2830, 0.3354, 0.3376
Android (android.graphics.Color)	4293842895 (0xFFEED7CF)
YUV	220.9650, -6.8847, 14.9397
Hunter-Lab	84.4293, 1.9821, 10.6051

# Details

The Decimal color **15652815** is a light color, and the websafe version is hex **CCCCCC**. A complement of this color would be **13625070**, and the grayscale version is **14540253**.

A 20% lighter version of the original color is **16777215**, and **11968665** is the 20% darker color. If you saturate the color by 10%, you get **15648183**, and if you desaturate by 10%, it is **15657447**.

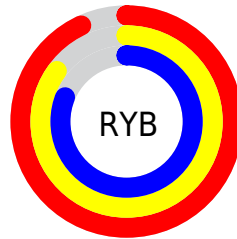
# Distribution



Red (93%)

Green (84%)

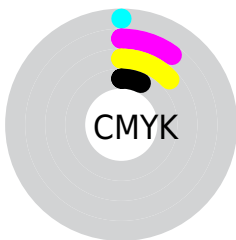
Blue (81%)



Red (93%)

Yellow (85%)

Blue (81%)

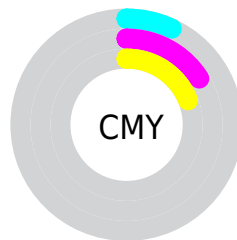


Cyan (0%)

Magenta (10%)

Yellow (13%)

Black (7%)



Cyan (7%)

Magenta (16%)

Yellow (19%)

# Brightness & Saturation Gradients

These gradients show how the Decimal color 15652815 changes by changing the brightness by 10 percent. The first figure shows a shift by +10% for each color and the second figure -10%.

Similar to the brightness gradients but the following saturation gradients show a change of the Decimal color 15652815 by changing the saturation by 10% instead.



15652815

15652815

16777215

13810611

11968665

10192511

8482150

6772046

5193015

3680290

2233099

0

 15652815

 15652815

 15648183

 15657447

 15643807

 15661823

 15639176

 15663103

 15634544

 15630168

 15625536

 15620904

 15616529

 15613184

# Harmonies

## Analogous

The Analogous color harmony consists of three colors that are next to each other on the color wheel.



15783639



15652815



15260362

# Triad

The Triadic color harmony groups three colors that are evenly spaced from another and form a triangle on the color wheel.



15652815



13361623



14212077

# Complementary

The Complementary color scheme is a pair of colors which are on the opposite of each other on the color wheel.



15652815



13625070

# Split Complementary

Split-complementary colors differ from the complementary color scheme. The scheme consists of three colors, the original color and two neighbors of the complement color.



13557485



15652815



13033952

# Square

The Square scheme is like the rectangle color scheme, but the four colors are evenly spaced on the color wheel.



15652815



13950927



13099240



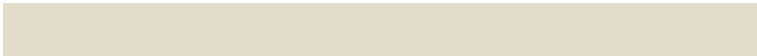
14932200

# Rectangle

The Rectangle color scheme consists of four colors that form a rectangle on the color wheel.



15652815



14867658



13099240



14015725



# Sweetspot

The Sweet Spot groups the original color and five complimentary colors.



15652815



16775157



15650790



8420217



0



8421504

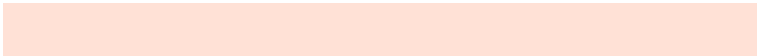


# Same Dimension

The Same Dimension uses a secret algorithm to generate beautiful new colors.



15652815



16769494



15656655



7892844



12070656



3673600

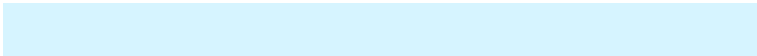


# Inverse Universe

The Inverse Universe completely reimagines the original color for something new.



13625070



14087423



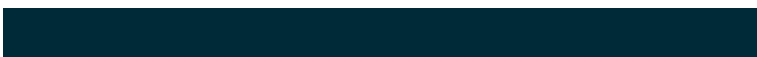
13621230



7107960



35000

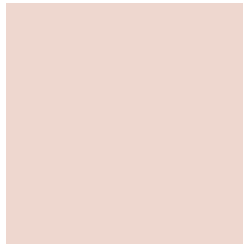


10808



# Previews

## White Background



This preview shows how the Decimal color 15652815 looks on a white background.

## Color Contrast Check

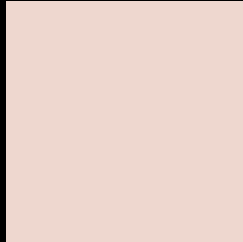
Large Text (above 18pt) WCAG AA × Fail

Any Text WCAG AA × Fail

Large Text (above 18pt) WCAG AAA × Fail

Any Text WCAG AAA × Fail

# Black Background



This preview shows how the Decimal color 15652815 looks on a black background.

## Color Contrast Check

Large Text (above 18pt) WCAG AA ✓ Pass

Any Text WCAG AA ✓ Pass

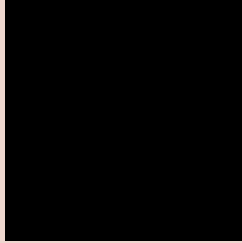
Large Text (above 18pt) WCAG AAA ✓ Pass

Any Text WCAG AAA ✓ Pass

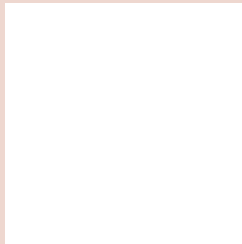
If you want to check with other color combinations, try the [Color Contrast Checker](#).



## Decimal 15652815 Background



This preview shows how black text looks on a background with the Decimal color 15652815.

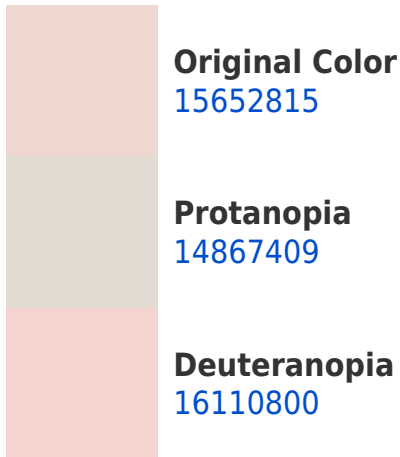


This preview shows how white text looks on a background with the Decimal color 15652815.

# Color Blindness Simulation

Color vision deficiency is a very complex topic, and I could not describe the different causes any better than Wikipedia does, so if you want to learn more, you should check out their [article about color blindness](#).

## Dichromacy





**Tritanopia**  
15848676

# Trichromacy



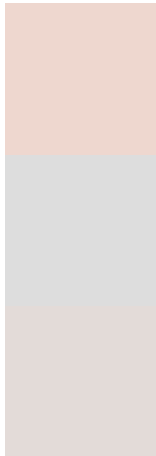
**Original Color**  
15652815

**Protanomaly**  
15129296

**Deuteranomaly**  
15914448

**Tritanomaly**  
15783388

# Monochromacy



**Original Color**  
15652815

**Achromatopsia**  
14540253

**Achromatomaly**  
14932952

# CSS Examples

## Text

The CSS property to change the color of the text to Decimal 15652815 is called "color". The color property can be set on classes, ids or directly on the HTML element.

This example shows how text in the color #EED7CF looks like.

```
.text, #text, p{  
    color:#EED7CF  
}
```

If you want to add a text shadow in that color use the text-shadow property, you can generate a text shadow directly with our [CSS Text Shadow Generator](#).

Here you see how black text with a 4 pixel #EED7CF colored shadow looks like.

```
.shadow{ text-shadow: 4px 4px 2px #EED7CF
}
```

## Border

The CSS property to change the border of an element to Decimal 15652815 is called "border". The border property can be set on classes, ids or directly on the HTML element.

This example shows the color as border, it can be applied via the CSS property "border" or "border-color".

```
.border, #border, table{ border:4px solid
#EED7CF }
```

If only the border color should be changed use the property `border-color`.

```
.border{ border-color:#EED7CF }
```

If you want to add a box shadow in that color use:

Here you see how a box with a 4 pixel #EED7CF colored shadow looks like.

```
.boxshadow{ -moz-box-shadow:4px 4px 4px  
4px #EED7CF; -webkit-box-shadow:4px 4px  
4px 4px #EED7CF; box-shadow:4px 4px 4px  
4px #EED7CF }
```

# Background

The CSS property to change the background color of an element to Decimal 15652815 is called "background". The background property can be set on classes, ids or directly on the HTML element.

```
.background, #background, body{  
background:#EED7CF }
```

If only the background color should be changed can be used:

```
.background{ background-color:#EED7CF }
```

This example shows the color as background, it is applied via the CSS property "background".

To optimize and compress your CSS code, you can use our [online CSS compressor and optimizer](#) based on csstidy. If you want to create a linear or radial gradient as background or border, check our [CSS Gradient Generator](#).



Hey! You found this booklet interesting? Support Converting Colors with the new Membership Option!

The pro membership hides all ads, plus gives you double the colors in the color bucket, and more awesome pro features!

**[Learn more, Memberships starting at \\$2.50/m!](#)**

**Follow me  
on Twitter!**

@ConvertingColor