

Converting Colors

Decimal(15680131)

Have a look what the booklet for
Decimal(15680131) contains.

Decimal(15680131)	3
<i>Conversions</i>	4
<i>Details</i>	6
<i>Harmonies</i>	11
<i>Previews</i>	23
<i>Color Blindness Simulation</i>	26
<i>CSS Examples</i>	29

Color

Decimal(15680131)

Conversions

Conversions Part 1

Format	Color
Hex	EF4283
RGB	239, 66, 131
RGB Percent	94%, 26%, 51%
CMY	0.0627, 0.7412, 0.4863
CMYK	0.00, 0.72, 0.45, 0.06
HSL	337°, 84%, 60%
HSV	337°, 72%, 94%
XYZ	41.6416, 23.8858, 23.8884
YIQ	125.1370, 82.2430, 56.8910

Conversions

Conversions Part 2

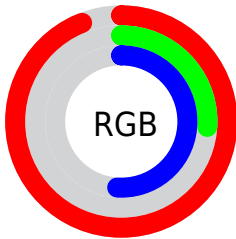
Format	Color
R_{YB}	239, 66, 131
Decimal	15680131
CIE _{Lab}	55.97, 69.52, 3.47
CIE _{LCh}	56, 69.608, 2.854
Yxy	23.8858, 0.4657, 0.2671
Android (android.graphics.Color)	4293870211 (0xFFEF4283)
YUV	125.1370, 2.8905, 99.8579
Hunter-Lab	48.8731, 66.5599, 5.2312

Details

The Decimal color **15680131** is a dark color, and the websafe version is hex **FF6699**. The color can be described as middle muted rose. A complement of this color would be **4386734**, and the grayscale version is **8224125**.

A 20% lighter version of the original color is **16744376**, and **11599954** is the 20% darker color. If you saturate the color by 10%, you get **15673972**, and if you desaturate by 10%, it is **15686290**.

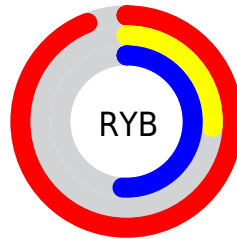
Distribution



Red (94%)

Green (26%)

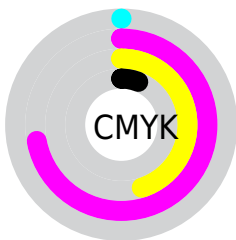
Blue (51%)



Red (94%)

Yellow (26%)

Blue (51%)

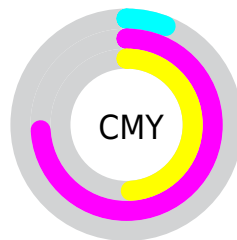


Cyan (0%)

Magenta (72%)

Yellow (45%)

Black (6%)



Cyan (6%)

Magenta (74%)

Yellow (49%)

Brightness & Saturation Gradients

These gradients show how the Decimal color 15680131 changes by changing the brightness by 10 percent. The first figure shows a shift by +10% for each color and the second figure -10%.

Similar to the brightness gradients but the following saturation gradients show a change of the Decimal color 15680131 by changing the saturation by 10% instead.

 15680131

 15680131

16777215

 13638506

 16744376

 11599954

 16751827

 9633851

 16759280

 7667750

 16766975

 5767185

 16774655

 3866626

 1310720

 0

 15680131

 15680131

15673972

15686290

15667813

15692449

15663194

15698608

15704767

15710670

15716829

15722987

15728634

15728639

Harmonies

Analogous

The Analogous color harmony consists of three colors that are next to each other on the color wheel.



13784254



15680131



15356232

Triad

The Triadic color harmony groups three colors that are evenly spaced from another and form a triangle on the color wheel.



15680131



6198530



39666

Complementary

The Complementary color scheme is a pair of colors which are on the opposite of each other on the color wheel.



15680131



4386734

Split Complementary

Split-complementary colors differ from the complementary color scheme. The scheme consists of three colors, the original color and two neighbors of the complement color.



41415



15680131



40523

Square

The Square scheme is like the rectangle color scheme, but the four colors are evenly spaced on the color wheel.



15680131



10257664



41354



36095

Rectangle

The Rectangle color scheme consists of four colors that form a rectangle on the color wheel.



15680131



14181410



41354



40422

Sweetspot

The Sweet Spot groups the original color and five complimentary colors.



15680131



16762844



11354863



8412779



0



8421504

Same Dimension

The Same Dimension uses a secret algorithm to generate beautiful new colors.



15680131



16720245



15685186



7892080



12058693



3670037

Inverse Universe

The Inverse Universe completely reimagines the original color for something new.



15680131



16720245



4381679



7892080



12058693



3670037

Previews

White Background



This preview shows how the Decimal color 15680131 looks on a white background.

Color Contrast Check

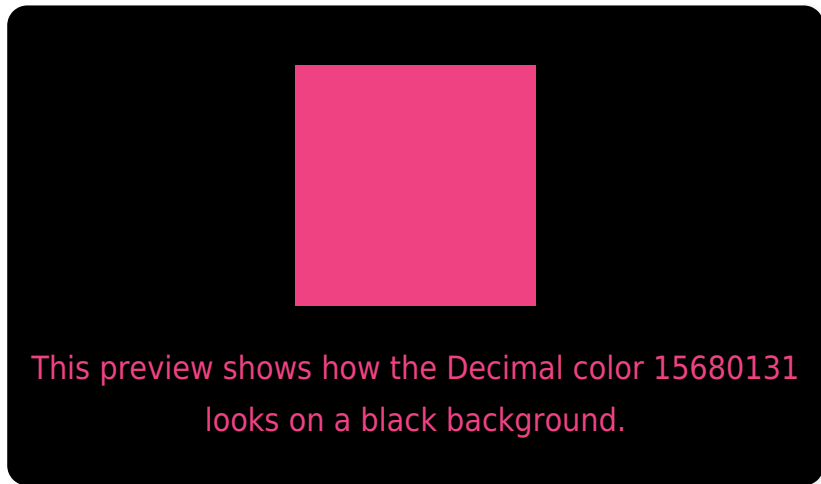
Large Text (above 18pt) WCAG AA ✓ Pass

Any Text WCAG AA × Fail

Large Text (above 18pt) WCAG AAA × Fail

Any Text WCAG AAA × Fail

Black Background



Color Contrast Check

Large Text (above 18pt) WCAG AA ✓ Pass

Any Text WCAG AA ✓ Pass

Large Text (above 18pt) WCAG AAA ✓ Pass

Any Text WCAG AAA × Fail

If you want to check with other color combinations, try the [Color Contrast Checker](#).

Decimal 15680131 Background



This preview shows how black text looks on a background with the Decimal color 15680131.

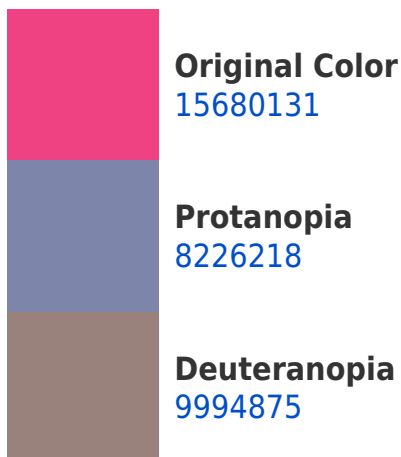


This preview shows how white text looks on a background with the Decimal color 15680131.

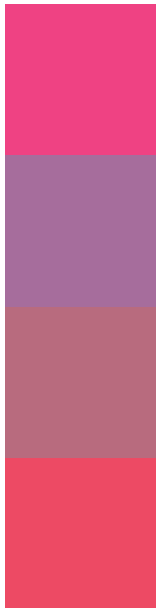
Color Blindness Simulation

Color vision deficiency is a very complex topic, and I could not describe the different causes any better than Wikipedia does, so if you want to learn more, you should check out their [article about color blindness](#).

Dichromacy



Trichromacy



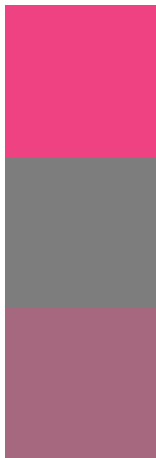
Original Color
15680131

Protanomaly
10907036

Deuteranomaly
12086142

Tritanomaly
15551076

Monochromacy



Original Color
15680131

Achromatopsia
8224125

Achromatomaly
10905727

CSS Examples

Text

The CSS property to change the color of the text to Decimal 15680131 is called "color". The color property can be set on classes, ids or directly on the HTML element.

This example shows how text in the color #EF4283 looks like.

```
.text, #text, p{  
    color:#EF4283  
}
```

If you want to add a text shadow in that color use the text-shadow property, you can generate a text shadow directly with our [CSS Text Shadow Generator](#).

Here you see how black text with a 4 pixel #EF4283 colored shadow looks like.

```
.shadow{ text-shadow: 4px 4px 2px #EF4283
}
```

Border

The CSS property to change the border of an element to Decimal 15680131 is called "border". The border property can be set on classes, ids or directly on the HTML element.

This example shows the color as border, it can be applied via the CSS property "border" or "border-color".

```
.border, #border, table{ border:4px solid
#EF4283 }
```

If only the border color should be changed use the property `border-color`.

```
.border{ border-color:#EF4283 }
```

If you want to add a box shadow in that color use:

Here you see how a box with a 4 pixel #EF4283 colored shadow looks like.

```
.boxshadow{ -moz-box-shadow:4px 4px 4px  
4px #EF4283; -webkit-box-shadow:4px 4px  
4px 4px #EF4283; box-shadow:4px 4px 4px  
4px #EF4283 }
```

Background

The CSS property to change the background color of an element to Decimal 15680131 is called "background". The background property can be set on classes, ids or directly on the HTML element.

```
.background, #background, body{  
background:#EF4283 }
```

If only the background color should be changed can be used:

```
.background{ background-color:#EF4283 }
```

This example shows the color as background, it is applied via the CSS property "background".

To optimize and compress your CSS code, you can use our [online CSS compressor and optimizer](#) based on csstidy. If you want to create a linear or radial gradient as background or border, check our [CSS Gradient Generator](#).

Hey! You found this booklet interesting? Support Converting Colors with the new Membership Option!

The pro membership hides all ads, plus gives you double the colors in the color bucket, and more awesome pro features!

[Learn more, Memberships starting at \\$2.50/m!](#)

**Follow me
on Twitter!**

@ConvertingColor