

Converting Colors

Decimal(15684723)

Have a look what the booklet for
Decimal(15684723) contains.

Decimal(15684723)	3
<i>Conversions</i>	4
<i>Details</i>	6
<i>Harmonies</i>	11
<i>Previews</i>	23
<i>Color Blindness Simulation</i>	26
<i>CSS Examples</i>	29

Color

Decimal(15684723)

Conversions

Conversions Part 1

Format	Color
Hex	EF5473
RGB	239, 84, 115
RGB Percent	94%, 33%, 45%
CMY	0.0627, 0.6706, 0.5490
CMYK	0.00, 0.65, 0.52, 0.06
HSL	348°, 83%, 63%
HSV	348°, 65%, 94%
XYZ	41.8614, 25.9292, 19.0181
YIQ	133.8790, 82.4290, 42.5010

Conversions

Conversions Part 2

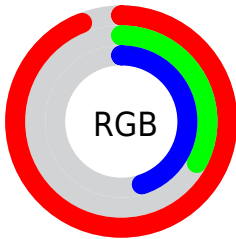
Format	Color
R _Y B	239, 84, 115
Decimal	15684723
CIE _{Lab}	57.97, 61.58, 15.74
CIE _{LCh}	58, 63.562, 14.334
Yxy	25.9292, 0.4822, 0.2987
Android (android.graphics.Color)	4293874803 (0xFFEF5473)
YUV	133.8790, -9.3073, 92.1911
Hunter-Lab	50.9207, 57.6320, 13.5005

Details

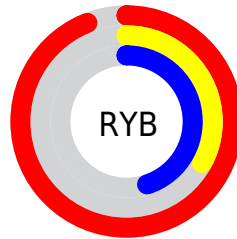
The Decimal color **15684723** is a dark color, and the websafe version is hex **CC3366**. The color can be described as middle muted rose. A complement of this color would be **5566416**, and the grayscale version is **8816262**.

A 20% lighter version of the original color is **16747943**, and **11603267** is the 20% darker color. If you saturate the color by 10%, you get **15678560**, and if you desaturate by 10%, it is **15690886**.

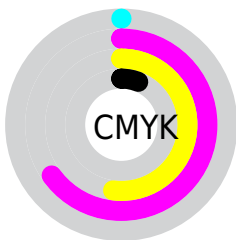
Distribution



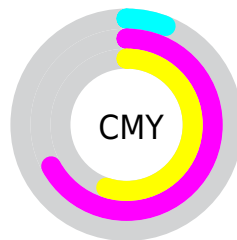
- Red (94%)
- Green (33%)
- Blue (45%)



- Red (94%)
- Yellow (33%)
- Blue (45%)



- Cyan (0%)
- Magenta (65%)
- Yellow (52%)
- Black (6%)



- Cyan (6%)
- Magenta (67%)
- Yellow (55%)

Brightness & Saturation Gradients

These gradients show how the Decimal color 15684723 changes by changing the brightness by 10 percent. The first figure shows a shift by +10% for each color and the second figure -10%.

Similar to the brightness gradients but the following saturation gradients show a change of the Decimal color 15684723 by changing the saturation by 10% instead.

 15684723

 15684723

16777215

 13645403

 16747943

 11603267

 16755394

 9633838

 16762590

 7667737

 16770298

 5767168

 3932163

 1376256

 0

 15684723

 15684723

■ 15678560

■ 15690886

■ 15672397

■ 15697049

■ 15666234

■ 15703212

■ 15663152

■ 15709375

■ 15715283

■ 15721446

■ 15727609

■ 15728639

Harmonies

Analogous

The Analogous color harmony consists of three colors that are next to each other on the color wheel.



14703019



15684723



14771775

Triad

The Triadic color harmony groups three colors that are evenly spaced from another and form a triangle on the color wheel.



15684723



5020981



39671

Complementary

The Complementary color scheme is a pair of colors which are on the opposite of each other on the color wheel.



15684723



5566416

Split Complementary

Split-complementary colors differ from the complementary color scheme. The scheme consists of three colors, the original color and two neighbors of the complement color.



41944



15684723



41835

Square

The Square scheme is like the rectangle color scheme, but the four colors are evenly spaced on the color wheel.



15684723



9277697



42405



4753912

Rectangle

The Rectangle color scheme consists of four colors that form a rectangle on the color wheel.



15684723



13399584



42405



40687

Sweetspot

The Sweet Spot groups the original color and five complimentary colors.



15684723



16764888



13653231



8413800



0



8421504

Same Dimension

The Same Dimension uses a secret algorithm to generate beautiful new colors.



15684723



16726112



15696468



7892078



12058661



3670027

Inverse Universe

The Inverse Universe completely reimagines the original color for something new.



15684723



16726112



5554415



7892078



12058661



3670027

Previews

White Background



This preview shows how the Decimal color 15684723 looks on a white background.

Color Contrast Check

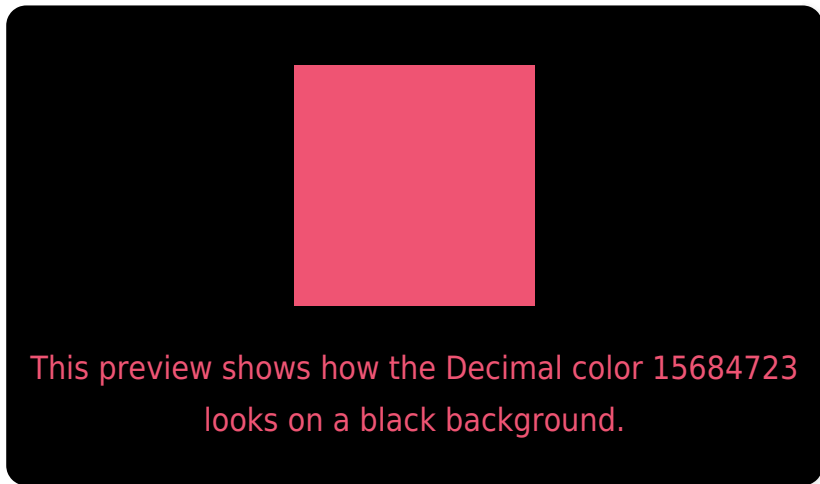
Large Text (above 18pt) WCAG AA ✓ Pass

Any Text WCAG AA ✗ Fail

Large Text (above 18pt) WCAG AAA ✗ Fail

Any Text WCAG AAA ✗ Fail

Black Background



Color Contrast Check

Large Text (above 18pt) WCAG AA ✓ Pass

Any Text WCAG AA ✓ Pass

Large Text (above 18pt) WCAG AAA ✓ Pass

Any Text WCAG AAA × Fail

If you want to check with other color combinations, try the [Color Contrast Checker](#).

Decimal 15684723 Background



This preview shows how black text looks on a background with the Decimal color 15684723.

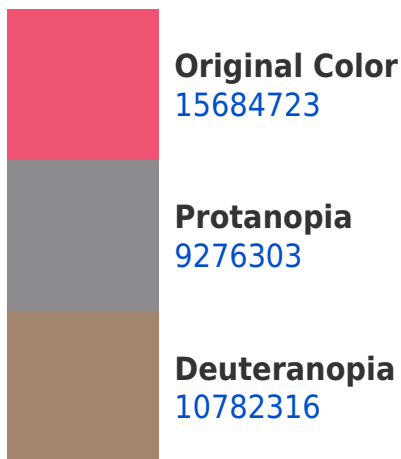


This preview shows how white text looks on a background with the Decimal color 15684723.

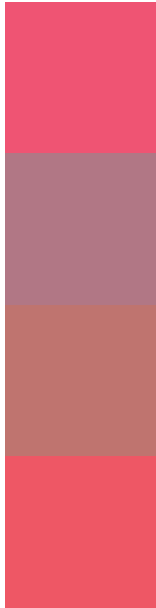
Color Blindness Simulation

Color vision deficiency is a very complex topic, and I could not describe the different causes any better than Wikipedia does, so if you want to learn more, you should check out their [article about color blindness](#).

Dichromacy



Trichromacy



Original Color
15684723

Protanomaly
11630469

Deuteranomaly
12547183

Tritanomaly
15619941

Monochromacy



Original Color
15684723

Achromatopsia
8816262

Achromatomaly
11302015

CSS Examples

Text

The CSS property to change the color of the text to Decimal 15684723 is called "color". The color property can be set on classes, ids or directly on the HTML element.

This example shows how text in the color #EF5473 looks like.

```
.text, #text, p{  
    color:#EF5473  
}
```

If you want to add a text shadow in that color use the text-shadow property, you can generate a text shadow directly with our [CSS Text Shadow Generator](#).

Here you see how black text with a 4 pixel #EF5473 colored shadow looks like.

```
.shadow{ text-shadow: 4px 4px 2px #EF5473
}
```

Border

The CSS property to change the border of an element to Decimal 15684723 is called "border". The border property can be set on classes, ids or directly on the HTML element.

This example shows the color as border, it can be applied via the CSS property "border" or "border-color".

```
.border, #border, table{ border:4px solid
#EF5473 }
```

If only the border color should be changed use the property `border-color`.

```
.border{ border-color:#EF5473 }
```

If you want to add a box shadow in that color use:

Here you see how a box with a 4 pixel #EF5473 colored shadow looks like.

```
.boxshadow{ -moz-box-shadow:4px 4px 4px  
4px #EF5473; -webkit-box-shadow:4px 4px  
4px 4px #EF5473; box-shadow:4px 4px 4px  
4px #EF5473 }
```

Background

The CSS property to change the background color of an element to Decimal 15684723 is called "background". The background property can be set on classes, ids or directly on the HTML element.

```
.background, #background, body{  
background:#EF5473 }
```

If only the background color should be changed can be used:

```
.background{ background-color:#EF5473 }
```

This example shows the color as background, it is applied via the CSS property "background".

To optimize and compress your CSS code, you can use our [online CSS compressor and optimizer](#) based on csstidy. If you want to create a linear or radial gradient as background or border, check our [CSS Gradient Generator](#).

Hey! You found this booklet interesting? Support Converting Colors with the new Membership Option!

The pro membership hides all ads, plus gives you double the colors in the color bucket, and more awesome pro features!

[Learn more, Memberships starting at \\$2.50/m!](#)

**Follow me
on Twitter!**

@ConvertingColor