

# Converting Colors

Decimal(15684991)

Have a look what the booklet for  
Decimal(15684991) contains.

<b>Decimal(15684991)</b> .....	3
<i><b>Conversions</b></i> .....	4
<i><b>Details</b></i> .....	6
<i><b>Harmonies</b></i> .....	11
<i><b>Previews</b></i> .....	23
<i><b>Color Blindness Simulation</b></i> .....	26
<i><b>CSS Examples</b></i> .....	29

# Color

**Decimal(15684991)**

# Conversions

## Conversions Part 1

<b>Format</b>	<b>Color</b>
Hex	EF557F
RGB	239, 85, 127
RGB Percent	94%, 33%, 50%
CMY	0.0627, 0.6667, 0.5020
CMYK	0.00, 0.64, 0.47, 0.06
HSL	344°, 83%, 64%
HSV	344°, 64%, 94%
XYZ	42.6759, 26.3800, 22.9213
YIQ	135.8340, 78.3020, 45.7100

# Conversions

## Conversions Part 2

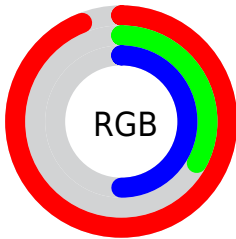
<b>Format</b>	<b>Color</b>
<b>R<sub>YB</sub></b>	239, 85, 127
Decimal	15684991
CIE Lab	58.40, 62.20, 9.29
CIE LCh	58, 62.888, 8.499
Yxy	26.3800, 0.4640, 0.2868
Android (android.graphics.Color)	4293875071 (0xFFEF557F)
YUV	135.8340, -4.3552, 90.4766
Hunter-Lab	51.3615, 58.4317, 9.4935

# Details

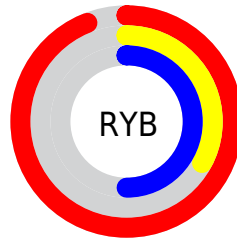
The Decimal color **15684991** is a dark color, and the websafe version is hex **FF6699**. The color can be described as middle muted rose. A complement of this color would be **5631941**, and the grayscale version is **8947848**.

A 20% lighter version of the original color is **16748212**, and **11669070** is the 20% darker color. If you saturate the color by 10%, you get **15678830**, and if you desaturate by 10%, it is **15691152**.

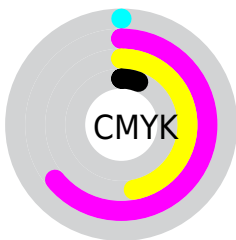
# Distribution



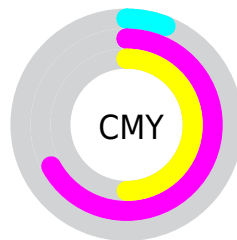
- Red (94%)
- Green (33%)
- Blue (50%)



- Red (94%)
- Yellow (33%)
- Blue (50%)



- Cyan (0%)
- Magenta (64%)
- Yellow (47%)
- Black (6%)



- Cyan (6%)
- Magenta (67%)
- Yellow (50%)

# Brightness & Saturation Gradients

These gradients show how the Decimal color 15684991 changes by changing the brightness by 10 percent. The first figure shows a shift by +10% for each color and the second figure -10%.

Similar to the brightness gradients but the following saturation gradients show a change of the Decimal color 15684991 by changing the saturation by 10% instead.



 15684991

 15684991

16777215

 13645670

 16748212

 11669070

 16755663

 9699384

 16763115

 7733283

 16770559

 5832717

 3997699

 1638401

 0

 15684991

 15684991

■ 15678830

■ 15691152

■ 15672668

■ 15697314

■ 15666507

■ 15703475

■ 15663169

■ 15709637

■ 15715542

■ 15721703

■ 15727865

■ 15728639

# Harmonies

## Analogous

The Analogous color harmony consists of three colors that are next to each other on the color wheel.



14311094



15684991



15098699

# Triad

The Triadic color harmony groups three colors that are evenly spaced from another and form a triangle on the color wheel.



15684991



6200365



40435

# Complementary

The Complementary color scheme is a pair of colors which are on the opposite of each other on the color wheel.



15684991



5631941

# Split Complementary

Split-complementary colors differ from the complementary color scheme. The scheme consists of three colors, the original color and two neighbors of the complement color.



42448



15684991



41826

# Square

The Square scheme is like the rectangle color scheme, but the four colors are evenly spaced on the color wheel.



15684991



10063618



42651



1806074

# Rectangle

The Rectangle color scheme consists of four colors that form a rectangle on the color wheel.



15684991



13923116



42651



41194



# Sweetspot

The Sweet Spot groups the original color and five complimentary colors.



15684991



16764892



12801519



8413802



0



8421504



# Same Dimension

The Same Dimension uses a secret algorithm to generate beautiful new colors.



15684991



16726896



15693397



7892079



12058674



3670031



# Inverse Universe

The Inverse Universe completely reimagines the original color for something new.



15684991



16726896



5623535



7892079



12058674



3670031



# Previews

## White Background



This preview shows how the Decimal color 15684991 looks on a white background.

## Color Contrast Check

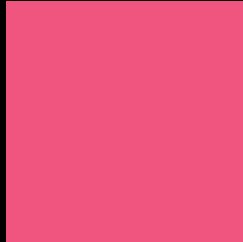
Large Text (above 18pt) WCAG AA ✓ Pass

Any Text WCAG AA × Fail

Large Text (above 18pt) WCAG AAA × Fail

Any Text WCAG AAA × Fail

# Black Background



This preview shows how the Decimal color 15684991 looks on a black background.

## Color Contrast Check

Large Text (above 18pt) WCAG AA ✓ Pass

Any Text WCAG AA ✓ Pass

Large Text (above 18pt) WCAG AAA ✓ Pass

Any Text WCAG AAA × Fail

If you want to check with other color combinations, try the [Color Contrast Checker](#).



## Decimal 15684991 Background



This preview shows how black text looks on a background with the Decimal color 15684991.

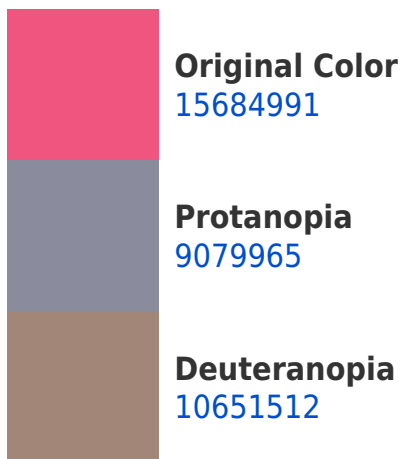


This preview shows how white text looks on a background with the Decimal color 15684991.

# Color Blindness Simulation

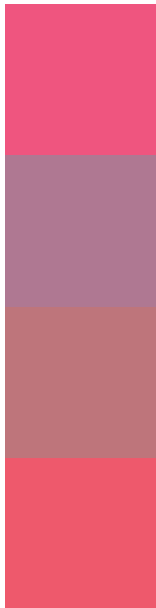
Color vision deficiency is a very complex topic, and I could not describe the different causes any better than Wikipedia does, so if you want to learn more, you should check out their [article about color blindness](#).

## Dichromacy





# Trichromacy



**Original Color**  
15684991

**Protanomaly**  
11499666

**Deuteranomaly**  
12481915

**Tritanomaly**  
15620460

# Monochromacy



**Original Color**  
15684991

**Achromatopsia**  
8947848

**Achromatomaly**  
11367813

# CSS Examples

## Text

The CSS property to change the color of the text to Decimal 15684991 is called "color". The color property can be set on classes, ids or directly on the HTML element.

This example shows how text in the color #EF557F looks like.

```
.text, #text, p{  
    color:#EF557F  
}
```

If you want to add a text shadow in that color use the text-shadow property, you can generate a text shadow directly with our [CSS Text Shadow Generator](#).

Here you see how black text with a 4 pixel #EF557F colored shadow looks like.

```
.shadow{ text-shadow: 4px 4px 2px #EF557F
}
```

## Border

The CSS property to change the border of an element to Decimal 15684991 is called "border". The border property can be set on classes, ids or directly on the HTML element.

This example shows the color as border, it can be applied via the CSS property "border" or "border-color".

```
.border, #border, table{ border:4px solid
#EF557F }
```

If only the border color should be changed use the property `border-color`.

```
.border{ border-color:#EF557F }
```

If you want to add a box shadow in that color use:

Here you see how a box with a 4 pixel #EF557F colored shadow looks like.

```
.boxshadow{ -moz-box-shadow:4px 4px 4px  
4px #EF557F; -webkit-box-shadow:4px 4px  
4px 4px #EF557F; box-shadow:4px 4px 4px  
4px #EF557F }
```

# Background

The CSS property to change the background color of an element to Decimal 15684991 is called "background". The background property can be set on classes, ids or directly on the HTML element.

```
.background, #background, body{  
background:#EF557F }
```

If only the background color should be changed can be used:

```
.background{ background-color:#EF557F }
```

This example shows the color as background, it is applied via the CSS property "background".

To optimize and compress your CSS code, you can use our [online CSS compressor and optimizer](#) based on csstidy. If you want to create a linear or radial gradient as background or border, check our [CSS Gradient Generator](#).



Hey! You found this booklet interesting? Support Converting Colors with the new Membership Option!

The pro membership hides all ads, plus gives you double the colors in the color bucket, and more awesome pro features!

**[Learn more, Memberships starting at \\$2.50/m!](#)**

**Follow me  
on Twitter!**

@ConvertingColor