

Converting Colors

Decimal(15694740)

Have a look what the booklet for
Decimal(15694740) contains.

Decimal(15694740)	3
<i>Conversions</i>	4
<i>Details</i>	6
<i>Harmonies</i>	11
<i>Previews</i>	23
<i>Color Blindness Simulation</i>	26
<i>CSS Examples</i>	29

Color

Decimal(15694740)

Conversions

Conversions Part 1

Format	Color
Hex	EF7B94
RGB	239, 123, 148
RGB Percent	94%, 48%, 58%
CMY	0.0627, 0.5176, 0.4196
CMYK	0.00, 0.49, 0.38, 0.06
HSL	347°, 78%, 71%
HSV	347°, 49%, 94%
XYZ	48.0249, 34.6548, 32.1748
YIQ	160.5340, 61.1110, 32.3670

Conversions

Conversions Part 2

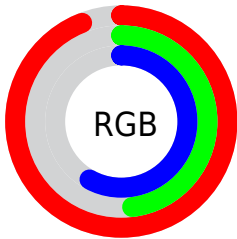
Format	Color
R _Y B	239, 123, 148
Decimal	15694740
CIE Lab	65.48, 47.04, 7.27
CIE LCh	65, 47.596, 8.783
Yxy	34.6548, 0.4181, 0.3017
Android (android.graphics.Color)	4293884820 (0xFFEF7B94)
YUV	160.5340, -6.1793, 68.8147
Hunter-Lab	58.8683, 42.6011, 8.8025

Details

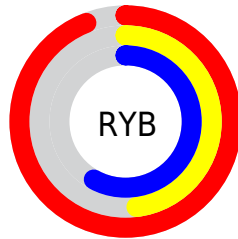
The Decimal color **15694740** is a light color, and the websafe version is hex **FF9999**. A complement of this color would be **8122326**, and the grayscale version is **10592673**.

A 20% lighter version of the original color is **16757450**, and **11814498** is the 20% darker color. If you saturate the color by 10%, you get **15688577**, and if you desaturate by 10%, it is **15700903**.

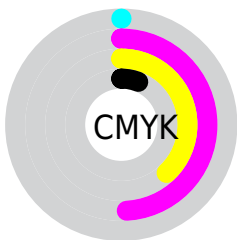
Distribution



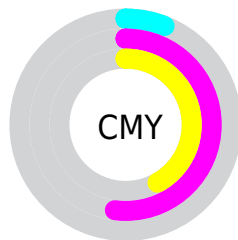
- Red (94%)
- Green (48%)
- Blue (58%)



- Red (94%)
- Yellow (48%)
- Blue (58%)



- Cyan (0%)
- Magenta (49%)
- Yellow (38%)
- Black (6%)



- Cyan (6%)
- Magenta (52%)
- Yellow (42%)

Brightness & Saturation Gradients

These gradients show how the Decimal color 15694740 changes by changing the brightness by 10 percent. The first figure shows a shift by +10% for each color and the second figure -10%.

Similar to the brightness gradients but the following saturation gradients show a change of the Decimal color 15694740 by changing the saturation by 10% instead.

 15694740

 15694740

16777215

 13721722

 16757450

 11814498

 16764646

 9907018

 16772095

 7997491

 6160415

 4456453

 2686977

 0

 15694740

 15694740

 15688577

 15700903

 15682415

 15707065

 15676252

 15713228

 15670089

 15719391

 15664182

 15725554

 15663156

 15728639

Harmonies

Analogous

The Analogous color harmony consists of three colors that are next to each other on the color wheel.



14516415



15694740



15303532

Triad

The Triadic color harmony groups three colors that are evenly spaced from another and form a triangle on the color wheel.



15694740



8301658



44270

Complementary

The Complementary color scheme is a pair of colors which are on the opposite of each other on the color wheel.



15694740



8122326

Split Complementary

Split-complementary colors differ from the complementary color scheme. The scheme consists of three colors, the original color and two neighbors of the complement color.



46035



15694740



4239999

Square

The Square scheme is like the rectangle color scheme, but the four colors are evenly spaced on the color wheel.



15694740



11313480



46507



7249907

Rectangle

The Rectangle color scheme consists of four colors that form a rectangle on the color wheel.



15694740



14388567



46507



45031

Sweetspot

The Sweet Spot groups the original color and five complimentary colors.



15694740



16767457



14056431



8415597



0



8421504

Same Dimension

The Same Dimension uses a secret algorithm to generate beautiful new colors.



15694740



16739211



15703163



7892078



12058664



3670028

Inverse Universe

The Inverse Universe completely reimagines the original color for something new.



15694740



16739211



8113903



7892078



12058664



3670028

Previews

White Background



This preview shows how the Decimal color 15694740 looks on a white background.

Color Contrast Check

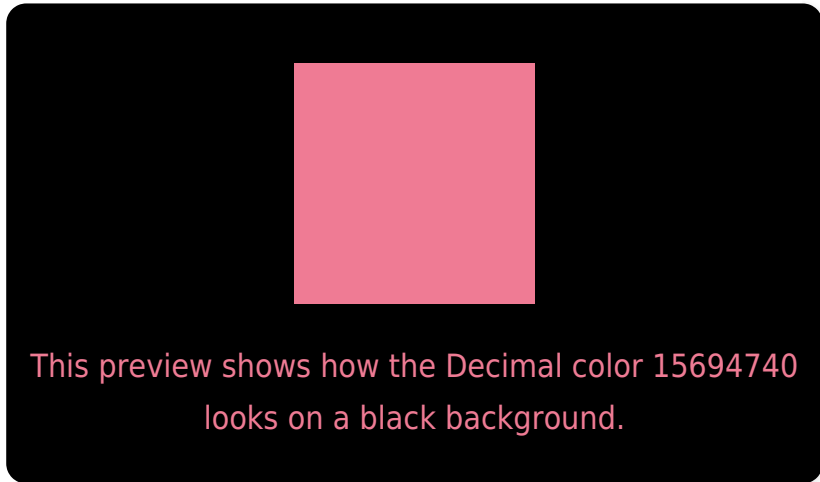
Large Text (above 18pt) WCAG AA × Fail

Any Text WCAG AA × Fail

Large Text (above 18pt) WCAG AAA × Fail

Any Text WCAG AAA × Fail

Black Background



Color Contrast Check

Large Text (above 18pt) WCAG AA ✓ Pass

Any Text WCAG AA ✓ Pass

Large Text (above 18pt) WCAG AAA ✓ Pass

Any Text WCAG AAA ✓ Pass

If you want to check with other color combinations, try the [Color Contrast Checker](#).

Decimal 15694740 Background



This preview shows how black text looks on a background with the Decimal color 15694740.



This preview shows how white text looks on a background with the Decimal color 15694740.

Color Blindness Simulation

Color vision deficiency is a very complex topic, and I could not describe the different causes any better than Wikipedia does, so if you want to learn more, you should check out their [article about color blindness](#).


Dichromacy



Original Color
15694740

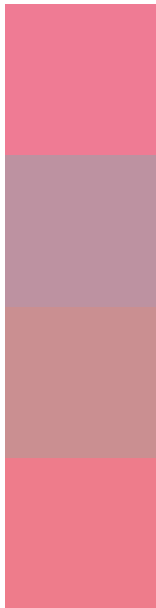
Protanopia
10526632

Deuteranopia
11901583



Tritanopia
15629702

Trichromacy



Original Color
15694740

Protanomaly
12423841

Deuteranomaly
13275025

Tritanomaly
15629451

Monochromacy



Original Color
15694740

Achromatopsia
10592673

Achromatomaly
12424092

CSS Examples

Text

The CSS property to change the color of the text to Decimal 15694740 is called "color". The color property can be set on classes, ids or directly on the HTML element.

This example shows how text in the color #EF7B94 looks like.

```
.text, #text, p{  
  color:#EF7B94  
}
```

If you want to add a text shadow in that color use the text-shadow property, you can generate a text shadow directly with our [CSS Text Shadow Generator](#).

Here you see how black text with a 4 pixel #EF7B94 colored shadow looks like.

```
.shadow{ text-shadow: 4px 4px 2px #EF7B94
}
```

Border

The CSS property to change the border of an element to Decimal 15694740 is called "border". The border property can be set on classes, ids or directly on the HTML element.

This example shows the color as border, it can be applied via the CSS property "border" or "border-color".

```
.border, #border, table{ border:4px solid
#EF7B94 }
```

If only the border color should be changed use the property `border-color`.

```
.border{ border-color:#EF7B94 }
```

If you want to add a box shadow in that color use:

Here you see how a box with a 4 pixel #EF7B94 colored shadow looks like.

```
.boxshadow{ -moz-box-shadow:4px 4px 4px  
4px #EF7B94; -webkit-box-shadow:4px 4px  
4px 4px #EF7B94; box-shadow:4px 4px 4px  
4px #EF7B94 }
```

Background

The CSS property to change the background color of an element to Decimal 15694740 is called "background". The background property can be set on classes, ids or directly on the HTML element.

```
.background, #background, body{  
background:#EF7B94 }
```

If only the background color should be changed can be used:

```
.background{ background-color:#EF7B94 }
```

This example shows the color as background, it is applied via the CSS property "background".

To optimize and compress your CSS code, you can use our [online CSS compressor and optimizer](#) based on csstidy. If you want to create a linear or radial gradient as background or border, check our [CSS Gradient Generator](#).

Hey! You found this booklet interesting? Support Converting Colors with the new Membership Option!

The pro membership hides all ads, plus gives you double the colors in the color bucket, and more awesome pro features!

[Learn more, Memberships starting at \\$2.50/m!](#)

**Follow me
on Twitter!**

@ConvertingColor