

Converting Colors

Decimal(15707064)

Have a look what the booklet for
Decimal(15707064) contains.

Decimal(15707064)	3
<i>Conversions</i>	4
<i>Details</i>	6
<i>Harmonies</i>	11
<i>Previews</i>	23
<i>Color Blindness Simulation</i>	26
<i>CSS Examples</i>	29

Color

Decimal(15707064)

Conversions

Conversions Part 1

Format	Color
Hex	EFABB8
RGB	239, 171, 184
RGB Percent	94%, 67%, 72%
CMY	0.0627, 0.3294, 0.2784
CMYK	0.00, 0.28, 0.23, 0.06
HSL	349°, 68%, 80%
HSV	349°, 28%, 94%
XYZ	58.8112, 50.9372, 52.0796
YIQ	192.8140, 36.3550, 18.4590

Conversions

Conversions Part 2

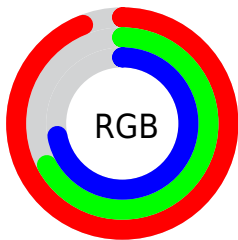
Format	Color
R _Y B	239, 171, 184
Decimal	15707064
CIE Lab	76.64, 26.75, 3.32
CIE LCh	77, 26.957, 7.065
Yxy	50.9372, 0.3634, 0.3148
Android (android.graphics.Color)	4293897144 (0xFFEFABB8)
YUV	192.8140, -4.3453, 40.5051
Hunter-Lab	71.3703, 22.1912, 6.6948

Details

The Decimal color **15707064** is a light color, and the websafe version is hex **CC9999**. A complement of this color would be **11268066**, and the grayscale version is **12698049**.

A 20% lighter version of the original color is **16770032**, and **11957891** is the 20% darker color. If you saturate the color by 10%, you get **15700901**, and if you desaturate by 10%, it is **15713227**.

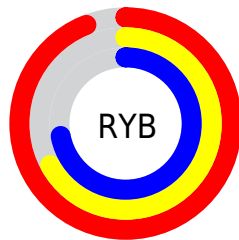
Distribution



Red (94%)

Green (67%)

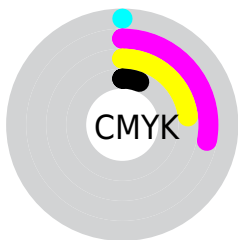
Blue (72%)



Red (94%)

Yellow (67%)

Blue (72%)

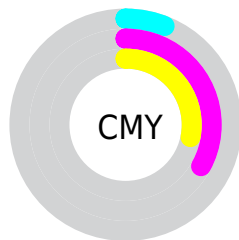


Cyan (0%)

Magenta (28%)

Yellow (23%)

Black (6%)



Cyan (6%)

Magenta (33%)

Yellow (28%)

Brightness & Saturation Gradients

These gradients show how the Decimal color 15707064 changes by changing the brightness by 10 percent. The first figure shows a shift by +10% for each color and the second figure -10%.

Similar to the brightness gradients but the following saturation gradients show a change of the Decimal color 15707064 by changing the saturation by 10% instead.

 15707064

 15707064

16777215

 13799581

 16770032

 11957891

 10116458

 8340818

 6630715

 4986405

 3342352

 1638401

 0

 15707064

 15707064

 15700901

 15713227

 15694737

 15719391

 15688574

 15725554

 15682411

 15728639

 15676247

 15670340

 15664177

 15663150

Harmonies

Analogous

The Analogous color harmony consists of three colors that are next to each other on the color wheel.



14855889



15707064



15642272

Triad

The Triadic color harmony groups three colors that are evenly spaced from another and form a triangle on the color wheel.



15707064



11453845



8832490

Complementary

The Complementary color scheme is a pair of colors which are on the opposite of each other on the color wheel.



15707064



11268066

Split Complementary

Split-complementary colors differ from the complementary color scheme. The scheme consists of three colors, the original color and two neighbors of the complement color.



7654106



15707064



9619881

Square

The Square scheme is like the rectangle color scheme, but the four colors are evenly spaced on the color wheel.



15707064



13286796



8113090



10993134

Rectangle

The Rectangle color scheme consists of four colors that form a rectangle on the color wheel.



15707064



15118996



8113090



8308710

Sweetspot

The Sweet Spot groups the original color and five complimentary colors.



15707064



16771308



14789615



8417652



0



8421504

Same Dimension

The Same Dimension uses a secret algorithm to generate beautiful new colors.



15707064



16754873



15712171



7892078



12058659



3670027

Inverse Universe

The Inverse Universe completely reimagines the original color for something new.



15707064



16754873



11262959



7892078



12058659



3670027

Previews

White Background



This preview shows how the Decimal color 15707064 looks on a white background.

Color Contrast Check

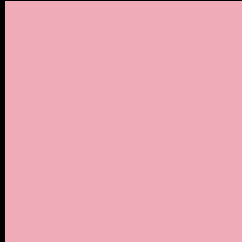
Large Text (above 18pt) WCAG AA × Fail

Any Text WCAG AA × Fail

Large Text (above 18pt) WCAG AAA × Fail

Any Text WCAG AAA × Fail

Black Background



This preview shows how the Decimal color 15707064 looks on a black background.

Color Contrast Check

Large Text (above 18pt) WCAG AA ✓ Pass

Any Text WCAG AA ✓ Pass

Large Text (above 18pt) WCAG AAA ✓ Pass

Any Text WCAG AAA ✓ Pass

If you want to check with other color combinations, try the [Color Contrast Checker](#).

Decimal 15707064 Background



This preview shows how black text looks on a background with the Decimal color 15707064.



This preview shows how white text looks on a background with the Decimal color 15707064.

Color Blindness Simulation

Color vision deficiency is a very complex topic, and I could not describe the different causes any better than Wikipedia does, so if you want to learn more, you should check out their [article about color blindness](#).

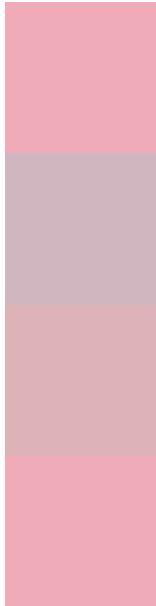
Dichromacy





Tritanopia
15707064

Trichromacy



Original Color
15707064

Protanomaly
13678270

Deuteranomaly
14529463

Tritanomaly
15707064

Monochromacy



Original Color
15707064

Achromatopsia
12698049

Achromatomaly
13810110

CSS Examples

Text

The CSS property to change the color of the text to Decimal 15707064 is called "color". The color property can be set on classes, ids or directly on the HTML element.

This example shows how text in the color #EFABB8 looks like.

```
.text, #text, p{  
  color:#EFABB8  
}
```

If you want to add a text shadow in that color use the text-shadow property, you can generate a text shadow directly with our [CSS Text Shadow Generator](#).

Here you see how black text with a 4 pixel #EFABB8 colored shadow looks like.

```
.shadow{ text-shadow: 4px 4px 2px #EFABB8  
}
```

Border

The CSS property to change the border of an element to Decimal 15707064 is called "border". The border property can be set on classes, ids or directly on the HTML element.

This example shows the color as border, it can be applied via the CSS property "border" or "border-color".

```
.border, #border, table{ border:4px solid  
#EFABB8 }
```

If only the border color should be changed use the property `border-color`.

```
.border{ border-color:#EFABB8 }
```

If you want to add a box shadow in that color use:

Here you see how a box with a 4 pixel #EFABB8 colored shadow looks like.

```
.boxshadow{ -moz-box-shadow:4px 4px 4px  
4px #EFABB8; -webkit-box-shadow:4px 4px  
4px 4px #EFABB8; box-shadow:4px 4px 4px  
4px #EFABB8 }
```

Background

The CSS property to change the background color of an element to Decimal 15707064 is called "background". The background property can be set on classes, ids or directly on the HTML element.

```
.background, #background, body{  
background:#EFABB8 }
```

If only the background color should be changed can be used:

```
.background{ background-color:#EFABB8 }
```

This example shows the color as background, it is applied via the CSS property "background".

To optimize and compress your CSS code, you can use our [online CSS compressor and optimizer](#) based on csstidy. If you want to create a linear or radial gradient as background or border, check our [CSS Gradient Generator](#).

Hey! You found this booklet interesting? Support Converting Colors with the new Membership Option!

The pro membership hides all ads, plus gives you double the colors in the color bucket, and more awesome pro features!

[Learn more, Memberships starting at \\$2.50/m!](#)

**Follow me
on Twitter!**

@ConvertingColor