

Converting Colors

Decimal(15712173)

Have a look what the booklet for
Decimal(15712173) contains.

Decimal(15712173)	3
<i>Conversions</i>	4
<i>Details</i>	6
<i>Harmonies</i>	11
<i>Previews</i>	23
<i>Color Blindness Simulation</i>	26
<i>CSS Examples</i>	29

Color

Decimal(15712173)

Conversions

Conversions Part 1

Format	Color
Hex	EFBFAD
RGB	239, 191, 173
RGB Percent	94%, 75%, 68%
CMY	0.0627, 0.2510, 0.3216
CMYK	0.00, 0.20, 0.28, 0.06
HSL	16°, 67%, 81%
HSV	16°, 28%, 94%
XYZ	61.7702, 58.6295, 47.5961
YIQ	203.3000, 34.3860, 4.5780

Conversions

Conversions Part 2

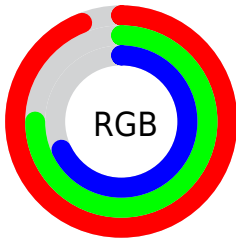
Format	Color
R _Y B	239, 198, 173
Decimal	15712173
CIE Lab	81.09, 14.61, 15.61
CIE LCh	81, 21.380, 46.877
Yxy	58.6295, 0.3677, 0.3490
Android (android.graphics.Color)	4293902253 (0xFFEFBFAD)
YUV	203.3000, -14.9379, 31.3089
Hunter-Lab	76.5699, 10.0017, 16.7440

Details

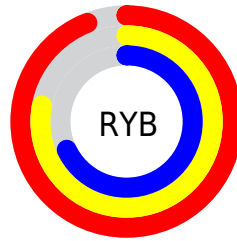
The Decimal color **15712173** is a light color, and the websafe version is hex **FFCCCC**. A complement of this color would be **11394543**, and the grayscale version is **13355979**.

A 20% lighter version of the original color is **16775140**, and **11962745** is the 20% darker color. If you saturate the color by 10%, you get **15707797**, and if you desaturate by 10%, it is **15716549**.

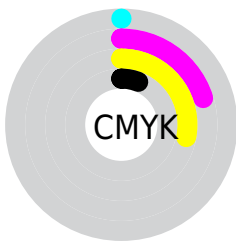
Distribution



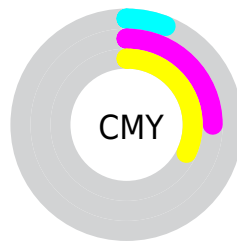
- Red (94%)
- Green (75%)
- Blue (68%)



- Red (94%)
- Yellow (78%)
- Blue (68%)



- Cyan (0%)
- Magenta (20%)
- Yellow (28%)
- Black (6%)



- Cyan (6%)
- Magenta (25%)
- Yellow (32%)

Brightness & Saturation Gradients

These gradients show how the Decimal color 15712173 changes by changing the brightness by 10 percent. The first figure shows a shift by +10% for each color and the second figure -10%.

Similar to the brightness gradients but the following saturation gradients show a change of the Decimal color 15712173 by changing the saturation by 10% instead.

 15712173

 15712173

16777215

 13804690

 16775140

 11962745

 10121312

 8410952

 6701105

 4991516

 3478787

 2031616

 0

 15712173

 15712173

 15707797

 15716549

 15703165

 15721181

 15698789

 15725557

 15694157

 15728639

 15689782

 15685406

 15680774

 15679744

Harmonies

Analogous

The Analogous color harmony consists of three colors that are next to each other on the color wheel.



15973567



15712173



14796195

Triad

The Triadic color harmony groups three colors that are evenly spaced from another and form a triangle on the color wheel.



15712173



10605760



12699631

Complementary

The Complementary color scheme is a pair of colors which are on the opposite of each other on the color wheel.



15712173



11394543

Split Complementary

Split-complementary colors differ from the complementary color scheme. The scheme consists of three colors, the original color and two neighbors of the complement color.



11063024



15712173



9754068

Square

The Square scheme is like the rectangle color scheme, but the four colors are evenly spaced on the color wheel.



15712173



11981230



9884646



14402021

Rectangle

The Rectangle color scheme consists of four colors that form a rectangle on the color wheel.



15712173



13945250



9884646



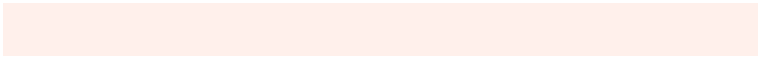
12176113

Sweetspot

The Sweet Spot groups the original color and five complimentary colors.



15712173



16773355



15707613



8418931



0



8421504

Same Dimension

The Same Dimension uses a secret algorithm to generate beautiful new colors.



15712173



16761515



15720621



7892844



12071424



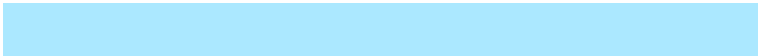
3673856

Inverse Universe

The Inverse Universe completely reimagines the original color for something new.



11394543



11266303



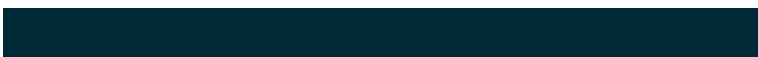
11386095



7107960



34488



10552

Previews

White Background



This preview shows how the Decimal color 15712173 looks on a white background.

Color Contrast Check

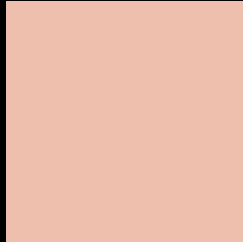
Large Text (above 18pt) WCAG AA × Fail

Any Text WCAG AA × Fail

Large Text (above 18pt) WCAG AAA × Fail

Any Text WCAG AAA × Fail

Black Background



This preview shows how the Decimal color 15712173 looks on a black background.

Color Contrast Check

Large Text (above 18pt) WCAG AA ✓ Pass

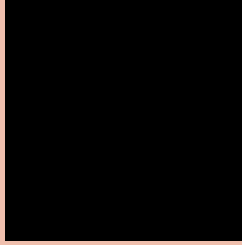
Any Text WCAG AA ✓ Pass

Large Text (above 18pt) WCAG AAA ✓ Pass

Any Text WCAG AAA ✓ Pass

If you want to check with other color combinations, try the [Color Contrast Checker](#).

Decimal 15712173 Background



This preview shows how black text looks on a background with the Decimal color 15712173.



This preview shows how white text looks on a background with the Decimal color 15712173.

Color Blindness Simulation

Color vision deficiency is a very complex topic, and I could not describe the different causes any better than Wikipedia does, so if you want to learn more, you should check out their [article about color blindness](#).

Dichromacy





Tritanopia
15907785

Trichromacy



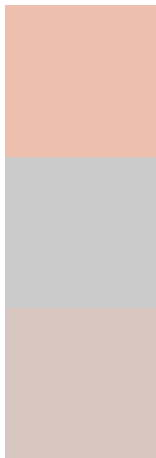
Original Color
15712173

Protanomaly
14534064

Deuteranomaly
15385004

Tritanomaly
15842495

Monochromacy



Original Color
15712173

Achromatopsia
13355979

Achromatomaly
14206912

CSS Examples

Text

The CSS property to change the color of the text to Decimal 15712173 is called "color". The color property can be set on classes, ids or directly on the HTML element.

This example shows how text in the color #EFBFAD looks like.

```
.text, #text, p{  
  color:#EFBFAD  
}
```

If you want to add a text shadow in that color use the text-shadow property, you can generate a text shadow directly with our [CSS Text Shadow Generator](#).

Here you see how black text with a 4 pixel #EFBFAD colored shadow looks like.

```
.shadow{ text-shadow: 4px 4px 2px #EFBFAD
}
```

Border

The CSS property to change the border of an element to Decimal 15712173 is called "border". The border property can be set on classes, ids or directly on the HTML element.

This example shows the color as border, it can be applied via the CSS property "border" or "border-color".

```
.border, #border, table{ border:4px solid
#EFBFAD }
```

If only the border color should be changed use the property `border-color`.

```
.border{ border-color:#EFBFAD }
```

If you want to add a box shadow in that color use:

Here you see how a box with a 4 pixel #EFBFAD colored shadow looks like.

```
.boxshadow{ -moz-box-shadow:4px 4px 4px  
4px #EFBFAD; -webkit-box-shadow:4px 4px  
4px 4px #EFBFAD; box-shadow:4px 4px 4px  
4px #EFBFAD }
```

Background

The CSS property to change the background color of an element to Decimal 15712173 is called "background". The background property can be set on classes, ids or directly on the HTML element.

```
.background, #background, body{  
background:#EFBFAD }
```

If only the background color should be changed can be used:

```
.background{ background-color:#EFBFAD }
```

This example shows the color as background, it is applied via the CSS property "background".

To optimize and compress your CSS code, you can use our [online CSS compressor and optimizer](#) based on csstidy. If you want to create a linear or radial gradient as background or border, check our [CSS Gradient Generator](#).

Hey! You found this booklet interesting? Support Converting Colors with the new Membership Option!

The pro membership hides all ads, plus gives you double the colors in the color bucket, and more awesome pro features!

[Learn more, Memberships starting at \\$2.50/m!](#)

**Follow me
on Twitter!**

@ConvertingColor