

Converting Colors

Decimal(15715508)

Have a look what the booklet for
Decimal(15715508) contains.

Decimal(15715508)	3
<i>Conversions</i>	4
<i>Details</i>	6
<i>Harmonies</i>	11
<i>Previews</i>	23
<i>Color Blindness Simulation</i>	26
<i>CSS Examples</i>	29

Color

Decimal(15715508)

Conversions

Conversions Part 1

Format	Color
Hex	EFCCB4
RGB	239, 204, 180
RGB Percent	94%, 80%, 71%
CMY	0.0627, 0.2000, 0.2941
CMYK	0.00, 0.15, 0.25, 0.06
HSL	24°, 65%, 82%
HSV	24°, 25%, 94%
XYZ	65.4277, 64.8317, 52.2454
YIQ	211.7290, 28.5640, -0.0440

Conversions

Conversions Part 2

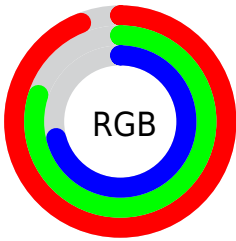
Format	Color
R_{YB}	239, 220, 180
Decimal	15715508
CIE _{Lab}	84.40, 8.73, 16.52
CIE _{LCh}	84, 18.689, 62.136
Yxy	64.8317, 0.3585, 0.3552
Android (android.graphics.Color)	4293905588 (0xFFEFCCB4)
YUV	211.7290, -15.6424, 23.9167
Hunter-Lab	80.5182, 4.1393, 17.8915

Details

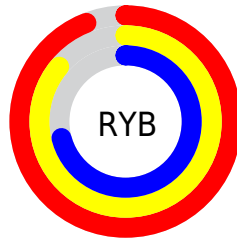
The Decimal color **15715508** is a light color, and the websafe version is hex **FFCCCC**. A complement of this color would be **11851759**, and the grayscale version is **13948116**.

A 20% lighter version of the original color is **16777196**, and **11966079** is the 20% darker color. If you saturate the color by 10%, you get **15711900**, and if you desaturate by 10%, it is **15719116**.

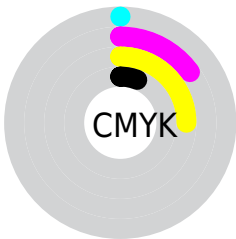
Distribution



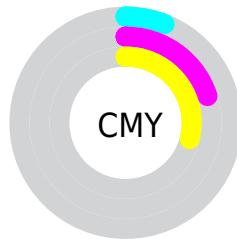
- Red (94%)
- Green (80%)
- Blue (71%)



- Red (94%)
- Yellow (86%)
- Blue (71%)



- Cyan (0%)
- Magenta (15%)
- Yellow (25%)
- Black (6%)



- Cyan (6%)
- Magenta (20%)
- Yellow (29%)

Brightness & Saturation Gradients

These gradients show how the Decimal color 15715508 changes by changing the brightness by 10 percent. The first figure shows a shift by +10% for each color and the second figure -10%.

Similar to the brightness gradients but the following saturation gradients show a change of the Decimal color 15715508 by changing the saturation by 10% instead.

 15715508

 15715508

16777215

 13808025

 16777196

 11966079

 10189926

 8414030

 6769463

 5125409

 3546892

 2099456

 0

 15715508

 15715508

 15711900

 15719116

 15708292

 15722724

 15704428

 15726588

 15700820

 15728639

 15697213

 15693605

 15689997

 15687936

Harmonies

Analogous

The Analogous color harmony consists of three colors that are next to each other on the color wheel.



16238785



15715508



14668464

Triad

The Triadic color harmony groups three colors that are evenly spaced from another and form a triangle on the color wheel.



15715508



11132371



14208752

Complementary

The Complementary color scheme is a pair of colors which are on the opposite of each other on the color wheel.



15715508



11851759

Split Complementary

Split-complementary colors differ from the complementary color scheme. The scheme consists of three colors, the original color and two neighbors of the complement color.



12702965



15715508



10804453

Square

The Square scheme is like the rectangle color scheme, but the four colors are evenly spaced on the color wheel.



15715508



12114882



11393521



15452643

Rectangle

The Rectangle color scheme consists of four colors that form a rectangle on the color wheel.



15715508



13817522



11393521



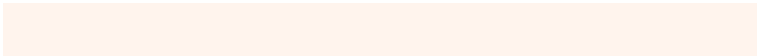
13684979

Sweetspot

The Sweet Spot groups the original color and five complimentary colors.



15715508



16774381



15709399



8419701



0



8421504

Same Dimension

The Same Dimension uses a secret algorithm to generate beautiful new colors.



15715508



16765619



15722932



7893356



12077824



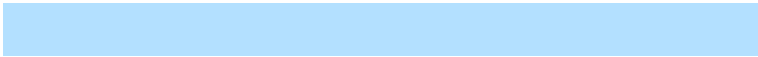
3675904

Inverse Universe

The Inverse Universe completely reimagines the original color for something new.



11851759



11788543



11844335



7107448



28088



8504

Previews

White Background



This preview shows how the Decimal color 15715508 looks on a white background.

Color Contrast Check

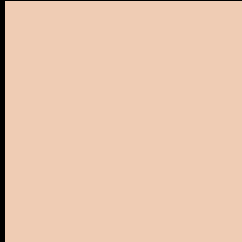
Large Text (above 18pt) WCAG AA × Fail

Any Text WCAG AA × Fail

Large Text (above 18pt) WCAG AAA × Fail

Any Text WCAG AAA × Fail

Black Background



This preview shows how the Decimal color 15715508 looks on a black background.

Color Contrast Check

Large Text (above 18pt) WCAG AA ✓ Pass

Any Text WCAG AA ✓ Pass

Large Text (above 18pt) WCAG AAA ✓ Pass

Any Text WCAG AAA ✓ Pass

If you want to check with other color combinations, try the [Color Contrast Checker](#).

Decimal 15715508 Background



This preview shows how black text looks on a background with the Decimal color 15715508.



This preview shows how white text looks on a background with the Decimal color 15715508.

Color Blindness Simulation

Color vision deficiency is a very complex topic, and I could not describe the different causes any better than Wikipedia does, so if you want to learn more, you should check out their [article about color blindness](#).

Dichromacy





Tritanopia
15976406

Trichromacy



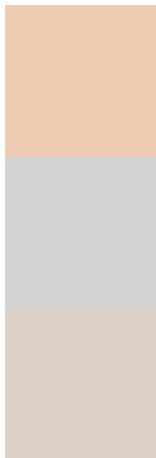
Original Color
15715508

Protanomaly
14995638

Deuteranomaly
15846324

Tritanomaly
15911370

Monochromacy



Original Color
15715508

Achromatopsia
13948116

Achromatomaly
14602696

CSS Examples

Text

The CSS property to change the color of the text to Decimal 15715508 is called "color". The color property can be set on classes, ids or directly on the HTML element.

This example shows how text in the color #EFCCB4 looks like.

```
.text, #text, p{  
    color:#EFCCB4  
}
```

If you want to add a text shadow in that color use the text-shadow property, you can generate a text shadow directly with our [CSS Text Shadow Generator](#).

Here you see how black text with a 4 pixel #EFCCB4 colored shadow looks like.

```
.shadow{ text-shadow: 4px 4px 2px #EFCCB4
}
```

Border

The CSS property to change the border of an element to Decimal 15715508 is called "border". The border property can be set on classes, ids or directly on the HTML element.

This example shows the color as border, it can be applied via the CSS property "border" or "border-color".

```
.border, #border, table{ border:4px solid
#EFCCB4 }
```

If only the border color should be changed use the property `border-color`.

```
.border{ border-color:#EFCCB4 }
```

If you want to add a box shadow in that color use:

Here you see how a box with a 4 pixel #EFCCB4 colored shadow looks like.

```
.boxshadow{ -moz-box-shadow:4px 4px 4px  
4px #EFCCB4; -webkit-box-shadow:4px 4px  
4px 4px #EFCCB4; box-shadow:4px 4px 4px  
4px #EFCCB4 }
```

Background

The CSS property to change the background color of an element to Decimal 15715508 is called "background". The background property can be set on classes, ids or directly on the HTML element.

```
.background, #background, body{  
background:#EFCCB4 }
```

If only the background color should be changed can be used:

```
.background{ background-color:#EFCCB4 }
```

This example shows the color as background, it is applied via the CSS property "background".

To optimize and compress your CSS code, you can use our [online CSS compressor and optimizer](#) based on csstidy. If you want to create a linear or radial gradient as background or border, check our [CSS Gradient Generator](#).

Hey! You found this booklet interesting? Support Converting Colors with the new Membership Option!

The pro membership hides all ads, plus gives you double the colors in the color bucket, and more awesome pro features!

[Learn more, Memberships starting at \\$2.50/m!](#)

**Follow me
on Twitter!**

@ConvertingColor