

Converting Colors

Decimal(15719650)

Have a look what the booklet for
Decimal(15719650) contains.

Decimal(15719650)	3
<i>Conversions</i>	4
<i>Details</i>	6
<i>Harmonies</i>	11
<i>Previews</i>	23
<i>Color Blindness Simulation</i>	26
<i>CSS Examples</i>	29

Color

Decimal(15719650)

Conversions

Conversions Part 1

Format	Color
Hex	EFDCE2
RGB	239, 220, 226
RGB Percent	94%, 86%, 89%
CMY	0.0627, 0.1373, 0.1137
CMYK	0.00, 0.08, 0.05, 0.06
HSL	341°, 37%, 90%
HSV	341°, 8%, 94%
XYZ	74.9173, 75.0281, 82.4848
YIQ	226.3650, 9.3980, 5.8940

Conversions

Conversions Part 2

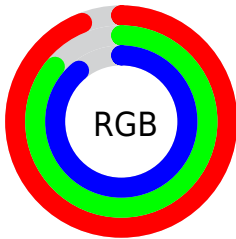
Format	Color
R _Y B	239, 220, 226
Decimal	15719650
CIE Lab	89.41, 7.53, -0.59
CIE LCh	89, 7.554, 355.555
Yxy	75.0281, 0.3223, 0.3228
Android (android.graphics.Color)	4293909730 (0xFFEFDCE2)
YUV	226.3650, -0.1799, 11.0809
Hunter-Lab	86.6188, 2.8032, 4.1728

Details

The Decimal color **15719650** is a light color, and the websafe version is hex **CCCCCC**. A complement of this color would be **14479337**, and the grayscale version is **14869218**.

A 20% lighter version of the original color is **16777215**, and **12035499** is the 20% darker color. If you saturate the color by 10%, you get **15713490**, and if you desaturate by 10%, it is **15725810**.

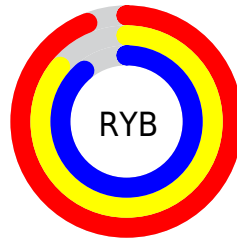
Distribution



Red (94%)

Green (86%)

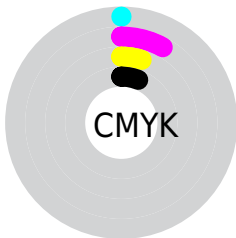
Blue (89%)



Red (94%)

Yellow (86%)

Blue (89%)

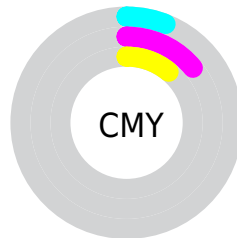


Cyan (0%)

Magenta (8%)

Yellow (5%)

Black (6%)



Cyan (6%)

Magenta (14%)

Yellow (11%)

Brightness & Saturation Gradients

These gradients show how the Decimal color 15719650 changes by changing the brightness by 10 percent. The first figure shows a shift by +10% for each color and the second figure -10%.

Similar to the brightness gradients but the following saturation gradients show a change of the Decimal color 15719650 by changing the saturation by 10% instead.

15719650

15719650

16777215

13877446

12035499

10259344

8548727

6904158

5325126

3746608

2365211

851968

 15719650

 15719650

 15713490

 15725810

 15707329

 15728639

 15701169

 15695009

 15689104

 15682944

 15676784

 15670623

 15664463

Harmonies

Analogous

The Analogous color harmony consists of three colors that are next to each other on the color wheel.



15326697



15719650



15850715

Triad

The Triadic color harmony groups three colors that are evenly spaced from another and form a triangle on the color wheel.



15719650



14738132



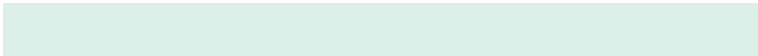
13821164

Complementary

The Complementary color scheme is a pair of colors which are on the opposite of each other on the color wheel.



15719650



14479337

Split Complementary

Split-complementary colors differ from the complementary color scheme. The scheme consists of three colors, the original color and two neighbors of the complement color.



13624807



15719650



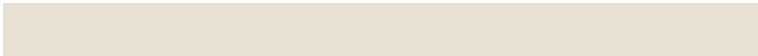
14214360

Square

The Square scheme is like the rectangle color scheme, but the four colors are evenly spaced on the color wheel.



15719650



15261906



13821407



14213871

Rectangle

The Rectangle color scheme consists of four colors that form a rectangle on the color wheel.



15719650



15719895



13821407



13690091

Sweetspot

The Sweet Spot groups the original color and five complimentary colors.



15719650



16775932



15326447



8420734



0



8421504

Same Dimension

The Same Dimension uses a secret algorithm to generate beautiful new colors.



15719650



16770798



15720412



7892080



12058682



3670034

Inverse Universe

The Inverse Universe completely reimagines the original color for something new.



15719650



16770798



14478575



7892080



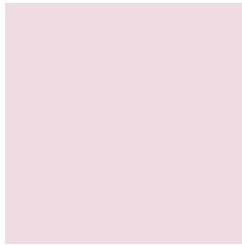
12058682



3670034

Previews

White Background



This preview shows how the Decimal color 15719650 looks on a white background.

Color Contrast Check

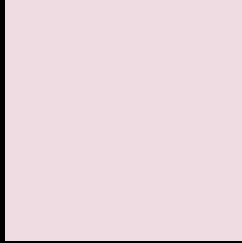
Large Text (above 18pt) WCAG AA × Fail

Any Text WCAG AA × Fail

Large Text (above 18pt) WCAG AAA × Fail

Any Text WCAG AAA × Fail

Black Background



This preview shows how the Decimal color 15719650 looks on a black background.

Color Contrast Check

Large Text (above 18pt) WCAG AA ✓ Pass

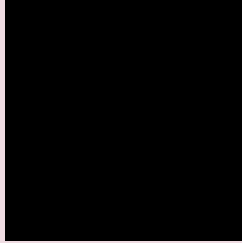
Any Text WCAG AA ✓ Pass

Large Text (above 18pt) WCAG AAA ✓ Pass

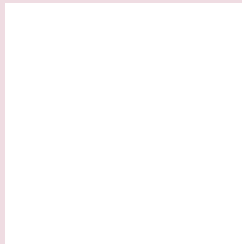
Any Text WCAG AAA ✓ Pass

If you want to check with other color combinations, try the [Color Contrast Checker](#).

Decimal 15719650 Background



This preview shows how black text looks on a background with the Decimal color 15719650.



This preview shows how white text looks on a background with the Decimal color 15719650.

Color Blindness Simulation

Color vision deficiency is a very complex topic, and I could not describe the different causes any better than Wikipedia does, so if you want to learn more, you should check out their [article about color blindness](#).

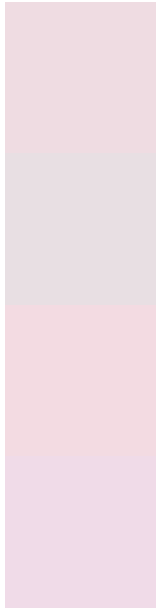
Dichromacy





Tritanopia
15784684

Trichromacy



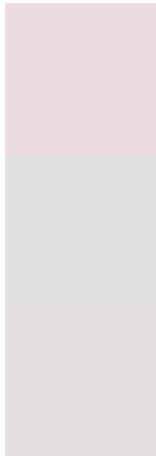
Original Color
15719650

Protanomaly
15261667

Deuteranomaly
15981538

Tritanomaly
15784936

Monochromacy



Original Color
15719650

Achromatopsia
14869218

Achromatomaly
15196386

CSS Examples

Text

The CSS property to change the color of the text to Decimal 15719650 is called "color". The color property can be set on classes, ids or directly on the HTML element.

This example shows how text in the color #EFDCE2 looks like.

```
.text, #text, p{  
  color:#EFDCE2  
}
```

If you want to add a text shadow in that color use the text-shadow property, you can generate a text shadow directly with our [CSS Text Shadow Generator](#).

Here you see how black text with a 4 pixel #EFDCE2 colored shadow looks like.

```
.shadow{ text-shadow: 4px 4px 2px #EFDCE2
}
```

Border

The CSS property to change the border of an element to Decimal 15719650 is called "border". The border property can be set on classes, ids or directly on the HTML element.

This example shows the color as border, it can be applied via the CSS property "border" or "border-color".

```
.border, #border, table{ border:4px solid
#EFDCE2 }
```

If only the border color should be changed use the property `border-color`.

```
.border{ border-color:#EFDCE2 }
```

If you want to add a box shadow in that color use:

Here you see how a box with a 4 pixel #EFDCE2 colored shadow looks like.

```
.boxshadow{ -moz-box-shadow:4px 4px 4px  
4px #EFDCE2; -webkit-box-shadow:4px 4px  
4px 4px #EFDCE2; box-shadow:4px 4px 4px  
4px #EFDCE2 }
```

Background

The CSS property to change the background color of an element to Decimal 15719650 is called "background". The background property can be set on classes, ids or directly on the HTML element.

```
.background, #background, body{  
background:#EFDCE2 }
```

If only the background color should be changed can be used:

```
.background{ background-color:#EFDCE2 }
```

This example shows the color as background, it is applied via the CSS property "background".

To optimize and compress your CSS code, you can use our [online CSS compressor and optimizer](#) based on csstidy. If you want to create a linear or radial gradient as background or border, check our [CSS Gradient Generator](#).

Hey! You found this booklet interesting? Support Converting Colors with the new Membership Option!

The pro membership hides all ads, plus gives you double the colors in the color bucket, and more awesome pro features!

[Learn more, Memberships starting at \\$2.50/m!](#)

**Follow me
on Twitter!**

@ConvertingColor