

Converting Colors

Decimal(15743859)

Have a look what the booklet for
Decimal(15743859) contains.

| | |
|--|----|
| Decimal(15743859) | 3 |
| <i>Conversions</i> | 4 |
| <i>Details</i> | 6 |
| <i>Harmonies</i> | 11 |
| <i>Previews</i> | 23 |
| <i>Color Blindness Simulation</i> | 26 |
| <i>CSS Examples</i> | 29 |

Color

Decimal(15743859)

Conversions

Conversions Part 1

| Format | Color |
|---------------|----------------------------|
| Hex | F03B73 |
| RGB | 240, 59, 115 |
| RGB Percent | 94%, 23%, 45% |
| CMY | 0.0588, 0.7686, 0.5490 |
| CMYK | 0.00, 0.75, 0.52, 0.06 |
| HSL | 341°, 86%, 59% |
| HSV | 341°, 75%, 94% |
| XYZ | 40.5937, 22.8910, 18.4985 |
| YIQ | 119.5030, 89.9000, 55.7880 |

Conversions

Conversions Part 2

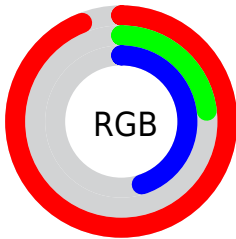
| Format | Color |
|-------------------------------------|--------------------------------|
| R_{YB} | 240, 59, 115 |
| Decimal | 15743859 |
| CIE _{Lab} | 54.96, 70.68, 11.57 |
| CIE _{LCh} | 55, 71.619, 9.301 |
| Yxy | 22.8910, 0.4951, 0.2792 |
| Android (android.graphics.Color) | 4293933939 (0xFFFF03B73) |
| YUV | 119.5030, -2.2200, 105.6759 |
| Hunter-Lab | 47.8445, 67.7202, 10.5674 |

Details

The Decimal color **15743859** is a dark color, and the websafe version is hex **FF3366**. The color can be described as middle washed rose. A complement of this color would be **3928248**, and the grayscale version is **7829367**.

A 20% lighter version of the original color is **16742823**, and **11665475** is the 20% darker color. If you saturate the color by 10%, you get **15737698**, and if you desaturate by 10%, it is **15750020**.

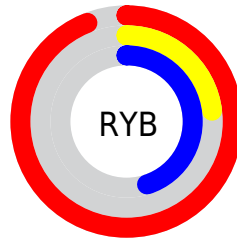
Distribution



Red (94%)

Green (23%)

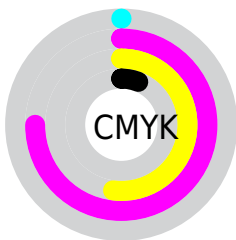
Blue (45%)



Red (94%)

Yellow (23%)

Blue (45%)

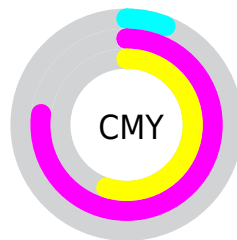


Cyan (0%)

Magenta (75%)

Yellow (52%)

Black (6%)



Cyan (6%)

Magenta (77%)

Yellow (55%)

Brightness & Saturation Gradients

These gradients show how the Decimal color 15743859 changes by changing the brightness by 10 percent. The first figure shows a shift by +10% for each color and the second figure -10%.

Similar to the brightness gradients but the following saturation gradients show a change of the Decimal color 15743859 by changing the saturation by 10% instead.

 15743859

 15743859

16777215

 13700187

 16742823

 11665475

 16750530

 9633838

 16757982

 7602202

 16765690

 5701634

 16773119

 3735554

 983040

 0

 15743859

 15743859

 15737698

 15750020

 15731538

 15756180

 15728714

 15762341

 15768501

 15774662

 15780822

 15786983

 15793144

 15794175

Harmonies

Analogous

The Analogous color harmony consists of three colors that are next to each other on the color wheel.



14370993



15743859



14963256

Triad

The Triadic color harmony groups three colors that are evenly spaced from another and form a triangle on the color wheel.



15743859



4691213



38648

Complementary

The Complementary color scheme is a pair of colors which are on the opposite of each other on the color wheel.



15743859



3928248

Split Complementary

Split-complementary colors differ from the complementary color scheme. The scheme consists of three colors, the original color and two neighbors of the complement color.



40657



15743859



40021

Square

The Square scheme is like the rectangle color scheme, but the four colors are evenly spaced on the color wheel.



15743859



9275136



40854



34303

Rectangle

The Rectangle color scheme consists of four colors that form a rectangle on the color wheel.



15743859



13592329



40854



39406

Sweetspot

The Sweet Spot groups the original color and five complimentary colors.



15743859



16762070



12008432



8412263



0



8421504

Same Dimension

The Same Dimension uses a secret algorithm to generate beautiful new colors.



15743859



16717663



15752251



7892080



12058681



3670033

Inverse Universe

The Inverse Universe completely reimagines the original color for something new.



15743859



16717663



3919856



7892080



12058681



3670033

Previews

White Background



This preview shows how the Decimal color 15743859 looks on a white background.

Color Contrast Check

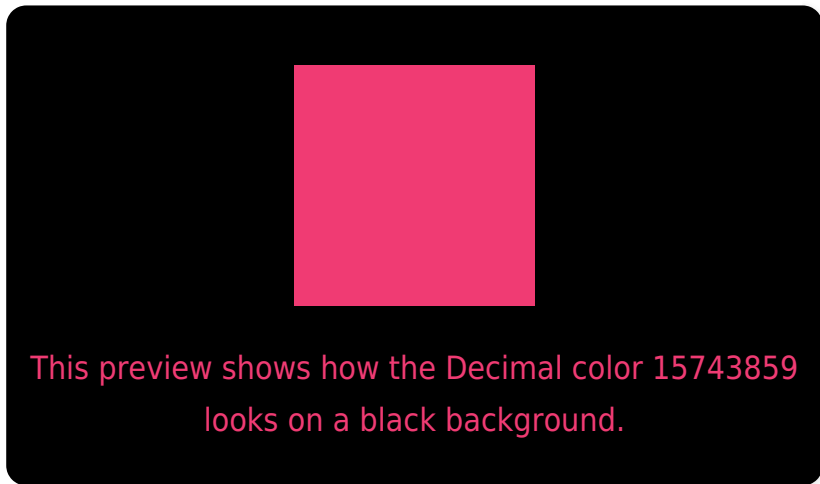
Large Text (above 18pt) WCAG AA ✓ Pass

Any Text WCAG AA × Fail

Large Text (above 18pt) WCAG AAA × Fail

Any Text WCAG AAA × Fail

Black Background



Color Contrast Check

Large Text (above 18pt) WCAG AA ✓ Pass

Any Text WCAG AA ✓ Pass

Large Text (above 18pt) WCAG AAA ✓ Pass

Any Text WCAG AAA × Fail

If you want to check with other color combinations, try the [Color Contrast Checker](#).

Decimal 15743859 Background



This preview shows how black text looks on a background with the Decimal color 15743859.

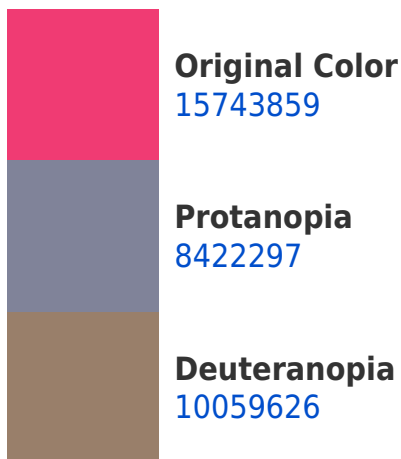



This preview shows how white text looks on a background with the Decimal color 15743859.

Color Blindness Simulation

Color vision deficiency is a very complex topic, and I could not describe the different causes any better than Wikipedia does, so if you want to learn more, you should check out their [article about color blindness](#).

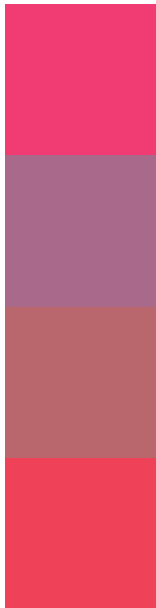
Dichromacy





Tritanopia
15615304

Trichromacy



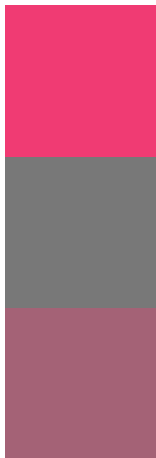
Original Color
15743859

Protanomaly
11102603

Deuteranomaly
12150381

Tritanomaly
15679832

Monochromacy



Original Color
15743859

Achromatopsia
7895160

Achromatomaly
10773110

CSS Examples

Text

The CSS property to change the color of the text to Decimal 15743859 is called "color". The color property can be set on classes, ids or directly on the HTML element.

This example shows how text in the color #F03B73 looks like.

```
.text, #text, p{  
  color:#F03B73  
}
```

If you want to add a text shadow in that color use the text-shadow property, you can generate a text shadow directly with our [CSS Text Shadow Generator](#).

Here you see how black text with a 4 pixel #F03B73 colored shadow looks like.

```
.shadow{ text-shadow: 4px 4px 2px #F03B73
}
```

Border

The CSS property to change the border of an element to Decimal 15743859 is called "border". The border property can be set on classes, ids or directly on the HTML element.

This example shows the color as border, it can be applied via the CSS property "border" or "border-color".

```
.border, #border, table{ border:4px solid
#F03B73 }
```

If only the border color should be changed use the property `border-color`.

```
.border{ border-color:#F03B73 }
```

If you want to add a box shadow in that color use:

Here you see how a box with a 4 pixel #F03B73 colored shadow looks like.

```
.boxshadow{ -moz-box-shadow:4px 4px 4px  
4px #F03B73; -webkit-box-shadow:4px 4px  
4px 4px #F03B73; box-shadow:4px 4px 4px  
4px #F03B73 }
```

Background

The CSS property to change the background color of an element to Decimal 15743859 is called "background". The background property can be set on classes, ids or directly on the HTML element.

```
.background, #background, body{  
background:#F03B73 }
```

If only the background color should be changed can be used:

```
.background{ background-color:#F03B73 }
```

This example shows the color as background, it is applied via the CSS property "background".

To optimize and compress your CSS code, you can use our [online CSS compressor and optimizer](#) based on csstidy. If you want to create a linear or radial gradient as background or border, check our [CSS Gradient Generator](#).

Hey! You found this booklet interesting? Support Converting Colors with the new Membership Option!

The pro membership hides all ads, plus gives you double the colors in the color bucket, and more awesome pro features!

[Learn more, Memberships starting at \\$2.50/m!](#)

**Follow me
on Twitter!**

@ConvertingColor