

Converting Colors

Decimal(15744643)

Have a look what the booklet for
Decimal(15744643) contains.

Decimal(15744643)	3
<i>Conversions</i>	4
<i>Details</i>	6
<i>Harmonies</i>	11
<i>Previews</i>	23
<i>Color Blindness Simulation</i>	26
<i>CSS Examples</i>	29

Color

Decimal(15744643)

Conversions

Conversions Part 1

Format	Color
Hex	F03E83
RGB	240, 62, 131
RGB Percent	94%, 24%, 51%
CMY	0.0588, 0.7569, 0.4863
CMYK	0.00, 0.74, 0.45, 0.06
HSL	337°, 86%, 59%
HSV	337°, 74%, 94%
XYZ	41.7545, 23.6092, 23.8291
YIQ	123.0880, 83.9390, 59.1950

Conversions

Conversions Part 2

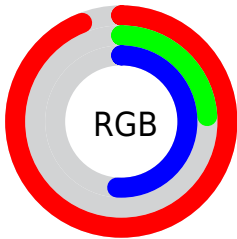
Format	Color
R_{YB}	240, 62, 131
Decimal	15744643
CIE _{Lab}	55.69, 71.07, 3.09
CIE _{LCh}	56, 71.134, 2.486
Yxy	23.6092, 0.4681, 0.2647
Android (android.graphics.Color)	4293934723 (0xFFFF03E83)
YUV	123.0880, 3.9006, 102.5318
Hunter-Lab	48.5893, 68.3602, 4.9357

Details

The Decimal color **15744643** is a dark color, and the websafe version is hex **CC0066**. The color can be described as middle washed rose. A complement of this color would be **4124843**, and the grayscale version is **8092539**.

A 20% lighter version of the original color is **16743608**, and **11665490** is the 20% darker color. If you saturate the color by 10%, you get **15738484**, and if you desaturate by 10%, it is **15750802**.

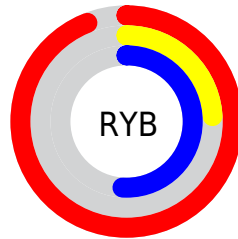
Distribution



Red (94%)

Green (24%)

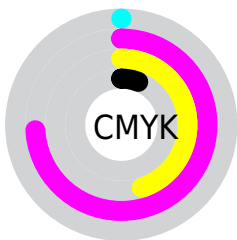
Blue (51%)



Red (94%)

Yellow (24%)

Blue (51%)

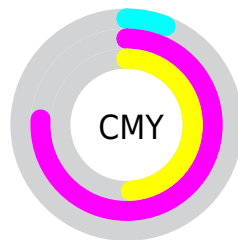


Cyan (0%)

Magenta (74%)

Yellow (45%)

Black (6%)



Cyan (6%)

Magenta (76%)

Yellow (49%)

Brightness & Saturation Gradients

These gradients show how the Decimal color 15744643 changes by changing the brightness by 10 percent. The first figure shows a shift by +10% for each color and the second figure -10%.

Similar to the brightness gradients but the following saturation gradients show a change of the Decimal color 15744643 by changing the saturation by 10% instead.

 15744643

 15744643

16777215

 13701994

 16743608

 11665490

 16751059

 9699387

 16758512

 7733286

 16766207

 5767185

 16773887

 3866627

 1376256

 0

 15744643

 15744643

■ 15738484

■ 15750802

■ 15732326

■ 15756960

■ 15728733

■ 15763119

■ 15769278

■ 15775436

■ 15781595

■ 15787754

■ 15793913

■ 15794175

Harmonies

Analogous

The Analogous color harmony consists of three colors that are next to each other on the color wheel.



13783744



15744643



15420999

Triad

The Triadic color harmony groups three colors that are evenly spaced from another and form a triangle on the color wheel.



15744643



6132736



39667

Complementary

The Complementary color scheme is a pair of colors which are on the opposite of each other on the color wheel.



15744643



4124843

Split Complementary

Split-complementary colors differ from the complementary color scheme. The scheme consists of three colors, the original color and two neighbors of the complement color.



41159



15744643



40264

Square

The Square scheme is like the rectangle color scheme, but the four colors are evenly spaced on the color wheel.



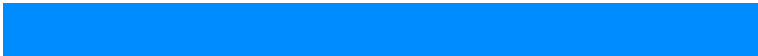
15744643



10257664



41353



36095

Rectangle

The Rectangle color scheme consists of four colors that form a rectangle on the color wheel.



15744643



14246431



41353



40423

Sweetspot

The Sweet Spot groups the original color and five complimentary colors.



15744643



16762845



11091696



8412779



0



8421504

Same Dimension

The Same Dimension uses a secret algorithm to generate beautiful new colors.



15744643



16718964



15749182



7892081



12058695



3670038

Inverse Universe

The Inverse Universe completely reimagines the original color for something new.



15744643



16718964



4120304



7892081



12058695



3670038

Previews

White Background



This preview shows how the Decimal color 15744643 looks on a white background.

Color Contrast Check

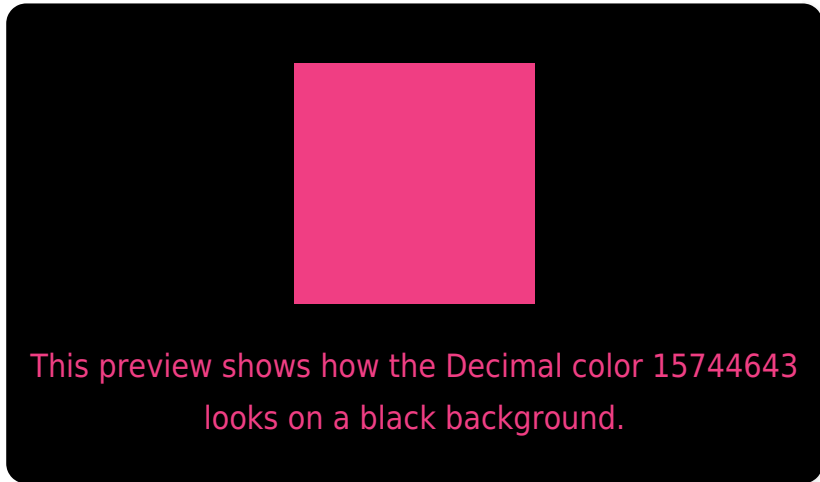
Large Text (above 18pt) WCAG AA ✓ Pass

Any Text WCAG AA × Fail

Large Text (above 18pt) WCAG AAA × Fail

Any Text WCAG AAA × Fail

Black Background



Color Contrast Check

Large Text (above 18pt) WCAG AA ✓ Pass

Any Text WCAG AA ✓ Pass

Large Text (above 18pt) WCAG AAA ✓ Pass

Any Text WCAG AAA × Fail

If you want to check with other color combinations, try the [Color Contrast Checker](#).

Decimal 15744643 Background



This preview shows how black text looks on a background with the Decimal color 15744643.

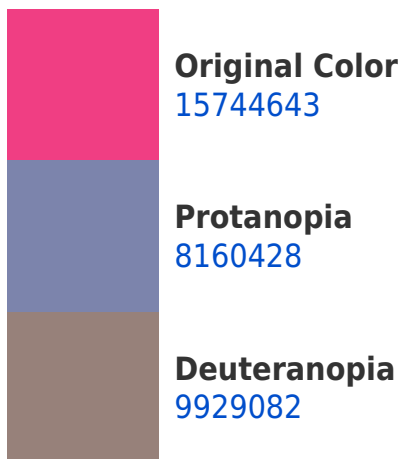


This preview shows how white text looks on a background with the Decimal color 15744643.

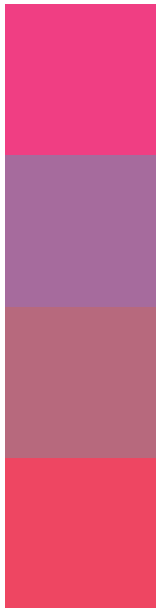
Color Blindness Simulation

Color vision deficiency is a very complex topic, and I could not describe the different causes any better than Wikipedia does, so if you want to learn more, you should check out their [article about color blindness](#).

Dichromacy



Trichromacy



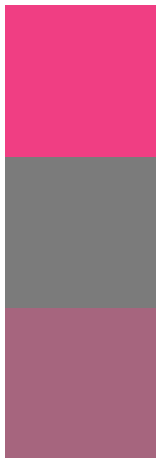
Original Color
15744643

Protanomaly
10906525

Deuteranomaly
12020093

Tritanomaly
15615586

Monochromacy



Original Color
15744643

Achromatopsia
8092539

Achromatomaly
10904958

CSS Examples

Text

The CSS property to change the color of the text to Decimal 15744643 is called "color". The color property can be set on classes, ids or directly on the HTML element.

This example shows how text in the color #F03E83 looks like.

```
.text, #text, p{  
    color:#F03E83  
}
```

If you want to add a text shadow in that color use the text-shadow property, you can generate a text shadow directly with our [CSS Text Shadow Generator](#).

Here you see how black text with a 4 pixel #F03E83 colored shadow looks like.

```
.shadow{ text-shadow: 4px 4px 2px #F03E83
}
```

Border

The CSS property to change the border of an element to Decimal 15744643 is called "border". The border property can be set on classes, ids or directly on the HTML element.

This example shows the color as border, it can be applied via the CSS property "border" or "border-color".

```
.border, #border, table{ border:4px solid
#F03E83 }
```

If only the border color should be changed use the property `border-color`.

```
.border{ border-color:#F03E83 }
```

If you want to add a box shadow in that color use:

Here you see how a box with a 4 pixel #F03E83 colored shadow looks like.

```
.boxshadow{ -moz-box-shadow:4px 4px 4px  
4px #F03E83; -webkit-box-shadow:4px 4px  
4px 4px #F03E83; box-shadow:4px 4px 4px  
4px #F03E83 }
```

Background

The CSS property to change the background color of an element to Decimal 15744643 is called "background". The background property can be set on classes, ids or directly on the HTML element.

```
.background, #background, body{  
background:#F03E83 }
```

If only the background color should be changed can be used:

```
.background{ background-color:#F03E83 }
```

This example shows the color as background, it is applied via the CSS property "background".

To optimize and compress your CSS code, you can use our [online CSS compressor and optimizer](#) based on csstidy. If you want to create a linear or radial gradient as background or border, check our [CSS Gradient Generator](#).

Hey! You found this booklet interesting? Support Converting Colors with the new Membership Option!

The pro membership hides all ads, plus gives you double the colors in the color bucket, and more awesome pro features!

[Learn more, Memberships starting at \\$2.50/m!](#)

**Follow me
on Twitter!**

@ConvertingColor