

Converting Colors

Decimal(15745652)

Have a look what the booklet for
Decimal(15745652) contains.

Decimal(15745652)	3
<i>Conversions</i>	4
<i>Details</i>	6
<i>Harmonies</i>	11
<i>Previews</i>	23
<i>Color Blindness Simulation</i>	26
<i>CSS Examples</i>	29

Color

Decimal(15745652)

Conversions

Conversions Part 1

Format	Color
Hex	F04274
RGB	240, 66, 116
RGB Percent	94%, 26%, 45%
CMY	0.0588, 0.7412, 0.5451
CMYK	0.00, 0.72, 0.52, 0.06
HSL	343°, 85%, 60%
HSV	343°, 72%, 94%
XYZ	41.0358, 23.6826, 18.9314
YIQ	123.7260, 87.6540, 52.4380

Conversions

Conversions Part 2

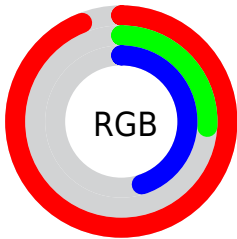
Format	Color
R_{YB}	240, 66, 116
Decimal	15745652
CIE _{Lab}	55.77, 68.55, 12.11
CIE _{LCh}	56, 69.615, 10.019
Yxy	23.6826, 0.4906, 0.2831
Android (android.graphics.Color)	4293935732 (0xFFFF04274)
YUV	123.7260, -3.8089, 101.9723
Hunter-Lab	48.6648, 65.3536, 11.0006

Details

The Decimal color **15745652** is a dark color, and the websafe version is hex **CC3366**. The color can be described as middle washed rose. A complement of this color would be **4387006**, and the grayscale version is **8158332**.

A 20% lighter version of the original color is **16744104**, and **11665476** is the 20% darker color. If you saturate the color by 10%, you get **15739491**, and if you desaturate by 10%, it is **15751813**.

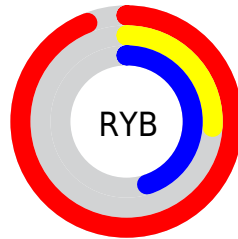
Distribution



Red (94%)

Green (26%)

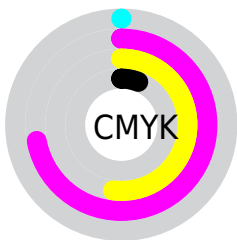
Blue (45%)



Red (94%)

Yellow (26%)

Blue (45%)

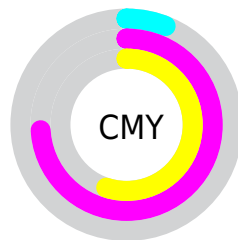


Cyan (0%)

Magenta (72%)

Yellow (52%)

Black (6%)



Cyan (6%)

Magenta (74%)

Yellow (55%)

Brightness & Saturation Gradients

These gradients show how the Decimal color 15745652 changes by changing the brightness by 10 percent. The first figure shows a shift by +10% for each color and the second figure -10%.

Similar to the brightness gradients but the following saturation gradients show a change of the Decimal color 15745652 by changing the saturation by 10% instead.

 15745652

 15745652

16777215

 13704284

 16744104

 11665476

 16751555

 9633839

 16759263


 7667739

 16766715

 5701634

 16774399

 3801090

 1114112

 0

 15745652

 15745652

 15739491

 15751813

 15733330

 15757974

 15728709

 15764135

 15770296

 15776458

 15782619

 15788780

 15794173

 15794175

Harmonies

Analogous

The Analogous color harmony consists of three colors that are next to each other on the color wheel.



14437808



15745652



14964538

Triad

The Triadic color harmony groups three colors that are evenly spaced from another and form a triangle on the color wheel.



15745652



4888345



38904

Complementary

The Complementary color scheme is a pair of colors which are on the opposite of each other on the color wheel.



15745652



4387006

Split Complementary

Split-complementary colors differ from the complementary color scheme. The scheme consists of three colors, the original color and two neighbors of the complement color.



40914



15745652



40538

Square

The Square scheme is like the rectangle color scheme, but the four colors are evenly spaced on the color wheel.



15745652



9341184



41369



34558

Rectangle

The Rectangle color scheme consists of four colors that form a rectangle on the color wheel.



15745652



13593105



41369



39918

Sweetspot

The Sweet Spot groups the original color and five complimentary colors.



15745652



16762839



12337904



8412776



0



8421504

Same Dimension

The Same Dimension uses a secret algorithm to generate beautiful new colors.



15745652



16720225



15754562



7892079



12058677



3670032

Inverse Universe

The Inverse Universe completely reimagines the original color for something new.



15745652



16720225



4378096



7892079



12058677



3670032

Previews

White Background



This preview shows how the Decimal color 15745652 looks on a white background.

Color Contrast Check

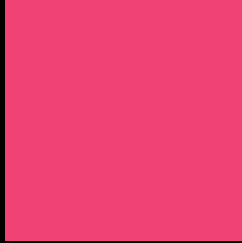
Large Text (above 18pt) WCAG AA ✓ Pass

Any Text WCAG AA × Fail

Large Text (above 18pt) WCAG AAA × Fail

Any Text WCAG AAA × Fail

Black Background



This preview shows how the Decimal color 15745652 looks on a black background.

Color Contrast Check

Large Text (above 18pt) WCAG AA ✓ Pass

Any Text WCAG AA ✓ Pass

Large Text (above 18pt) WCAG AAA ✓ Pass

Any Text WCAG AAA × Fail

If you want to check with other color combinations, try the [Color Contrast Checker](#).

Decimal 15745652 Background



This preview shows how black text looks on a background with the Decimal color 15745652.

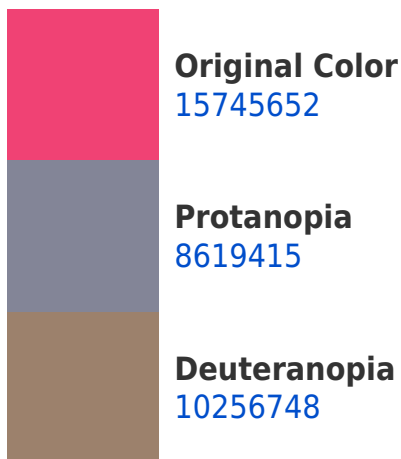


This preview shows how white text looks on a background with the Decimal color 15745652.

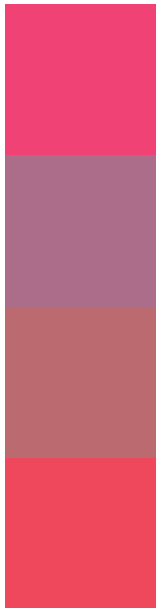
Color Blindness Simulation

Color vision deficiency is a very complex topic, and I could not describe the different causes any better than Wikipedia does, so if you want to learn more, you should check out their [article about color blindness](#).

Dichromacy



Trichromacy



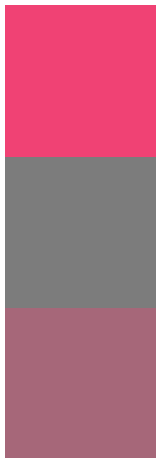
Original Color
15745652

Protanomaly
11234698

Deuteranomaly
12282479

Tritanomaly
15681372

Monochromacy



Original Color
15745652

Achromatopsia
8158332

Achromatomaly
10905465

CSS Examples

Text

The CSS property to change the color of the text to Decimal 15745652 is called "color". The color property can be set on classes, ids or directly on the HTML element.

This example shows how text in the color #F04274 looks like.

```
.text, #text, p{  
  color:#F04274  
}
```

If you want to add a text shadow in that color use the text-shadow property, you can generate a text shadow directly with our [CSS Text Shadow Generator](#).

Here you see how black text with a 4 pixel #F04274 colored shadow looks like.

```
.shadow{ text-shadow: 4px 4px 2px #F04274
}
```

Border

The CSS property to change the border of an element to Decimal 15745652 is called "border". The border property can be set on classes, ids or directly on the HTML element.

This example shows the color as border, it can be applied via the CSS property "border" or "border-color".

```
.border, #border, table{ border:4px solid
#F04274 }
```

If only the border color should be changed use the property `border-color`.

```
.border{ border-color:#F04274 }
```

If you want to add a box shadow in that color use:

Here you see how a box with a 4 pixel #F04274 colored shadow looks like.

```
.boxshadow{ -moz-box-shadow:4px 4px 4px  
4px #F04274; -webkit-box-shadow:4px 4px  
4px 4px #F04274; box-shadow:4px 4px 4px  
4px #F04274 }
```

Background

The CSS property to change the background color of an element to Decimal 15745652 is called "background". The background property can be set on classes, ids or directly on the HTML element.

```
.background, #background, body{  
background:#F04274 }
```

If only the background color should be changed can be used:

```
.background{ background-color:#F04274 }
```

This example shows the color as background, it is applied via the CSS property "background".

To optimize and compress your CSS code, you can use our [online CSS compressor and optimizer](#) based on csstidy. If you want to create a linear or radial gradient as background or border, check our [CSS Gradient Generator](#).

Hey! You found this booklet interesting? Support Converting Colors with the new Membership Option!

The pro membership hides all ads, plus gives you double the colors in the color bucket, and more awesome pro features!

[Learn more, Memberships starting at \\$2.50/m!](#)

**Follow me
on Twitter!**

@ConvertingColor