

Converting Colors

Decimal(15745665)

Have a look what the booklet for
Decimal(15745665) contains.

Decimal(15745665)	3
<i>Conversions</i>	4
<i>Details</i>	6
<i>Harmonies</i>	11
<i>Previews</i>	23
<i>Color Blindness Simulation</i>	26
<i>CSS Examples</i>	29

Color

Decimal(15745665)

Conversions

Conversions Part 1

Format	Color
Hex	F04281
RGB	240, 66, 129
RGB Percent	94%, 26%, 51%
CMY	0.0588, 0.7412, 0.4941
CMYK	0.00, 0.72, 0.46, 0.06
HSL	338°, 85%, 60%
HSV	338°, 72%, 94%
XYZ	41.8458, 24.0067, 23.1971
YIQ	125.2080, 83.4810, 56.4810

Conversions

Conversions Part 2

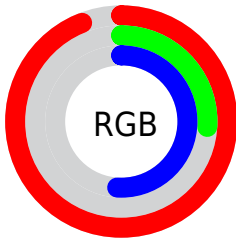
Format	Color
R _Y B	240, 66, 129
Decimal	15745665
CIE Lab	56.09, 69.62, 4.85
CIE LCh	56, 69.788, 3.985
Yxy	24.0067, 0.4699, 0.2696
Android (android.graphics.Color)	4293935745 (0xFFFF04281)
YUV	125.2080, 1.8695, 100.6726
Hunter-Lab	48.9966, 66.7049, 6.2272

Details

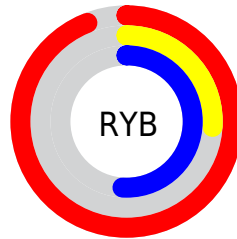
The Decimal color **15745665** is a light color, and the websafe version is hex **FF6699**. The color can be described as light washed rose. A complement of this color would be **4386993**, and the grayscale version is **8224125**.

A 20% lighter version of the original color is **16744374**, and **11665488** is the 20% darker color. If you saturate the color by 10%, you get **15739506**, and if you desaturate by 10%, it is **15751824**.

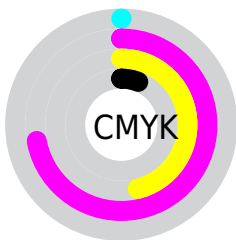
Distribution



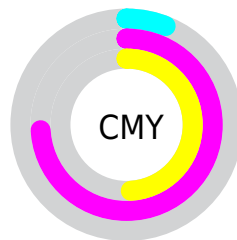
- Red (94%)
- Green (26%)
- Blue (51%)



- Red (94%)
- Yellow (26%)
- Blue (51%)



- Cyan (0%)
- Magenta (72%)
- Yellow (46%)
- Black (6%)



- Cyan (6%)
- Magenta (74%)
- Yellow (49%)

Brightness & Saturation Gradients

These gradients show how the Decimal color 15745665 changes by changing the brightness by 10 percent. The first figure shows a shift by +10% for each color and the second figure -10%.

Similar to the brightness gradients but the following saturation gradients show a change of the Decimal color 15745665 by changing the saturation by 10% instead.

 15745665

 15745665

16777215

 13704040

 16744374

 11665488

 16751825

 9699386

 16759277

 7733284

 16766975

 5767183

 16774655

 3932163

 1376256

 0

 15745665

 15745665

 15739506

 15751824

 15733346

 15757984

 15728727

 15764143

 15770302

 15776462

 15782621

 15788780

 15794171

 15794175

Harmonies

Analogous

The Analogous color harmony consists of three colors that are next to each other on the color wheel.



13980605



15745665



15356486

Triad

The Triadic color harmony groups three colors that are evenly spaced from another and form a triangle on the color wheel.



15745665



6002182



39668

Complementary

The Complementary color scheme is a pair of colors which are on the opposite of each other on the color wheel.



15745665



4386993

Split Complementary

Split-complementary colors differ from the complementary color scheme. The scheme consists of three colors, the original color and two neighbors of the complement color.



41417



15745665



40526

Square

The Square scheme is like the rectangle color scheme, but the four colors are evenly spaced on the color wheel.



15745665



10127104



41613



35839

Rectangle

The Rectangle color scheme consists of four colors that form a rectangle on the color wheel.



15745665



14116128



41613



40424

Sweetspot

The Sweet Spot groups the original color and five complimentary colors.



15745665



16762843



11551472



8412778



0



8421504

Same Dimension

The Same Dimension uses a secret algorithm to generate beautiful new colors.



15745665



16720241



15751490



7892080



12058690



3670036

Inverse Universe

The Inverse Universe completely reimagines the original color for something new.



15745665



16720241



4381168



7892080



12058690



3670036

Previews

White Background



This preview shows how the Decimal color 15745665 looks on a white background.

Color Contrast Check

Large Text (above 18pt) WCAG AA ✓ Pass

Any Text WCAG AA × Fail

Large Text (above 18pt) WCAG AAA × Fail

Any Text WCAG AAA × Fail

Black Background



This preview shows how the Decimal color 15745665 looks on a black background.

Color Contrast Check

Large Text (above 18pt) WCAG AA ✓ Pass

Any Text WCAG AA ✓ Pass

Large Text (above 18pt) WCAG AAA ✓ Pass

Any Text WCAG AAA × Fail

If you want to check with other color combinations, try the [Color Contrast Checker](#).

Decimal 15745665 Background



This preview shows how black text looks on a background with the Decimal color 15745665.



This preview shows how white text looks on a background with the Decimal color 15745665.

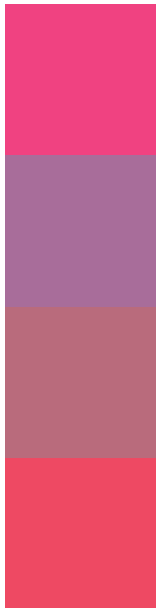
Color Blindness Simulation

Color vision deficiency is a very complex topic, and I could not describe the different causes any better than Wikipedia does, so if you want to learn more, you should check out their [article about color blindness](#).

Dichromacy



Trichromacy



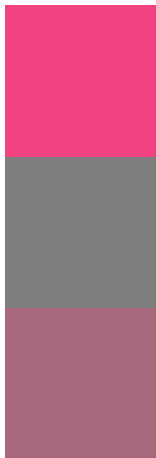
Original Color
15745665

Protanomaly
11038106

Deuteranomaly
12151676

Tritanomaly
15616355

Monochromacy



Original Color
15745665

Achromatopsia
8224125

Achromatomaly
10971262

CSS Examples

Text

The CSS property to change the color of the text to Decimal 15745665 is called "color". The color property can be set on classes, ids or directly on the HTML element.

This example shows how text in the color #F04281 looks like.

```
.text, #text, p{  
  color:#F04281  
}
```

If you want to add a text shadow in that color use the text-shadow property, you can generate a text shadow directly with our [CSS Text Shadow Generator](#).

Here you see how black text with a 4 pixel #F04281 colored shadow looks like.

```
.shadow{ text-shadow: 4px 4px 2px #F04281
}
```

Border

The CSS property to change the border of an element to Decimal 15745665 is called "border". The border property can be set on classes, ids or directly on the HTML element.

This example shows the color as border, it can be applied via the CSS property "border" or "border-color".

```
.border, #border, table{ border:4px solid
#F04281 }
```

If only the border color should be changed use the property `border-color`.

```
.border{ border-color:#F04281 }
```

If you want to add a box shadow in that color use:

Here you see how a box with a 4 pixel #F04281 colored shadow looks like.

```
.boxshadow{ -moz-box-shadow:4px 4px 4px  
4px #F04281; -webkit-box-shadow:4px 4px  
4px 4px #F04281; box-shadow:4px 4px 4px  
4px #F04281 }
```

Background

The CSS property to change the background color of an element to Decimal 15745665 is called "background". The background property can be set on classes, ids or directly on the HTML element.

```
.background, #background, body{  
background:#F04281 }
```

If only the background color should be changed can be used:

```
.background{ background-color:#F04281 }
```

This example shows the color as background, it is applied via the CSS property "background".

To optimize and compress your CSS code, you can use our [online CSS compressor and optimizer](#) based on csstidy. If you want to create a linear or radial gradient as background or border, check our [CSS Gradient Generator](#).

Hey! You found this booklet interesting? Support Converting Colors with the new Membership Option!

The pro membership hides all ads, plus gives you double the colors in the color bucket, and more awesome pro features!

[Learn more, Memberships starting at \\$2.50/m!](#)

**Follow me
on Twitter!**

@ConvertingColor