

# Converting Colors

Decimal(15751041)

Have a look what the booklet for  
Decimal(15751041) contains.

<b>Decimal(15751041)</b> .....	3
<i><b>Conversions</b></i> .....	4
<i><b>Details</b></i> .....	6
<i><b>Harmonies</b></i> .....	11
<i><b>Previews</b></i> .....	23
<i><b>Color Blindness Simulation</b></i> .....	26
<i><b>CSS Examples</b></i> .....	29

# **Color**

**Decimal(15751041)**

# Conversions

## Conversions Part 1

<b>Format</b>	<b>Color</b>
Hex	F05781
RGB	240, 87, 129
RGB Percent	94%, 34%, 51%
CMY	0.0588, 0.6588, 0.4941
CMYK	0.00, 0.64, 0.46, 0.06
HSL	344°, 84%, 64%
HSV	344°, 64%, 94%
XYZ	43.3058, 26.9266, 23.6838
YIQ	137.5350, 77.7060, 45.4980

# Conversions

## Conversions Part 2

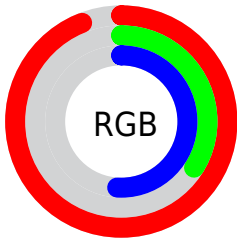
Format	Color
R <sub>Y</sub> B	240, 87, 129
Decimal	15751041
CIE Lab	58.91, 61.87, 8.87
CIE LCh	59, 62.505, 8.157
Yxy	26.9266, 0.4611, 0.2867
Android (android.graphics.Color)	4293941121 (0xFFFF05781)
YUV	137.5350, -4.2078, 89.8618
Hunter-Lab	51.8909, 58.1591, 9.2628

# Details

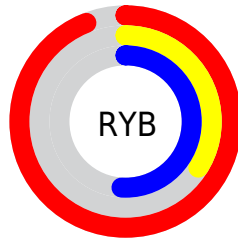
The Decimal color **15751041** is a light color, and the websafe version is hex **FF6699**. The color can be described as light muted rose. A complement of this color would be **5763270**, and the grayscale version is **9079434**.

A 20% lighter version of the original color is **16748726**, and **11735888** is the 20% darker color. If you saturate the color by 10%, you get **15744880**, and if you desaturate by 10%, it is **15757202**.

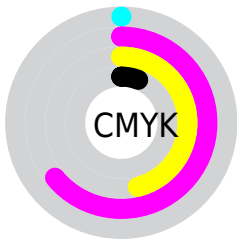
# Distribution



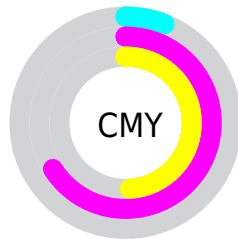
- Red (94%)
- Green (34%)
- Blue (51%)



- Red (94%)
- Yellow (34%)
- Blue (51%)



- Cyan (0%)
- Magenta (64%)
- Yellow (46%)
- Black (6%)



- Cyan (6%)
- Magenta (66%)
- Yellow (49%)

# Brightness & Saturation Gradients

These gradients show how the Decimal color 15751041 changes by changing the brightness by 10 percent. The first figure shows a shift by +10% for each color and the second figure -10%.

Similar to the brightness gradients but the following saturation gradients show a change of the Decimal color 15751041 by changing the saturation by 10% instead.



 15751041

 15751041

16777215

 13711720

 16748726

 11735888

 16756177

 9764921

 16763373

 7798820

 16771071

 5898255

 4128771

 1769473

 0

 15751041

 15751041

■ 15744880

■ 15757202

■ 15738718

■ 15763364

■ 15732557

■ 15769525

■ 15728706

■ 15775687

■ 15781848

■ 15788009

■ 15794171

■ 15794175

# Harmonies

## Analogous

The Analogous color harmony consists of three colors that are next to each other on the color wheel.



14377144



15751041



15230285

# Triad

The Triadic color harmony groups three colors that are evenly spaced from another and form a triangle on the color wheel.



15751041



6331695



40691

# Complementary

The Complementary color scheme is a pair of colors which are on the opposite of each other on the color wheel.



15751041



5763270

# Split Complementary

Split-complementary colors differ from the complementary color scheme. The scheme consists of three colors, the original color and two neighbors of the complement color.



42704



15751041



42339

# Square

The Square scheme is like the rectangle color scheme, but the four colors are evenly spaced on the color wheel.



15751041



10194951



42908



2002939

# Rectangle

The Rectangle color scheme consists of four colors that form a rectangle on the color wheel.



15751041



13988910



42908



41706



# Sweetspot

The Sweet Spot groups the original color and five complimentary colors.



15751041



16764892



12933104



8413802



0



8421504



# Same Dimension

The Same Dimension uses a secret algorithm to generate beautiful new colors.



15751041



16726897



15759447



7892079



12058674



3670031



# Inverse Universe

The Inverse Universe completely reimagines the original color for something new.



15751041



16726897



5754864



7892079



12058674



3670031



# Previews

## White Background



This preview shows how the Decimal color 15751041 looks on a white background.

## Color Contrast Check

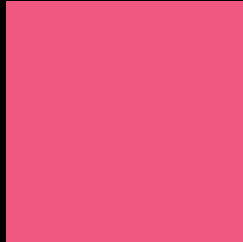
Large Text (above 18pt) WCAG AA ✓ Pass

Any Text WCAG AA × Fail

Large Text (above 18pt) WCAG AAA × Fail

Any Text WCAG AAA × Fail

# Black Background



This preview shows how the Decimal color 15751041 looks on a black background.

## Color Contrast Check

Large Text (above 18pt) WCAG AA ✓ Pass

Any Text WCAG AA ✓ Pass

Large Text (above 18pt) WCAG AAA ✓ Pass

Any Text WCAG AAA × Fail

If you want to check with other color combinations, try the [Color Contrast Checker](#).



## Decimal 15751041 Background



This preview shows how black text looks on a background with the Decimal color 15751041.




This preview shows how white text looks on a background with the Decimal color 15751041.

# Color Blindness Simulation

Color vision deficiency is a very complex topic, and I could not describe the different causes any better than Wikipedia does, so if you want to learn more, you should check out their [article about color blindness](#).

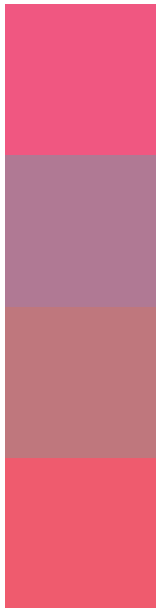
## Dichromacy





**Tritanopia**  
15621475

# Trichromacy



**Original Color**  
15751041

**Protanomaly**  
11565460

**Deuteranomaly**  
12547965

**Tritanomaly**  
15686510

# Monochromacy



**Original Color**  
15751041

**Achromatopsia**  
9079434

**Achromatomaly**  
11499399

# CSS Examples

## Text

The CSS property to change the color of the text to Decimal 15751041 is called "color". The color property can be set on classes, ids or directly on the HTML element.

This example shows how text in the color #F05781 looks like.

```
.text, #text, p{  
  color:#F05781  
}
```

If you want to add a text shadow in that color use the text-shadow property, you can generate a text shadow directly with our [CSS Text Shadow Generator](#).

Here you see how black text with a 4 pixel #F05781 colored shadow looks like.

```
.shadow{ text-shadow: 4px 4px 2px #F05781
}
```

## Border

The CSS property to change the border of an element to Decimal 15751041 is called "border". The border property can be set on classes, ids or directly on the HTML element.

This example shows the color as border, it can be applied via the CSS property "border" or "border-color".

```
.border, #border, table{ border:4px solid
#F05781 }
```

If only the border color should be changed use the property `border-color`.

```
.border{ border-color:#F05781 }
```

If you want to add a box shadow in that color use:

Here you see how a box with a 4 pixel #F05781 colored shadow looks like.

```
.boxshadow{ -moz-box-shadow:4px 4px 4px  
4px #F05781; -webkit-box-shadow:4px 4px  
4px 4px #F05781; box-shadow:4px 4px 4px  
4px #F05781 }
```

# Background

The CSS property to change the background color of an element to Decimal 15751041 is called "background". The background property can be set on classes, ids or directly on the HTML element.

```
.background, #background, body{  
background:#F05781 }
```

If only the background color should be changed can be used:

```
.background{ background-color:#F05781 }
```

This example shows the color as background, it is applied via the CSS property "background".

To optimize and compress your CSS code, you can use our [online CSS compressor and optimizer](#) based on csstidy. If you want to create a linear or radial gradient as background or border, check our [CSS Gradient Generator](#).



Hey! You found this booklet interesting? Support Converting Colors with the new Membership Option!

The pro membership hides all ads, plus gives you double the colors in the color bucket, and more awesome pro features!

**[Learn more, Memberships starting at \\$2.50/m!](#)**

**Follow me  
on Twitter!**

@ConvertingColor