

# Converting Colors

Decimal(15751045)

Have a look what the booklet for  
Decimal(15751045) contains.

<b>Decimal(15751045)</b> .....	3
<i><b>Conversions</b></i> .....	4
<i><b>Details</b></i> .....	6
<i><b>Harmonies</b></i> .....	11
<i><b>Previews</b></i> .....	23
<i><b>Color Blindness Simulation</b></i> .....	26
<i><b>CSS Examples</b></i> .....	29

# **Color**

**Decimal(15751045)**

# Conversions

## Conversions Part 1

<b>Format</b>	<b>Color</b>
Hex	F05785
RGB	240, 87, 133
RGB Percent	94%, 34%, 52%
CMY	0.0588, 0.6588, 0.4784
CMYK	0.00, 0.64, 0.45, 0.06
HSL	342°, 84%, 64%
HSV	342°, 64%, 94%
XYZ	43.5770, 27.0351, 25.1118
YIQ	137.9910, 76.4220, 46.7420

# Conversions

## Conversions Part 2

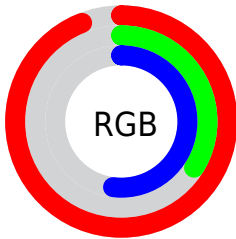
<b>Format</b>	<b>Color</b>
<a href="#">RYB</a>	<a href="#">240, 87, 133</a>
Decimal	<a href="#">15751045</a>
CIELab	<a href="#">59.01, 62.24, 6.67</a>
CIElCh	<a href="#">59, 62.597, 6.118</a>
Yxy	<a href="#">27.0351, 0.4552, 0.2824</a>
Android (android.graphics.Color)	<a href="#">4293941125</a> ( <a href="#">0xFFFF05785</a> )
YUV	<a href="#">137.9910, -2.4606, 89.4619</a>
Hunter-Lab	<a href="#">51.9953, 58.6082, 7.7618</a>

# Details

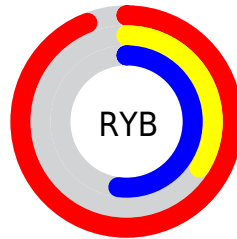
The Decimal color **15751045** is a light color, and the websafe version is hex **FF6699**. The color can be described as light muted rose. A complement of this color would be **5763266**, and the grayscale version is **9079434**.

A 20% lighter version of the original color is **16748730**, and **11735892** is the 20% darker color. If you saturate the color by 10%, you get **15744884**, and if you desaturate by 10%, it is **15757206**.

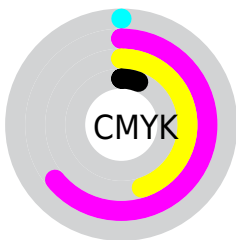
# Distribution



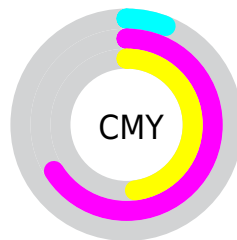
- Red (94%)
- Green (34%)
- Blue (52%)



- Red (94%)
- Yellow (34%)
- Blue (52%)



- Cyan (0%)
- Magenta (64%)
- Yellow (45%)
- Black (6%)



- Cyan (6%)
- Magenta (66%)
- Yellow (48%)

# Brightness & Saturation Gradients

These gradients show how the Decimal color 15751045 changes by changing the brightness by 10 percent. The first figure shows a shift by +10% for each color and the second figure -10%.

Similar to the brightness gradients but the following saturation gradients show a change of the Decimal color 15751045 by changing the saturation by 10% instead.



 15751045

 15751045

16777215

 13711724

 16748730

 11735892

 16756182

 9764925

 16763634

 7798824

 16771071

 5898259

 4128771

 1835009

 0

 15751045

 15751045

■ 15744884

■ 15757206

■ 15738723

■ 15763367

■ 15732563

■ 15769527

■ 15728712

■ 15775688

■ 15781849

■ 15788010

■ 15794170

■ 15794175

# Harmonies

## Analogous

The Analogous color harmony consists of three colors that are next to each other on the color wheel.



14246588



15751045



15295568

# Triad

The Triadic color harmony groups three colors that are evenly spaced from another and form a triangle on the color wheel.



15751045



6659372



40946

# Complementary

The Complementary color scheme is a pair of colors which are on the opposite of each other on the color wheel.



15751045



5763266

# Split Complementary

Split-complementary colors differ from the complementary color scheme. The scheme consists of three colors, the original color and two neighbors of the complement color.



42702



15751045



42335

# Square

The Square scheme is like the rectangle color scheme, but the four colors are evenly spaced on the color wheel.



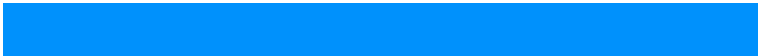
15751045



10456838



43160



37372

# Rectangle

The Rectangle color scheme consists of four colors that form a rectangle on the color wheel.



15751045



14185265



43160



41961



# Sweetspot

The Sweet Spot groups the original color and five complimentary colors.



15751045



16764893



12605424



8413803



0



8421504



# Same Dimension

The Same Dimension uses a secret algorithm to generate beautiful new colors.



15751045



16726902



15758167



7892079



12058679



3670033



# Inverse Universe

The Inverse Universe completely reimagines the original color for something new.



15751045



16726902



5756144



7892079



12058679



3670033



# Previews

## White Background



This preview shows how the Decimal color 15751045 looks on a white background.

## Color Contrast Check

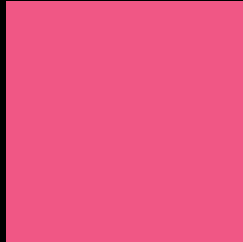
Large Text (above 18pt) WCAG AA ✓ Pass

Any Text WCAG AA × Fail

Large Text (above 18pt) WCAG AAA × Fail

Any Text WCAG AAA × Fail

# Black Background



This preview shows how the Decimal color 15751045 looks on a black background.

## Color Contrast Check

Large Text (above 18pt) WCAG AA ✓ Pass

Any Text WCAG AA ✓ Pass

Large Text (above 18pt) WCAG AAA ✓ Pass

Any Text WCAG AAA × Fail

If you want to check with other color combinations, try the [Color Contrast Checker](#).



## Decimal 15751045 Background



This preview shows how black text looks on a background with the Decimal color 15751045.



This preview shows how white text looks on a background with the Decimal color 15751045.

# Color Blindness Simulation

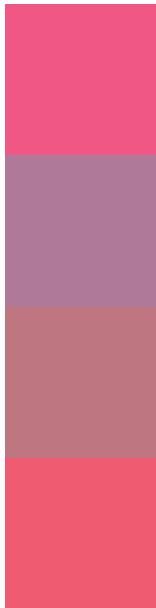
Color vision deficiency is a very complex topic, and I could not describe the different causes any better than Wikipedia does, so if you want to learn more, you should check out their [article about color blindness](#).

## Dichromacy





# Trichromacy



**Original Color**  
15751045

**Protanomaly**  
11499929

**Deuteranomaly**  
12482433

**Tritanomaly**  
15686512

# Monochromacy



**Original Color**  
15751045

**Achromatopsia**  
9079434

**Achromatomaly**  
11499400

# CSS Examples

## Text

The CSS property to change the color of the text to Decimal 15751045 is called "color". The color property can be set on classes, ids or directly on the HTML element.

This example shows how text in the color #F05785 looks like.

```
.text, #text, p{  
  color:#F05785  
}
```

If you want to add a text shadow in that color use the text-shadow property, you can generate a text shadow directly with our [CSS Text Shadow Generator](#).

Here you see how black text with a 4 pixel #F05785 colored shadow looks like.

```
.shadow{ text-shadow: 4px 4px 2px #F05785
}
```

## Border

The CSS property to change the border of an element to Decimal 15751045 is called "border". The border property can be set on classes, ids or directly on the HTML element.

This example shows the color as border, it can be applied via the CSS property "border" or "border-color".

```
.border, #border, table{ border:4px solid
#F05785 }
```

If only the border color should be changed use the property `border-color`.

```
.border{ border-color:#F05785 }
```

If you want to add a box shadow in that color use:

Here you see how a box with a 4 pixel #F05785 colored shadow looks like.

```
.boxshadow{ -moz-box-shadow:4px 4px 4px  
4px #F05785; -webkit-box-shadow:4px 4px  
4px 4px #F05785; box-shadow:4px 4px 4px  
4px #F05785 }
```

# Background

The CSS property to change the background color of an element to Decimal 15751045 is called "background". The background property can be set on classes, ids or directly on the HTML element.

```
.background, #background, body{  
background:#F05785 }
```

If only the background color should be changed can be used:

```
.background{ background-color:#F05785 }
```

This example shows the color as background, it is applied via the CSS property "background".

To optimize and compress your CSS code, you can use our [online CSS compressor and optimizer](#) based on csstidy. If you want to create a linear or radial gradient as background or border, check our [CSS Gradient Generator](#).



Hey! You found this booklet interesting? Support Converting Colors with the new Membership Option!

The pro membership hides all ads, plus gives you double the colors in the color bucket, and more awesome pro features!

**[Learn more, Memberships starting at \\$2.50/m!](#)**

**Follow me  
on Twitter!**

@ConvertingColor