

# Converting Colors

Decimal(15753353)

Have a look what the booklet for  
Decimal(15753353) contains.

<b>Decimal(15753353)</b> .....	3
<i><b>Conversions</b></i> .....	4
<i><b>Details</b></i> .....	6
<i><b>Harmonies</b></i> .....	11
<i><b>Previews</b></i> .....	23
<i><b>Color Blindness Simulation</b></i> .....	26
<i><b>CSS Examples</b></i> .....	29

# **Color**

**Decimal(15753353)**

# Conversions

## Conversions Part 1

Format	Color
Hex	F06089
RGB	240, 96, 137
RGB Percent	94%, 38%, 54%
CMY	0.0588, 0.6235, 0.4627
CMYK	0.00, 0.60, 0.43, 0.06
HSL	343°, 83%, 66%
HSV	343°, 60%, 94%
XYZ	44.6334, 28.6971, 26.8536
YIQ	143.7300, 72.6630, 43.2790

# Conversions

## Conversions Part 2

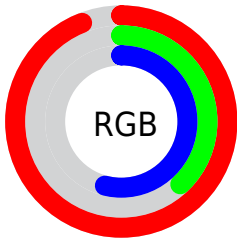
<b>Format</b>	<b>Color</b>
<b>R<sub>YB</sub></b>	240, 96, 137
Decimal	15753353
CIE <sub>Lab</sub>	60.51, 58.84, 6.50
CIE <sub>LCh</sub>	61, 59.195, 6.301
Yxy	28.6971, 0.4455, 0.2864
Android (android.graphics.Color)	4293943433 (0xFFFF06089)
YUV	143.7300, -3.3179, 84.4288
Hunter-Lab	53.5697, 54.9762, 7.7778

# Details

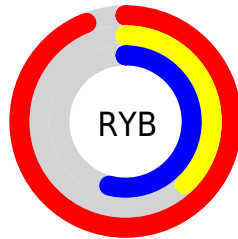
The Decimal color **15753353** is a light color, and the websafe version is hex **FF6699**. A complement of this color would be **6353095**, and the grayscale version is **9474192**.

A 20% lighter version of the original color is **16750782**, and **11740247** is the 20% darker color. If you saturate the color by 10%, you get **15747192**, and if you desaturate by 10%, it is **15759514**.

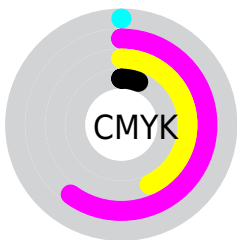
# Distribution



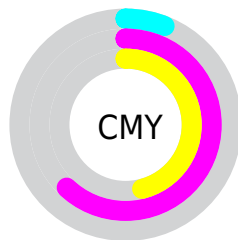
- Red (94%)
- Green (38%)
- Blue (54%)



- Red (94%)
- Yellow (38%)
- Blue (54%)



- Cyan (0%)
- Magenta (60%)
- Yellow (43%)
- Black (6%)



- Cyan (6%)
- Magenta (62%)
- Yellow (46%)

# Brightness & Saturation Gradients

These gradients show how the Decimal color 15753353 changes by changing the brightness by 10 percent. The first figure shows a shift by +10% for each color and the second figure -10%.

Similar to the brightness gradients but the following saturation gradients show a change of the Decimal color 15753353 by changing the saturation by 10% instead.



 15753353

 15753353

16777215

 13714288


 16750782

 11740247

 16758234

 9830464

 16765686

 7864363

 16773119

 5963799

 4259843

 2097153

 0

 15753353

 15753353

 15747192

 15759514

 15741031

 15765675

 15734869

 15771836

 15728708

 15777998

 15784159

 15790320

 15794175

# Harmonies

## Analogous

The Analogous color harmony consists of three colors that are next to each other on the color wheel.



14313917



15753353



15362903

# Triad

The Triadic color harmony groups three colors that are evenly spaced from another and form a triangle on the color wheel.



15753353



7118903



41713

# Complementary

The Complementary color scheme is a pair of colors which are on the opposite of each other on the color wheel.



15753353



6353095

# Split Complementary

Split-complementary colors differ from the complementary color scheme. The scheme consists of three colors, the original color and two neighbors of the complement color.



43470



15753353



43110

# Square

The Square scheme is like the rectangle color scheme, but the four colors are evenly spaced on the color wheel.



15753353



10720028



43932



2921722

# Rectangle

The Rectangle color scheme consists of four colors that form a rectangle on the color wheel.



15753353



14252346



43932



42728



# Sweetspot

The Sweet Spot groups the original color and five complimentary colors.



15753353



16765406



12935408



8414059



0



8421504



# Same Dimension

The Same Dimension uses a secret algorithm to generate beautiful new colors.



15753353



16729980



15760736



7892079



12058676



3670032



# Inverse Universe

The Inverse Universe completely reimagines the original color for something new.



15753353



16729980



6345712



7892079



12058676



3670032



# Previews

## White Background



This preview shows how the Decimal color 15753353 looks on a white background.

## Color Contrast Check

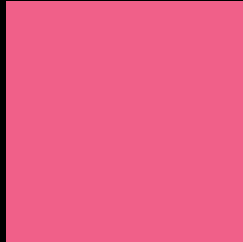
Large Text (above 18pt) WCAG AA ✓ Pass

Any Text WCAG AA × Fail

Large Text (above 18pt) WCAG AAA × Fail

Any Text WCAG AAA × Fail

# Black Background



This preview shows how the Decimal color 15753353 looks on a black background.

## Color Contrast Check

Large Text (above 18pt) WCAG AA ✓ Pass

Any Text WCAG AA ✓ Pass

Large Text (above 18pt) WCAG AAA ✓ Pass

Any Text WCAG AAA × Fail

If you want to check with other color combinations, try the [Color Contrast Checker](#).



## Decimal 15753353 Background



This preview shows how black text looks on a background with the Decimal color 15753353.




This preview shows how white text looks on a background with the Decimal color 15753353.

# Color Blindness Simulation

Color vision deficiency is a very complex topic, and I could not describe the different causes any better than Wikipedia does, so if you want to learn more, you should check out their [article about color blindness](#).

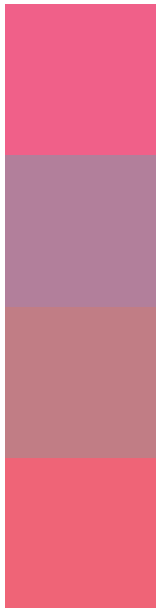
## Dichromacy





**Tritanopia**  
15623788

# Trichromacy



**Original Color**  
15753353

**Protanomaly**  
11698075

**Deuteranomaly**  
12680581

**Tritanomaly**  
15688823

# Monochromacy



**Original Color**  
15753353

**Achromatopsia**  
9474192

**Achromatomaly**  
11763597

# CSS Examples

## Text

The CSS property to change the color of the text to Decimal 15753353 is called "color". The color property can be set on classes, ids or directly on the HTML element.

This example shows how text in the color #F06089 looks like.

```
.text, #text, p{  
    color:#F06089  
}
```

If you want to add a text shadow in that color use the text-shadow property, you can generate a text shadow directly with our [CSS Text Shadow Generator](#).

Here you see how black text with a 4 pixel #F06089 colored shadow looks like.

```
.shadow{ text-shadow: 4px 4px 2px #F06089
}
```

## Border

The CSS property to change the border of an element to Decimal 15753353 is called "border". The border property can be set on classes, ids or directly on the HTML element.

This example shows the color as border, it can be applied via the CSS property "border" or "border-color".

```
.border, #border, table{ border:4px solid
#F06089 }
```

If only the border color should be changed use the property `border-color`.

```
.border{ border-color:#F06089 }
```

If you want to add a box shadow in that color use:

Here you see how a box with a 4 pixel #F06089 colored shadow looks like.

```
.boxshadow{ -moz-box-shadow:4px 4px 4px  
4px #F06089; -webkit-box-shadow:4px 4px  
4px 4px #F06089; box-shadow:4px 4px 4px  
4px #F06089 }
```

# Background

The CSS property to change the background color of an element to Decimal 15753353 is called "background". The background property can be set on classes, ids or directly on the HTML element.

```
.background, #background, body{  
background:#F06089 }
```

If only the background color should be changed can be used:

```
.background{ background-color:#F06089 }
```

This example shows the color as background, it is applied via the CSS property "background".

To optimize and compress your CSS code, you can use our [online CSS compressor and optimizer](#) based on csstidy. If you want to create a linear or radial gradient as background or border, check our [CSS Gradient Generator](#).



Hey! You found this booklet interesting? Support Converting Colors with the new Membership Option!

The pro membership hides all ads, plus gives you double the colors in the color bucket, and more awesome pro features!

**[Learn more, Memberships starting at \\$2.50/m!](#)**

**Follow me  
on Twitter!**

@ConvertingColor