

Converting Colors

Decimal(15764350)

Have a look what the booklet for
Decimal(15764350) contains.

Decimal(15764350)	3
<i>Conversions</i>	4
<i>Details</i>	6
<i>Harmonies</i>	11
<i>Previews</i>	23
<i>Color Blindness Simulation</i>	26
<i>CSS Examples</i>	29

Color

Decimal(15764350)

Conversions

Conversions Part 1

Format	Color
Hex	F08B7E
RGB	240, 139, 126
RGB Percent	94%, 55%, 49%
CMY	0.0588, 0.4549, 0.5059
CMYK	0.00, 0.42, 0.47, 0.06
HSL	7°, 79%, 72%
HSV	7°, 48%, 94%
XYZ	48.9337, 38.4969, 24.5902
YIQ	167.7170, 64.3690, 17.3690

Conversions

Conversions Part 2

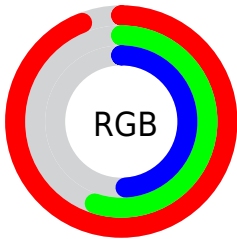
Format	Color
R _Y B	240, 141, 126
Decimal	15764350
CIE Lab	68.39, 37.01, 23.70
CIE LCh	68, 43.944, 32.632
Yxy	38.4969, 0.4368, 0.3437
Android (android.graphics.Color)	4293954430 (0xFFFF08B7E)
YUV	167.7170, -20.5665, 63.3922
Hunter-Lab	62.0458, 32.1974, 19.9341

Details

The Decimal color **15764350** is a light color, and the websafe version is hex **FF9999**. A complement of this color would be **8315888**, and the grayscale version is **11053224**.

A 20% lighter version of the original color is **16761523**, and **11818829** is the 20% darker color. If you saturate the color by 10%, you get **15758950**, and if you desaturate by 10%, it is **15769750**.

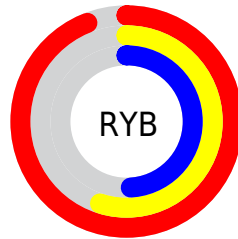
Distribution



Red (94%)

Green (55%)

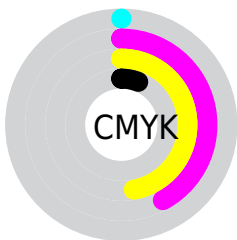
Blue (49%)



Red (94%)

Yellow (55%)

Blue (49%)

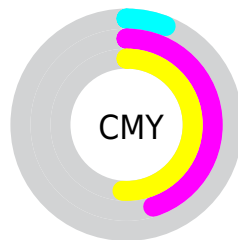


Cyan (0%)

Magenta (42%)

Yellow (47%)

Black (6%)



Cyan (6%)

Magenta (45%)

Yellow (51%)

Brightness & Saturation Gradients

These gradients show how the Decimal color 15764350 changes by changing the brightness by 10 percent. The first figure shows a shift by +10% for each color and the second figure -10%.

Similar to the brightness gradients but the following saturation gradients show a change of the Decimal color 15764350 by changing the saturation by 10% instead.

 15764350

 15764350

16777215

 13791589

 16761523

 11818829

 16768718

 9911862

 16776171

 8070433

 6227723

 4390912

 2818049

 0

 15764350

 15764350

 15758950

 15769750

 15753294

 15775406

 15747894

 15780806

 15742494

 15786206

 15737094

 15791606

 15735552

 15794175

Harmonies

Analogous

The Analogous color harmony consists of three colors that are next to each other on the color wheel.



15828645



15764350



14522465

Triad

The Triadic color harmony groups three colors that are evenly spaced from another and form a triangle on the color wheel.



15764350



6404225



7187190

Complementary

The Complementary color scheme is a pair of colors which are on the opposite of each other on the color wheel.



15764350



8315888

Split Complementary

Split-complementary colors differ from the complementary color scheme. The scheme consists of three colors, the original color and two neighbors of the complement color.



46316



15764350



48041

Square

The Square scheme is like the rectangle color scheme, but the four colors are evenly spaced on the color wheel.



15764350



9679202



47824



11508714

Rectangle

The Rectangle color scheme consists of four colors that form a rectangle on the color wheel.



15764350



13148503



47824



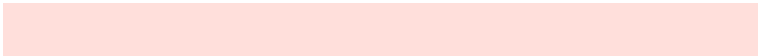
5287669

Sweetspot

The Sweet Spot groups the original color and five complimentary colors.



15764350



16768987



15761125



8416362



0



8421504

Same Dimension

The Same Dimension uses a secret algorithm to generate beautiful new colors.



15764350



16744046



15778430



7892332



12064000



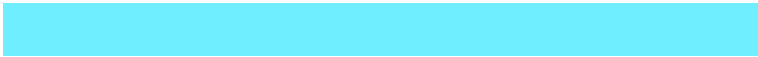
3671552

Inverse Universe

The Inverse Universe completely reimagines the original color for something new.



8315888



7270143



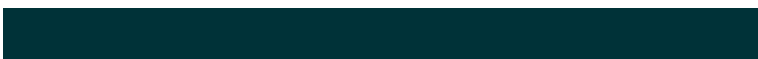
8301808



7108216



41912



12856

Previews

White Background



This preview shows how the Decimal color 15764350 looks on a white background.

Color Contrast Check

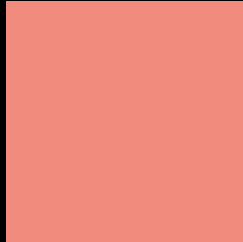
Large Text (above 18pt) WCAG AA × Fail

Any Text WCAG AA × Fail

Large Text (above 18pt) WCAG AAA × Fail

Any Text WCAG AAA × Fail

Black Background



This preview shows how the Decimal color 15764350 looks on a black background.

Color Contrast Check

Large Text (above 18pt) WCAG AA ✓ Pass

Any Text WCAG AA ✓ Pass

Large Text (above 18pt) WCAG AAA ✓ Pass

Any Text WCAG AAA ✓ Pass

If you want to check with other color combinations, try the [Color Contrast Checker](#).

Decimal 15764350 Background



This preview shows how black text looks on a background with the Decimal color 15764350.



This preview shows how white text looks on a background with the Decimal color 15764350.

Color Blindness Simulation

Color vision deficiency is a very complex topic, and I could not describe the different causes any better than Wikipedia does, so if you want to learn more, you should check out their [article about color blindness](#).

Dichromacy



Original Color
15764350

Protanopia
11642763

Deuteranopia
13017210



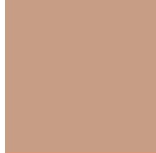
Tritanopia
15894674

Trichromacy



Original Color

15764350



Protanomaly

13147526



Deuteranomaly

13998203



Tritanomaly

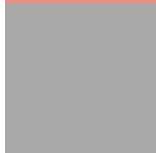
15829387

Monochromacy



Original Color

15764350



Achromatopsia

11053224



Achromatomaly

12754329

CSS Examples

Text

The CSS property to change the color of the text to Decimal 15764350 is called "color". The color property can be set on classes, ids or directly on the HTML element.

This example shows how text in the color #F08B7E looks like.

```
.text, #text, p{  
  color:#F08B7E  
}
```

If you want to add a text shadow in that color use the text-shadow property, you can generate a text shadow directly with our [CSS Text Shadow Generator](#).

Here you see how black text with a 4 pixel #F08B7E colored shadow looks like.

```
.shadow{ text-shadow: 4px 4px 2px #F08B7E
}
```

Border

The CSS property to change the border of an element to Decimal 15764350 is called "border". The border property can be set on classes, ids or directly on the HTML element.

This example shows the color as border, it can be applied via the CSS property "border" or "border-color".

```
.border, #border, table{ border:4px solid
#F08B7E }
```

If only the border color should be changed use the property `border-color`.

```
.border{ border-color:#F08B7E }
```

If you want to add a box shadow in that color use:

Here you see how a box with a 4 pixel #F08B7E colored shadow looks like.

```
.boxshadow{ -moz-box-shadow:4px 4px 4px  
4px #F08B7E; -webkit-box-shadow:4px 4px  
4px 4px #F08B7E; box-shadow:4px 4px 4px  
4px #F08B7E }
```

Background

The CSS property to change the background color of an element to Decimal 15764350 is called "background". The background property can be set on classes, ids or directly on the HTML element.

```
.background, #background, body{  
background:#F08B7E }
```

If only the background color should be changed can be used:

```
.background{ background-color:#F08B7E }
```

This example shows the color as background, it is applied via the CSS property "background".

To optimize and compress your CSS code, you can use our [online CSS compressor and optimizer](#) based on csstidy. If you want to create a linear or radial gradient as background or border, check our [CSS Gradient Generator](#).

Hey! You found this booklet interesting? Support Converting Colors with the new Membership Option!

The pro membership hides all ads, plus gives you double the colors in the color bucket, and more awesome pro features!

[Learn more, Memberships starting at \\$2.50/m!](#)

**Follow me
on Twitter!**

@ConvertingColor