

Converting Colors

Decimal(15764909)

Have a look what the booklet for
Decimal(15764909) contains.

Decimal(15764909)	3
<i>Conversions</i>	4
<i>Details</i>	6
<i>Harmonies</i>	11
<i>Previews</i>	23
<i>Color Blindness Simulation</i>	26
<i>CSS Examples</i>	29

Color

Decimal(15764909)

Conversions

Conversions Part 1

Format	Color
Hex	F08DAD
RGB	240, 141, 173
RGB Percent	94%, 55%, 68%
CMY	0.0588, 0.4471, 0.3216
CMYK	0.00, 0.41, 0.28, 0.06
HSL	341°, 77%, 75%
HSV	341°, 41%, 94%
XYZ	53.0029, 40.5921, 44.5767
YIQ	174.2490, 48.7320, 30.9400

Conversions

Conversions Part 2

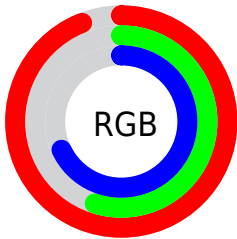
Format	Color
R _Y B	240, 141, 173
Decimal	15764909
CIE Lab	69.89, 41.34, -0.42
CIE LCh	70, 41.341, 359.415
Yxy	40.5921, 0.3836, 0.2938
Android (android.graphics.Color)	4293954989 (0xFFFF08DAD)
YUV	174.2490, -0.6158, 57.6636
Hunter-Lab	63.7120, 37.0007, 3.1156

Details

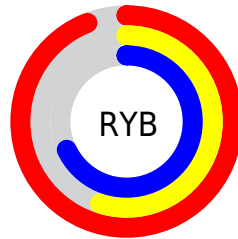
The Decimal color **15764909** is a light color, and the websafe version is hex **FF99CC**. A complement of this color would be **9302224**, and the grayscale version is **11447982**.

A 20% lighter version of the original color is **16762084**, and **11950201** is the 20% darker color. If you saturate the color by 10%, you get **15758749**, and if you desaturate by 10%, it is **15771069**.

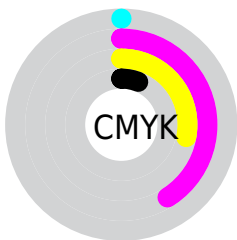
Distribution



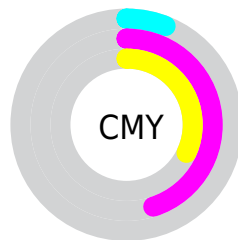
- Red (94%)
- Green (55%)
- Blue (68%)



- Red (94%)
- Yellow (55%)
- Blue (68%)



- Cyan (0%)
- Magenta (41%)
- Yellow (28%)
- Black (6%)



- Cyan (6%)
- Magenta (45%)
- Yellow (32%)

Brightness & Saturation Gradients

These gradients show how the Decimal color 15764909 changes by changing the brightness by 10 percent. The first figure shows a shift by +10% for each color and the second figure -10%.

Similar to the brightness gradients but the following saturation gradients show a change of the Decimal color 15764909 by changing the saturation by 10% instead.

 15764909  15764909

16777215  13857426

 16762084  11950201

 16769535  10043232

16776959  8267080

 6489394

 4718621

 3342338

 0

 15764909  15764909

 15758749

 15771069

 15752589

 15777229

 15746428

 15783390

 15740268

 15789550

 15734108

 15794174

 15728718

 15794175

Harmonies

Analogous

The Analogous color harmony consists of three colors that are next to each other on the color wheel.



14259410



15764909



15896712

Triad

The Triadic color harmony groups three colors that are evenly spaced from another and form a triangle on the color wheel.



15764909



10335336



965098

Complementary

The Complementary color scheme is a pair of colors which are on the opposite of each other on the color wheel.



15764909



9302224

Split Complementary

Split-complementary colors differ from the complementary color scheme. The scheme consists of three colors, the original color and two neighbors of the complement color.



48846



15764909



7322499

Square

The Square scheme is like the rectangle color scheme, but the four colors are evenly spaced on the color wheel.



15764909



12822623



3456681



7385077

Rectangle

The Rectangle color scheme consists of four colors that form a rectangle on the color wheel.



15764909



15308659



3456681



48099

Sweetspot

The Sweet Spot groups the original color and five complimentary colors.



15764909



16769258



13602288



8416883



0



8421504

Same Dimension

The Same Dimension uses a secret algorithm to generate beautiful new colors.



15764909



16744617



15768973



7892080



12058683



3670034

Inverse Universe

The Inverse Universe completely reimagines the original color for something new.



15764909



16744617



9297904



7892080



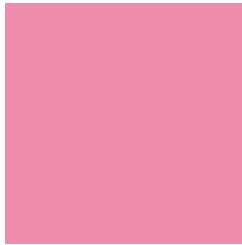
12058683



3670034

Previews

White Background



This preview shows how the Decimal color 15764909 looks on a white background.

Color Contrast Check

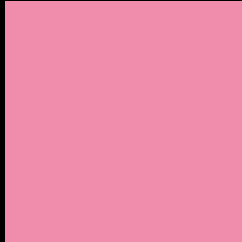
Large Text (above 18pt) WCAG AA × Fail

Any Text WCAG AA × Fail

Large Text (above 18pt) WCAG AAA × Fail

Any Text WCAG AAA × Fail

Black Background



This preview shows how the Decimal color 15764909 looks on a black background.

Color Contrast Check

Large Text (above 18pt) WCAG AA ✓ Pass

Any Text WCAG AA ✓ Pass

Large Text (above 18pt) WCAG AAA ✓ Pass

Any Text WCAG AAA ✓ Pass

If you want to check with other color combinations, try the [Color Contrast Checker](#).

Decimal 15764909 Background



This preview shows how black text looks on a background with the Decimal color 15764909.



This preview shows how white text looks on a background with the Decimal color 15764909.

Color Blindness Simulation

Color vision deficiency is a very complex topic, and I could not describe the different causes any better than Wikipedia does, so if you want to learn more, you should check out their [article about color blindness](#).


Dichromacy



Original Color
15764909

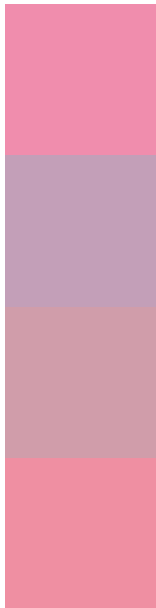
Protanopia
11119294

Deuteranopia
12428969



Tritanopia
15634587

Trichromacy



Original Color
15764909

Protanomaly
12820408

Deuteranomaly
13671850

Tritanomaly
15699874

Monochromacy



Original Color
15764909

Achromatopsia
11447982

Achromatomaly
13017774

CSS Examples

Text

The CSS property to change the color of the text to Decimal 15764909 is called "color". The color property can be set on classes, ids or directly on the HTML element.

This example shows how text in the color #F08DAD looks like.

```
.text, #text, p{  
    color:#F08DAD  
}
```

If you want to add a text shadow in that color use the text-shadow property, you can generate a text shadow directly with our [CSS Text Shadow Generator](#).

Here you see how black text with a 4 pixel #F08DAD colored shadow looks like.

```
.shadow{ text-shadow: 4px 4px 2px #F08DAD
}
```

Border

The CSS property to change the border of an element to Decimal 15764909 is called "border". The border property can be set on classes, ids or directly on the HTML element.

This example shows the color as border, it can be applied via the CSS property "border" or "border-color".

```
.border, #border, table{ border:4px solid
#F08DAD }
```

If only the border color should be changed use the property `border-color`.

```
.border{ border-color:#F08DAD }
```

If you want to add a box shadow in that color use:

Here you see how a box with a 4 pixel #F08DAD colored shadow looks like.

```
.boxshadow{ -moz-box-shadow:4px 4px 4px  
4px #F08DAD; -webkit-box-shadow:4px 4px  
4px 4px #F08DAD; box-shadow:4px 4px 4px  
4px #F08DAD }
```

Background

The CSS property to change the background color of an element to Decimal 15764909 is called "background". The background property can be set on classes, ids or directly on the HTML element.

```
.background, #background, body{  
background:#F08DAD }
```

If only the background color should be changed can be used:

```
.background{ background-color:#F08DAD }
```

This example shows the color as background, it is applied via the CSS property "background".

To optimize and compress your CSS code, you can use our [online CSS compressor and optimizer](#) based on csstidy. If you want to create a linear or radial gradient as background or border, check our [CSS Gradient Generator](#).

Hey! You found this booklet interesting? Support Converting Colors with the new Membership Option!

The pro membership hides all ads, plus gives you double the colors in the color bucket, and more awesome pro features!

[Learn more, Memberships starting at \\$2.50/m!](#)

**Follow me
on Twitter!**

@ConvertingColor