

# Converting Colors

Decimal(15765919)

Have a look what the booklet for  
Decimal(15765919) contains.

<b>Decimal(15765919)</b> .....	3
<i><b>Conversions</b></i> .....	4
<i><b>Details</b></i> .....	6
<i><b>Harmonies</b></i> .....	11
<i><b>Previews</b></i> .....	23
<i><b>Color Blindness Simulation</b></i> .....	26
<i><b>CSS Examples</b></i> .....	29

# **Color**

**Decimal(15765919)**

# Conversions

## Conversions Part 1

Format	Color
Hex	F0919F
RGB	240, 145, 159
RGB Percent	94%, 57%, 62%
CMY	0.0588, 0.4314, 0.3765
CMYK	0.00, 0.40, 0.34, 0.06
HSL	351°, 76%, 75%
HSV	351°, 40%, 94%
XYZ	52.3186, 41.2793, 38.0111
YIQ	175.0010, 52.1260, 24.4940

# Conversions

## Conversions Part 2

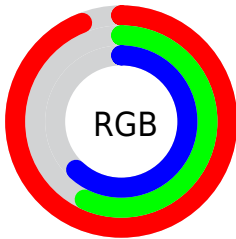
Format	Color
R <sub>Y</sub> B	240, 145, 159
Decimal	15765919
CIE Lab	70.37, 37.48, 8.09
CIE LCh	70, 38.346, 12.180
Yxy	41.2793, 0.3975, 0.3137
Android (android.graphics.Color)	4293955999 (0xFFFF0919F)
YUV	175.0010, -7.8885, 57.0041
Hunter-Lab	64.2489, 32.9188, 9.8970

# Details

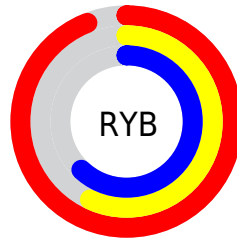
The Decimal color **15765919** is a light color, and the websafe version is hex **FF9999**. A complement of this color would be **9564386**, and the grayscale version is **11513775**.

A 20% lighter version of the original color is **16763094**, and **11951468** is the 20% darker color. If you saturate the color by 10%, you get **15759755**, and if you desaturate by 10%, it is **15772083**.

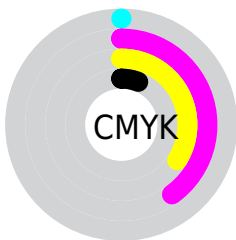
# Distribution



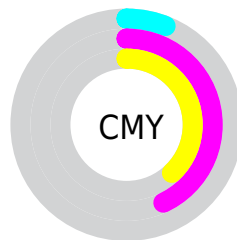
- Red (94%)
- Green (57%)
- Blue (62%)



- Red (94%)
- Yellow (57%)
- Blue (62%)



- Cyan (0%)
- Magenta (40%)
- Yellow (34%)
- Black (6%)



- Cyan (6%)
- Magenta (43%)
- Yellow (38%)

# Brightness & Saturation Gradients

These gradients show how the Decimal color 15765919 changes by changing the brightness by 10 percent. The first figure shows a shift by +10% for each color and the second figure -10%.

Similar to the brightness gradients but the following saturation gradients show a change of the Decimal color 15765919 by changing the saturation by 10% instead.



 15765919

 15765919

16777215

 13858437

 16763094

 11951468

 16770546

 10044244

 8202813

 6426407

 4653075

 3211265

 0

 15765919

 15765919

 15759755

 15772083

 15753590

 15778248

 15747426

 15784412

 15741261

 15790577

 15735097

 15794175

 15728932

 15728675

# Harmonies

## Analogous

The Analogous color harmony consists of three colors that are next to each other on the color wheel.



14914754



15765919



15374207

# Triad

The Triadic color harmony groups three colors that are evenly spaced from another and form a triangle on the color wheel.



15765919



9353335



5551854

# Complementary

The Complementary color scheme is a pair of colors which are on the opposite of each other on the color wheel.



15765919



9564386

# Split Complementary

Split-complementary colors differ from the complementary color scheme. The scheme consists of three colors, the original color and two neighbors of the complement color.



1162458



15765919



6471062

# Square

The Square scheme is like the rectangle color scheme, but the four colors are evenly spaced on the color wheel.



15765919



11906919



3063738



9546736

# Rectangle

The Rectangle color scheme consists of four colors that form a rectangle on the color wheel.



15765919



14524271



3063738



4110569



# Sweetspot

The Sweet Spot groups the original color and five complimentary colors.



15765919



16769253



14848496



8416880



0



8421504



# Same Dimension

The Same Dimension uses a secret algorithm to generate beautiful new colors.



15765919



16745879



15774353



7892078



12058651



3670024



# Inverse Universe

The Inverse Universe completely reimagines the original color for something new.



15765919



16745879



9555952



7892078



12058651



3670024



# Previews

## White Background



This preview shows how the Decimal color 15765919 looks on a white background.

## Color Contrast Check

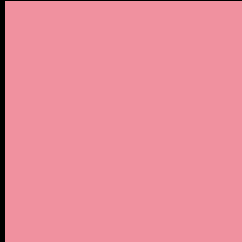
Large Text (above 18pt) WCAG AA × Fail

Any Text WCAG AA × Fail

Large Text (above 18pt) WCAG AAA × Fail

Any Text WCAG AAA × Fail

# Black Background



This preview shows how the Decimal color 15765919 looks on a black background.

## Color Contrast Check

Large Text (above 18pt) WCAG AA ✓ Pass

Any Text WCAG AA ✓ Pass

Large Text (above 18pt) WCAG AAA ✓ Pass

Any Text WCAG AAA ✓ Pass

If you want to check with other color combinations, try the [Color Contrast Checker](#).



## Decimal 15765919 Background



This preview shows how black text looks on a background with the Decimal color 15765919.



This preview shows how white text looks on a background with the Decimal color 15765919.

# Color Blindness Simulation

Color vision deficiency is a very complex topic, and I could not describe the different causes any better than Wikipedia does, so if you want to learn more, you should check out their [article about color blindness](#).

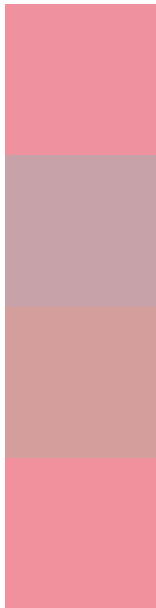
## Dichromacy





**Tritanopia**  
15765916

# Trichromacy



**Original Color**  
15765919

**Protanomaly**  
13083305

**Deuteranomaly**  
13868700

**Tritanomaly**  
15765917

# Monochromacy



**Original Color**  
15765919

**Achromatopsia**  
11513775

**Achromatomaly**  
13083817

# CSS Examples

## Text

The CSS property to change the color of the text to Decimal 15765919 is called "color". The color property can be set on classes, ids or directly on the HTML element.

This example shows how text in the color #F0919F looks like.

```
.text, #text, p{  
    color:#F0919F  
}
```

If you want to add a text shadow in that color use the text-shadow property, you can generate a text shadow directly with our [CSS Text Shadow Generator](#).

Here you see how black text with a 4 pixel #F0919F colored shadow looks like.

```
.shadow{ text-shadow: 4px 4px 2px #F0919F
}
```

## Border

The CSS property to change the border of an element to Decimal 15765919 is called "border". The border property can be set on classes, ids or directly on the HTML element.

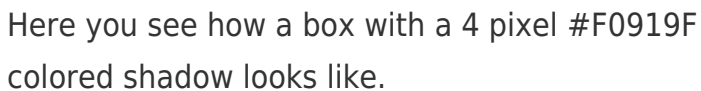
This example shows the color as border, it can be applied via the CSS property "border" or "border-color".

```
.border, #border, table{ border:4px solid
#F0919F }
```

If only the border color should be changed use the property `border-color`.

```
.border{ border-color:#F0919F }
```

If you want to add a box shadow in that color use:



Here you see how a box with a 4 pixel #F0919F colored shadow looks like.

```
.boxshadow{ -moz-box-shadow:4px 4px 4px  
4px #F0919F; -webkit-box-shadow:4px 4px  
4px 4px #F0919F; box-shadow:4px 4px 4px  
4px #F0919F }
```

# Background

The CSS property to change the background color of an element to Decimal 15765919 is called "background". The background property can be set on classes, ids or directly on the HTML element.

```
.background, #background, body{  
background:#F0919F }
```

If only the background color should be changed can be used:

```
.background{ background-color:#F0919F }
```

This example shows the color as background, it is applied via the CSS property "background".

To optimize and compress your CSS code, you can use our [online CSS compressor and optimizer](#) based on csstidy. If you want to create a linear or radial gradient as background or border, check our [CSS Gradient Generator](#).



Hey! You found this booklet interesting? Support Converting Colors with the new Membership Option!

The pro membership hides all ads, plus gives you double the colors in the color bucket, and more awesome pro features!

**[Learn more, Memberships starting at \\$2.50/m!](#)**

**Follow me  
on Twitter!**

@ConvertingColor