

Converting Colors

Decimal(15768749)

Have a look what the booklet for
Decimal(15768749) contains.

Decimal(15768749)	3
<i>Conversions</i>	4
<i>Details</i>	6
<i>Harmonies</i>	11
<i>Previews</i>	23
<i>Color Blindness Simulation</i>	26
<i>CSS Examples</i>	29

Color

Decimal(15768749)

Conversions

Conversions Part 1

Format	Color
Hex	F09CAD
RGB	240, 156, 173
RGB Percent	94%, 61%, 68%
CMY	0.0588, 0.3882, 0.3216
CMYK	0.00, 0.35, 0.28, 0.06
HSL	348°, 74%, 78%
HSV	348°, 35%, 94%
XYZ	55.3665, 45.3193, 45.3645
YIQ	183.0540, 44.6070, 23.0950

Conversions

Conversions Part 2

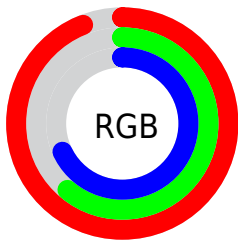
Format	Color
RYB	240, 156, 173
Decimal	15768749
CIELab	73.10, 33.52, 4.25
CIElCh	73, 33.789, 7.221
Yxy	45.3193, 0.3791, 0.3103
Android (android.graphics.Color)	4293958829 (0xFFFF09CAD)
YUV	183.0540, -4.9566, 49.9416
Hunter-Lab	67.3196, 28.9965, 7.1701

Details

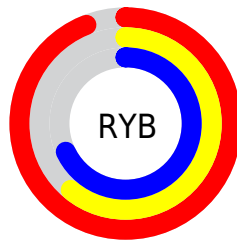
The Decimal color **15768749** is a light color, and the websafe version is hex **FF9999**. A complement of this color would be **10285279**, and the grayscale version is **12040119**.

A 20% lighter version of the original color is **16765924**, and **11954041** is the 20% darker color. If you saturate the color by 10%, you get **15762586**, and if you desaturate by 10%, it is **15774912**.

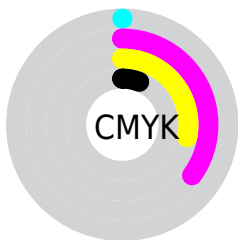
Distribution



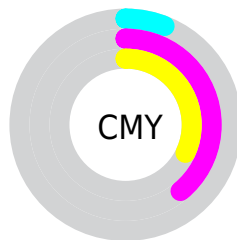
- Red (94%)
- Green (61%)
- Blue (68%)



- Red (94%)
- Yellow (61%)
- Blue (68%)



- Cyan (0%)
- Magenta (35%)
- Yellow (28%)
- Black (6%)



- Cyan (6%)
- Magenta (39%)
- Yellow (32%)

Brightness & Saturation Gradients

These gradients show how the Decimal color 15768749 changes by changing the brightness by 10 percent. The first figure shows a shift by +10% for each color and the second figure -10%.

Similar to the brightness gradients but the following saturation gradients show a change of the Decimal color 15768749 by changing the saturation by 10% instead.

 15768749

 15768749

16777215

 13861266

 16765924

 11954041

 16773375

 10112608

 8336968

 6561074

 4850205

 3342339

 655360

 0

 15768749

 15768749

 15762586

 15774912

 15756423

 15781075

 15750260

 15787238

 15744096

 15793402

 15737933

 15794175

 15731770

 15728689

Harmonies

Analogous

The Analogous color harmony consists of three colors that are next to each other on the color wheel.



14786508



15768749



15638672

Triad

The Triadic color harmony groups three colors that are evenly spaced from another and form a triangle on the color wheel.



15768749



10534273



6733292

Complementary

The Complementary color scheme is a pair of colors which are on the opposite of each other on the color wheel.



15768749



10285279

Split Complementary

Split-complementary colors differ from the complementary color scheme. The scheme consists of three colors, the original color and two neighbors of the complement color.



4899800



15768749



8110747

Square

The Square scheme is like the rectangle color scheme, but the four colors are evenly spaced on the color wheel.



15768749



12694646



5817530



9811184

Rectangle

The Rectangle color scheme consists of four colors that form a rectangle on the color wheel.



15768749



14984832



5817530



5881831

Sweetspot

The Sweet Spot groups the original color and five complimentary colors.



15768749



16770025



14589168



8417138



0



8421504

Same Dimension

The Same Dimension uses a secret algorithm to generate beautiful new colors.



15768749



16749738



15774876



7892078



12058661



3670027

Inverse Universe

The Inverse Universe completely reimagines the original color for something new.



15768749



16749738



10279152



7892078



12058661



3670027

Previews

White Background



This preview shows how the Decimal color 15768749 looks on a white background.

Color Contrast Check

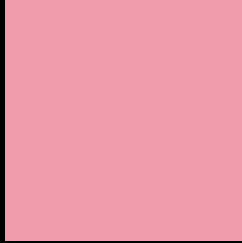
Large Text (above 18pt) WCAG AA × Fail

Any Text WCAG AA × Fail

Large Text (above 18pt) WCAG AAA × Fail

Any Text WCAG AAA × Fail

Black Background



This preview shows how the Decimal color 15768749 looks on a black background.

Color Contrast Check

Large Text (above 18pt) WCAG AA ✓ Pass

Any Text WCAG AA ✓ Pass

Large Text (above 18pt) WCAG AAA ✓ Pass

Any Text WCAG AAA ✓ Pass

If you want to check with other color combinations, try the [Color Contrast Checker](#).

Decimal 15768749 Background



This preview shows how black text looks on a background with the Decimal color 15768749.

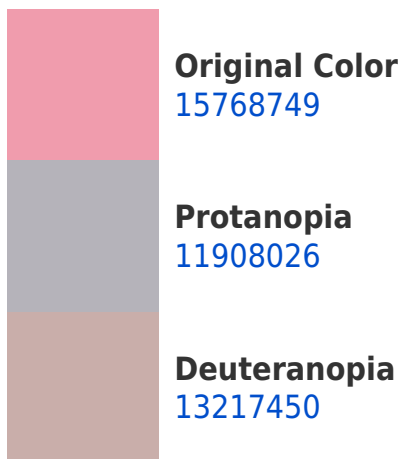


This preview shows how white text looks on a background with the Decimal color 15768749.

Color Blindness Simulation

Color vision deficiency is a very complex topic, and I could not describe the different causes any better than Wikipedia does, so if you want to learn more, you should check out their [article about color blindness](#).

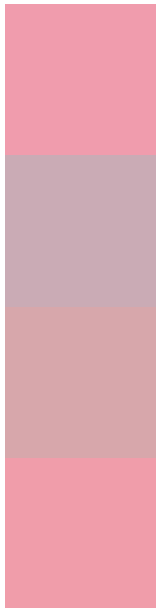
Dichromacy





Tritanopia
15769001

Trichromacy



Original Color
15768749

Protanomaly
13282229

Deuteranomaly
14133163

Tritanomaly
15769002

Monochromacy



Original Color
15768749

Achromatopsia
12040119

Achromatomaly
13413811

CSS Examples

Text

The CSS property to change the color of the text to Decimal 15768749 is called "color". The color property can be set on classes, ids or directly on the HTML element.

This example shows how text in the color #F09CAD looks like.

```
.text, #text, p{  
  color:#F09CAD  
}
```

If you want to add a text shadow in that color use the text-shadow property, you can generate a text shadow directly with our [CSS Text Shadow Generator](#).

Here you see how black text with a 4 pixel #F09CAD colored shadow looks like.

```
.shadow{ text-shadow: 4px 4px 2px #F09CAD
}
```

Border

The CSS property to change the border of an element to Decimal 15768749 is called "border". The border property can be set on classes, ids or directly on the HTML element.

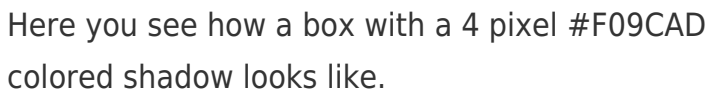
This example shows the color as border, it can be applied via the CSS property "border" or "border-color".

```
.border, #border, table{ border:4px solid
#F09CAD }
```

If only the border color should be changed use the property `border-color`.

```
.border{ border-color:#F09CAD }
```

If you want to add a box shadow in that color use:



Here you see how a box with a 4 pixel #F09CAD colored shadow looks like.

```
.boxshadow{ -moz-box-shadow:4px 4px 4px  
4px #F09CAD; -webkit-box-shadow:4px 4px  
4px 4px #F09CAD; box-shadow:4px 4px 4px  
4px #F09CAD }
```

Background

The CSS property to change the background color of an element to Decimal 15768749 is called "background". The background property can be set on classes, ids or directly on the HTML element.

```
.background, #background, body{  
background:#F09CAD }
```

If only the background color should be changed can be used:

```
.background{ background-color:#F09CAD }
```

This example shows the color as background, it is applied via the CSS property "background".

To optimize and compress your CSS code, you can use our [online CSS compressor and optimizer](#) based on csstidy. If you want to create a linear or radial gradient as background or border, check our [CSS Gradient Generator](#).

Hey! You found this booklet interesting? Support Converting Colors with the new Membership Option!

The pro membership hides all ads, plus gives you double the colors in the color bucket, and more awesome pro features!

[Learn more, Memberships starting at \\$2.50/m!](#)

**Follow me
on Twitter!**

@ConvertingColor