

# Converting Colors

Decimal(15776230)

Have a look what the booklet for  
Decimal(15776230) contains.

<b>Decimal(15776230)</b> .....	3
<i><b>Conversions</b></i> .....	4
<i><b>Details</b></i> .....	6
<i><b>Harmonies</b></i> .....	11
<i><b>Previews</b></i> .....	23
<i><b>Color Blindness Simulation</b></i> .....	26
<i><b>CSS Examples</b></i> .....	29

# **Color**

**Decimal(15776230)**

# Conversions

## Conversions Part 1

Format	Color
Hex	F0B9E6
RGB	240, 185, 230
RGB Percent	94%, 73%, 90%
CMY	0.0588, 0.2745, 0.0980
CMYK	0.00, 0.23, 0.04, 0.06
HSL	311°, 65%, 83%
HSV	311°, 23%, 94%
XYZ	67.5671, 58.9364, 82.6776
YIQ	206.5750, 18.3350, 25.6550

# Conversions

## Conversions Part 2

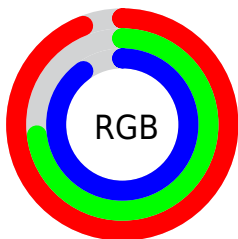
Format	Color
R <sub>Y</sub> B	240, 185, 230
Decimal	15776230
CIE Lab	81.26, 27.03, -14.78
CIE LCh	81, 30.807, 331.334
Yxy	58.9364, 0.3230, 0.2817
Android (android.graphics.Color)	4293966310 (0xFFFF0B9E6)
YUV	206.5750, 11.5485, 29.3137
Hunter-Lab	76.7700, 22.7544, -10.1134

# Details

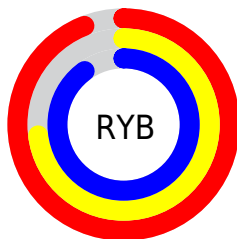
The Decimal color **15776230** is a light color, and the websafe version is hex **FFCCFF**. A complement of this color would be **12185795**, and the grayscale version is **13553358**.

A 20% lighter version of the original color is **16773631**, and **12026798** is the 20% darker color. If you saturate the color by 10%, you get **15770082**, and if you desaturate by 10%, it is **15782378**.

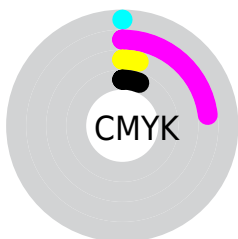
# Distribution



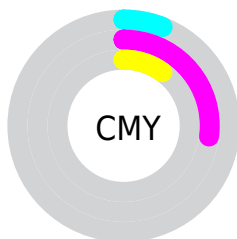
- Red (94%)
- Green (73%)
- Blue (90%)



- Red (94%)
- Yellow (73%)
- Blue (90%)



- Cyan (0%)
- Magenta (23%)
- Yellow (4%)
- Black (6%)



- Cyan (6%)
- Magenta (27%)
- Yellow (10%)

# Brightness & Saturation Gradients

These gradients show how the Decimal color 15776230 changes by changing the brightness by 10 percent. The first figure shows a shift by +10% for each color and the second figure -10%.

Similar to the brightness gradients but the following saturation gradients show a change of the Decimal color 15776230 by changing the saturation by 10% instead.



15776230

15776230

16777215

13868746

16773631

12026798

10250900

8540538

6830433

5186121

3607347

2359326

0

 15776230

 15776230

 15770082

 15782378

 15763933

 15788527

 15757785

 15794163

 15751637

 15794167

 15745488

 15794172

 15739340

 15794175

 15733191

 15728836

# Harmonies

## Analogous

The Analogous color harmony consists of three colors that are next to each other on the color wheel.



13681403



15776230



16758218

# Triad

The Triadic color harmony groups three colors that are evenly spaced from another and form a triangle on the color wheel.



15776230



14534800



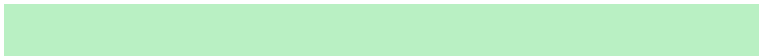
7526887

# Complementary

The Complementary color scheme is a pair of colors which are on the opposite of each other on the color wheel.



15776230



12185795

# Split Complementary

Split-complementary colors differ from the complementary color scheme. The scheme consists of three colors, the original color and two neighbors of the complement color.



8379082



15776230



12505496

# Square

The Square scheme is like the rectangle color scheme, but the four colors are evenly spaced on the color wheel.



15776230



16170904



10344365



8574204

# Rectangle

The Rectangle color scheme consists of four colors that form a rectangle on the color wheel.



15776230



16758454



10344365



7592670



# Sweetspot

The Sweet Spot groups the original color and five complimentary colors.



15776230



16772604



12761584



8418686



0



8421504



# Same Dimension

The Same Dimension uses a secret algorithm to generate beautiful new colors.



15776230



16759026



15776203



7892086



12058774



3670062



# Inverse Universe

The Inverse Universe completely reimagines the original color for something new.



15776230



16759026



12185822



7892086



12058774



3670062



# Previews

## White Background



This preview shows how the Decimal color 15776230 looks on a white background.

## Color Contrast Check

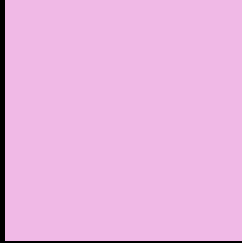
Large Text (above 18pt) WCAG AA × Fail

Any Text WCAG AA × Fail

Large Text (above 18pt) WCAG AAA × Fail

Any Text WCAG AAA × Fail

# Black Background



This preview shows how the Decimal color 15776230 looks on a black background.

## Color Contrast Check

Large Text (above 18pt) WCAG AA ✓ Pass

Any Text WCAG AA ✓ Pass

Large Text (above 18pt) WCAG AAA ✓ Pass

Any Text WCAG AAA ✓ Pass

If you want to check with other color combinations, try the [Color Contrast Checker](#).



## Decimal 15776230 Background



This preview shows how black text looks on a background with the Decimal color 15776230.

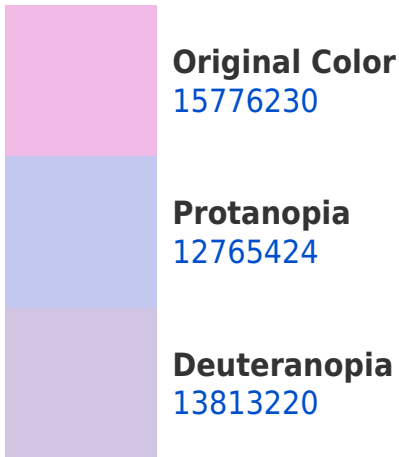


This preview shows how white text looks on a background with the Decimal color 15776230.

# Color Blindness Simulation

Color vision deficiency is a very complex topic, and I could not describe the different causes any better than Wikipedia does, so if you want to learn more, you should check out their [article about color blindness](#).

## Dichromacy



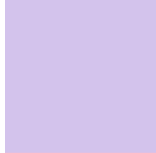


**Tritanopia**  
15580876

# Trichromacy



**Original Color**  
15776230



**Protanomaly**  
13878252



**Deuteranomaly**  
14533093



**Tritanomaly**  
15645909

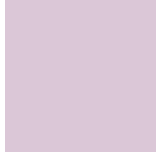
# Monochromacy



**Original Color**  
15776230



**Achromatopsia**  
13619151



**Achromatomaly**  
14403543

# CSS Examples

## Text

The CSS property to change the color of the text to Decimal 15776230 is called "color". The color property can be set on classes, ids or directly on the HTML element.

This example shows how text in the color #F0B9E6 looks like.

```
.text, #text, p{  
    color:#F0B9E6  
}
```

If you want to add a text shadow in that color use the text-shadow property, you can generate a text shadow directly with our [CSS Text Shadow Generator](#).

Here you see how black text with a 4 pixel #F0B9E6 colored shadow looks like.

```
.shadow{ text-shadow: 4px 4px 2px #F0B9E6
}
```

## Border

The CSS property to change the border of an element to Decimal 15776230 is called "border". The border property can be set on classes, ids or directly on the HTML element.

This example shows the color as border, it can be applied via the CSS property "border" or "border-color".

```
.border, #border, table{ border:4px solid
#F0B9E6 }
```

If only the border color should be changed use the property `border-color`.

```
.border{ border-color:#F0B9E6 }
```

If you want to add a box shadow in that color use:

Here you see how a box with a 4 pixel #F0B9E6 colored shadow looks like.

```
.boxshadow{ -moz-box-shadow:4px 4px 4px  
4px #F0B9E6; -webkit-box-shadow:4px 4px  
4px 4px #F0B9E6; box-shadow:4px 4px 4px  
4px #F0B9E6 }
```

# Background

The CSS property to change the background color of an element to Decimal 15776230 is called "background". The background property can be set on classes, ids or directly on the HTML element.

```
.background, #background, body{  
background:#F0B9E6 }
```

If only the background color should be changed can be used:

```
.background{ background-color:#F0B9E6 }
```

This example shows the color as background, it is applied via the CSS property "background".

To optimize and compress your CSS code, you can use our [online CSS compressor and optimizer](#) based on csstidy. If you want to create a linear or radial gradient as background or border, check our [CSS Gradient Generator](#).



Hey! You found this booklet interesting? Support Converting Colors with the new Membership Option!

The pro membership hides all ads, plus gives you double the colors in the color bucket, and more awesome pro features!

**[Learn more, Memberships starting at \\$2.50/m!](#)**

**Follow me  
on Twitter!**

@ConvertingColor